

product: DELPHI PN 13697408
 material: CU-ALLOY
 surface: NI
 material thickness: 0,30 mm
 cross section [mm²]: 0,5 | 0,75

strip length: 4,50 mm
 cable type: FLRY-B
 insulation \varnothing [mm]: 1,40 - 1,90
 seal:

Uncontrolled
Copy
For Information only!

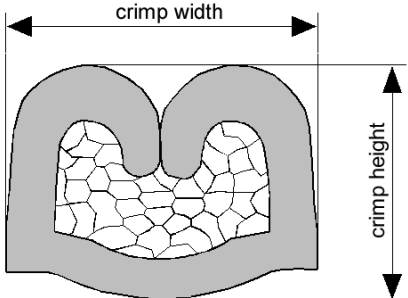
conductor dimension					crimp dimension [mm]					
cable type	cross sect. [mm ²]	struct. n x d [mm]	insul. diam. [mm]	tear-out force [N]	core		insulation			
					height \pm 0,05	width \pm 0,10	height \pm 0,10	width \pm 0,10	height \pm tol.	width \pm tol.
FLRY-B	0,5	16 x 0,21	1,50	80	1,25	1,95	2,10	2,10		
FLRY-B	0,75	24 x 0,21	1,80	120	1,35	1,95	2,20	2,10		

core:
 C-1.85-3.5-12
 DPN 10713713

insulation:
 IS-2.00-4.0-12
 DPN 10739687

anvil:

two piece anvil:
 AC-1.85-3.75
 DPN 10805071
 AI-2.00-4.6-0.6
 DPN 10805810



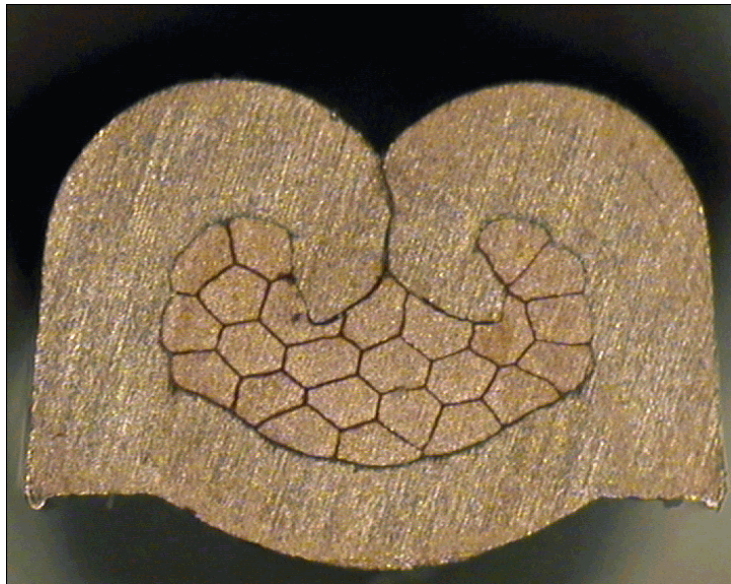
DELPHI PN 13697408



cable:
 $0,50 \text{ mm}^2 = 16 \times 0,21 \text{ mm}$

crimp height:
1,25 mm

crimp width:
1,95 mm



cable:
 $0,75 \text{ mm}^2 = 24 \times 0,21 \text{ mm}$

crimp height:
1,35 mm

crimp width:
1,95 mm