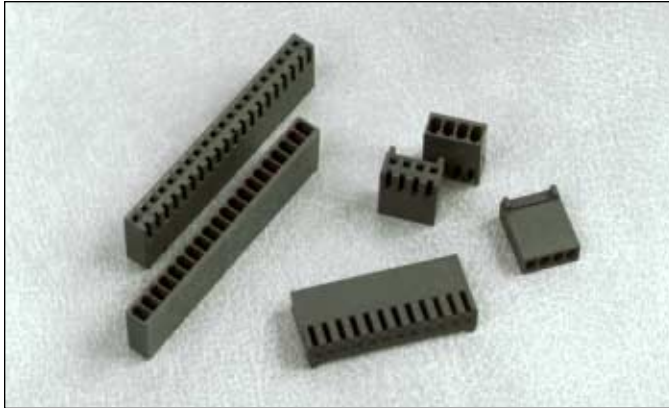


.100" (2.54 mm) Crimp Receptacle



1300 SERIES "TERMACON"

PART NUMBER LEGEND

13X0-XXX

NUMBER OF POSITIONS (SEE TABLE I)

FOR STANDARD CONTACT

0 = W/O LOCKING RAMP & POLARIZING KEY

1 = W/ LOCKING RAMP & POLARIZING KEY

2 = W/ LOCKING RAMP ONLY

FOR ANTI-TANGLE CONTACT

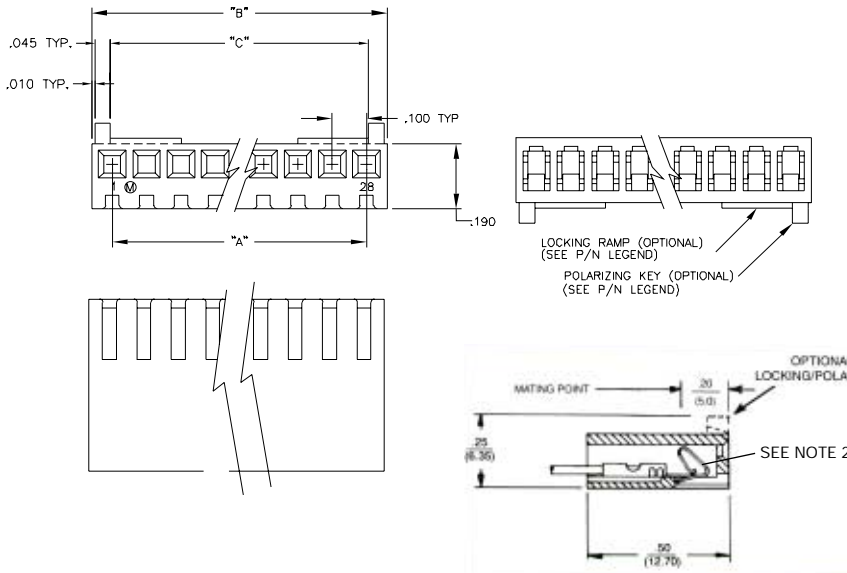
3 = W/O LOCKING RAMP & POLARIZING KEY

4 = W/ LOCKING RAMP & POLARIZING KEY

5 = W/ LOCKING RAMP ONLY

INSULATOR MATERIAL (SEE NOTE 1)

Mates with 1100 Series Headers



NOTE:

- INSULATOR MATERIAL: 1300 - NYLON 6/6, UL 94V-0
COLOR: NATURAL (RED)
1320 - NYLON 6/6, UL 94V-2
COLOR: NATURAL
- THIS HOUSING FOR USE WITH .100 CTR. TERMINAL 1400-XXX (CRIMP TYPE).
- FOR POSITIONS 2 THRU 6, LOCKING RAMP WILL BE SOLID ACROSS.

ADDITIONAL
SPECIFICATIONS

MATING CONTACT

APPLICATION TOOLING

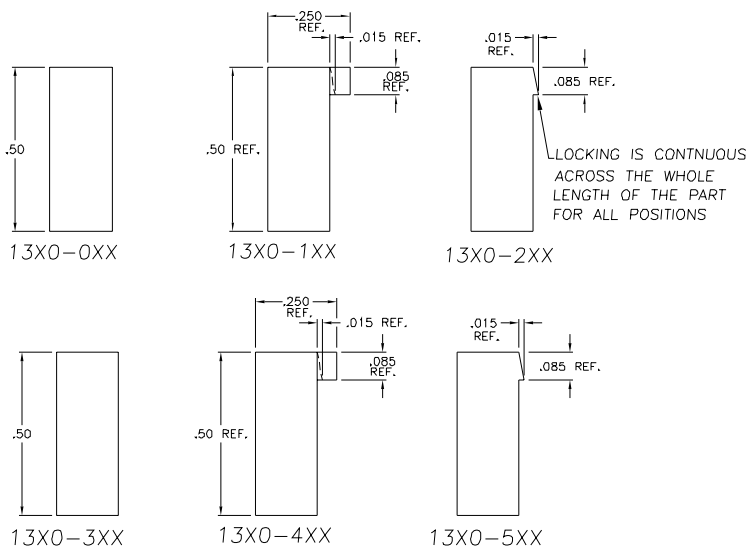


TABLE I

PART No.	No. OF POSITIONS	DIM "A"	DIM "B"	DIM "C"
13X0-X02	2	.100	.220	.110
-X03	3	.200	.320	.210
-X04	4	.300	.420	.310
-X05	5	.400	.520	.410
-X06	6	.500	.620	.510
-X07	7	.600	.720	.610
-X08	8	.700	.820	.710
-X09	9	.800	.920	.810
-X10	10	.900	1.020	.910
-X11	11	1.000	1.120	1.010
-X12	12	1.100	1.220	1.110
-X13	13	1.200	1.320	1.210
-X14	14	1.300	1.420	1.310
-X15	15	1.400	1.520	1.410
-X16	16	1.500	1.620	1.510
-X17	17	1.600	1.720	1.610
-X18	18	1.700	1.820	1.710
-X19	19	1.800	1.920	1.810
-X20	20	1.900	2.020	1.910
-X21	21	2.000	2.120	2.010
-X22	22	2.100	2.220	2.110
-X23	23	2.200	2.320	2.210
-X24	24	2.300	2.420	2.310
-X25	25	2.400	2.520	2.410
-X26	26	2.500	2.620	2.510
-X27	27	2.600	2.720	2.610
13X0-X28	28	2.700	2.820	2.710