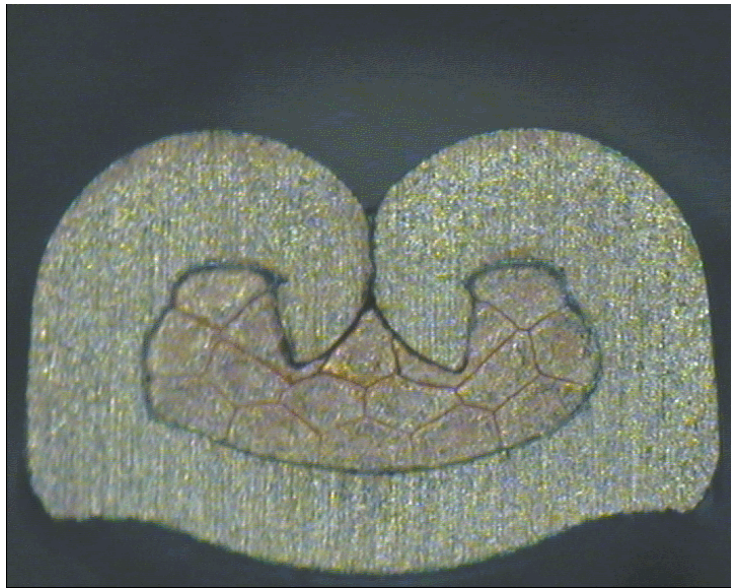


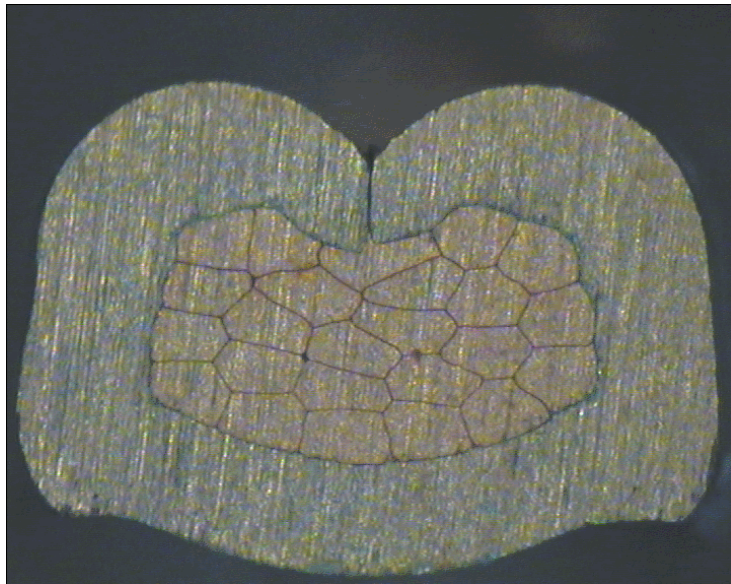
DELPHI PN 13580466



cable:
 $0,50 \text{ mm}^2 = 16 \times 0,21 \text{ mm}$

crimp height:
1,05 mm

crimp width:
1,65 mm



cable:
 $0,75 \text{ mm}^2 = 24 \times 0,21 \text{ mm}$

crimp height:
1,15 mm

crimp width:
1,65 mm