

product: DELPHI PN 13711549  
 material: CU-ALLOY  
 surface: AU  
 material thickness: 0,26 mm  
 cross section [mm<sup>2</sup>]: 0,75 | 1,0

strip length: 4,00 mm  
 cable type: FLRY-B  
 insulation  $\phi$  [mm]: 1,70 - 2,10  
 seal:

**Uncontrolled  
Copy**  
For Information only!

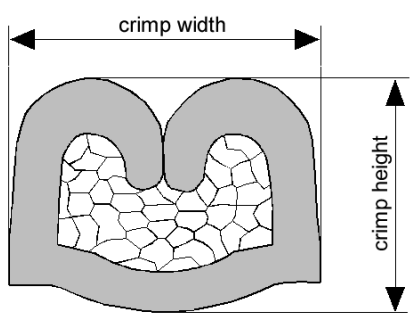
conductor dimension					crimp dimension [mm]					
cable type	cross sect. [mm <sup>2</sup> ]	struct. n x d [mm]	insul. diam. [mm]	tear-out force [N]	core		insulation			
					height $\pm$ 0,05	width $\pm$ 0,10	height $\pm$ 0,10	width $\pm$ 0,10	height $\pm$ tol.	width $\pm$ tol.
FLRY-B	0,75	24 x 0,21	1,80	120	1,25	1,90	2,10	2,15		
FLRY-B	1,0	32 x 0,21	2,00	160	1,35	1,95	2,35	2,20		

core:  
C-1.85-3.0-12  
DPN 10713693

insulation:  
IS-2.00-3.0-12  
DPN 10713819

anvil:

two piece anvil:  
AC-1.85-3.25  
DPN 10764127  
AI-2.00-3.6-0.6  
DPN 10805791



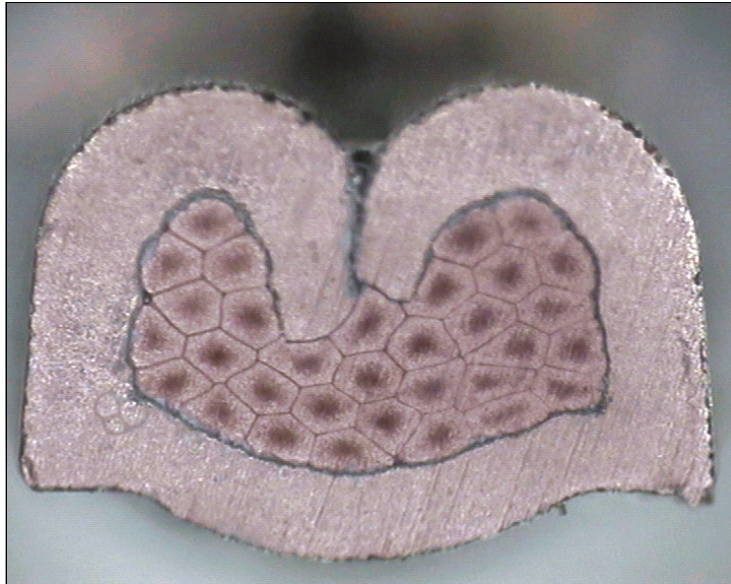
DELPHI PN 13711549



cable:  
 $0,75 \text{ mm}^2 = 24 \times 0,21 \text{ mm}$

crimp height:  
1,25 mm

crimp width:  
1,90 mm



cable:  
 $1,00 \text{ mm}^2 = 32 \times 0,21 \text{ mm}$

crimp height:  
1,35 mm

crimp width:  
1,95 mm