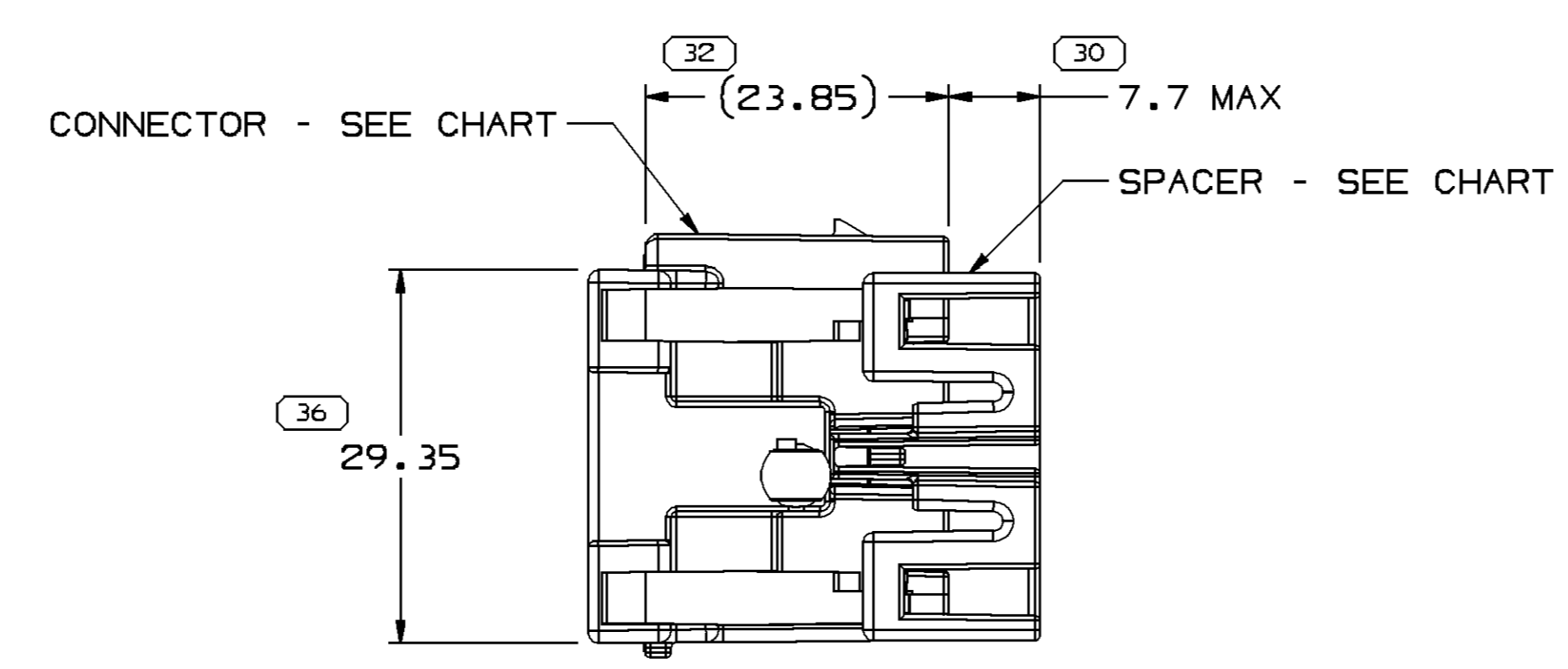
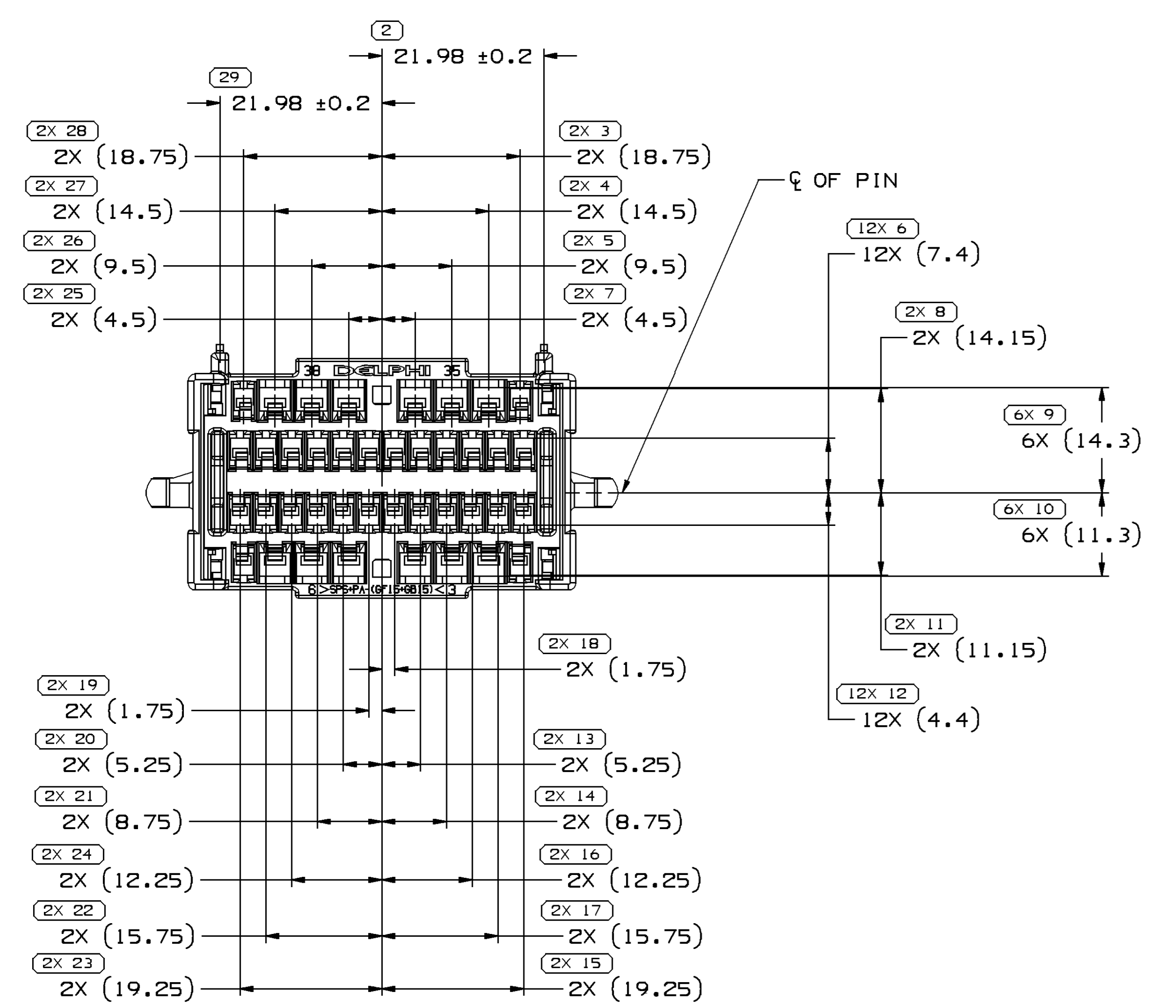
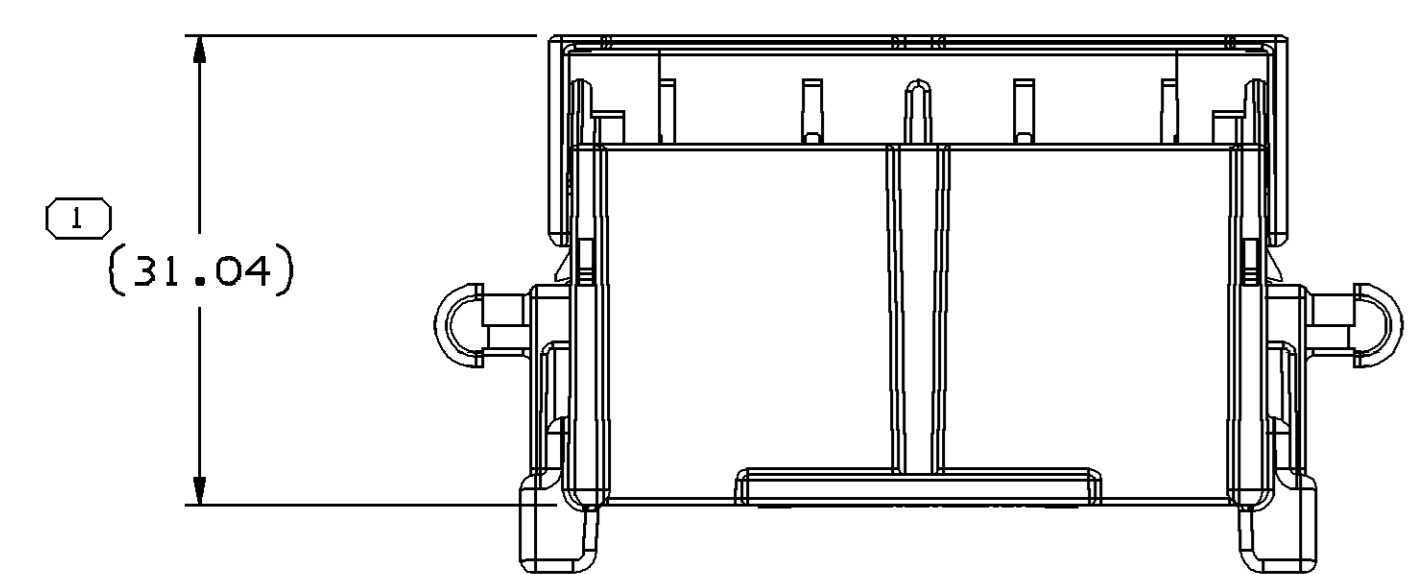
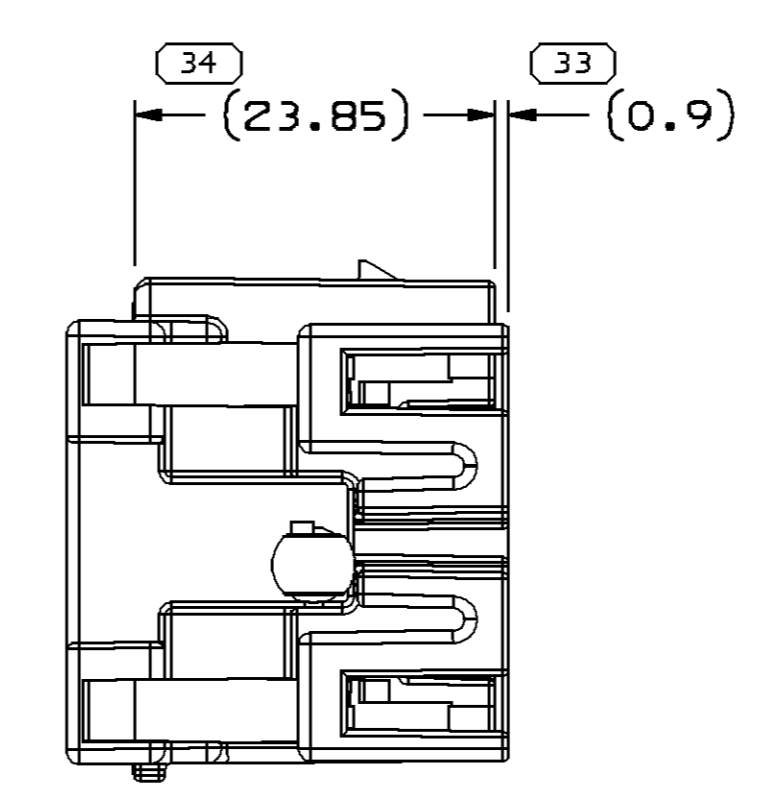


SYMBOL DEFINITION		TOTAL NO OF INSPECTIONS REQUIRED	MISSING SYMBOLS
A DIMENSION WITHOUT AN INSPECTION REPORT SYMBOL () DOES NOT REQUIRE INSPECTION. IT MAY BE CONTROLLED ON THE INDIVIDUAL COMPONENT DRAWING.		89	31
LAST NO. USED		36	

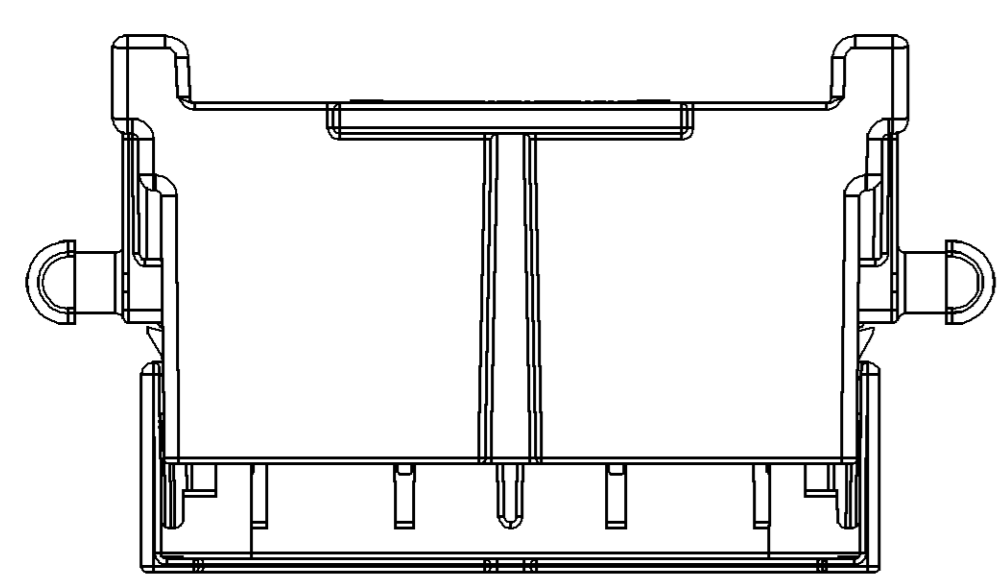
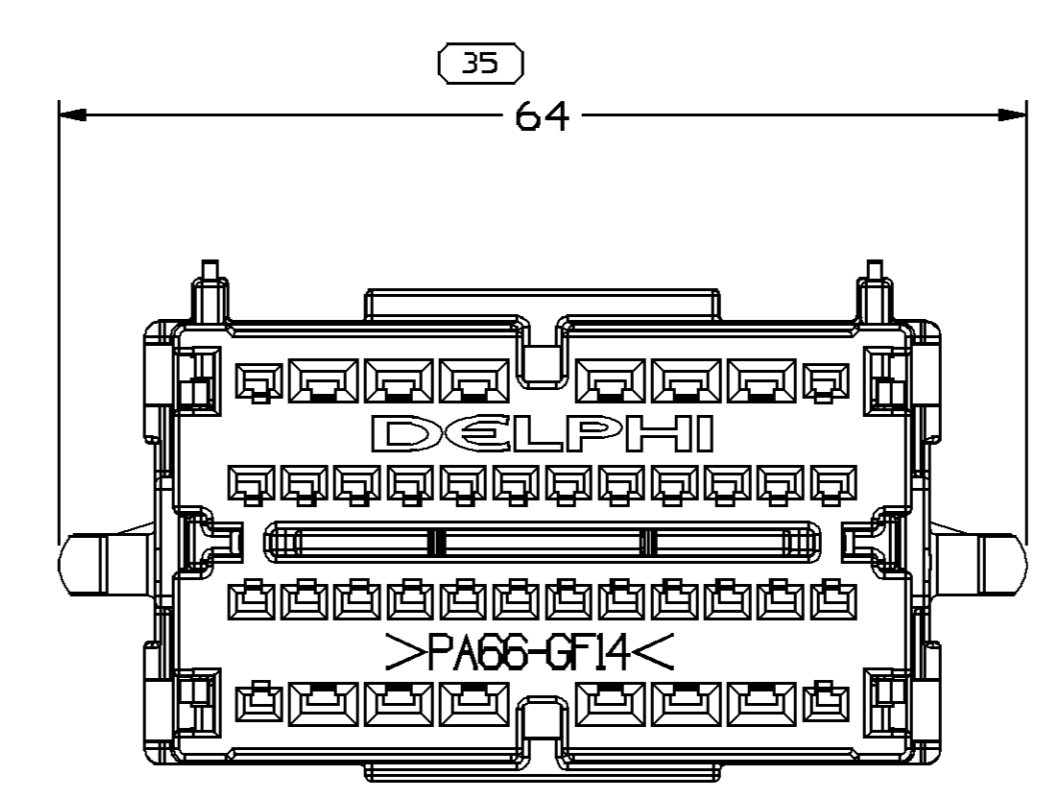
DWG STATUS				REVISION HISTORY		AUTH		APPROV	
DATE	STG	REV	N/P	CHG	ZONE			1	2
18FE05	R	01	-	-		RELEASED	263909	HAM	HAM
18MY05	R	01	AA	-		UPDATED PDM ATTRIBUTES	268308	HAM	HAM
26AUG05	R	01	AB	-		REVISED DIMS 21.98±0.2 WAS (21.98), 21.98±0.2 WAS (21.98), 64 WAS (64) & 7.7 MAX WAS (7.7); REMOVED DIM 31 AND ADDED DIM 36	271559	JBD	AUG
25JUL06	R	01	AC	-		UPDATED PDM ATTRIBUTES	282795	JBD	AUG



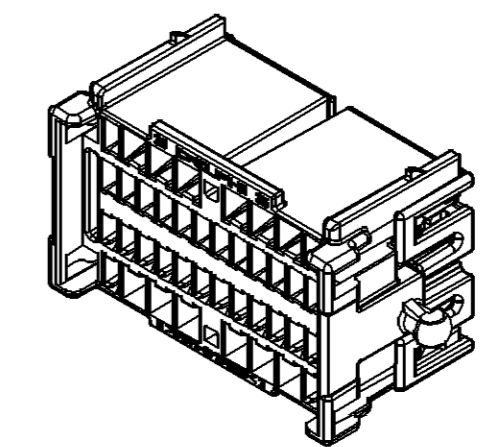
DELIVERY CONDITION TO WIRE ASSEMBLY PLANT
SPACER PRE-STAGED POSITION BEFORE TERMINALS



DELIVERY CONDITION TO VEHICLE PLANT
SPACER FINAL POSITION AFTER TERMINALS



- NOTES
- UNLESS OTHERWISE SPECIFIED AND/OR INDICATED:
DIMENSIONS ARE TO FACE OF VIEW SHOWN AND AUTOMATICALLY ROUNDED BY COMPUTER FOR INSPECTION (SEE MATH MODEL FOR PRECISE DIMENSIONS). FOR ALL OTHER DIMENSIONS NOT SHOWN BUT REQUIRED FOR TOOL BUILD, SEE MATH MODEL FOR PRECISE TOOL PATH DATA.
 - SEALING CODE 0 - UNSEALED
 - THIS PART ACCEPTS THE FOLLOWING COMPONENTS OR EQUIVALENT:
CAVITIES 1, 8, 9-33 & 40 TO ACCEPT 10846793 (YAZAKI P/N 7116-4780-02) TERMINAL OR EQUIVALENT.
MAX INSULATION CRIMP MUST BE LESS THAN 2.9MM HIGH AND 2.9MM WIDE.
MAX CONDUCTOR (CORE) CRIMP SIZE MUST BE LESS THAN 1.7MM HIGH AND 2.55MM WIDE.
CAVITIES 2-7 & 34-39 TO ACCEPT 15421766 (TYCO/AMP P/N 1326030-6) TERMINAL OR EQUIVALENT.
MAX INSULATION CRIMP MUST BE LESS THAN 4MM HIGH AND 4MM WIDE.
MAX CONDUCTOR (CORE) CRIMP SIZE MUST BE LESS THAN 2MM HIGH AND 3.55MM WIDE.
 - REFERENCE MATING COMPONENTS OR EQUIVALENT:
ASSEMBLY 13521075



13521076	13521014	13515387
PART NO	CONNECTOR	SPACER

(N/A) PROCESS SENSITIVE DIMENSION		DIMENSIONS ENCLOSED IN () INDICATE REFERENCE DIMENSIONS AND NO TOLERANCE LIMITS ARE ESTABLISHED	
DIMENSIONAL RANGE (MM)	SHORT ET		
FROM > 0	> 30	> 100	> 150
TO 20	30	70	100
TOLERANCE UNLESS OTHERWISE SPECIFIED			
±0.15	±0.2	±0.3	±0.4
ANGULAR TOLERANCE 2°			

PART DRAWING	
STYLE	
VOLUME 10/1	DISTR CODE
	D
UNLESS OTHERWISE SPECIFIED	
THIS DOCUMENT IS IN ACCORDANCE WITH ASME Y14.5M-1994 AS MODIFIED BY THE IN-SPEC DIMENSIONING AND TOLERANCE ADDENDUM-2001. SEPARATE RATINGS OF FEATURES MAY BE OBTAINED SEPARATELY PER DELPHI 10942001 REFERENCE.	
ALL DIMENSIONS ARE IN MILLIMETERS	
REFERENCE	13515388
THIRD ANGLE PROJECTION	DO NOT SCALE
USE MATH DATA	UNIGRAPHICS

DELPHI
DELPHI PACKARD ELECTRIC SYSTEMS
WARREN, OH

DR	DATE
APV01 HOLLY A. MEEKER	18FE05
APV02 HOLLY A. MEEKER	18FE05
APV03 M.D. MCEOWEN	18FE05
APV04	
APV05	

SUBSTANCES OF CONCERN AND RECYCLED CONTENT PER DELPHI 10942001

WATER TAIL N/A

DRAWING NAME
ASM CONN 40 F RECEPTACLE 1.5 2.8

DRAWING NUMBER
13521076

SIZE A0 SCALE 2:1 FRAME NO 1 OF 1 SHEET NO 1 REV N/P R 01 AC