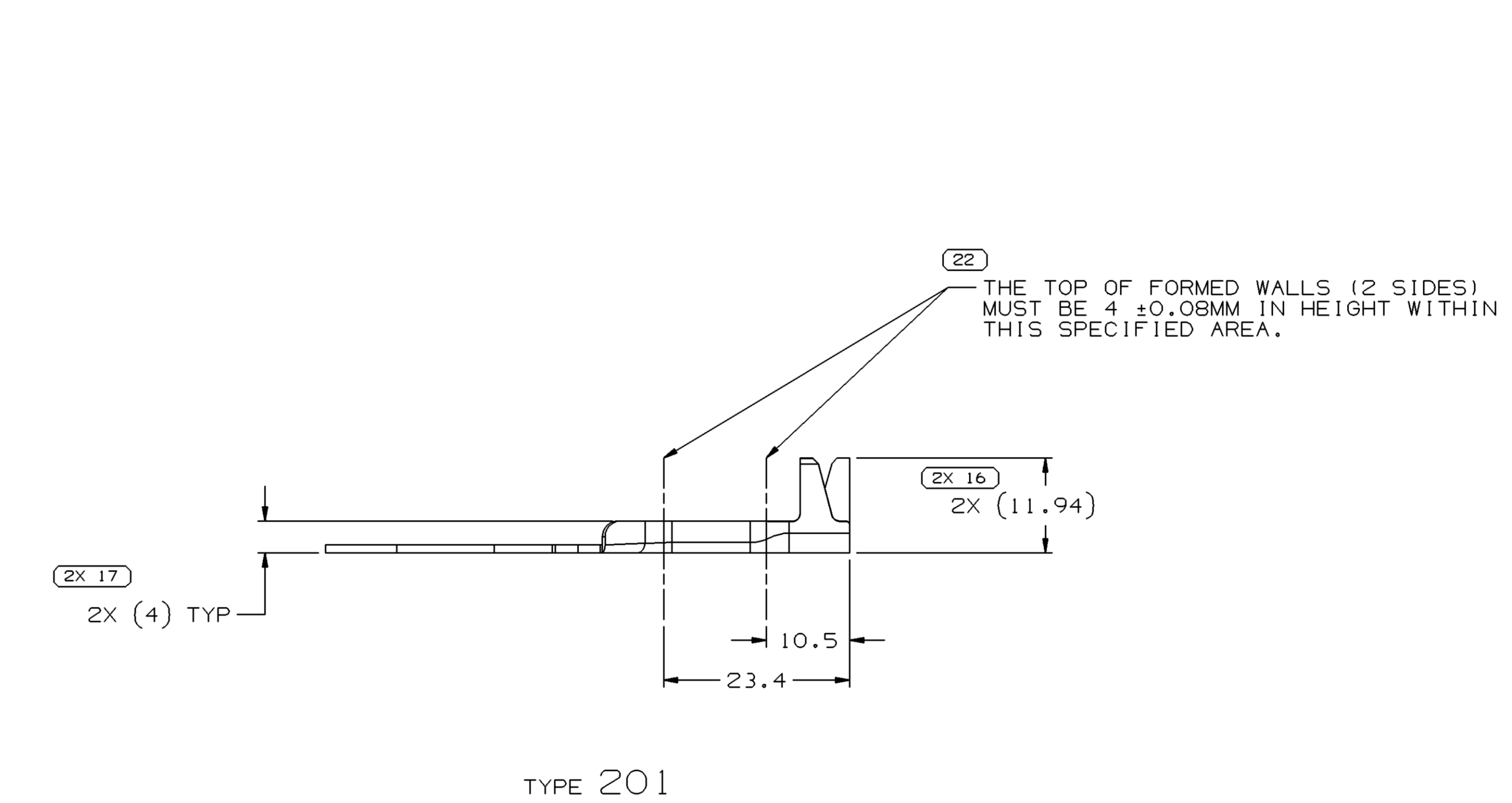
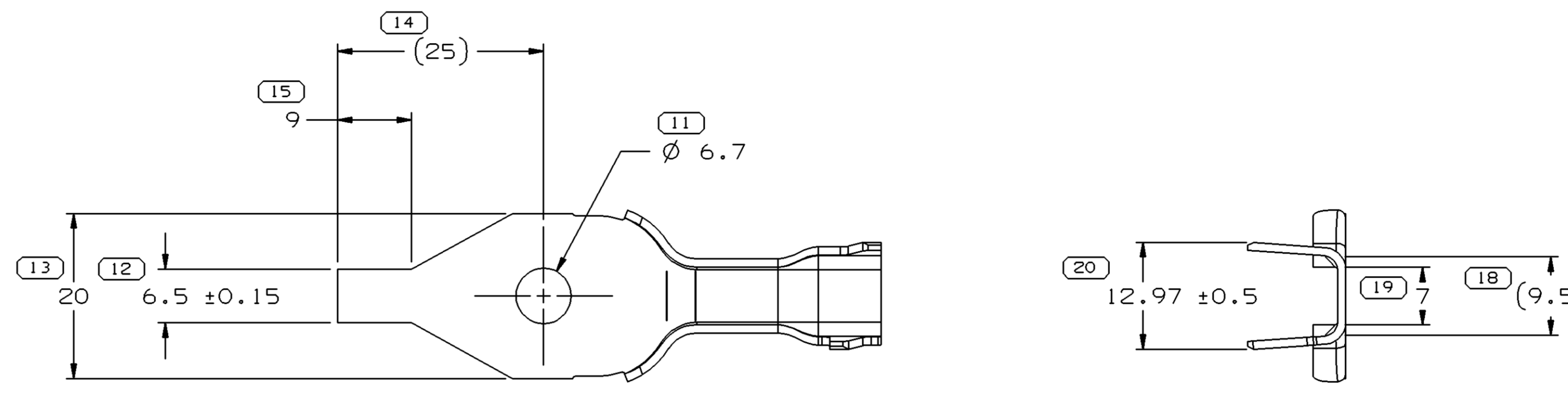
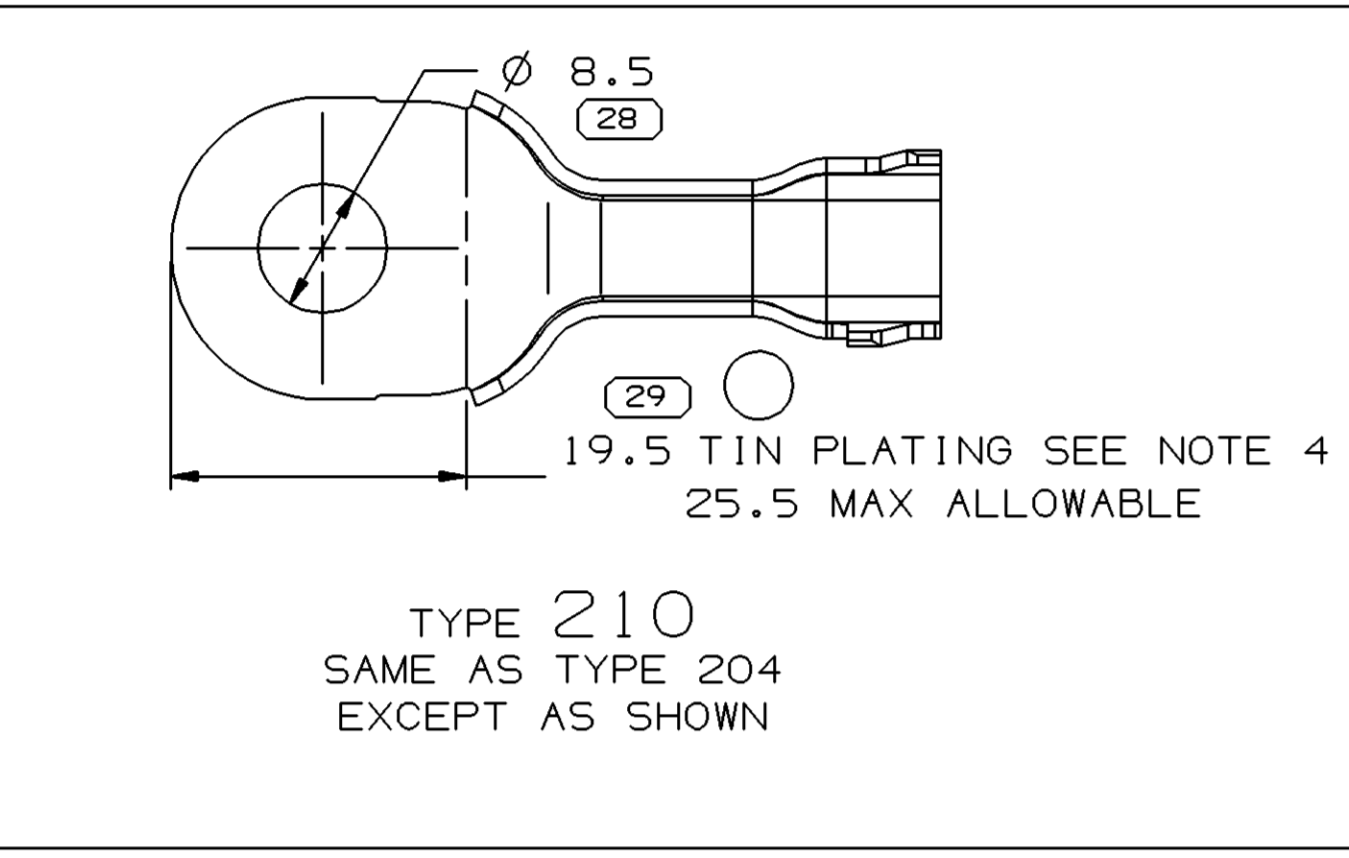
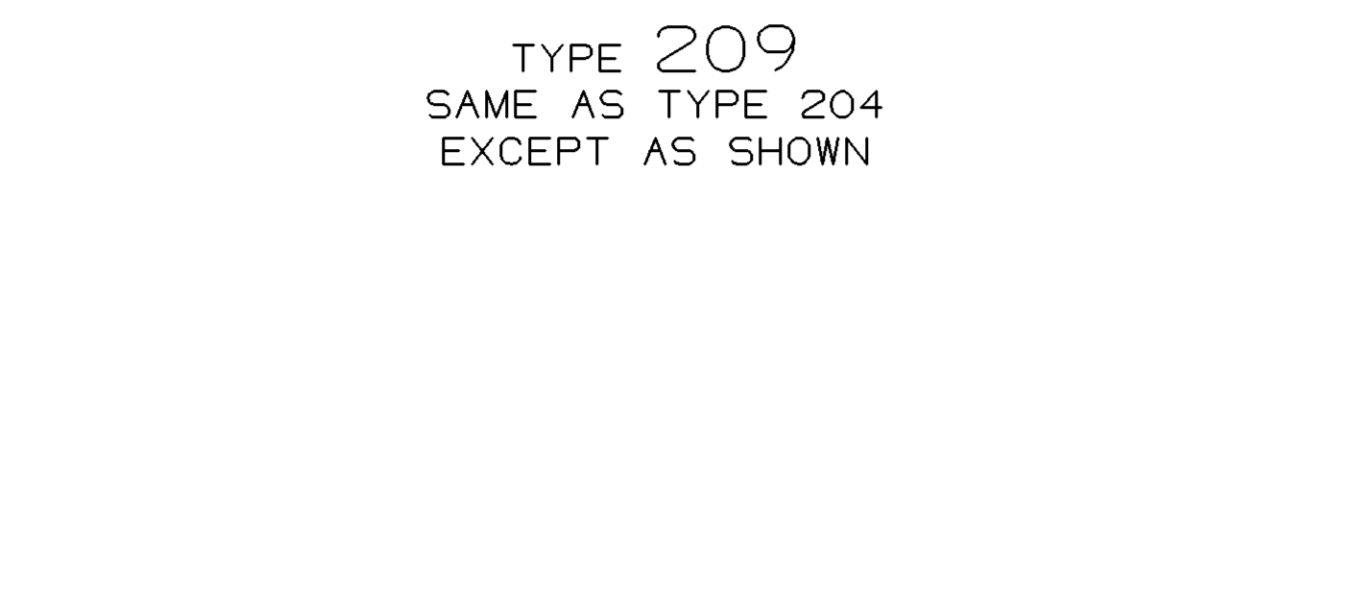
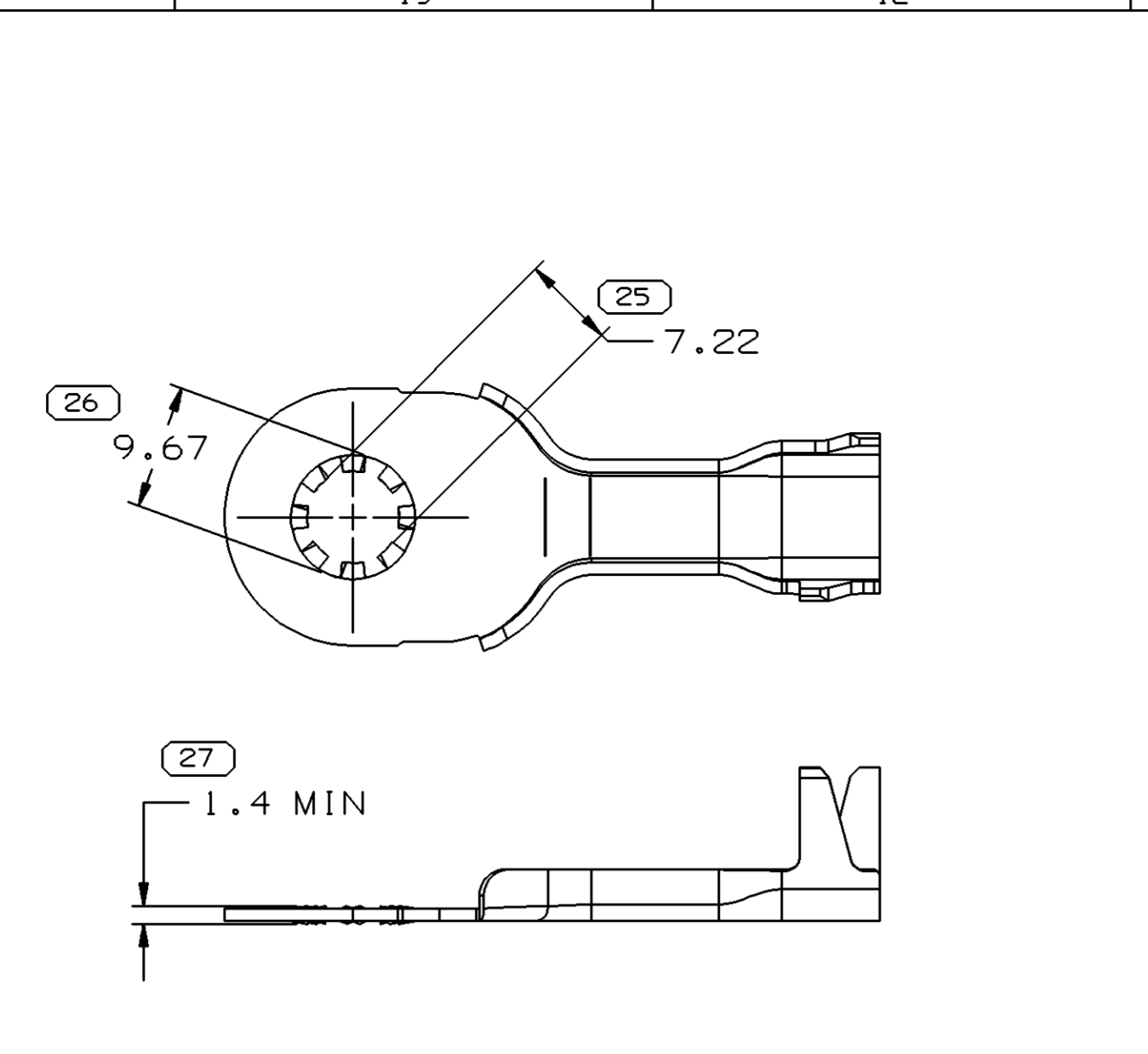
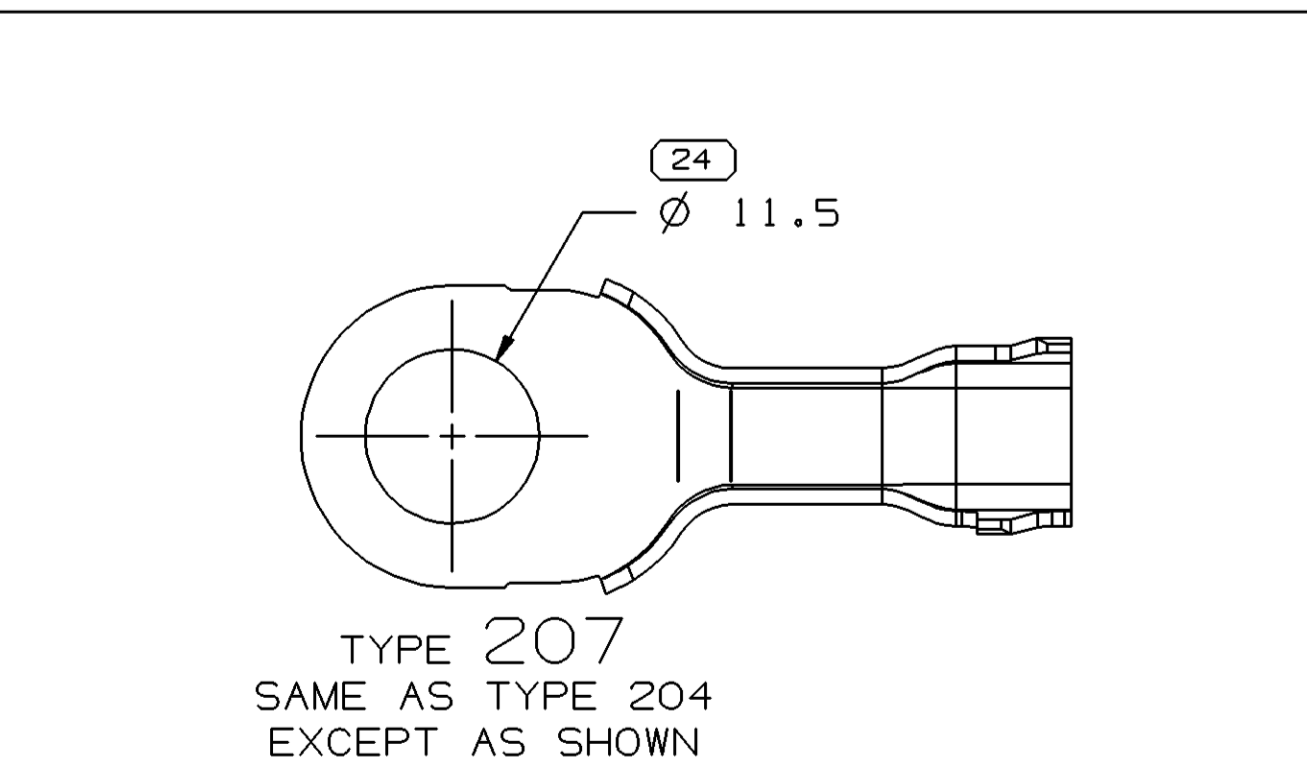
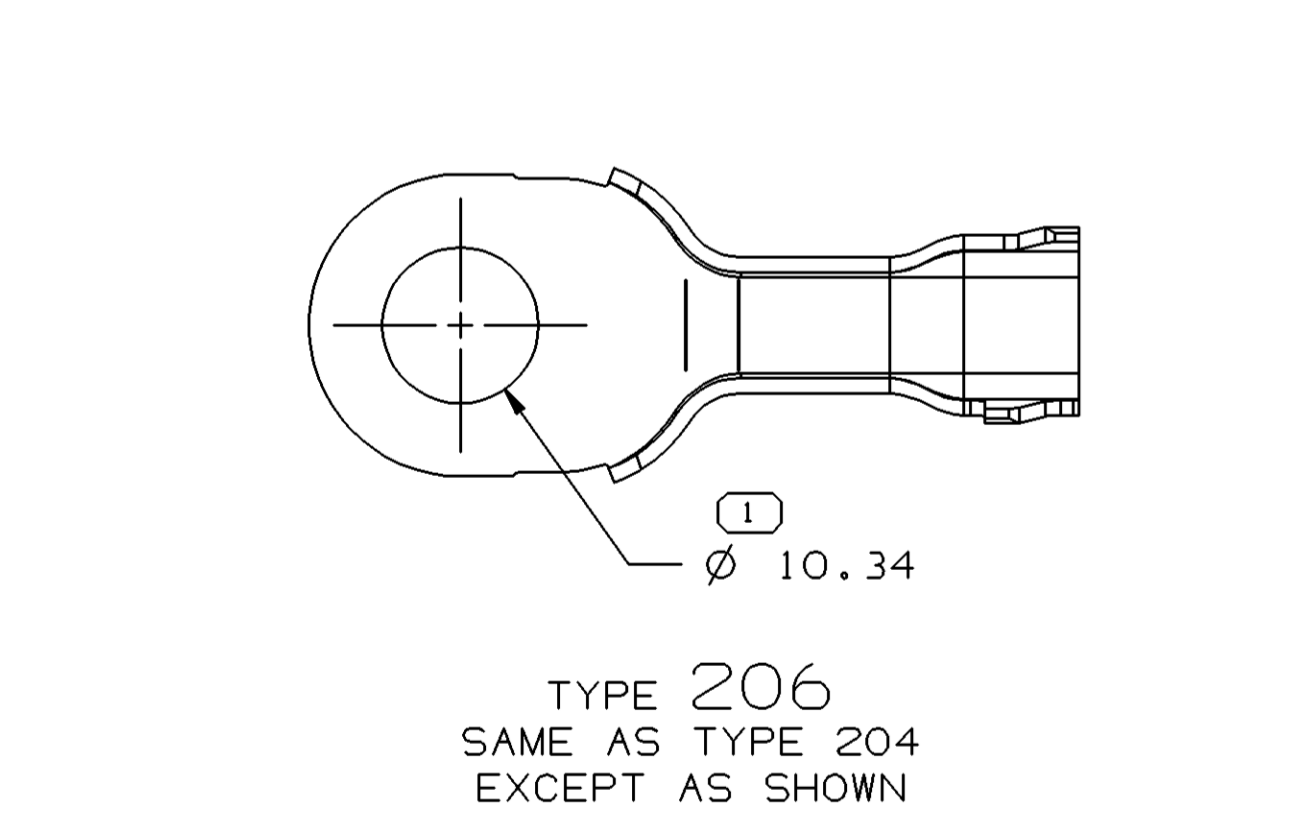
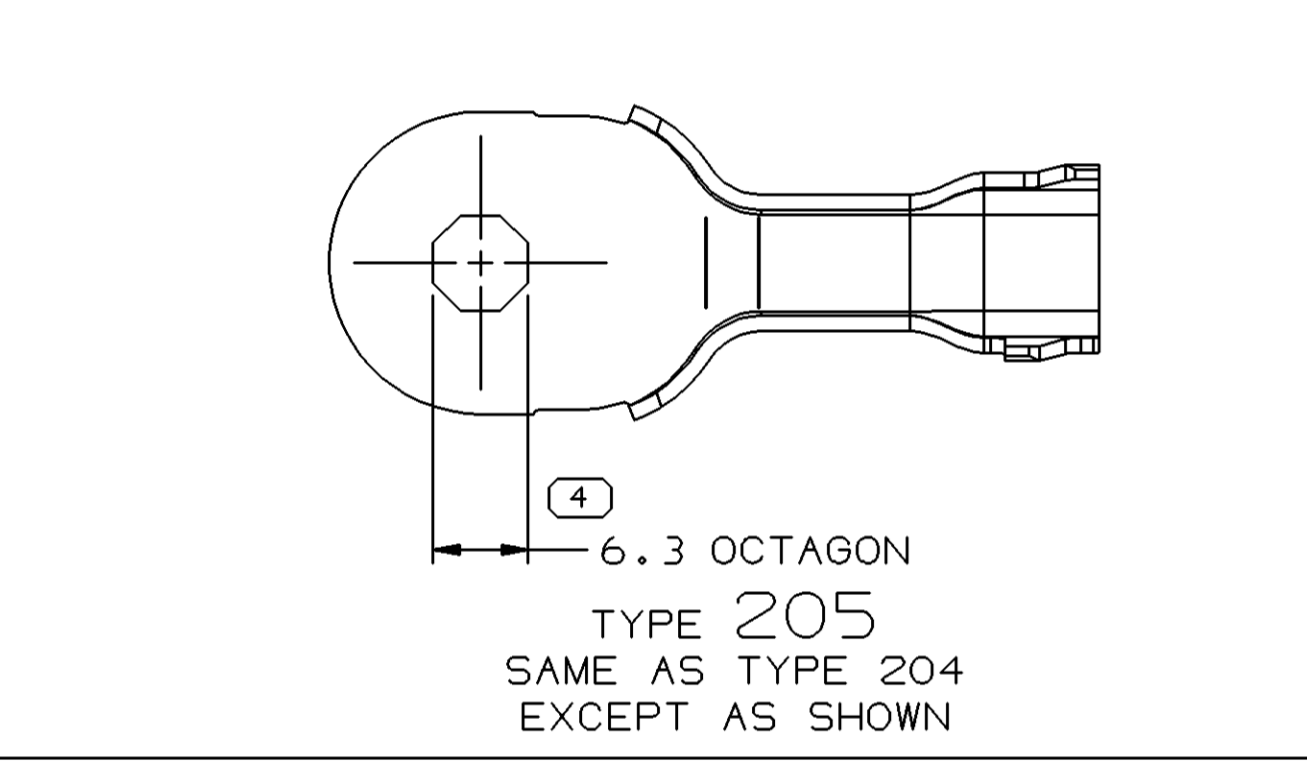
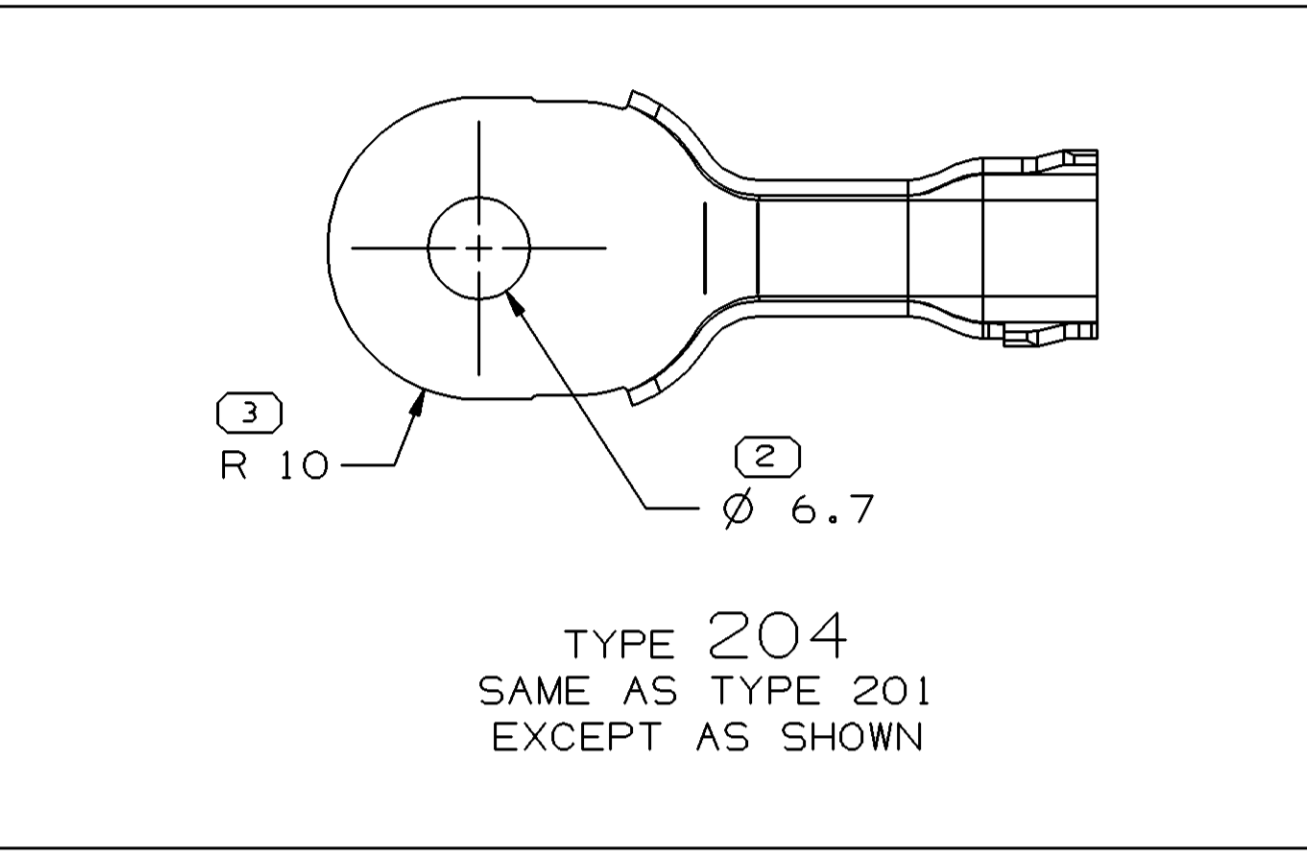
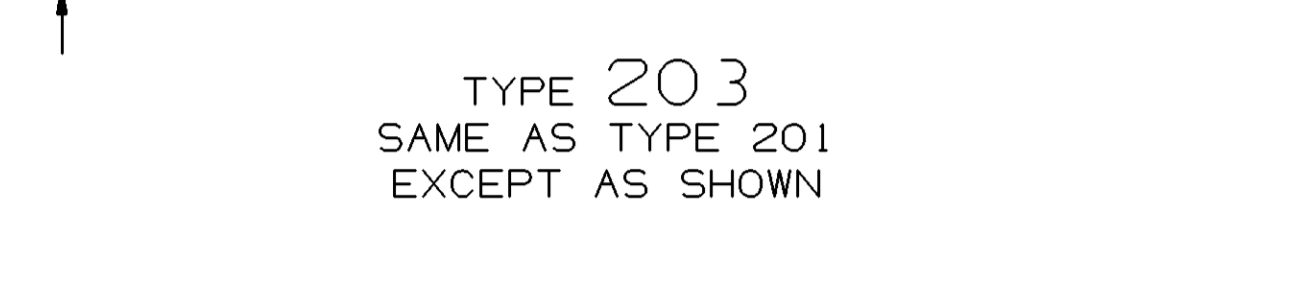
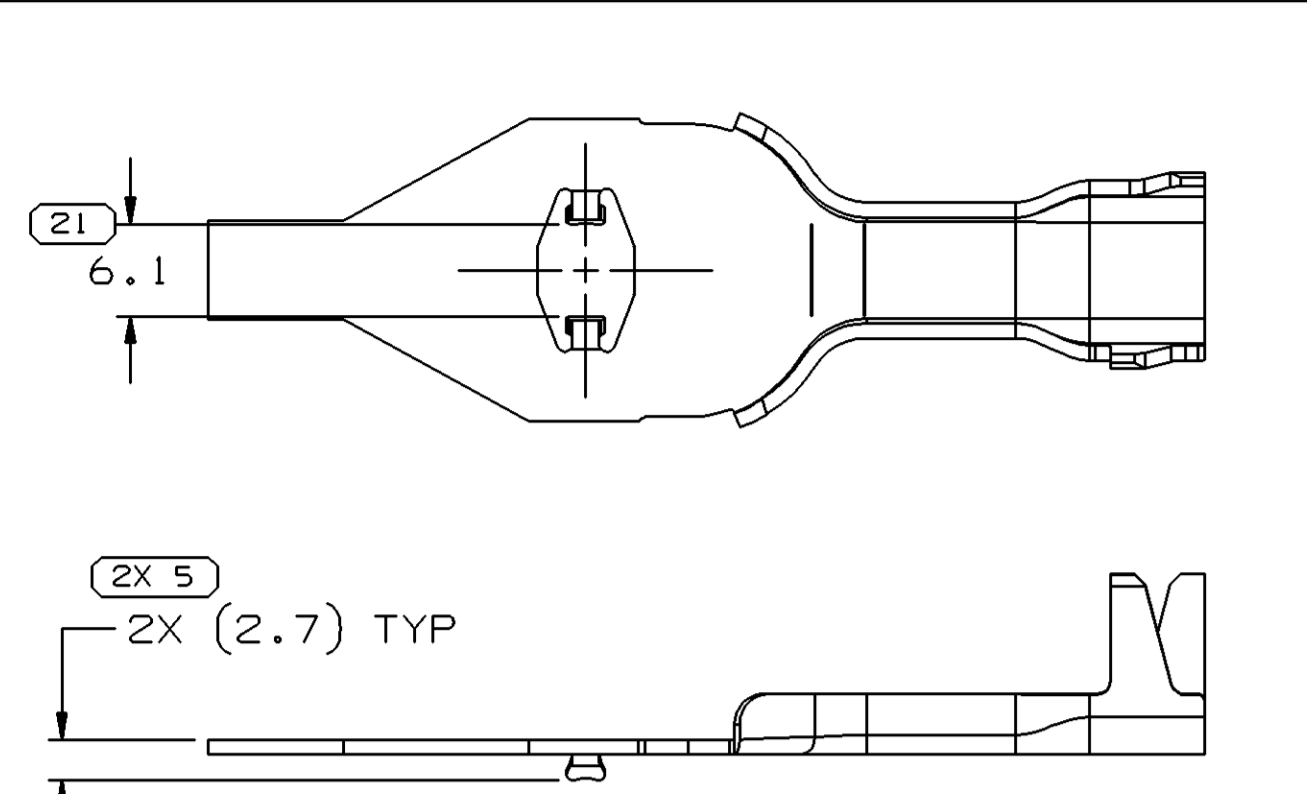
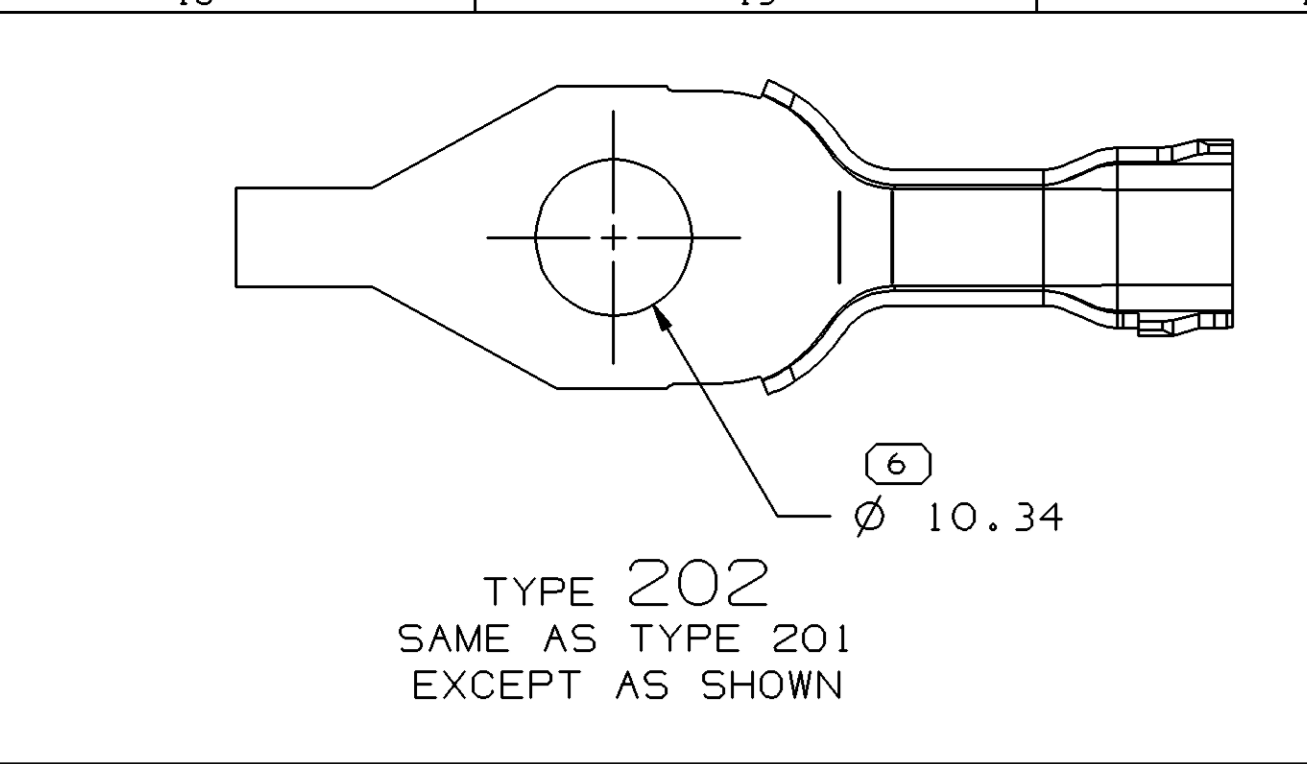


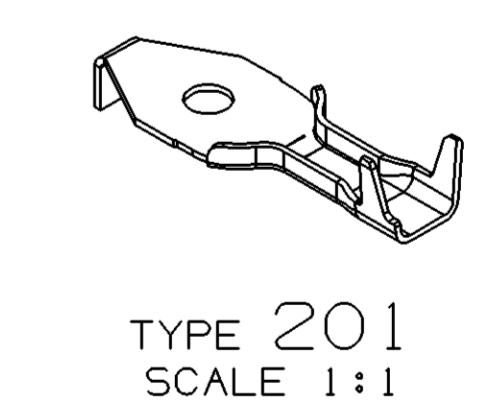
SYMBOL DEFINITION		TOTAL NO OF INSPECTIONS REQUIRED	
A DIMENSION WITHOUT AN INSPECTION REPORT SYMBOL DOES NOT REQUIRE INSPECTION. IT MAY BE CONTROLLED ON THE INDIVIDUAL COMPONENT DRAWING.		32	
	LAST NO. USED	29	

MISSING SYMBOLS		NO MISSING SYMBOL NUMBER	
		32	
		29	

DATE	STG	REV	N/P	CHG	ZONE	REVISION HISTORY	AUTH	DR	APVD
01DE03	R	01	-	-	-	SHEET 2 PART DRAWING CREATED AND RELEASED.	248906	JEB	JEB
13JAO4	R	02	-	-	-	15482715-RELEASED; 15482713-RELEASED; 15485959-RELEASED; 15485961-RELEASED; 15485963-RELEASED; ALL PARTS-REVISED NOTE 2; ALL PARTS-DIM 9 WAS 16 ±0.3, DIM 125) WAS 25 ±0.15	250340	ADK	END
16MR04	R	03	-	-	-	ALL PARTS - ADDED NOTE & DIMS 3 PLCS; 2X (4) TYP WAS 2X 4 TYP & 2X (2.7) TYP WAS 2X 2.1 TYP; REV'D NOTE #2; MATL SPEC WAS M5302XXX - C102	252912	MAC	MAC
07AP04	R	04	-	-	-	ALL PARTS - (19.5) WAS 9.5	253575	EES	EES
26MY04	R	05	-	-	-	ALL PARTS - ADDED "NO. OF WIRES" COLUMN TO CHART & ADDED BUNDLE SIZES 15485963, 15485961, 15485959 - REVISED MATERIAL SPEC	255191	EES	EES
29JNO4	R	06	-	-	-	15476582, 15482713, 15482715- 17 WAS 12; 7.7 ±0.3 WAS 12.7 ±0.3	256415	ADK	ADK
22JL04	R	07	-	-	-	15496902-RELEASED; 15496903-RELEASED; 15498973-RELEASED	257060	CJP	CJP
16SE05	R	08	-	-	-	13532333 ADDED AND RELEASED	272542	MM	MM
21OC05	R	09	-	-	-	19.4 TIN PLATING SEE NOTE 4 25.5 MAX ALLOWABLE WAS 19.5 TIN PLATING	273949	MM	MM



- NOTES
- UNLESS OTHERWISE SPECIFIED AND/OR INDICATED: DIMENSIONS ARE TO FACE OF VIEW SHOWN AND AUTOMATICALLY ROUNDED BY COMPUTER FOR INSPECTION (SEE MATH MODEL FOR PRECISE DIMENSIONS). FOR ALL OTHER DIMENSIONS NOT SHOWN BUT REQUIRED FOR TOOL BUILD, SEE MATH MODEL FOR PRECISE TOOL PATH DATA.
 - TERMINAL MUST BE MADE USING FIN-LUBE 0177 STAMPING LUBE OIL. ANY OTHER LUBRICANT MUST BE APPROVED BY PRODUCT ENGINEERING.
 - TERMINALS ARE TO BE SINGULATED FROM CARRIER AND PLACED IN CLEAN PLASTIC BAGS PRIOR TO STORAGE AND SHIPMENT.
 - PRE-PLATED SELECTIVE MATTE TIN (99.9%) AS DIMENSIONED.



TYPE 201
SCALE 1:1

PART NO	REV	N/P	STATUS	MATERIAL SPECIFICATION	TYPE	ANTI-ROTATION	BUNDLE SIZE MM ²	NO. OF WIRES (MIN-MAX)
13532333	01	AA	-	M5621LN3 - C102	210	NO	6.5-13.5	1-12
15496902	01	-	-	M5302B85 - C102	209	NO	6.5-13.5	1-12
15496903	01	-	-	M5302B85 - C102	208	NO	6.5-13.5	1-12
15498973	01	-	-	M5302B85 - C102	207	NO	6.5-13.5	1-12
15485963	01	AD	-	M5302B85 - C102	206	NO	6.5-13.5	1-12
15485961	01	AD	-	M5302B85 - C102	205	YES	6.5-13.5	1-12
15485959	01	AD	-	M5302B85 - C102	204	NO	6.5-13.5	1-12
15476582	02	-	-	M5302B91 - C102	203	YES	6.5-13.5	1-12
15482713	02	-	-	M5302B91 - C102	202	YES	6.5-13.5	1-12
15482715	02	-	-	M5302B91 - C102	201	YES	6.5-13.5	1-12

DWO TYPE		PART DRAWING	
STYLE		DISTR CODE	D
VOLUME (COP)			
UNLESS OTHERWISE SPECIFIED			
THIS DOCUMENT IS IN ACCORDANCE WITH ASME Y14.5M-1994 AS AMENDED BY THE 2003 DIMENSIONING AND TOLERANCING ADDENDUM - 1997. ALL DIMENSIONS ARE TO FACE UNLESS OTHERWISE SPECIFIED. DIMENSIONS ARE IN MILLIMETERS UNLESS OTHERWISE SPECIFIED. DIMENSIONS ARE TO FACE UNLESS OTHERWISE SPECIFIED. DIMENSIONS ARE TO FACE UNLESS OTHERWISE SPECIFIED. DIMENSIONS ARE TO FACE UNLESS OTHERWISE SPECIFIED.			
THIRD ANGLE PROJECTION	DO NOT SCALE	USE MATH DATA	UNLESS OTHERWISE SPECIFIED

DELPHI
DELPHI PACKARD ELECTRIC SYSTEMS
WARREN, OH

DR	DATE
APVD1 J. BANKSTON	01DE03
APVD2 J. BANKSTON	01DE03
APVD3 R. PUHL	02DE03
APVD4	
APVD5	

MATERIAL SEC CHART

UNLESS OTHERWISE SPECIFIED

SUBSTANCES OF CONCERN AND RECYCLED CONTENT PER DELPHI 10949001

DRAWING NAME: TAXI TERM RING

DRAWING NUMBER: 15485965

SIZE: A0 SCALE: 2:1 FRAME NO: 1 SHEET NO: 2 OF 2 DATE: 09