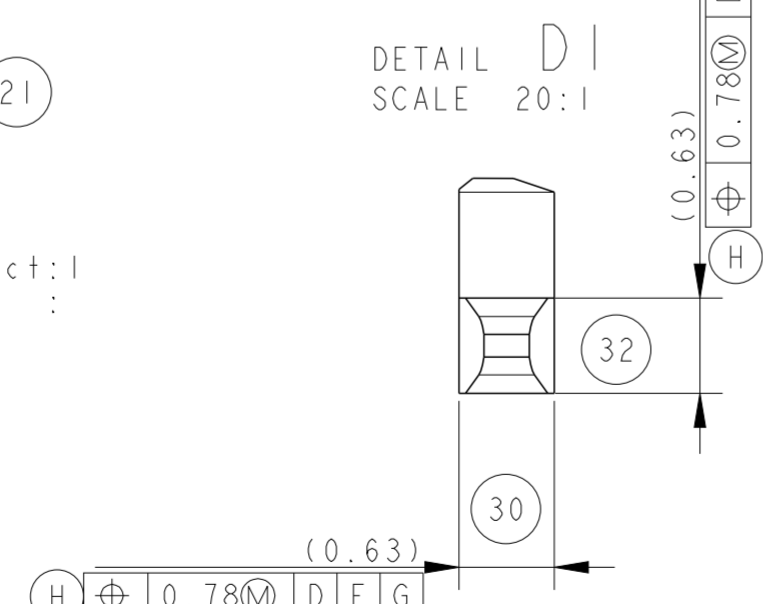
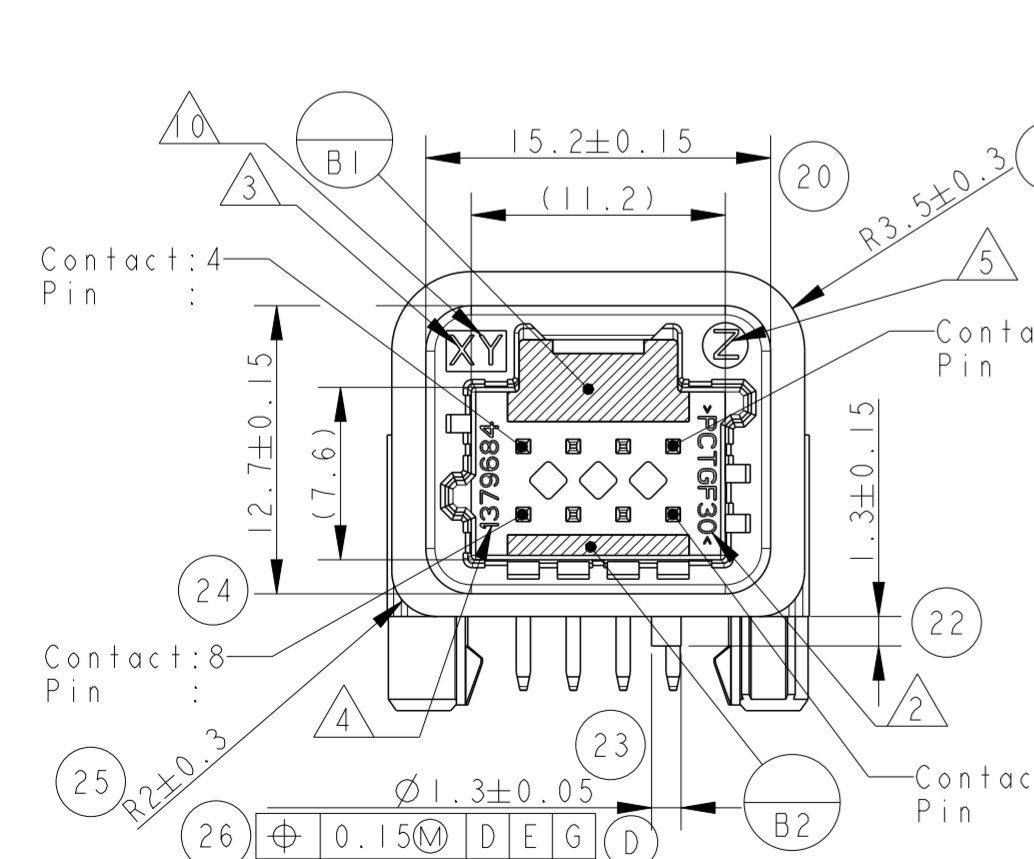
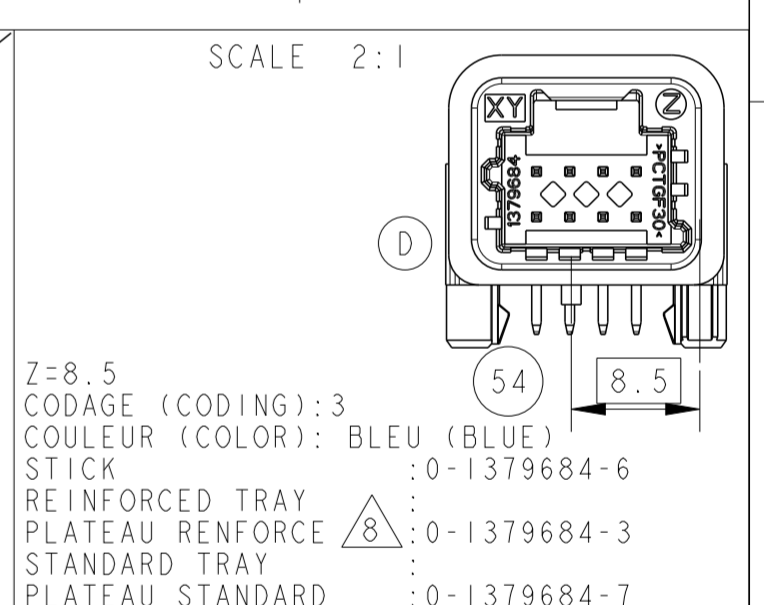
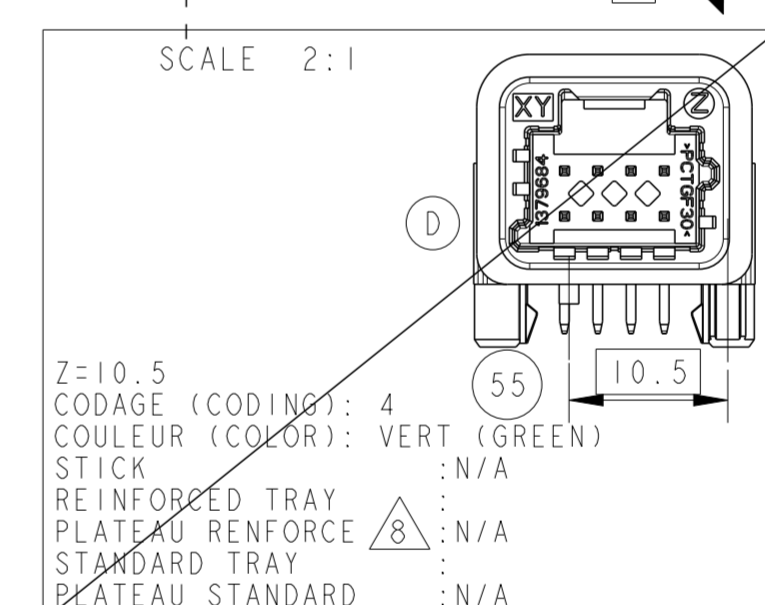
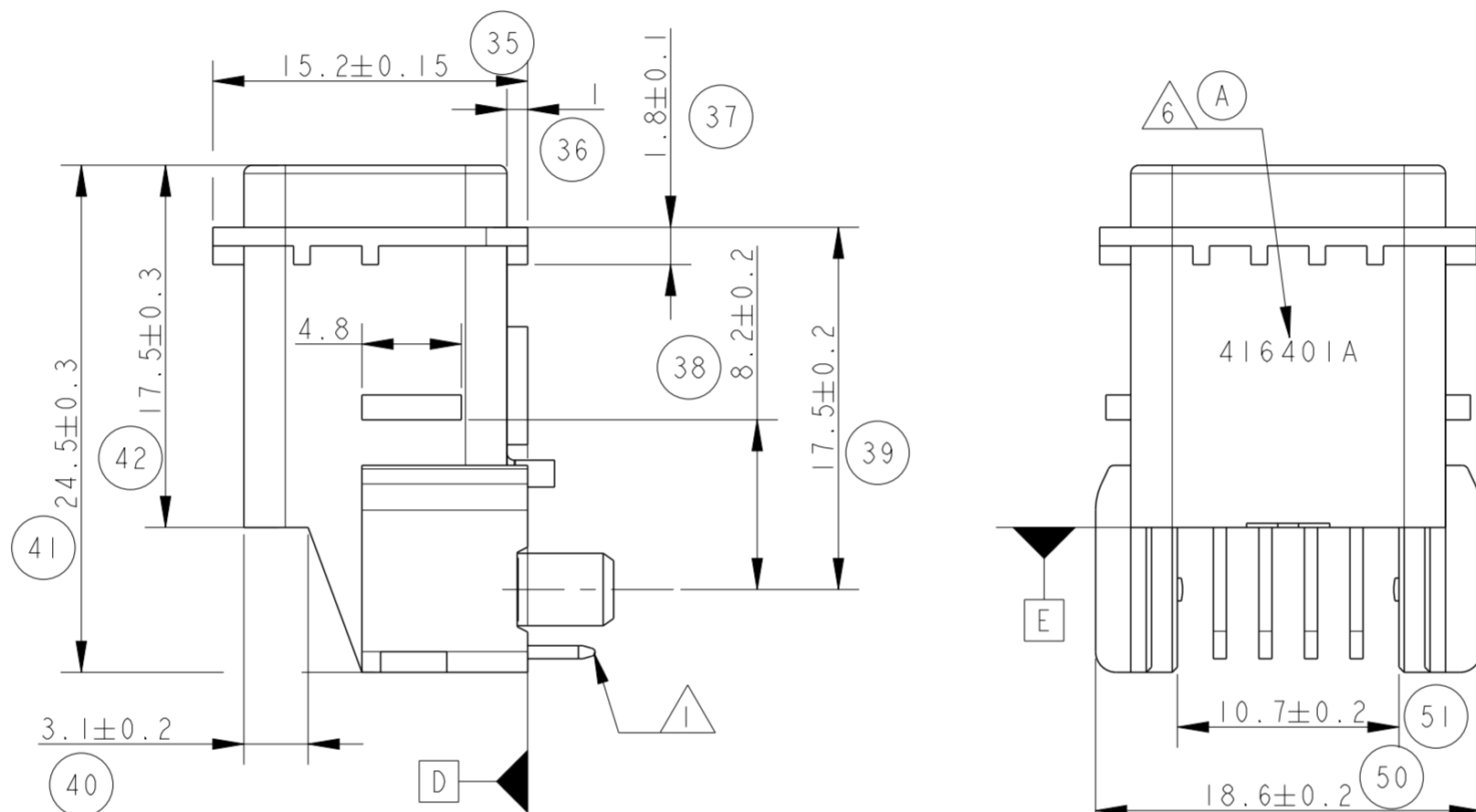
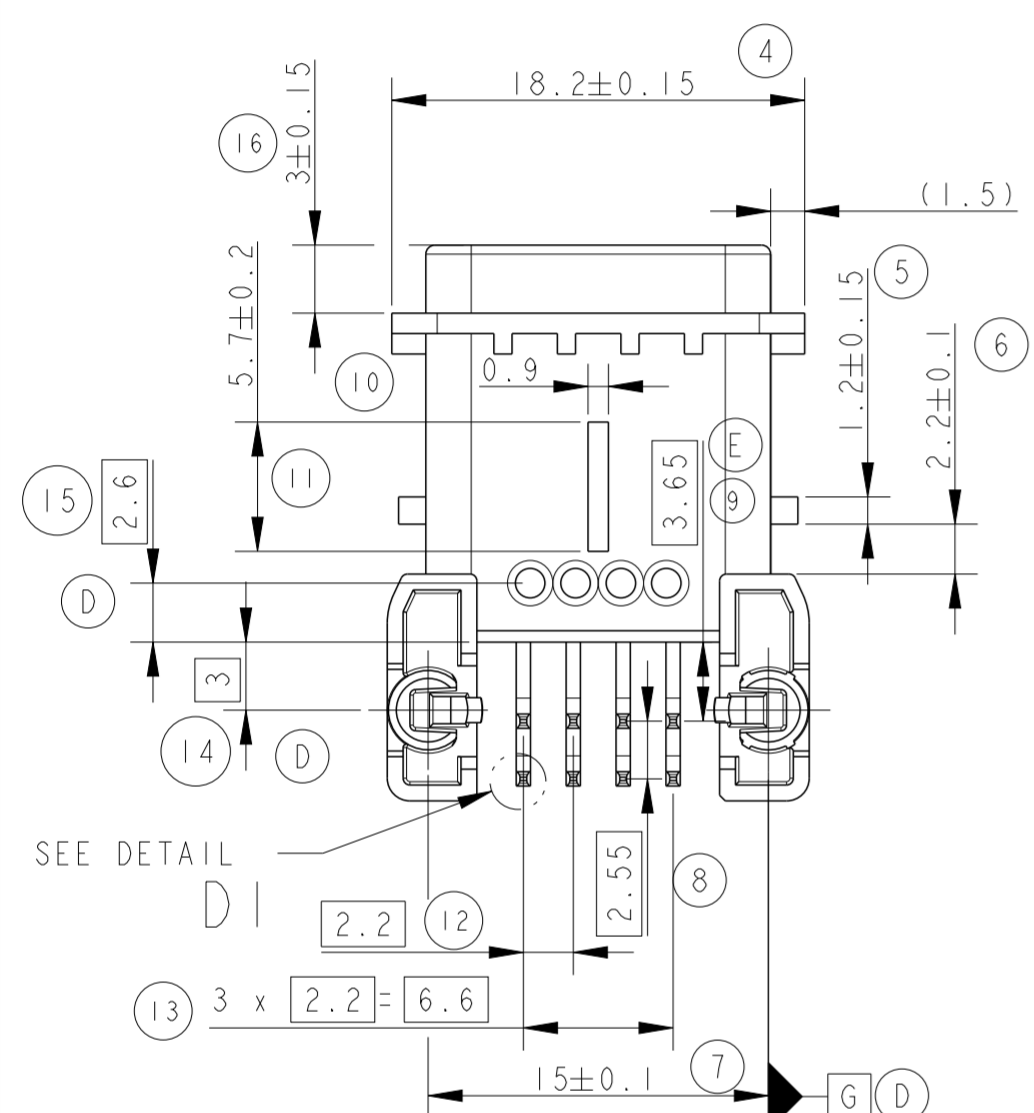
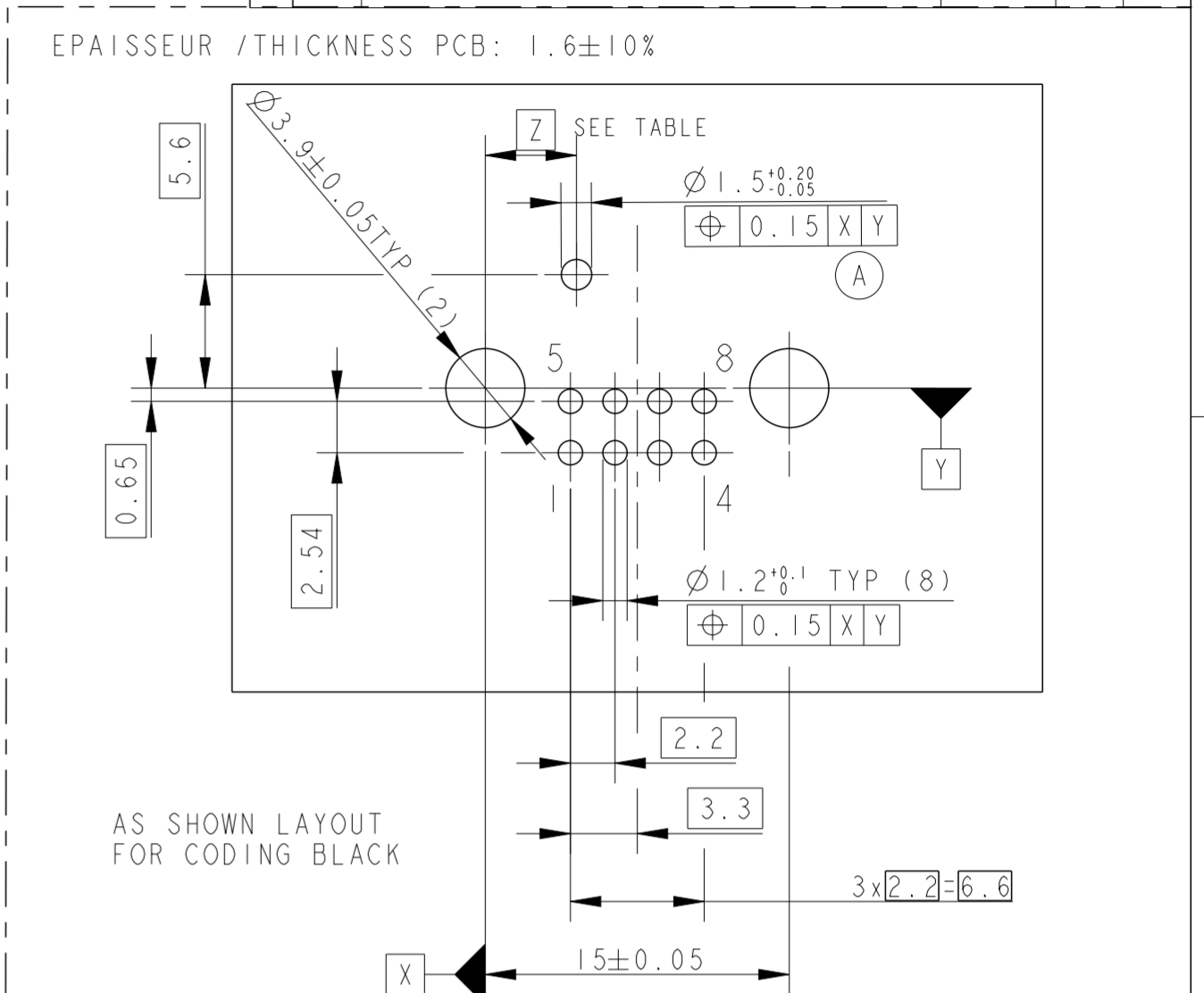
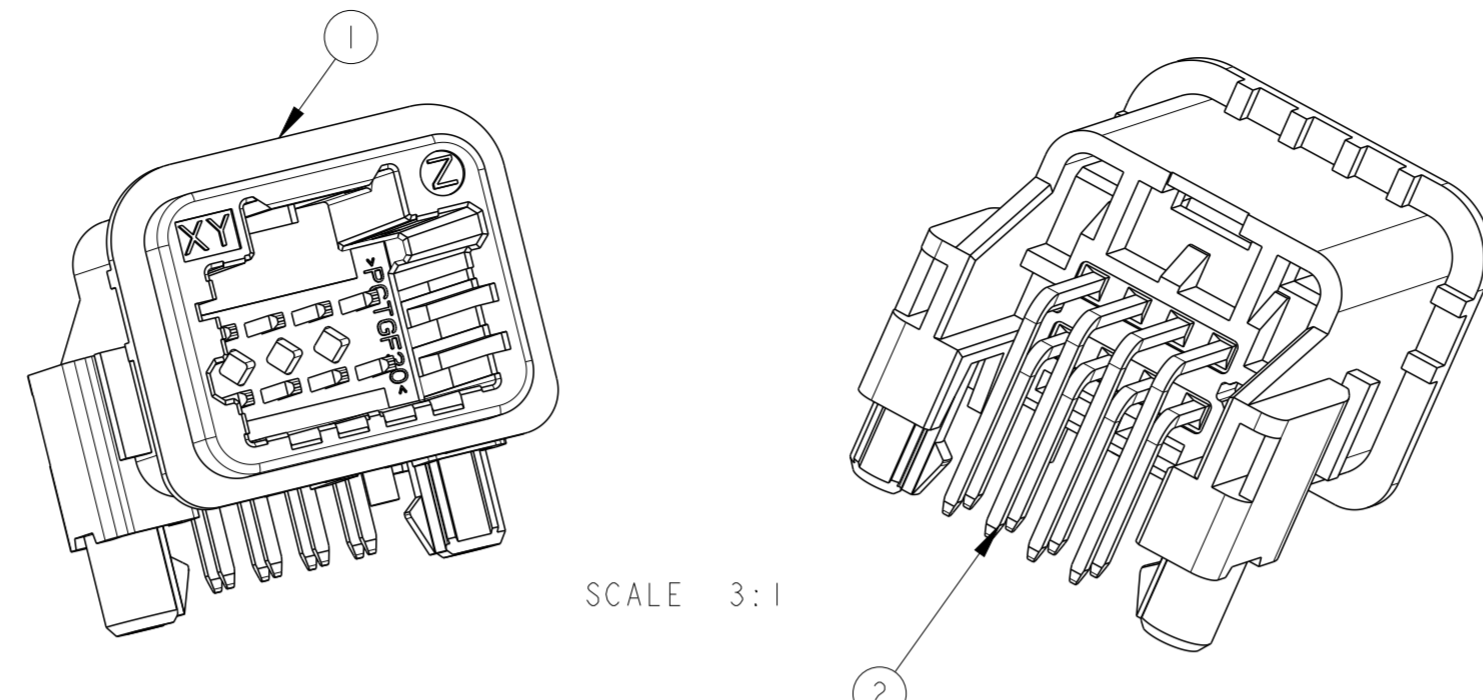
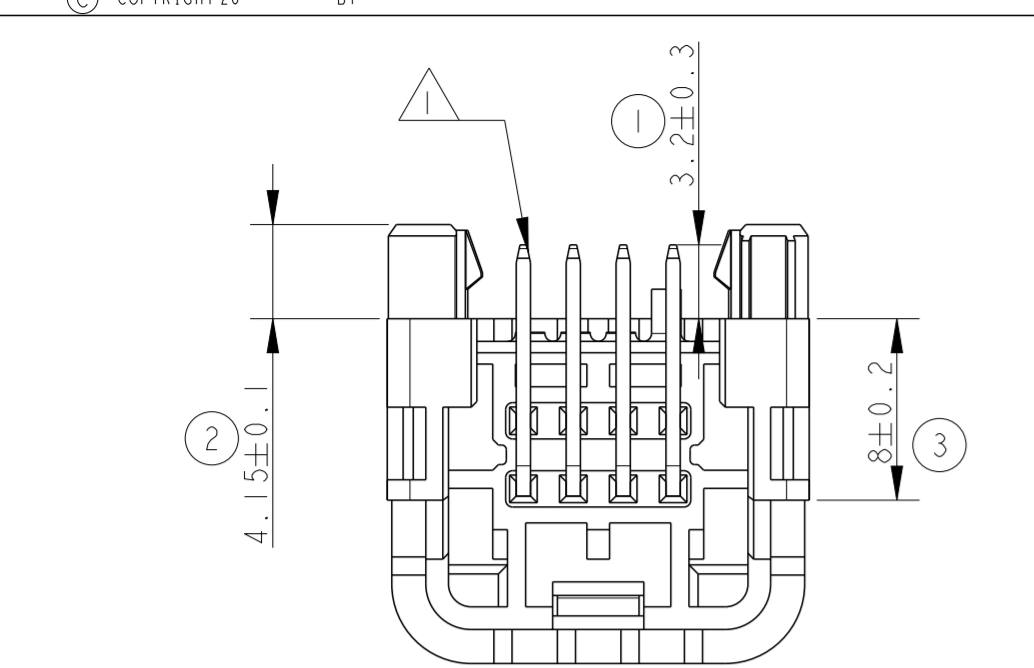
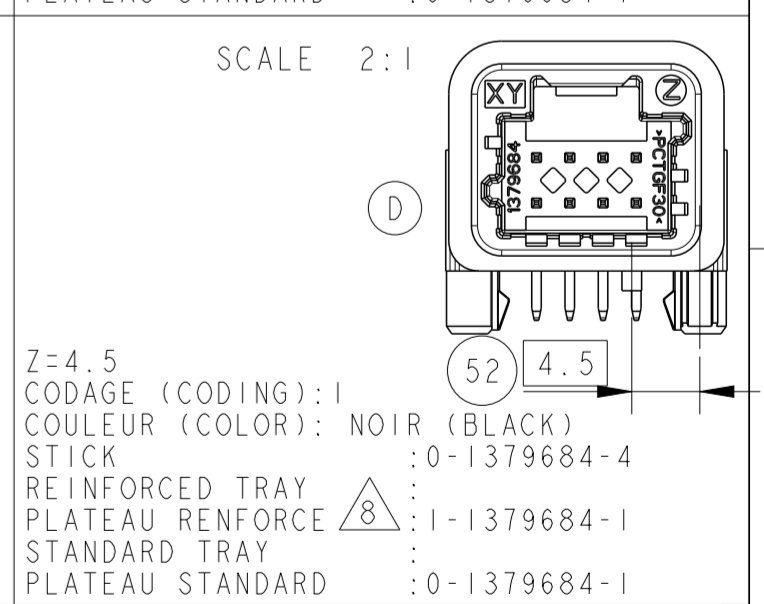
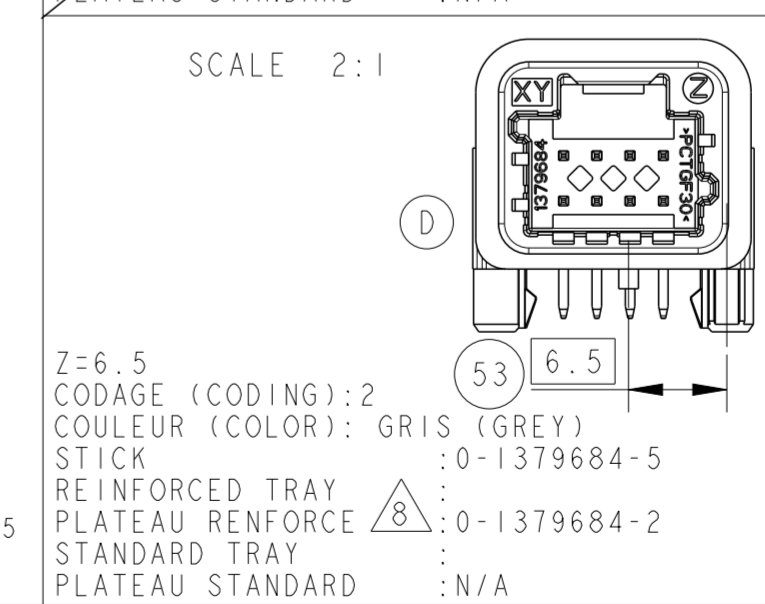


LOC		DIST		REVISIONS		
P	LTR	DESCRIPTION	DATE	DWN	APVD	
J		0-1379684-7 AVAILABLE FOR ALL CUSTOMER	29APR2013	RC	JL	



- Δ 1 PRE ETAME : 1-3µm Sn sur 1.3-2.2µm Ni
PRE-TIN :
- Δ 2 REFERENCE MATIERE
MATERIAL REFERENCE
- Δ 3 NUMERO D'EMPREINTE
CAVITY NUMBER
- Δ 4 REFERENCE TE (ASSEMBLAGE)
- Δ 5 INDICE DE REVISION
PLASTIC PART REVISION
- Δ 6 DATE D'ASSEMBLAGE A-SS-J-L-E-R
Année - semaine - jour - ligne - equipe - rev PRC
- Δ 7 Soudabilité suivant norme française NF-A-89 400
Soudability according standard French
- Δ 8 PLATEAU ESD suivant norme : IEC - 61340-5-1
R plateau 10E9Ω-10E12Ω
TRAY ESD ACCORDING TO : IEC-61340-5-1
R tray 10E9Ω-10E12Ω
- Δ 9 CONDITIONNEMENT suivant spec : 107-15644 / 107-15645
PACKAGING ACCORDING SPEC :
- Δ 10 NUMERO DE MOULE
NUMBER OF THE MOULD



EN ACCORD AVEC LA SPEC D'INTERFACE:
REN 8200 311 959 SAUF AUTRE SPECIFICATION
ACCORDING TO INTERFACE
REN 8200 311 959 EXCEPTED OTHER SPECIFICATION

N°	QTE	DESCRIPTION	MATIERE MATERIAL	FINITION FINISH
2	8	BROCHE TH PIN TH	CuSn6	PRE ETAME PRE TIN
1	1	BOITIER 8V 025 HOUSING 8POS 025	PCTGF30	-

THIS DRAWING IS A CONTROLLED DOCUMENT.

DIMENSIONS:	TOLERANCES UNLESS OTHERWISE SPECIFIED:	DWN	22-SEP-04
mm	±0.30	CHK	R CHARLES
MATERIAL	FINISH	APVD	22-SEP-04
-	-	CHK	D REIFEL
-	-	APVD	01-OCT-04
-	-	CHK	J LALANGE
-	-	PRODUCT SPEC	108-15383
-	-	APPLICATION SPEC	-
-	-	WEIGHT	3.3g
CUSTOMER DRAWING		SCALE	3:1

STE TE Connectivity

EMBASE 8 VOIES 025 COUDEE
025 8W RIGHT ANGLE HEADER

SIZE: A2 CAGE CODE: 00779 DRAWING NO: 0-1379684

RESTRICTED TO: -

SHEET 1 OF 1 REV J