



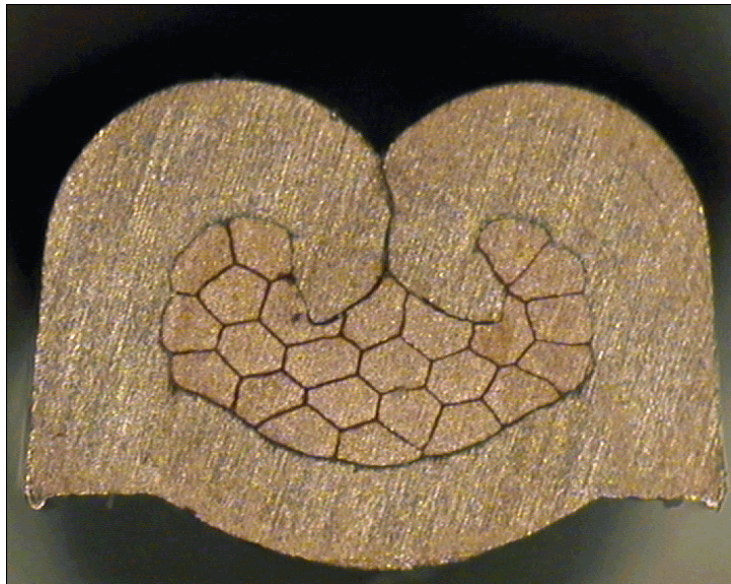
DELPHI PN 13697414



cable:  
 $0,50 \text{ mm}^2 = 16 \times 0,21 \text{ mm}$

crimp height:  
1,25 mm

crimp width:  
1,95 mm



cable:  
 $0,75 \text{ mm}^2 = 24 \times 0,21 \text{ mm}$

crimp height:  
1,35 mm

crimp width:  
1,95 mm