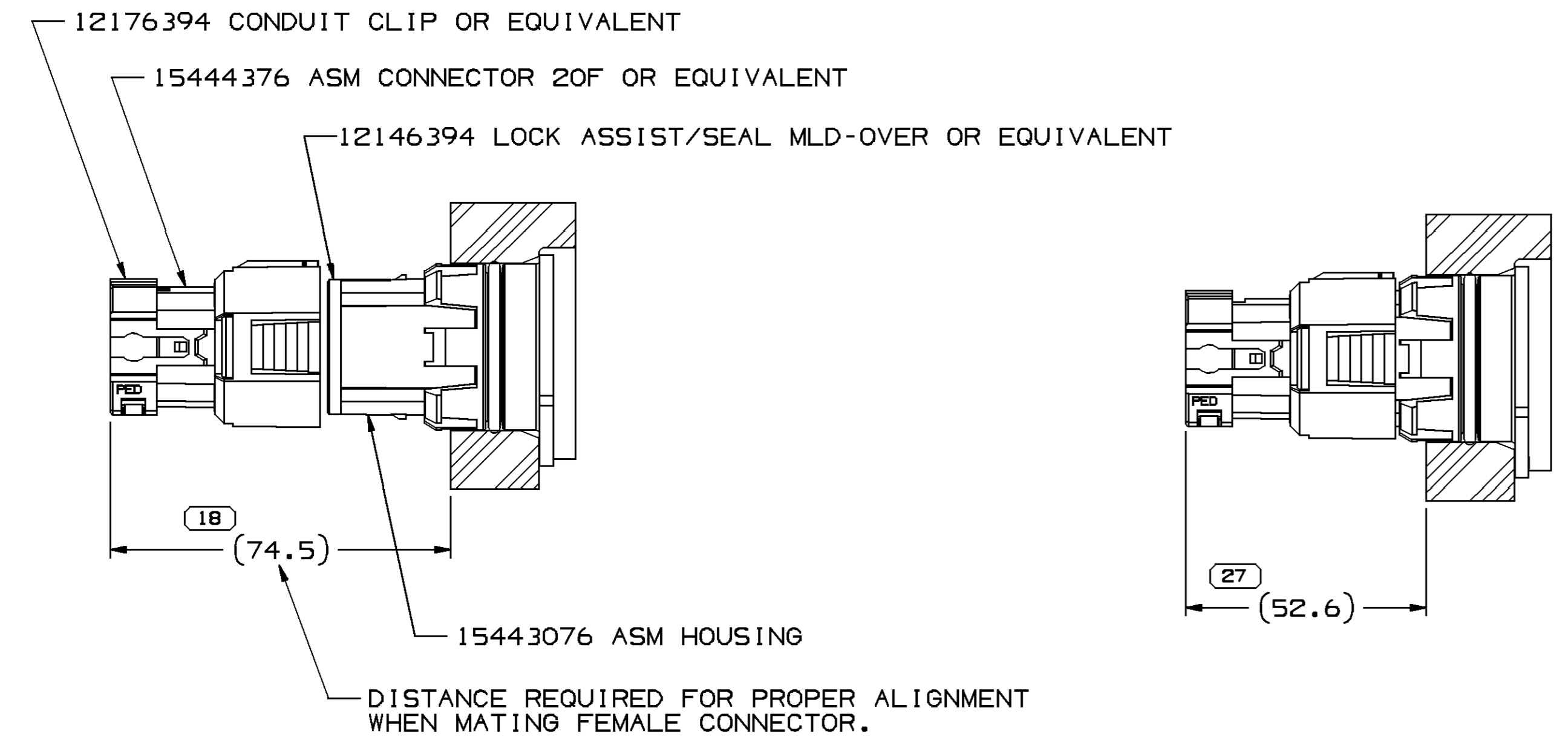


KEY PRODUCT CHARACTERISTIC SYMBOLS (◇, ⊕) INDICATE PRODUCT CHARACTERISTICS THAT REQUIRE SPECIAL CARE, DOCUMENTATION, AND ACCEPTANCE CRITERIA PER GM 1805 QN AND DELPHI PACKARD ELECTRIC SYSTEMS PROCEDURES.

| KEY PRODUCT CHARACTERISTICS |                |
|-----------------------------|----------------|
| ◇ SAFETY/COMPLIANCE         | ◇ FIT/FUNCTION |
| TOTAL ON DRAWING            | 1              |
| LAST NUMBER USED            | 1              |

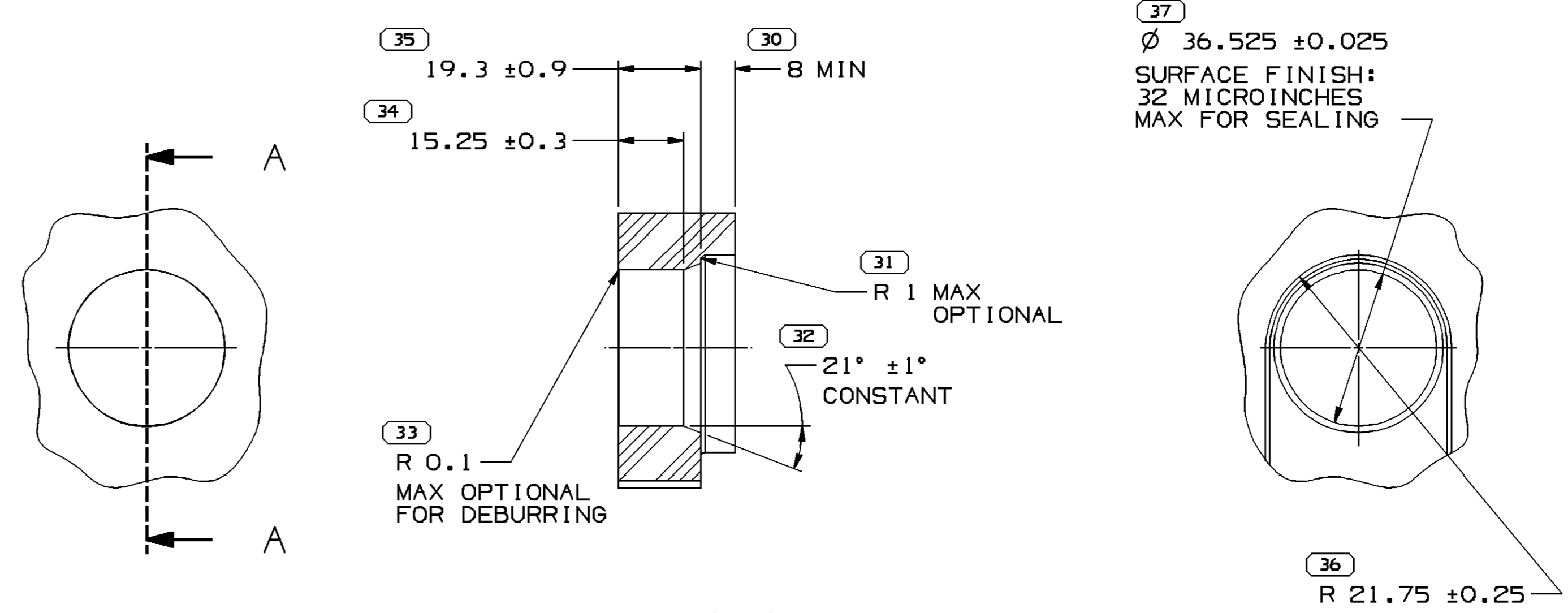
| SYMBOL DEFINITION  |  | TOTAL NO OF INSPECTIONS REQUIRED | MISSING SYMBOLS          |
|--|--|----------------------------------|--------------------------|
| A DIMENSION WITHOUT AN INSPECTION REPORT SYMBOL ( ) DOES NOT REQUIRE INSPECTION. IT MAY BE CONTROLLED ON THE INDIVIDUAL COMPONENT DRAWING. |  | 74                               | NO MISSING SYMBOL NUMBER |
|  |  | LAST NO. USED                    | 37                       |

| DATE   | STO | REV | N/P | CHG | ZONE | REVISION HISTORY                                     | AUTH   | DR  | AP/VD | AP/VD 2 |
|--------|-----|-----|-----|-----|------|--|--------|-----|-------|---------|
| 02SE04 | R   | 01  | -   | -   | -    | 13510422- RELEASED<br>15443076- WAS SEPARATE DRAWING | 258573 | ADK | ADK   | CD      |
| 11A005 | R   | 02  | -   | -   | -    | 13539169 - RELEASED                                  | 271248 | CCV | FRG   | CSD     |
| 01MR06 | R   | 03  | -   | -   | -    | 13539169 - OBSOLETE                                  | 278033 | MDH | JVM   | EEM     |
| 170C06 | R   | 04  | -   | -   | -    | 13539169 - REINSTATED                                | 285680 | JTZ | ANG   | MKM     |
| 02AP07 | R   | 05  | -   | -   | -    | ALL PARTS - REVISED CHART                            | 400899 | MM  | MM    | CD      |
| 07.N07 | R   | 06  | -   | -   | -    | ALL PARTS - ADDED NOTE 5                             | 401613 | PCP | PCP   | CSD     |



MATING INFORMATION  
SCALE 1:1

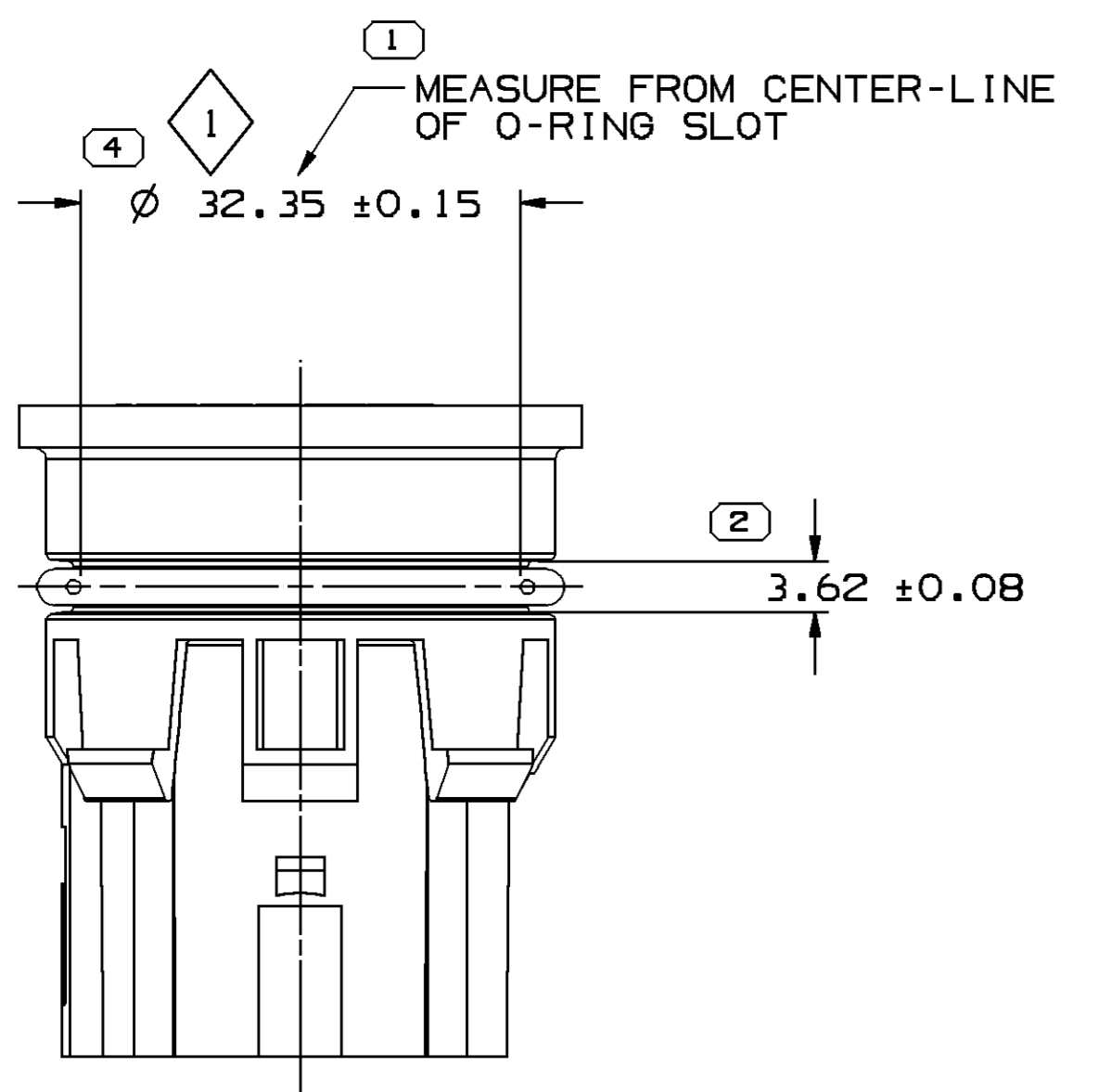
INSPECTION SYMBOLS SHOWN IN THESE VIEWS ARE FOR REFERENCE ONLY



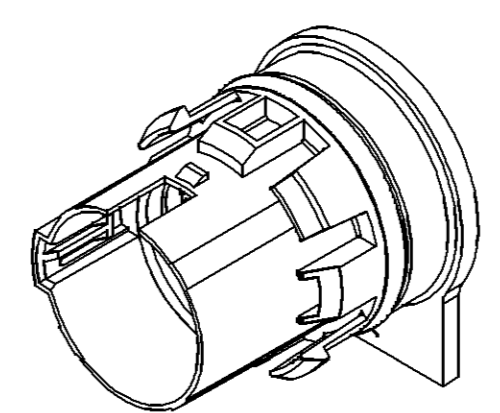
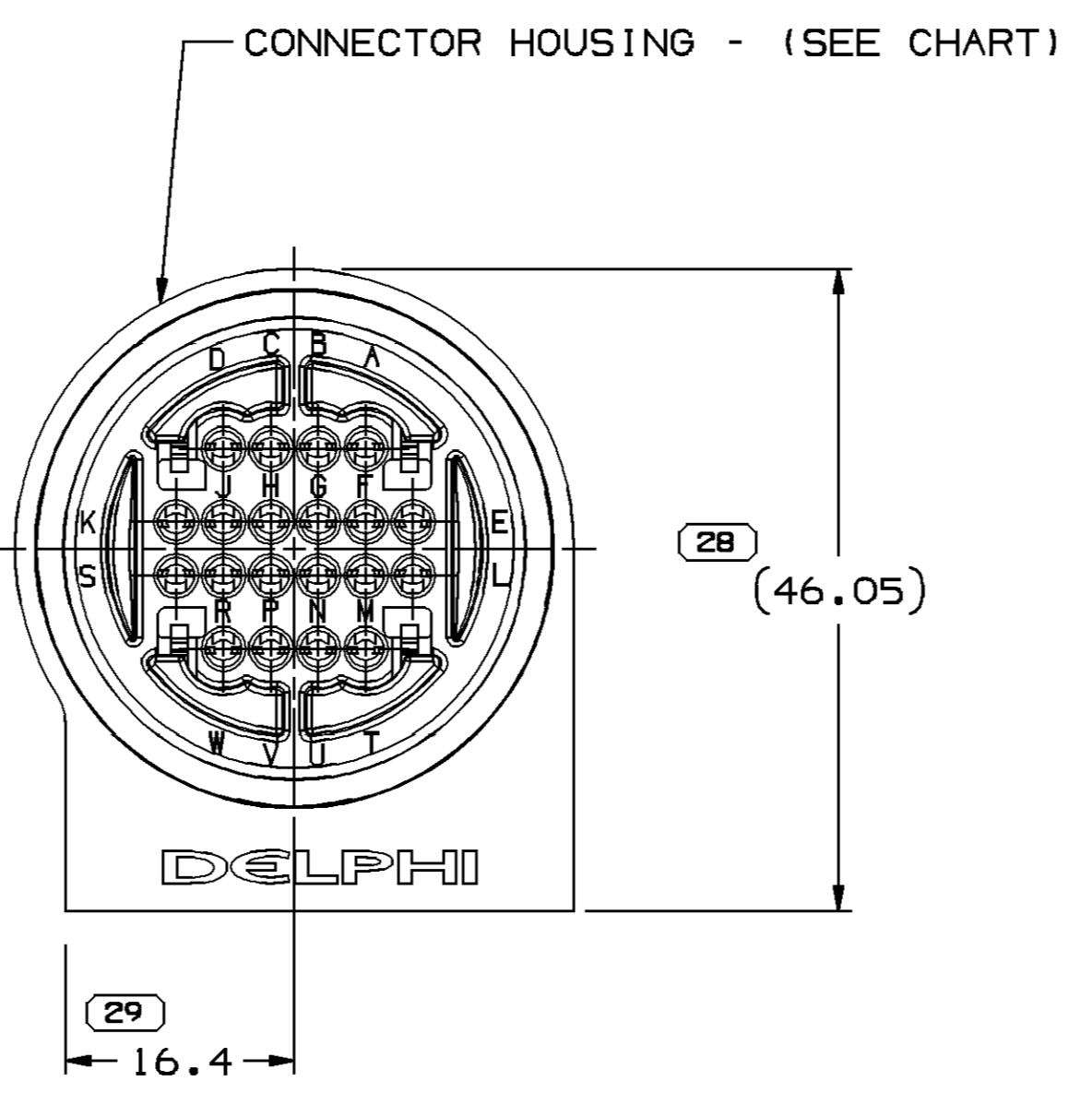
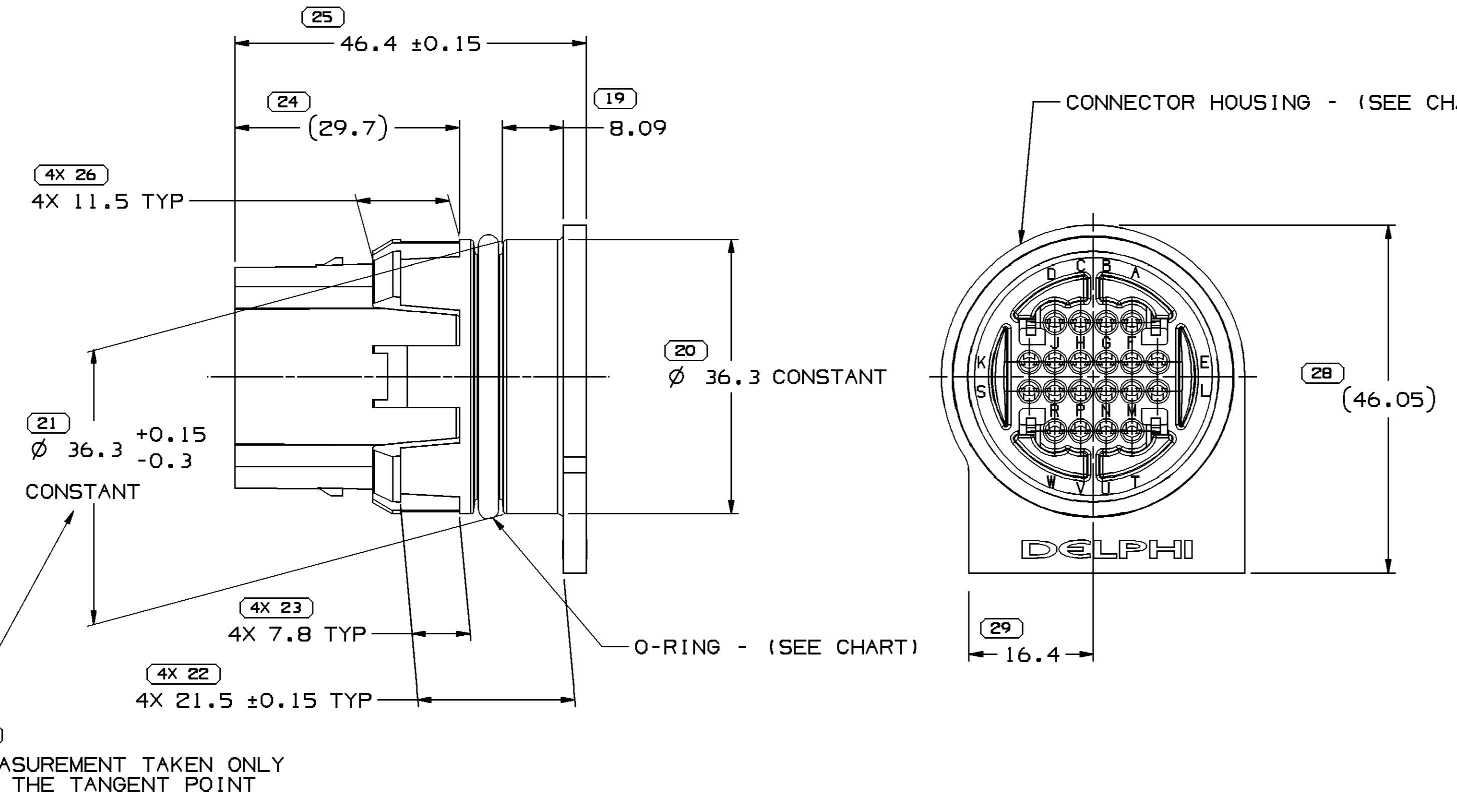
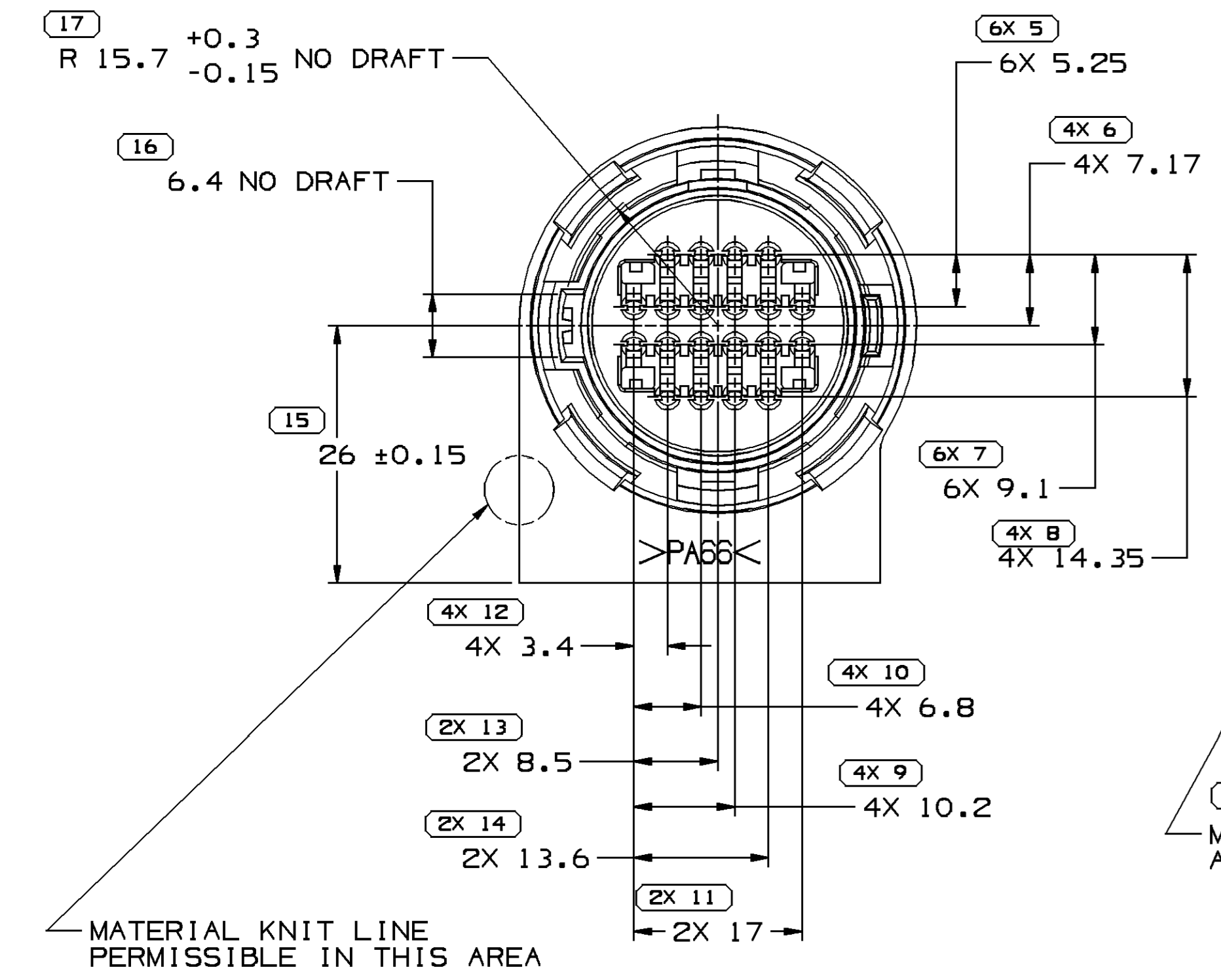
SECTION A-A  
SCALE 1:1  
MOUNTING HOLE DETAIL - PREFERRED

- NOTES
- UNLESS OTHERWISE SPECIFIED AND/OR INDICATED: DIMENSIONS ARE TO FACE OF VIEW SHOWN AND AUTOMATICALLY ROUNDED BY COMPUTER FOR INSPECTION (SEE MATH MODEL FOR PRECISE DIMENSIONS). FOR ALL OTHER DIMENSIONS NOT SHOWN BUT REQUIRED FOR TOOL BUILD, SEE MATH MODEL FOR PRECISE TOOL PATH DATA. ALL RADII 0.4
  - WHEN USING THIS INFORMATION FOR A NEW DESIGN, REQUEST THE LATEST COPY OF THIS PRINT FROM PACKARD ELECTRIC DIVISION.

INSPECTION SYMBOLS SHOWN IN THESE VIEWS ARE FOR REFERENCE ONLY



- NOTES
- UNLESS OTHERWISE SPECIFIED AND/OR INDICATED: DIMENSIONS ARE TO FACE OF VIEW SHOWN AND AUTOMATICALLY ROUNDED BY COMPUTER FOR INSPECTION (SEE MATH MODEL FOR PRECISE DIMENSIONS). FOR ALL OTHER DIMENSIONS NOT SHOWN BUT REQUIRED FOR TOOL BUILD, SEE MATH MODEL FOR PRECISE TOOL PATH DATA.
  - REFERENCE MATING COMPONENTS OR EQUIVALENT: CONNECTOR 15443074
  - THIS PART ACCEPTS THE FOLLOWING COMPONENTS OR EQUIVALENT: TERMINAL LOCK/SEAL ASSIST 12146394 CAVITIES TO ACCEPT 12160551 TERMINAL OR EQUIVALENT.
  - WHEN PARTS ARE SHIPPED THEY MUST BE PACKED IN PLASTIC BAGS OR SHIPPING CONTAINERS MUST BE LINED WITH PLASTIC LINERS. BAGS OR LINERS MUST BE SEALED TO AVOID ENTRY OR FOREIGN MATTER.
  - HYGROSCOPIC MATERIALS ABSORB AND RELEASE MOISTURE DEPENDING ON THE RELATIVE HUMIDITY OF THE ENVIRONMENT. HYGROSCOPIC POLYMERS SUCH AS PA6 AND PA66 (NYLONS IN GENERAL) REQUIRE PROPER STORAGE AND PACKAGING. EVERY EFFORT IS MADE BY DELPHI PACKARD TO CORRECTLY PACKAGE THIS PRODUCT AT INITIAL SHIPMENT FROM THE DELPHI PRODUCING PLANT. FAILURE TO PROTECT COMPONENTS COMPOSED OF HYGROSCOPIC MATERIALS DURING SUBSEQUENT HANDLING, STORAGE AND PACKAGING, PARTICULARLY IN HIGH HUMIDITY ENVIRONMENTS CAN RESULT IN DIMENSIONAL CHANGE FOR WHICH DELPHI WILL NOT BE LIABLE.



MATERIAL KNIT LINE PERMISSIBLE IN THIS AREA

MEASUREMENT TAKEN ONLY AT THE TANGENT POINT

| PART NO  | REV | N/P | STATUS | CONN BODY | CONN COLOR | O-RING   |
|----------|-----|-----|--------|-----------|------------|----------|
| 13539169 | 01  | AD  | -      | 13539168  | BLU        | 12129390 |
| 13510422 | 01  | AB  | -      | 13510421  | GRA LT     | 12129390 |
| 15443076 | 01  | AF  | -      | 15443075  | BLK        | 12129390 |

| DIMENSIONAL RANGE (MM) | TOLERANCE UNLESS OTHERWISE SPECIFIED |
|------------------------|--------------------------------------|
| FROM > 0 TO > 20       | ± 0.2                                |
| > 20 TO > 30           | ± 0.3                                |
| > 30 TO > 50           | ± 0.4                                |
| > 50 TO > 100          | ± 0.5                                |
| > 100 TO > 200         | ± 0.6                                |
| > 200 TO > 300         | ± 0.8                                |
| > 300 TO > 400         | ± 1.0                                |
| ANGULAR TOLERANCE 2C°  | ± 1.2                                |

| PART DRAWING  |              |
|---|--------------|
| STYLE   | D            |
| VOLUME 10/11  | DISTR CODE   |
| UNLESS OTHERWISE SPECIFIED  |              |
| THIS DOCUMENT IS IN ACCORDANCE WITH ASME Y14.5M-1994 AS MODIFIED BY THE 20 DIMENSIONAL TOLERANCE AND RELATED DATUM APPL. RES. FILE #10PERFECT FROM AT MFG DOES NOT APPLY WITH RELATIONSHIP BETWEEN FEATURES. SEPARATE POSITION CALLOUTS MAY BE SHOWN SEPARATELY, REGARDLESS OF DATUM REFERENCE. |              |
| ALL DIMENSIONS ARE IN MILLIMETERS   |              |
| PROCESS SENSITIVE DIMENSION   | REFERENCE    |
| 12146483  |              |
| THIRD ANGLE PROJECTION  | DO NOT SCALE |
| USE MATH DATA   |              |

**DELPHI**  
DELPHI PACKARD ELECTRICAL/ELECTRONIC ARCHITECTURE  
WARREN, OH

| DR                      | DATE   |
|-------------------------|--------|
| APV01 ADAM D. KIMBERLIN | 02SE04 |
| APV02 ADAM D. KIMBERLIN | 02SE04 |
| APV03 CHRIS DE PROFIO   | 02SE04 |
| APV04                   |        |

SUBSTANCES OF CONCERN AND RECYCLED CONTENT PER DELPHI 10949001

DRAWING NAME  
TAXI ASM CONN M MIC/P 100W SLD

DRAWING NUMBER  
**13511121**

| SCALE | FRAME NO | SHEET NO | REV | N/P |
|-------|----------|----------|-----|-----|
| 2:1   | 1 OF 1   | 1 OF 1   | R   | 06  |