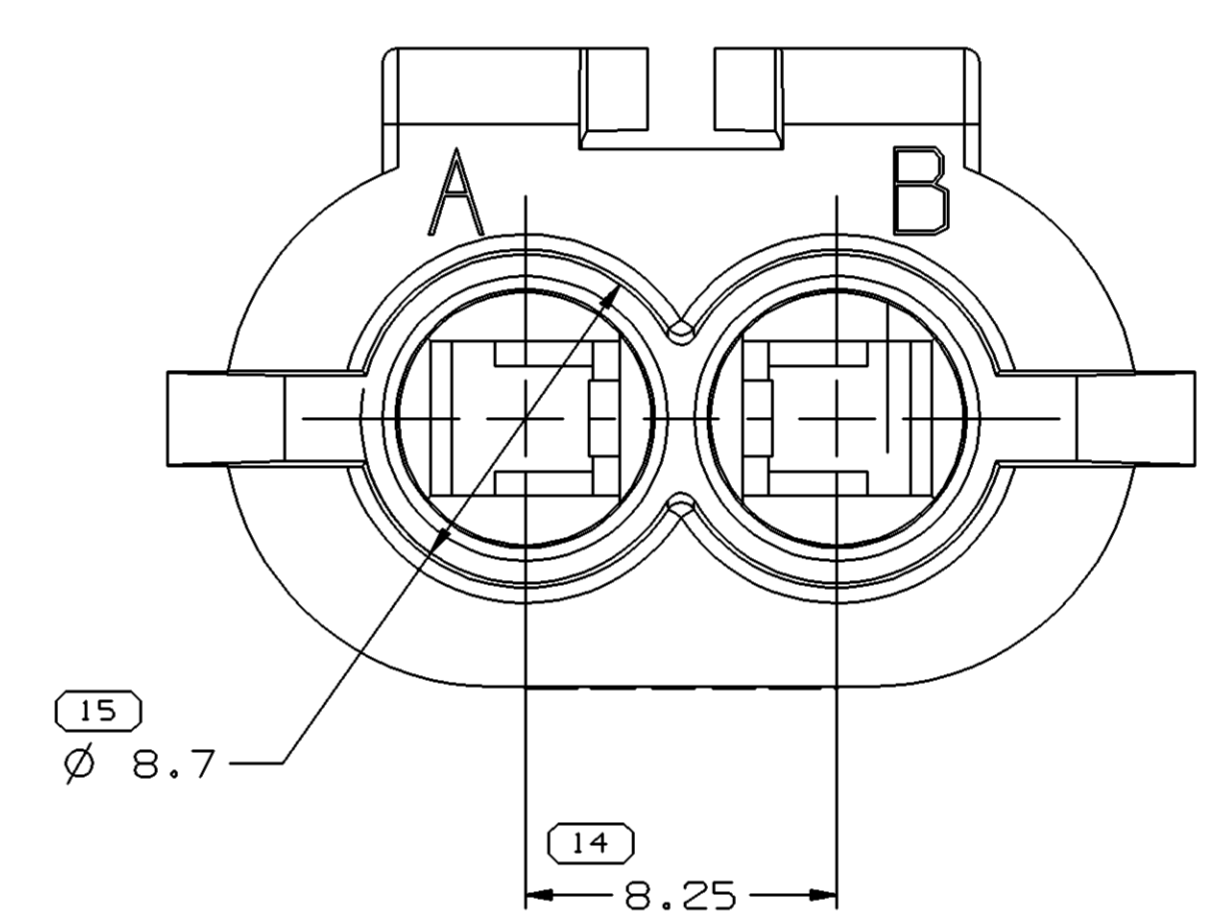
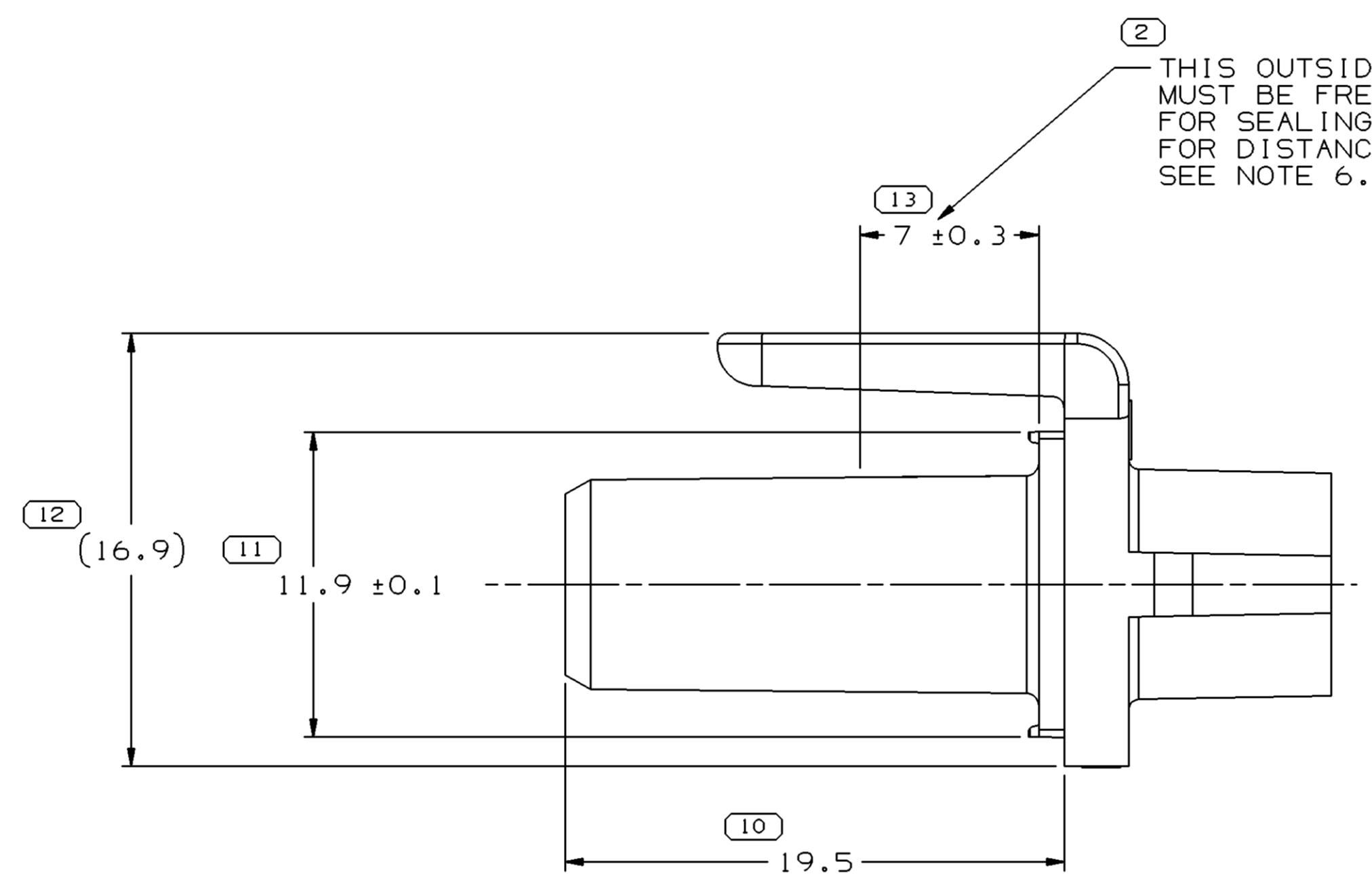
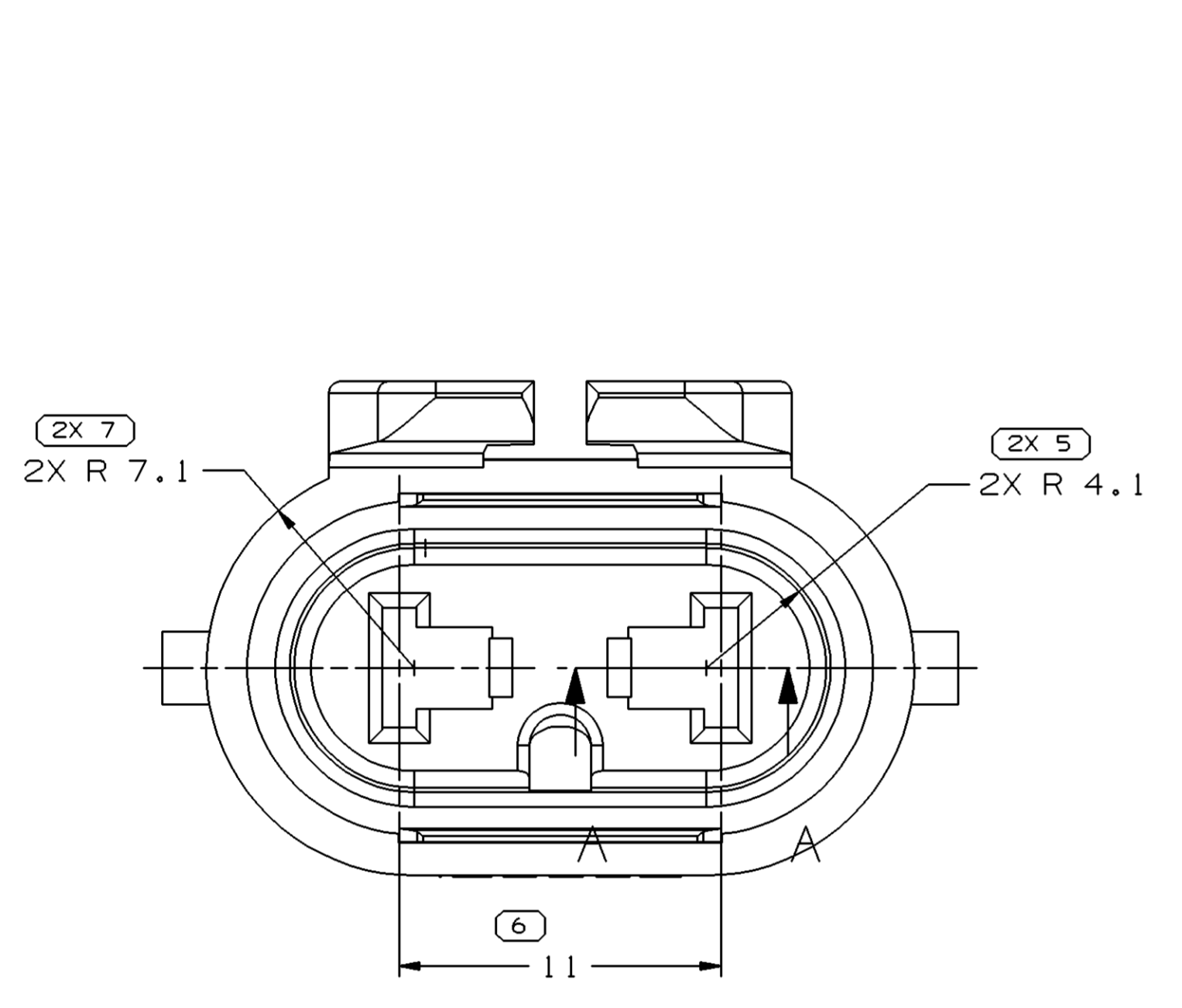
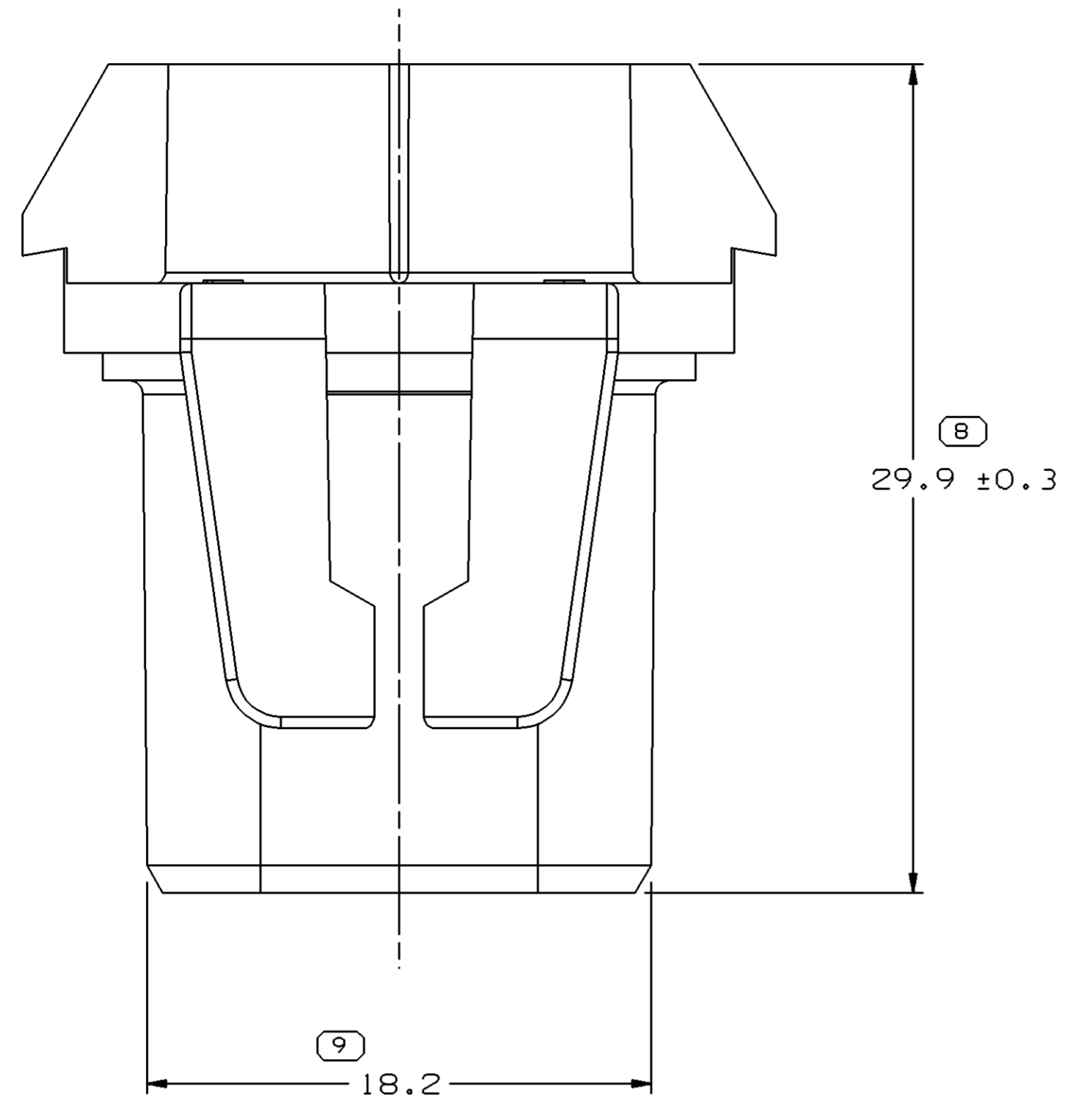
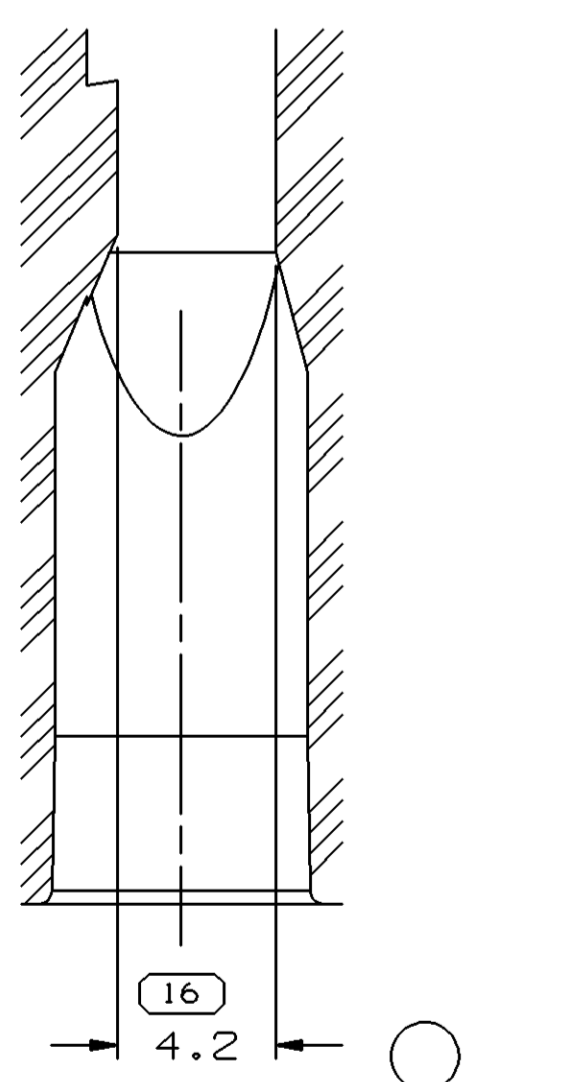


SYMBOL DEFINITION		MISSING SYMBOLS	
A DIMENSION WITHOUT AN INSPECTION REPORT SYMBOL DOES NOT REQUIRE INSPECTION. IT MAY BE CONTROLLED ON THE INDIVIDUAL COMPONENT DRAWING.	TOTAL NO OF INSPECTIONS REQUIRED	NO MISSING SYMBOL NUMBER	
	18		
	LAST NO. USED		
	16		

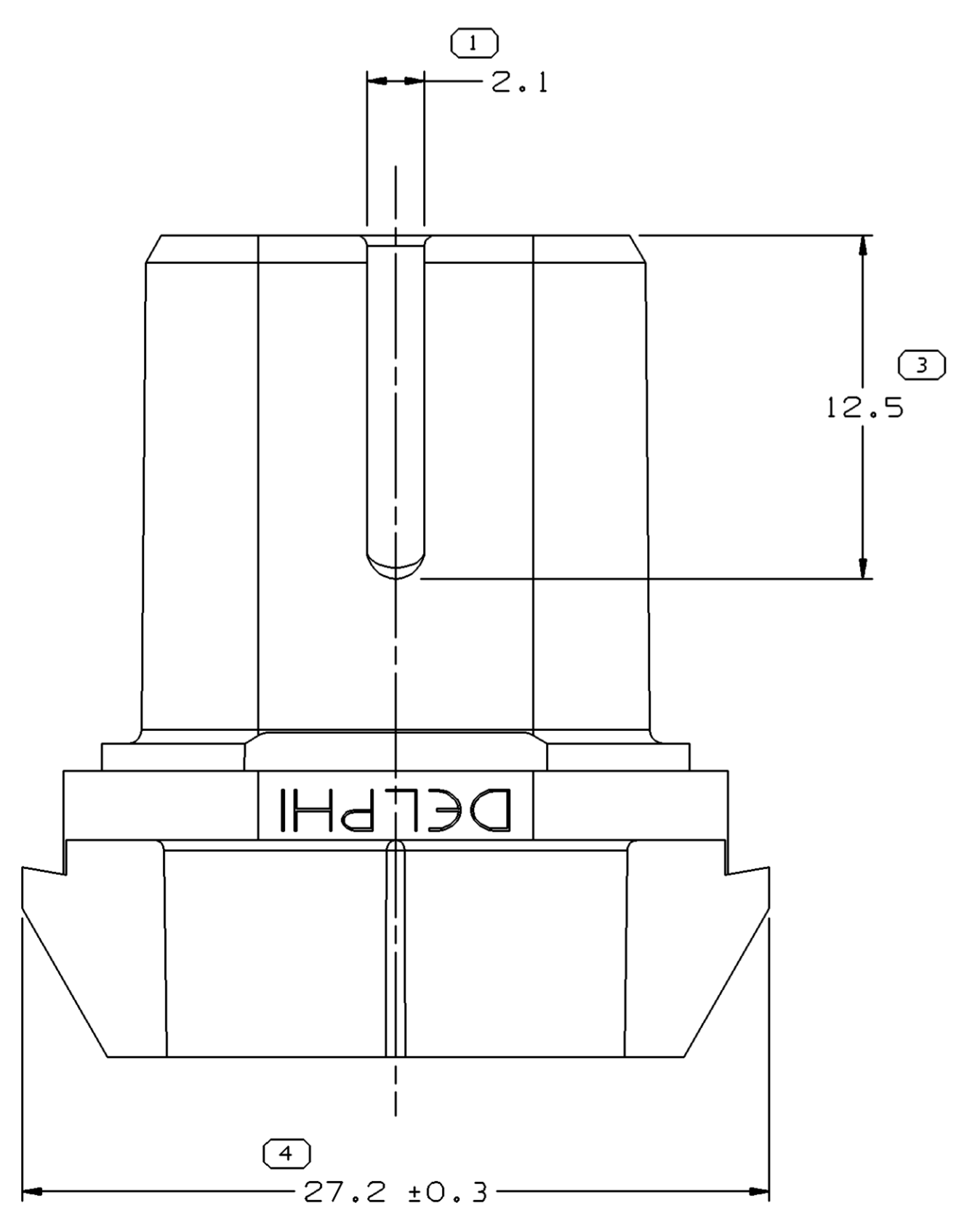
DWO STATUS				REVISION HISTORY				AUTH		DR		APVD	
DATE	STG	REV	W/P	CHG	ZONE	REVISION HISTORY				DR	APVD	1	2
23AP03	R	H4	-	-	-	CLEARED REV COL; MAT'L SPEC WAS R0071784 & REMOVED DIMS 12 PLCS				239914	EGR		
17SE03	R	H5	-	-	-	ADDED NOTE (2 PLCS) & DIM				246004	RCH	RCH	ET
16AU04	R	O9	-	-	-	ADDED DIM 4.2; ADDED SECTION VIEW A-A. REVISED GRAPHICS; UPDATED NOTE #4 & #5. REMOVED OPTIONAL CONSTRUCTION VIEW				256880	TSH	TSH	MR



THIS OUTSIDE SURFACE MUST BE FREE OF DEFECTS FOR SEALING ALL AROUND FOR DISTANCE AS SHOWN. SEE NOTE 6.

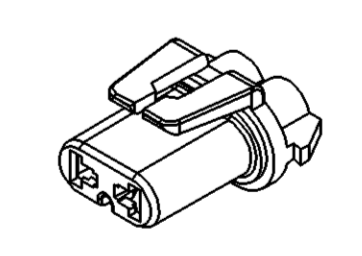


SECTION A-A



NOTES

- UNLESS OTHERWISE SPECIFIED AND/OR INDICATED: DIMENSIONS ARE TO FACE OF VIEW SHOWN AND AUTOMATICALLY ROUNDED BY COMPUTER FOR INSPECTION. (SEE MATH MODEL FOR PRECISE DIMENSIONS.) FOR ALL OTHER DIMENSIONS NOT SHOWN BUT REQUIRED FOR TOOL BUILD, SEE MATH MODEL FOR PRECISE TOOL PATH DATA.
- MATING COMPONENTS OR EQUIVALENT: CONNECTOR -GUIDE DIV. LIGHT SOURCE E-1008-182 (9006 BULB) LOW BEAM.
- THIS PART ACCEPTS THE FOLLOWING COMPONENTS OR EQUIVALENT: CAVITIES TO ACCEPT 12077412 TERMINAL SECONDARY LOCK 12059185 CONNECTOR SEAL 12059184
- MATERIAL RECYCLING CODE PER ISO 11469. (2.3)X(0.1) CHARACTERS AS SHOWN TO BE LOCATED ON ANY EXTERIOR SURFACE. OPTIONAL CONSTRUCTION TO BE NO MATERIAL RECYCLING CODE.
- (2.3)X(0.1) DELPHI CORPORATE BRAND TO BE LOCATED ON ANY EXTERIOR SURFACE, PREFERABLY VISIBLE AT FINAL ASSEMBLY. OPTIONAL CONSTRUCTION TO BE "PED".
- IF PART SHOWS A FLOWLINE REFER TO VPS B-59.



DIMENSIONAL RANGE (MM)		CHART SET	
FROM	TO	FROM	TO
> 0	> 20	> 70	> 100
> 20	> 30	> 100	> 150
> 30	> 40	> 150	> 200
> 40	> 50	> 200	> 250
> 50	> 60	> 250	> 300
> 60	> 70	> 300	> 400
TOLERANCE UNLESS OTHERWISE SPECIFIED		ANGULAR TOLERANCE ±2°	
±0.15	±0.2	±0.3	±0.4
±0.4	±0.5	±0.6	±0.8
±1	±1.2		

DWO TYPE		PART DRAWING	
STYLE	VOLUME (COP)	DISTR CODE	
	3,277	D	
UNLESS OTHERWISE SPECIFIED			
THIS DOCUMENT IS IN ACCORDANCE WITH ASME Y14.5M-1994 AS AMENDED BY THE 2018 DIMENSIONING AND TOLERANCING ADDENDUM - 1997. ALL DIMENSIONAL TOLERANCES AND RELATED DATUM APPL. RULES, IF PRESENT, FORM A PART OF THIS DRAWING. DIMENSIONS ARE IN MILLIMETERS UNLESS OTHERWISE SPECIFIED. DIMENSIONS ARE IN MILLIMETERS UNLESS OTHERWISE SPECIFIED.			
REFERENCE		THIRD ANGLE PROJECTION	
DO NOT SCALE		USE MATH DATA	

DELPHI
DELPHI PACKARD ELECTRIC SYSTEMS
WARREN, OH

DR	DATE
APVD1 R, PINA	07 JUN 93
APVD2 D, STEELE	110C93
APVD3 R, ADDUCI	190C94
APVD4	
APVD5	

SUBSTANCES OF CONCERN AND RECYCLED CONTENT PER DELPHI 10949001

MATERIAL M3592025 - PA66 IM HS GRA MD

DRAWING NAME
CONN 2 F M/P 280 GRA SLD

DRAWING NUMBER
12059180

SIZE A0 SCALE 5:1 FRAME NO 1 OF 1 SHEET NO 1 OF 1 REV W/P 09