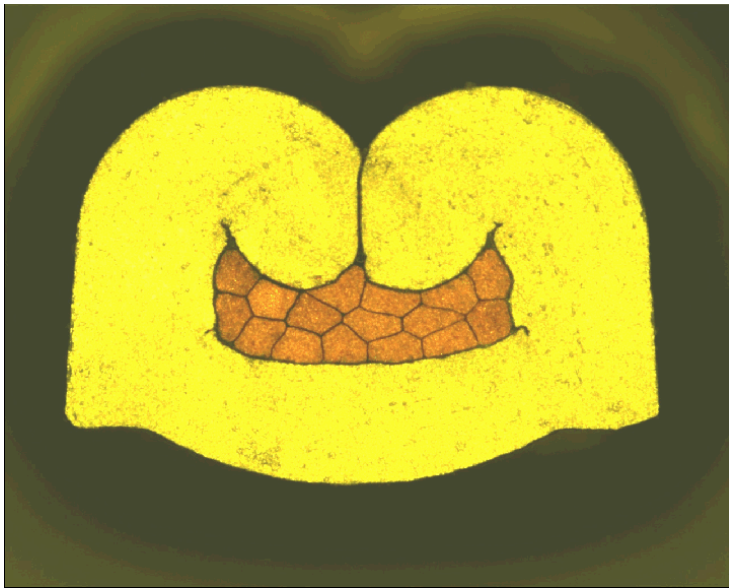




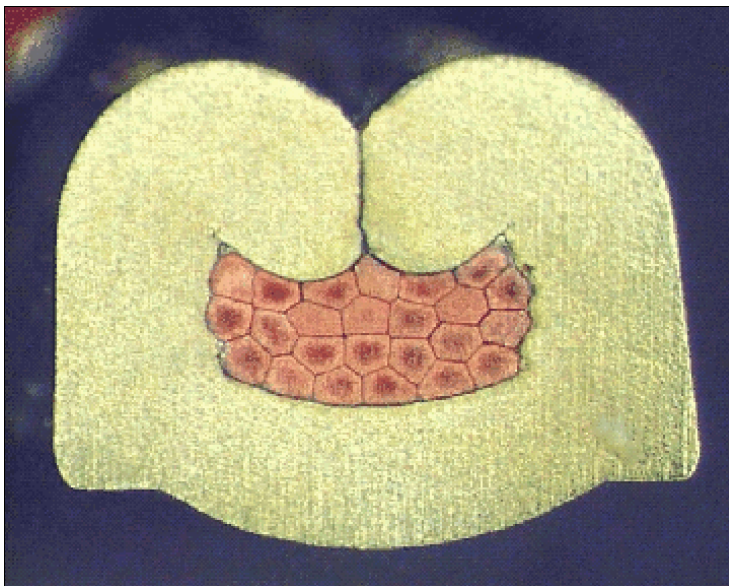
DELPHI PN 12124512



cable:  
 $0,50 \text{ mm}^2 = 16 \times 0,21 \text{ mm}$

crimp height:  
1,60 mm

crimp width:  
2,40 mm



cable:  
 $0,75 \text{ mm}^2 = 24 \times 0,21 \text{ mm}$

crimp height:  
1,70 mm

crimp width:  
2,40 mm