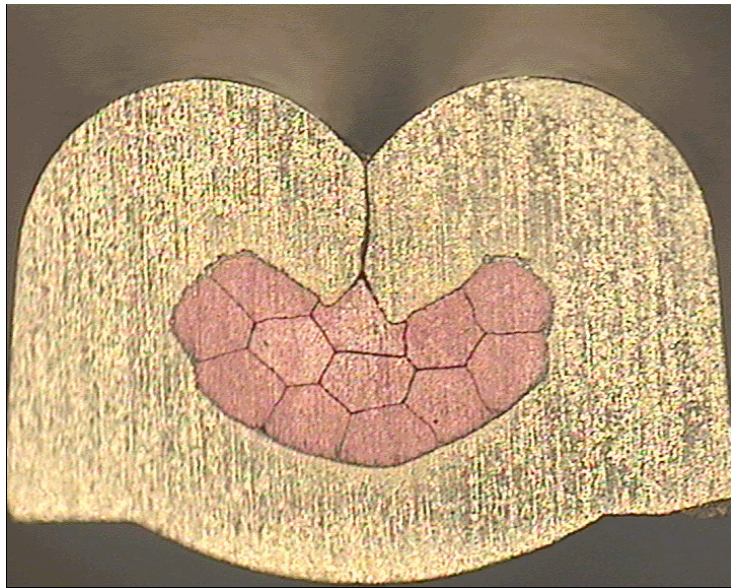




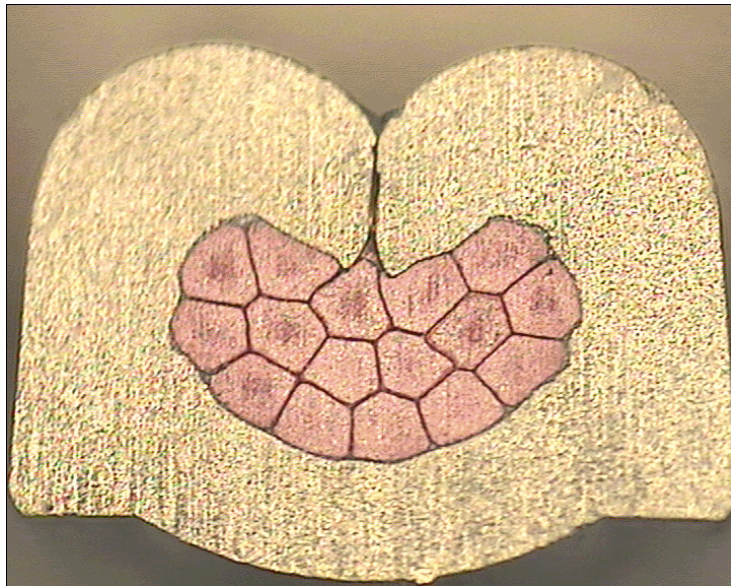
DELPHI PN 12191818



cable:  
 $0,35 \text{ mm}^2 = 12 \times 0,21 \text{ mm}$

crimp height:  
1,15 mm

crimp width:  
1,65 mm



cable:  
 $0,50 \text{ mm}^2 = 16 \times 0,21 \text{ mm}$

crimp height:  
1,25 mm

crimp width:  
1,70 mm