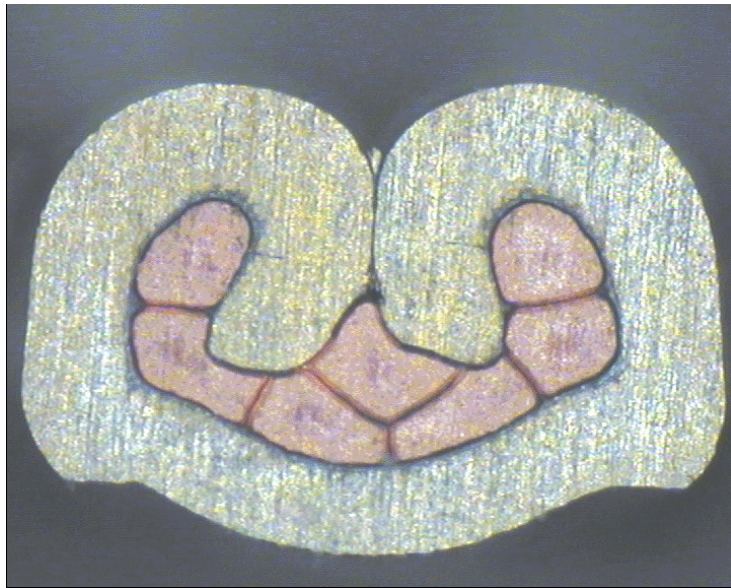




DELPHI PN 12177007



cable:  
 $0,35 \text{ mm}^2 = 7 \times 0,26 \text{ mm}$

crimp height:  
0,95 mm

crimp width:  
1,40 mm



cable:  
 $0,50 \text{ mm}^2 = 19 \times 0,19 \text{ mm}$

crimp height:  
1,05 mm

crimp width:  
1,40 mm