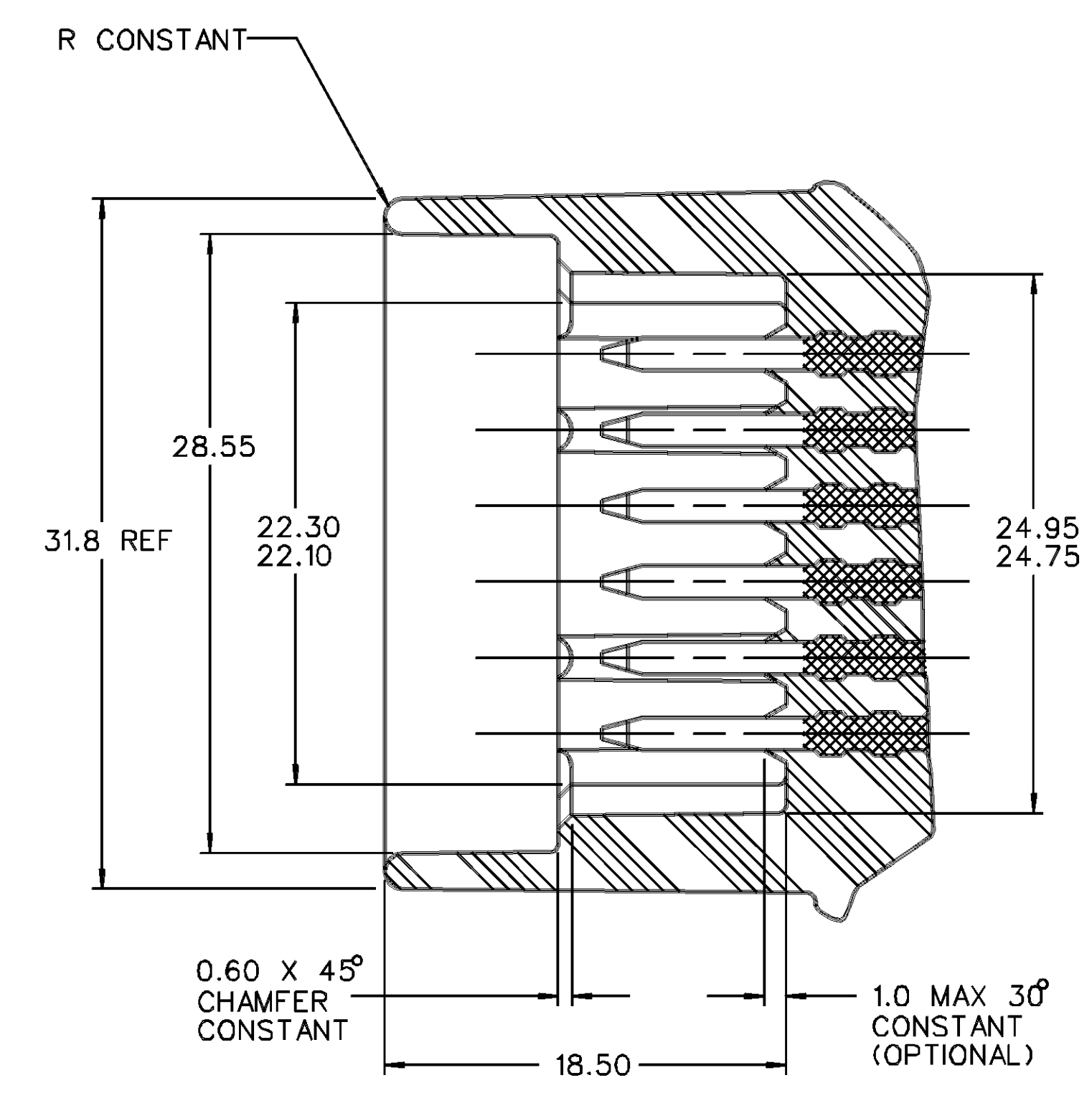
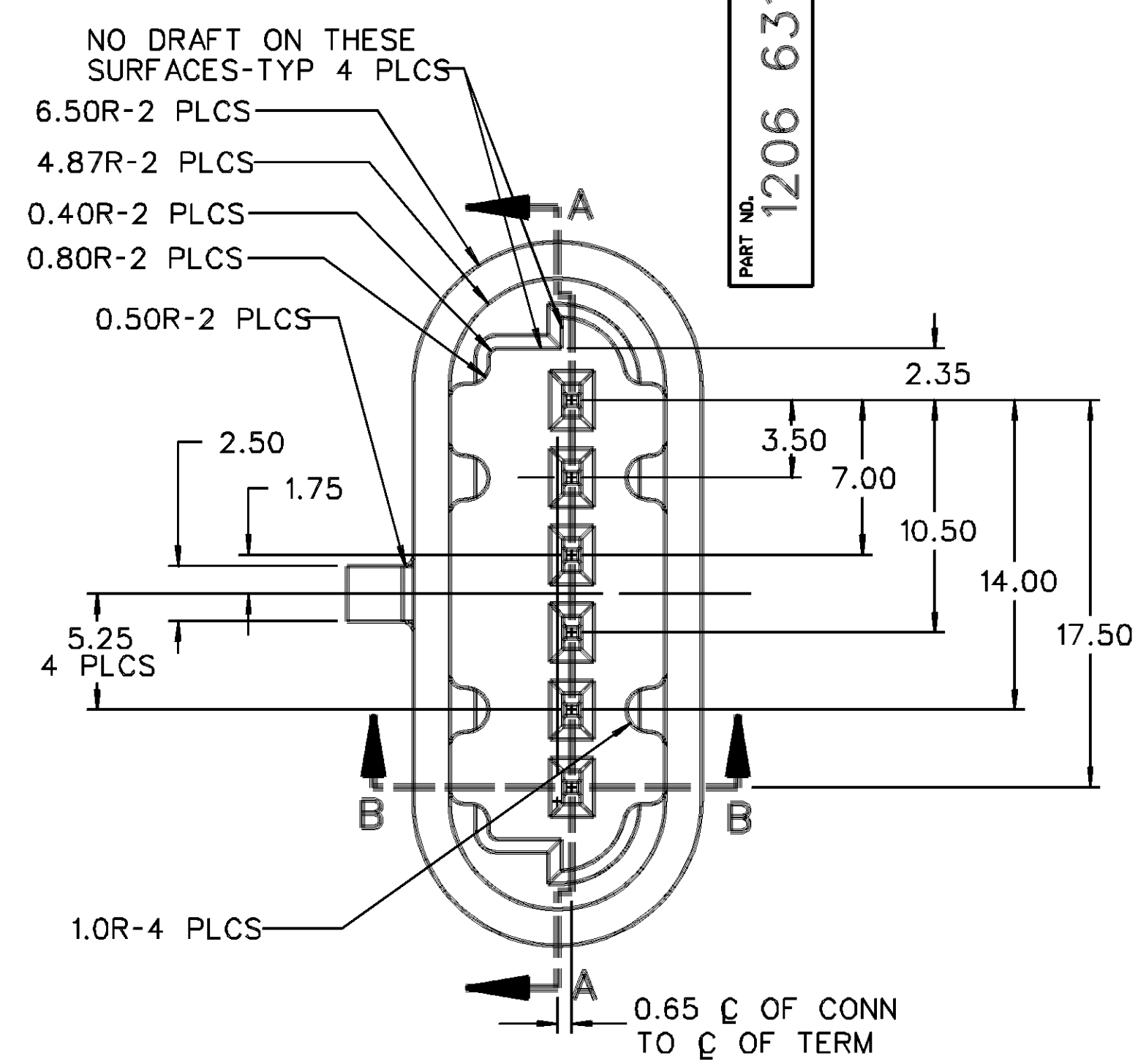
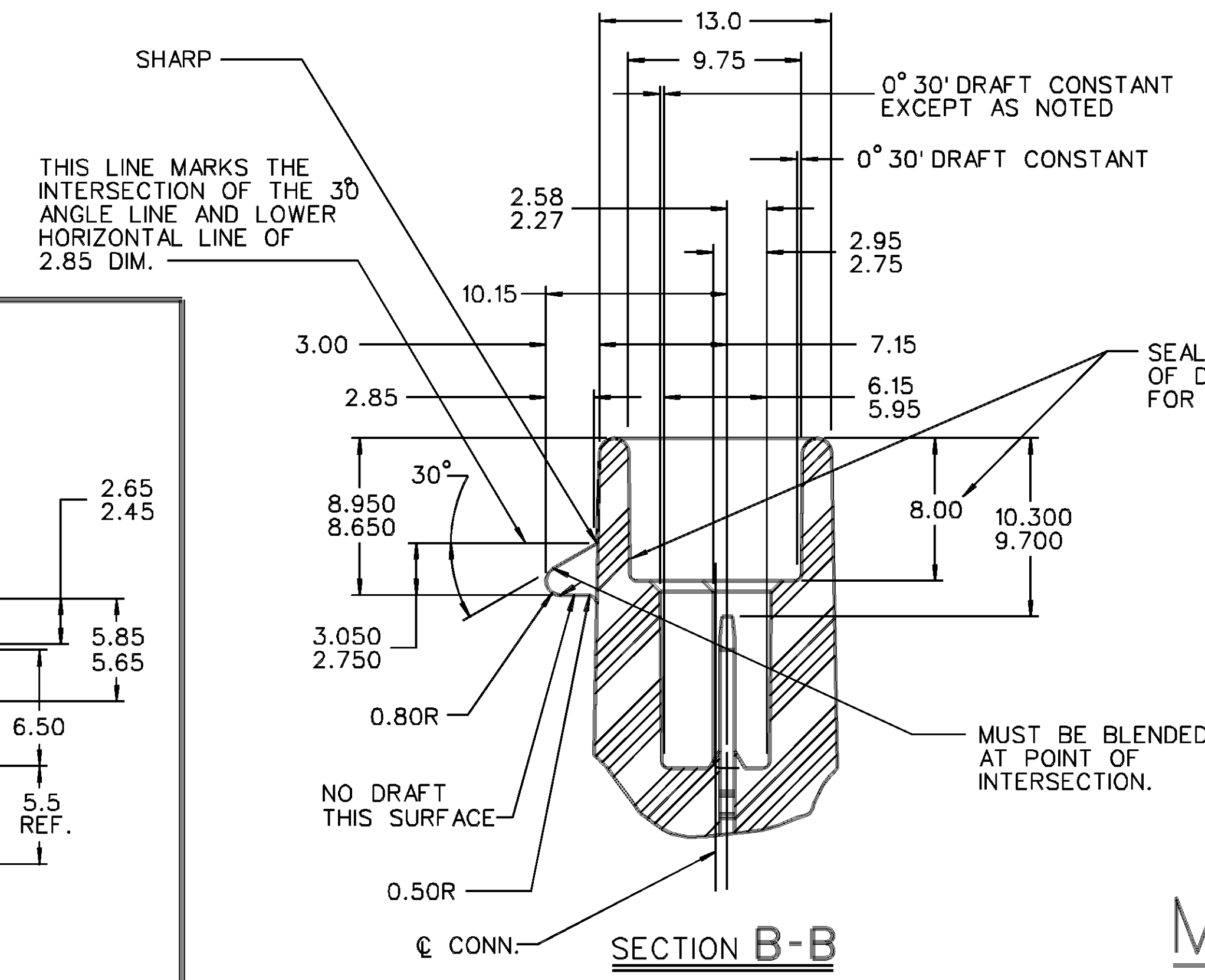


PART NO. 1206 6317



DATE	SYM	REVISION RECORD	AUTHORITY	DR	CK
02DE86	A	PART NO. WAS PE008367 AND RELEASED	860005	EM	FH
15SE87	-	ADDED NOTE *6	115653	EM	

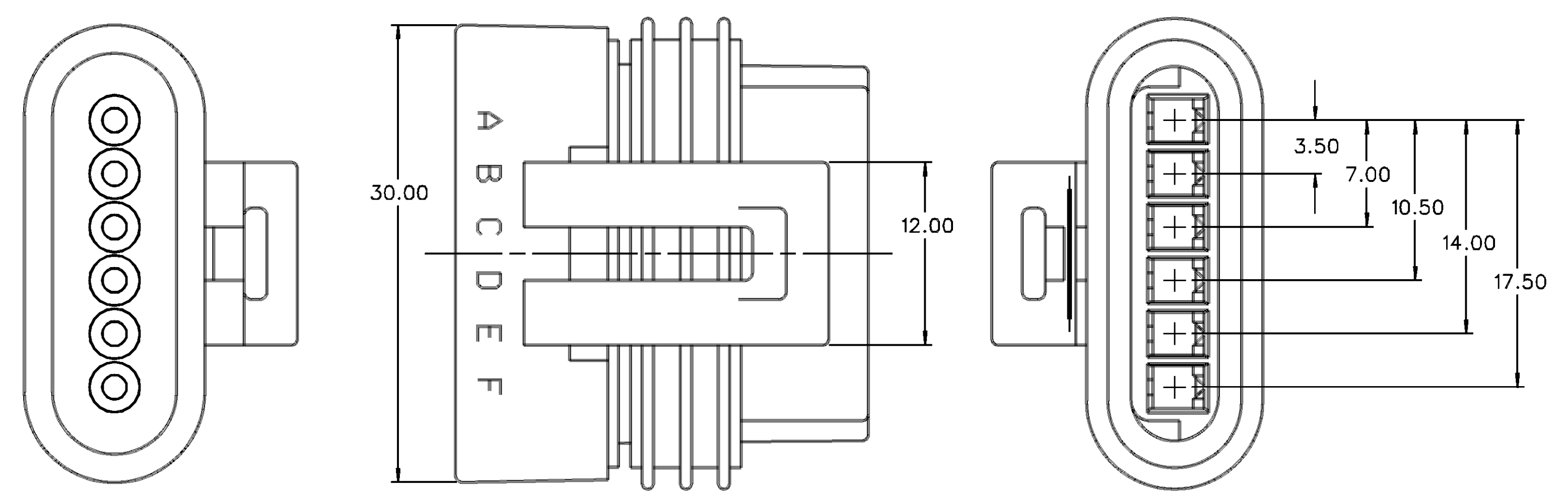
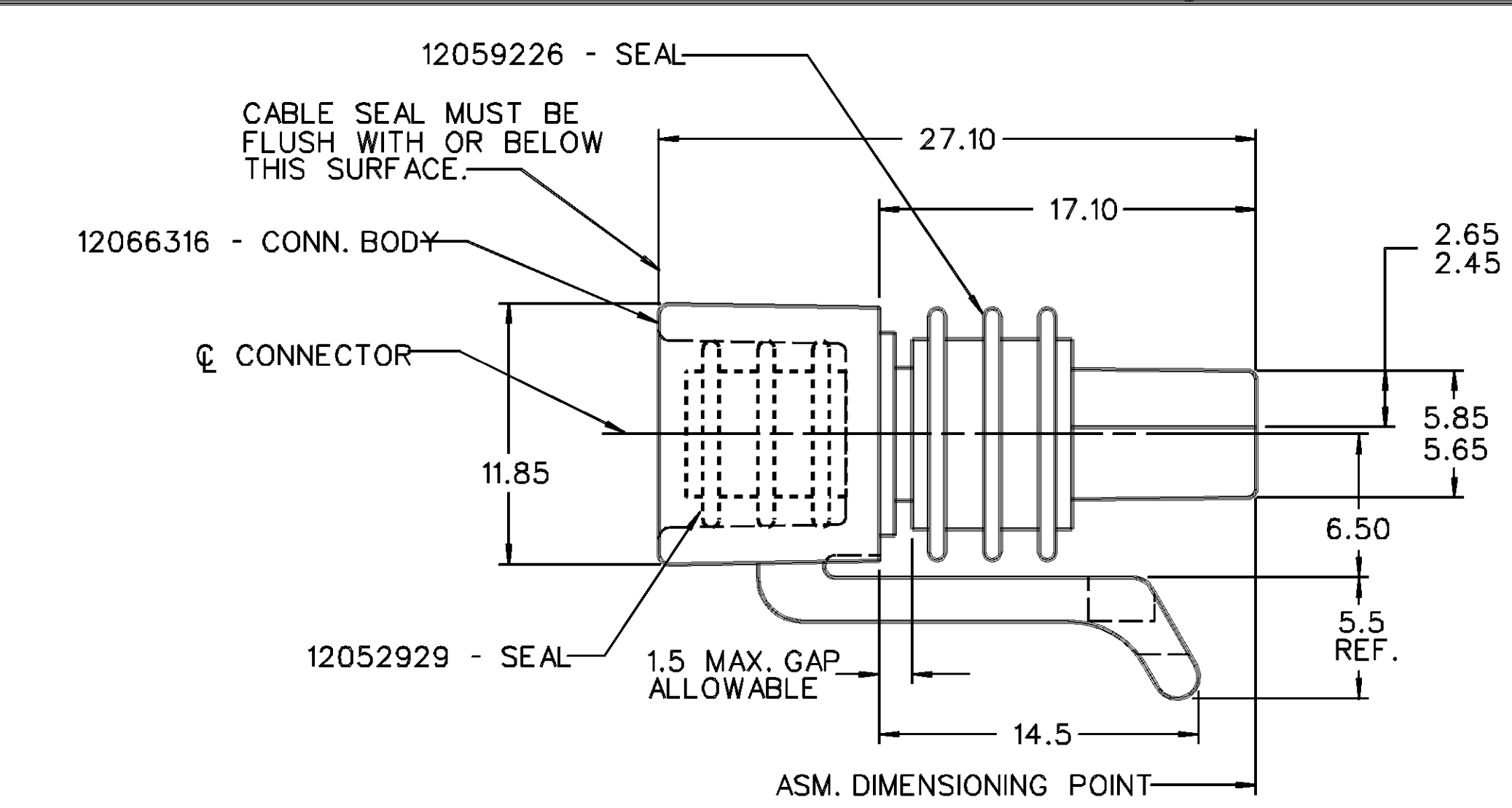
PACKARD ELECTRIC DIVISION  
GENERAL MOTORS CORPORATION



- NOTES**
1. 1° DRAFT ON ALL OUTSIDE SURFACES, UNLESS OTHERWISE SPECIFIED.
  2. DIMENSIONS ARE TO FACE OF VIEW SHOWN, UNLESS OTHERWISE SPECIFIED.
  3. ALL RADII 0.40 UNLESS OTHERWISE SPECIFIED.
  4. TERMINAL RETENTION FORCE 89.0 N MINIMUM.

RECOMMENDED MATERIAL— GLASS REINFORCED NYLON OR POLYESTER.

**MATING CONNECTOR INFORMATION**



- NOTES**
1. CAVITIES TO ACCEPT 12047680 TERMINAL OR EQUIVALENT.
  2. WHEN PARTS ARE SHIPPED, THEY MUST BE PACKED IN PLASTIC BAGS OR SHIPPING CONTAINERS MUST BE LINED WITH PLASTIC LINERS. BAGS OR LINERS MUST BE SEALED TO AVOID ENTRY OF FOREIGN MATTER.
  3. CONNECTOR TO ACCEPT 12059226 CONNECTOR SEAL OR EQUIVALENT.
  4. CONNECTOR TO ACCEPT 12052929 CABLE SEAL OR EQUIVALENT.
  5. MATING CONNECTOR ASM 12064915 OR EQUIVALENT.
  6. SEALING CODE 3.

PIE D / MICROSTATION		FILE SPEC: ****USER**** DGN#SPECIFICATION***** *****SYTIME*****
THIRD ANGLE PROJECTION		<b>METRIC</b> DIMENSIONS ARE IN MILLIMETERS UNLESS OTHERWISE SPECIFIED.
CODE NO. 6900	TOLERANCE UNLESS OTHERWISE SPECIFIED DECIMAL: ONE PLACE ± 0.3 TWO PLACE ± 0.15	
DWG. DATE 18SE86	SCALE 4:1	DR. <i>E. Johnson</i> 18SE86
EST. NO.	CK.	DATE
REFERENCE NO. 12065143	APPR.	DATE
MATERIAL SPEC. SEE DWG.		
NAME ASM. CONN 6F M/P 150 P2S		
PART NO. 1206 6317	SIZE	D