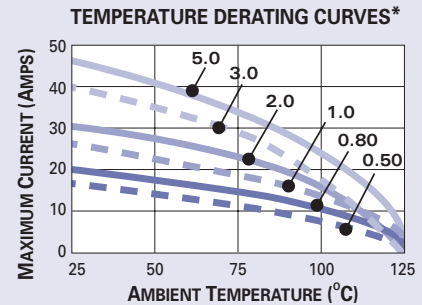
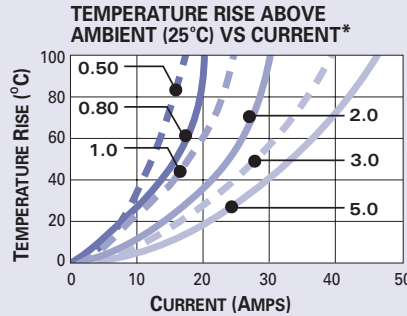




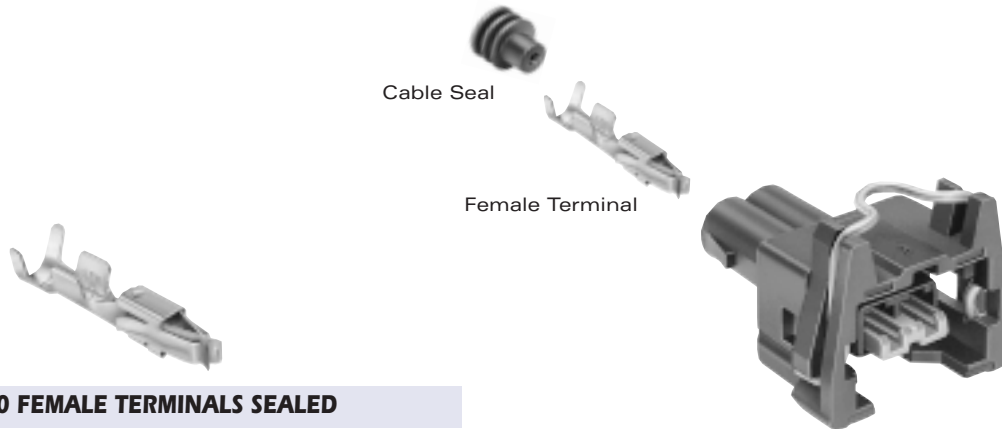
Sealed System Application Information

CABLE RANGE (mm²): 0.5-2.5
 CURRENT RANGE (AMPS): 19
 TEMP RANGE °C: -40 to 125
 RESISTANCE: <10mΩ@20mV
 VOLTAGE DROP: <4.0mV/amp
 CENTERLINE SPACING (mm): 5.0
 BLADE WIDTH (mm): 2.8

280 SERIES TERMINALS - Tin Plated



*The test data are based on single circuits in free space and were generated using a "Lumped Resistance" model. This model does not account for all of the variables that would be present in an actual application. For actual product performance, contact your regional support representative at the number listed below.



DS 280 FEMALE TERMINALS SEALED

Part #	Cable Range (mm ²)	Material	Plating
12157739	1.0-0.50	Bronze	Tin
12157740	2.5-1.0	Bronze	Tin
12198102	1.0-0.50	Bronze	Tin
12198103	2.5-1.0	Bronze	Tin



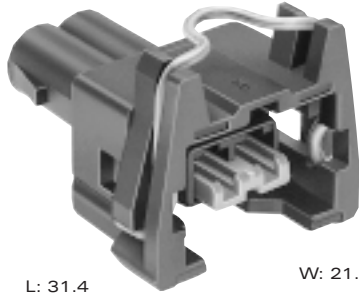
DS 280 CABLE SEALS

Reel Part #	Loose Part #	Cable Diameter	Material	Color
12015360	10720851	4.30-3.45	Silicone	Blue
12015359	12010293	3.49-2.81	Silicone	Lt. Gray
12015284	12015323	2.85-2.03	Silicone	Green
12041352	12041351	2.42-2.03	Silicone	Tan
12089444	12089679	2.15-1.60	Silicone	Purple
12034365	12015899	1.70-1.29	Silicone	Dk. Red

DS FEMALE CONNECTOR ASSEMBLIES SEALED

# Cavities	Connector Assembly	Color	Material
2	12196895	Black	PA66 30% GF
2	15364309	Black	PA66 30% GF
3	12158456	Black	PA66 30% GF
3	15364318	Yellow	PA66 30% GF
5	12158457	Black	PA66 30% GF

<http://delphi.com/products/connect>

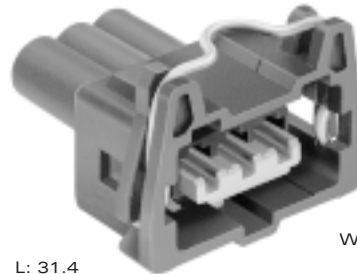


A

H: 24.0

L: 31.4

W: 21.0



D

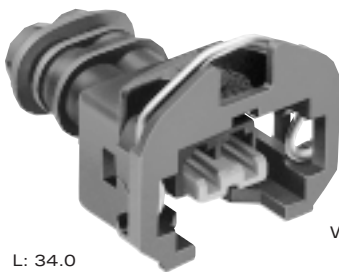
H: 29.0

L: 31.4

W: 21.0

A PART NO: 12196895
 DESCRIPTION: Connector Assembly 2F
 SIZE: 31.4L x 24.0H x 21.0W
 COLOR: Black
 MATERIAL: PA66 30% GF
 TERMINALS: See Page 252
 SEALS: See Page 252
 TYPICAL APP: Injector

D PART NO: 12158456
 DESCRIPTION: Connector Assembly 3F
 SIZE: 31.4L x 29.0H x 21.0W
 COLOR: Black
 MATERIAL: PA66 30% GF
 TERMINALS: See Page 252
 SEALS: See Page 252
 TYPICAL APP: Fuel Pump

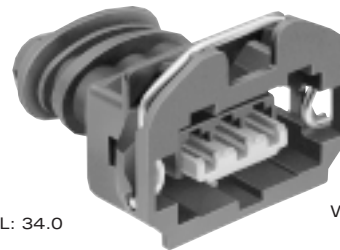


B

H: 27.0

L: 34.0

W: 22.4



E

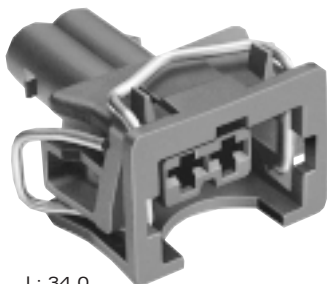
H: 32.0

L: 34.0

W: 23.4

B PART NO: 15364309
 DESCRIPTION: Connector Assembly 2F
 SIZE: 34.0L x 27.0H x 22.4W
 COLOR: Black
 MATERIAL: PA66 30% GF
 TERMINALS: See Page 252
 SEALS: See Page 252
 TYPICAL APP: Injector

E PART NO: 15364318
 DESCRIPTION: Connector Assembly 3F
 SIZE: 34.0L x 32.0H x 23.4W
 COLOR: Black
 MATERIAL: PA66 30% GF
 TERMINALS: See Page 252
 SEALS: See Page 252
 TYPICAL APP: Fuel Pump

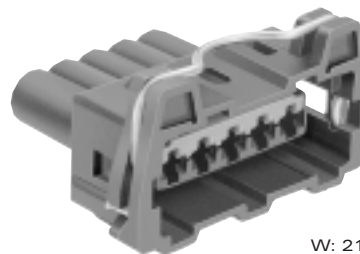


C

H: 18.8

L: 34.0

W: 31.0



F

H: 30.0

L: 31.4

W: 21.0

C PART NO: 12084126
 DESCRIPTION: Connector Assembly 2F
 SIZE: 34.0L x 18.8H x 31.0W
 COLOR: Black
 MATERIAL: PA66 30% GF
 TERMINALS: See Page 252
 TYPICAL APP: Injector

F PART NO: 12158457
 DESCRIPTION: Connector Assembly 5F
 SIZE: 31.4L x 39.0H x 21.0W
 COLOR: Black
 MATERIAL: PA66 30% GF
 TERMINALS: See Page 252
 SEALS: See Page 252
 TYPICAL APP: Ignition System