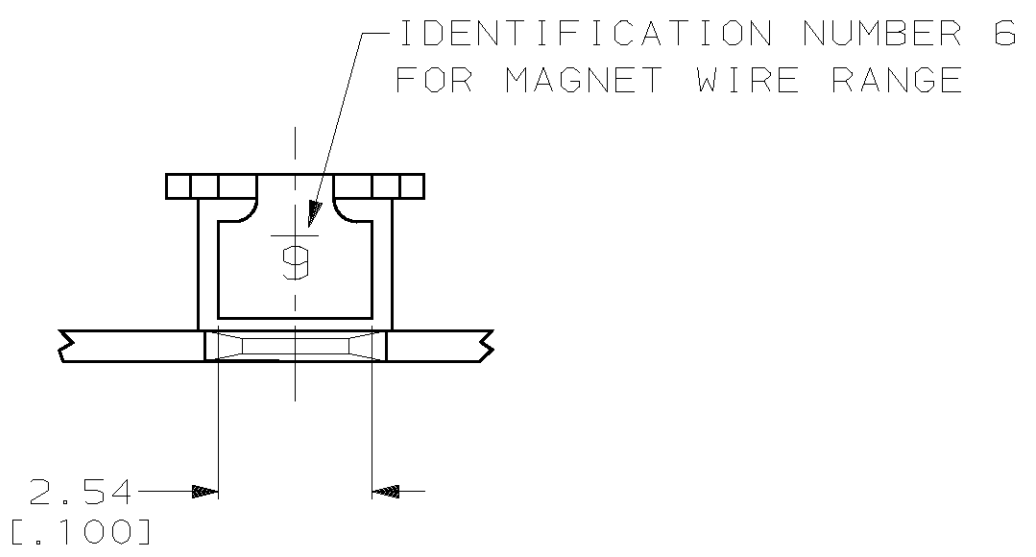
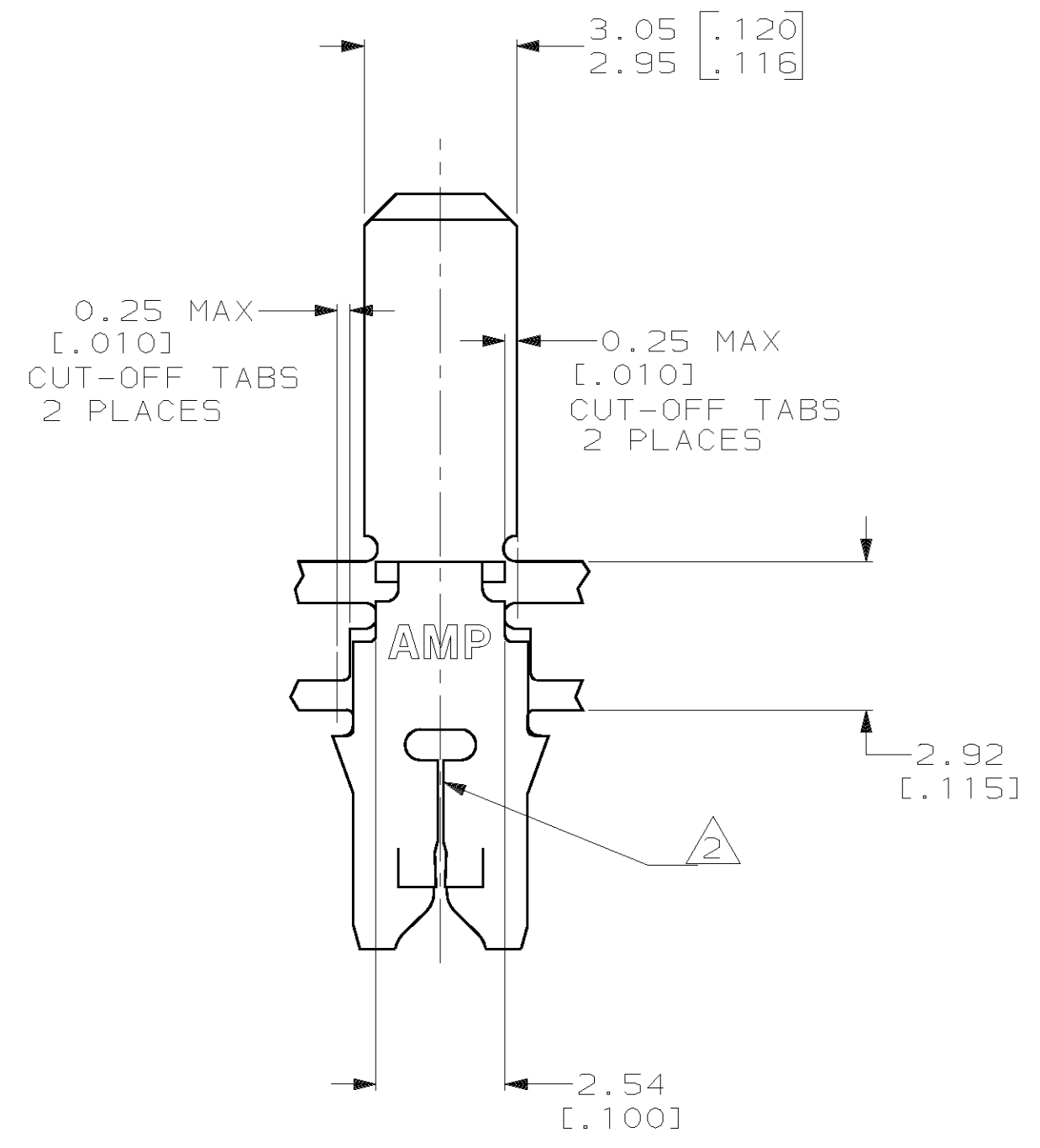
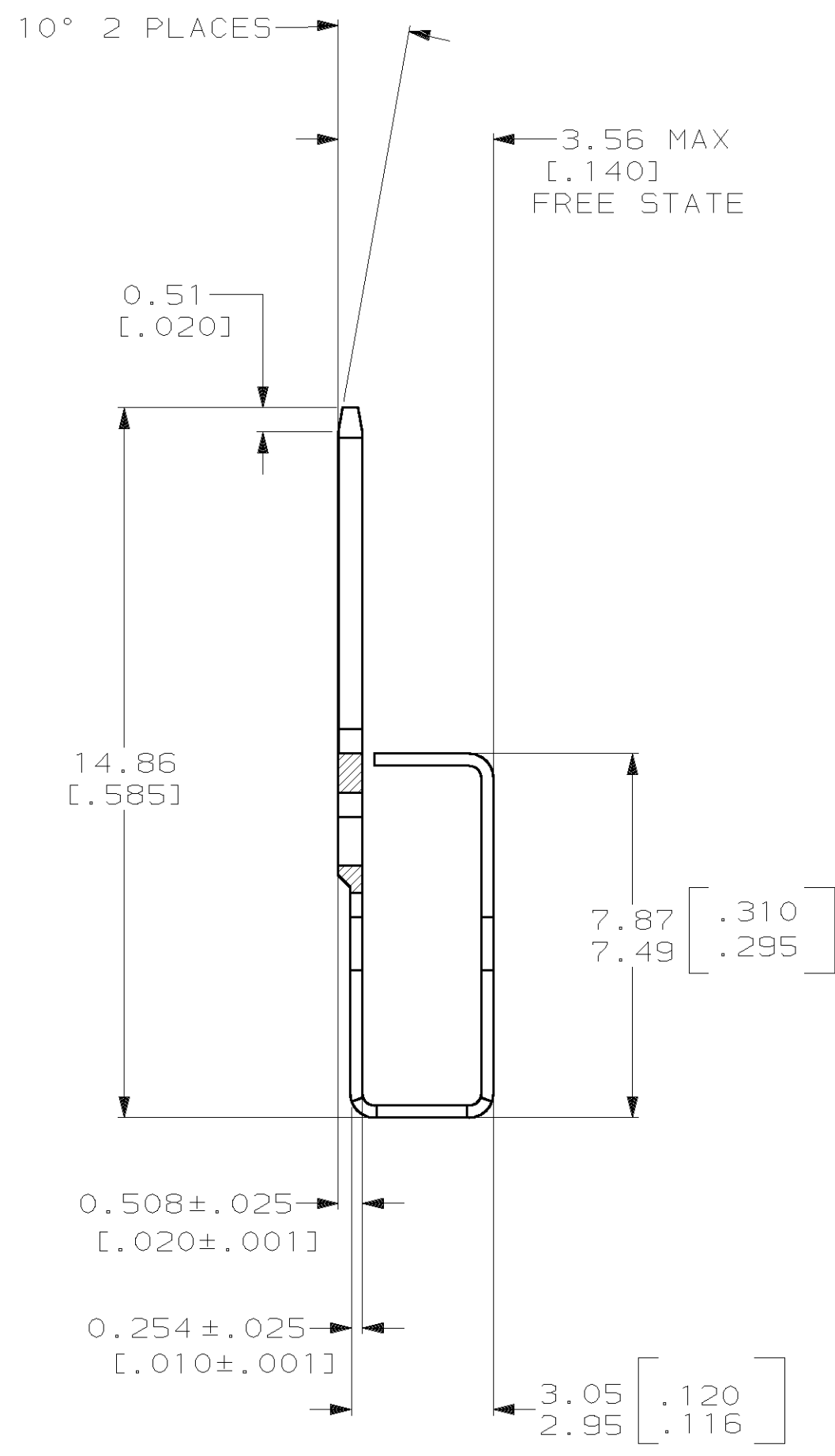
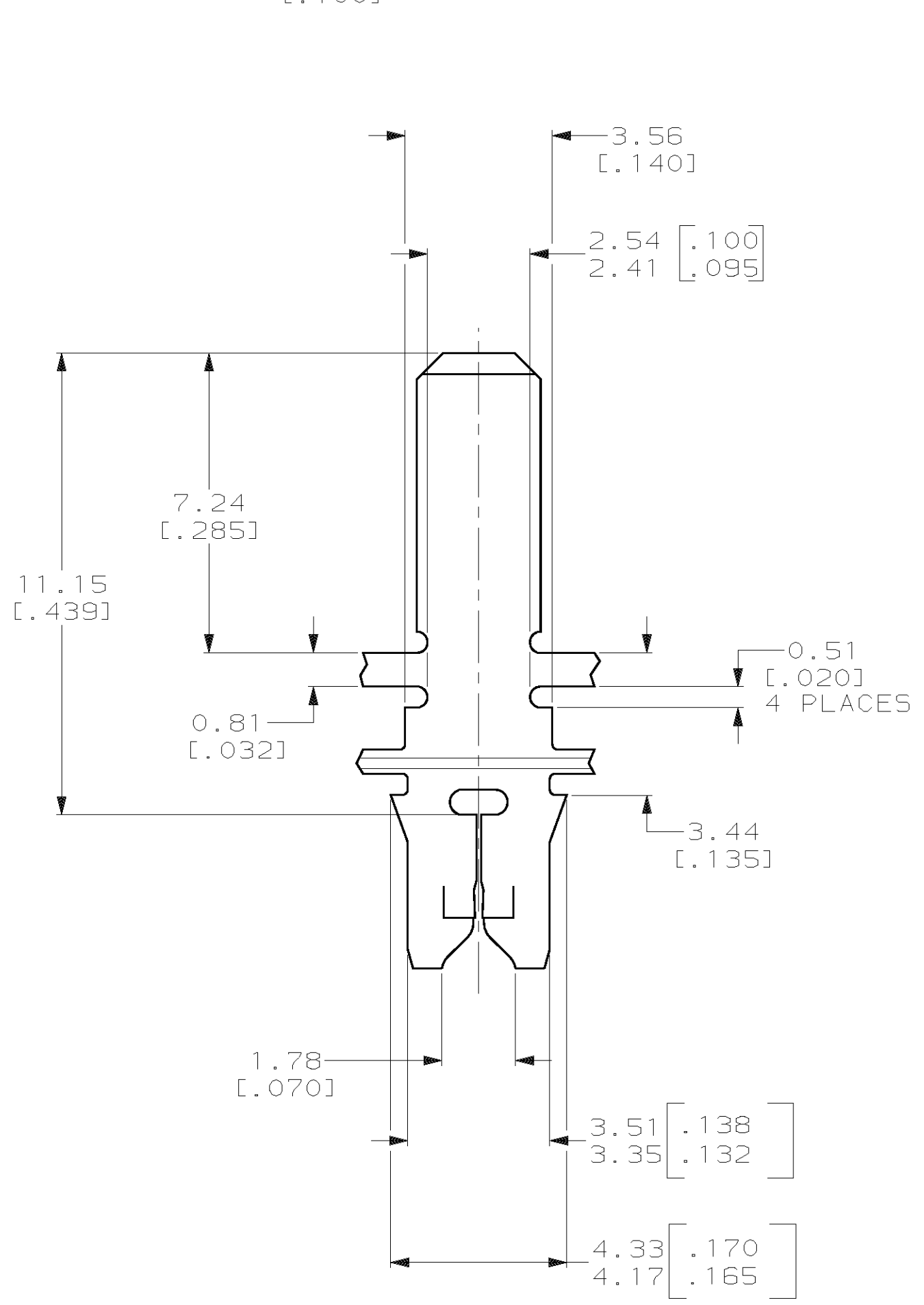


THIS DRAWING IS UNPUBLISHED. RELEASED FOR PUBLICATION  
 (C) COPYRIGHT 19 BY AMP INCORPORATED. ALL RIGHTS RESERVED.

LOC	DIST	REVISIONS			
P	LTR	DESCRIPTION	DATE	DWN	APVD
AF	50	0	PROPOSED	01NOV01	MF KR



- 1 CONTINUOUS STRIP ON REELS WITH TERMINALS LOCATED ON 5.59±0.08 [.220±.003] CENTERS
- 2 SLOT TERMINATES EITHER A SINGLE OR DOUBLE MAGNET WIRE OF THE SAME TYPE AND SIZE, COPPER RANGE: 0.25-0.32mm [#30-#28] AWG.
- 3 PRELIMINARY - NOT FOR PRODUCTION.



3 1217745-1  
PART NUMBER

THIS DRAWING IS A CONTROLLED DOCUMENT.		DWN MICHAEL S. FEHER 01NOV2001	AMP Incorporated Harrisburg, PA 17105-3608	
DIMENSIONS: mm [INCHES]		CHK KURT A. RANDOLPH 01NOV2001	NAME KURT A. RANDOLPH 01NOV2001	
TOLERANCES UNLESS OTHERWISE SPECIFIED:		APVD KURT A. RANDOLPH 01NOV2001	PRODUCT SPEC 108-2012	
0 PLC ±	1 PLC ±	APPLICATION SPEC 114-2046	SIZE A2	CAGE CODE 00779
2 PLC ±0.25 [.010]	3 PLC ±	WEIGHT -	DRAWING NO 1217745	RESTRICTED TO -
4 PLC ±	ANGLES ±	CUSTOMER DRAWING	SCALE 8:1	SHEET 1 OF 1
MATERIAL 4M PRE-MILLED BRASS	FINISH 0.002032 [.000080] MIN TIN PLATE	REV 0		