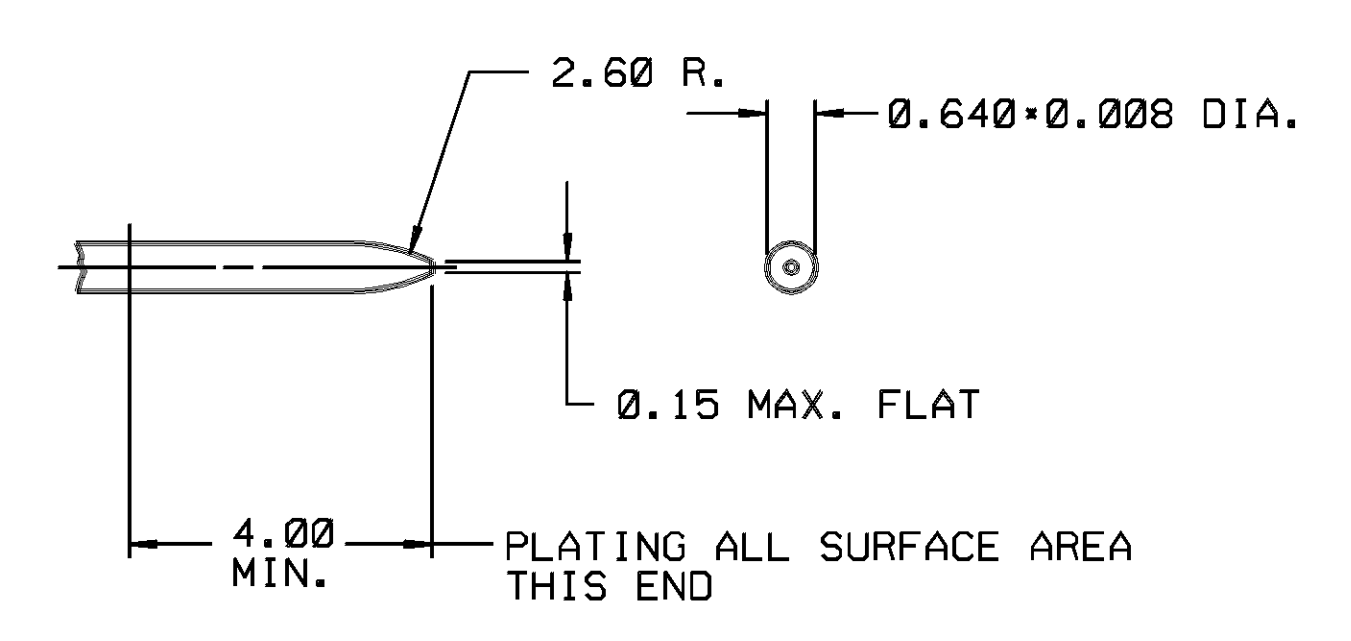


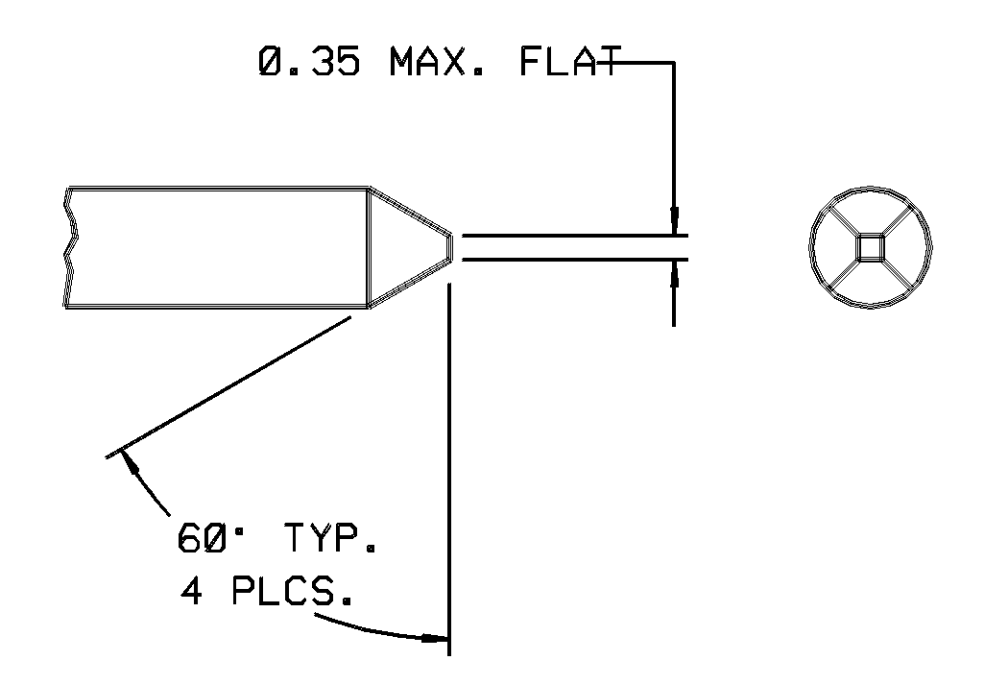
THIS DRAWING AND DESIGN HEREIN CONSTITUTES A PROPRIETARY DESIGN OF PACKARD ELECTRIC DIVISION AND IS NOT TO BE REPRODUCED OR REPRODUCED WITH-OUT AUTHORITY OF PACKARD ELECTRIC DIVISION.
DO NOT SCALE

PART NO. 1209 2405

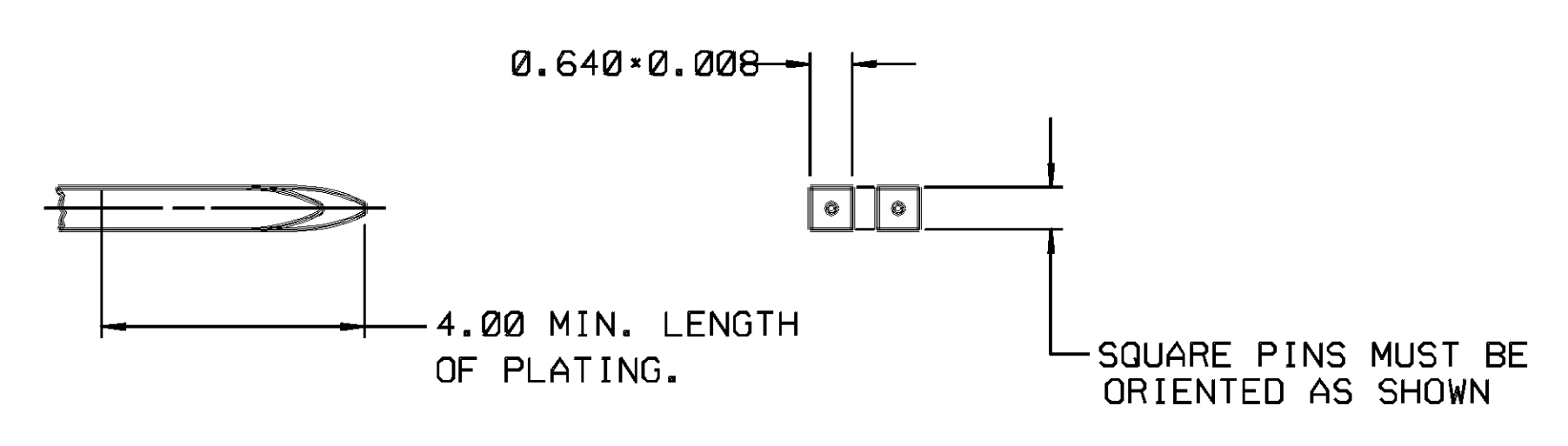
ZONE	DATE	SYM	REVISION RECORD	AUTHORITY	OR	CK
16JN88	A		DRAWING COMPLETE		TH	
19JL88	B		REVISED			
14FE89	C		REVISED			
20MR89			WAS PER 15024 & RELEASED	890005	DKS	DKS
14JN89	D		REVISED FEM CONN GRAPHICS TO AGREE WITH DETAIL			
				127699		



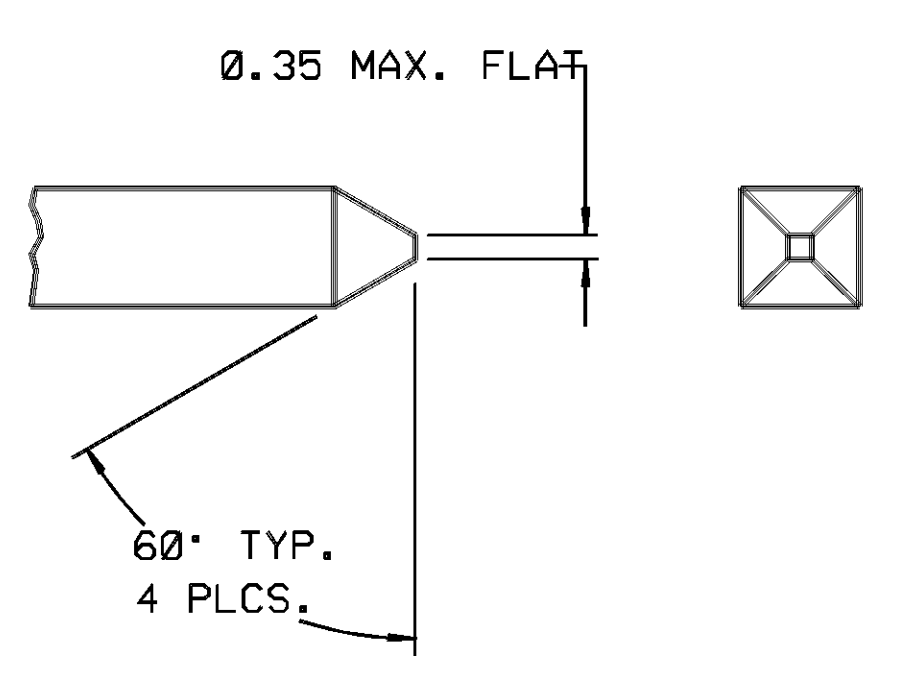
ROUND PIN (PREFERRED)
SCALE 10:1



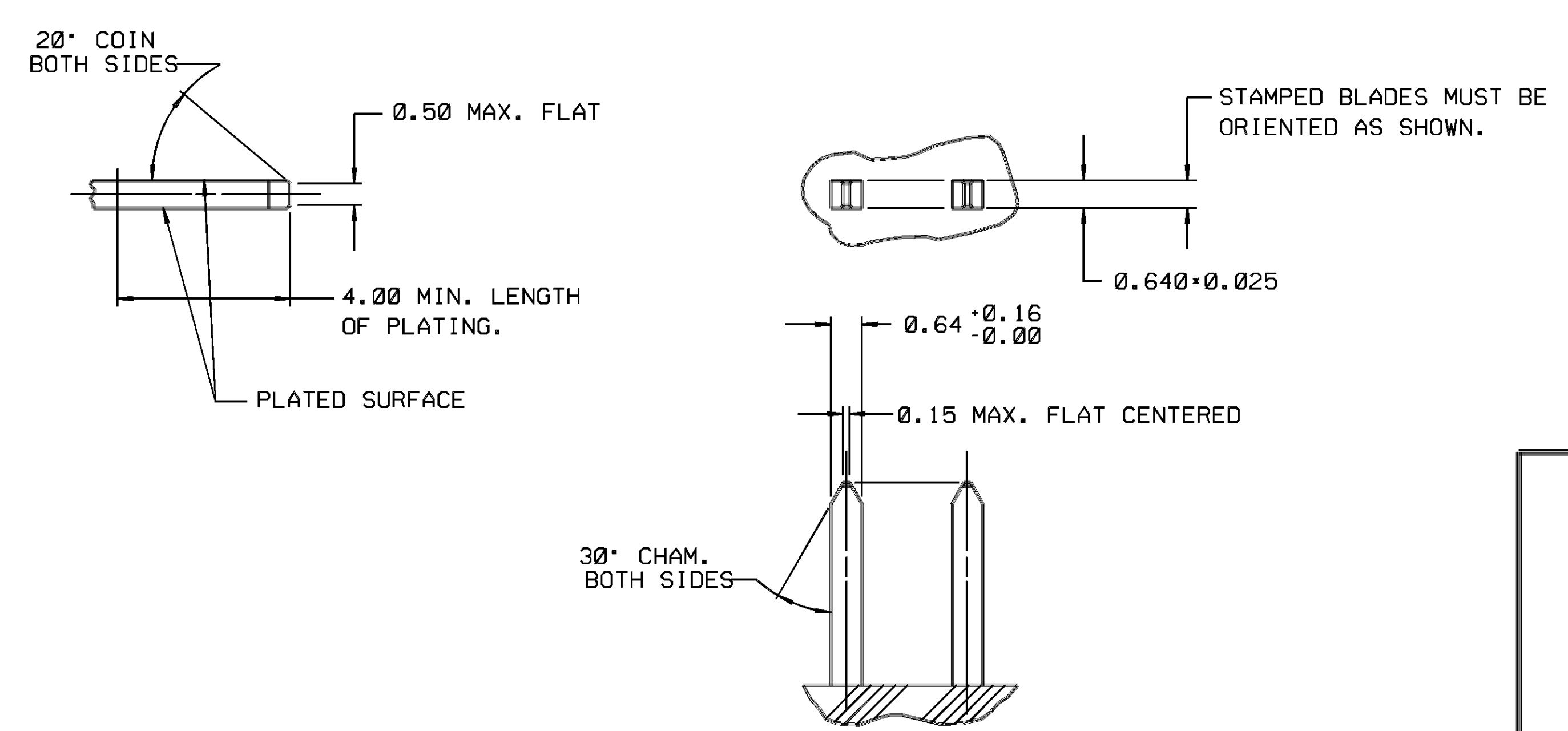
ROUND PIN (OPTIONAL)
SCALE 25:1



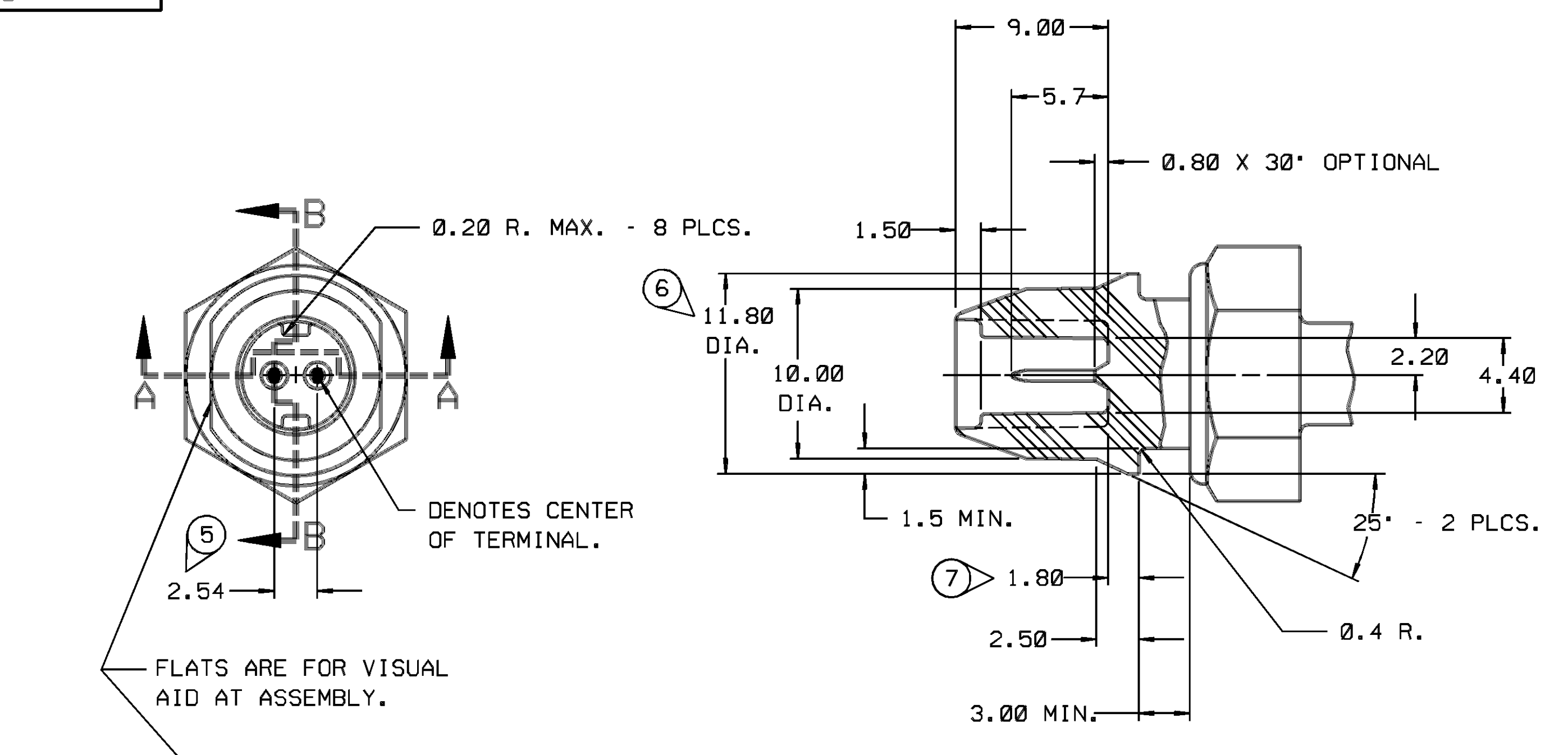
SQUARE PIN (PREFERRED)
SCALE 10:1



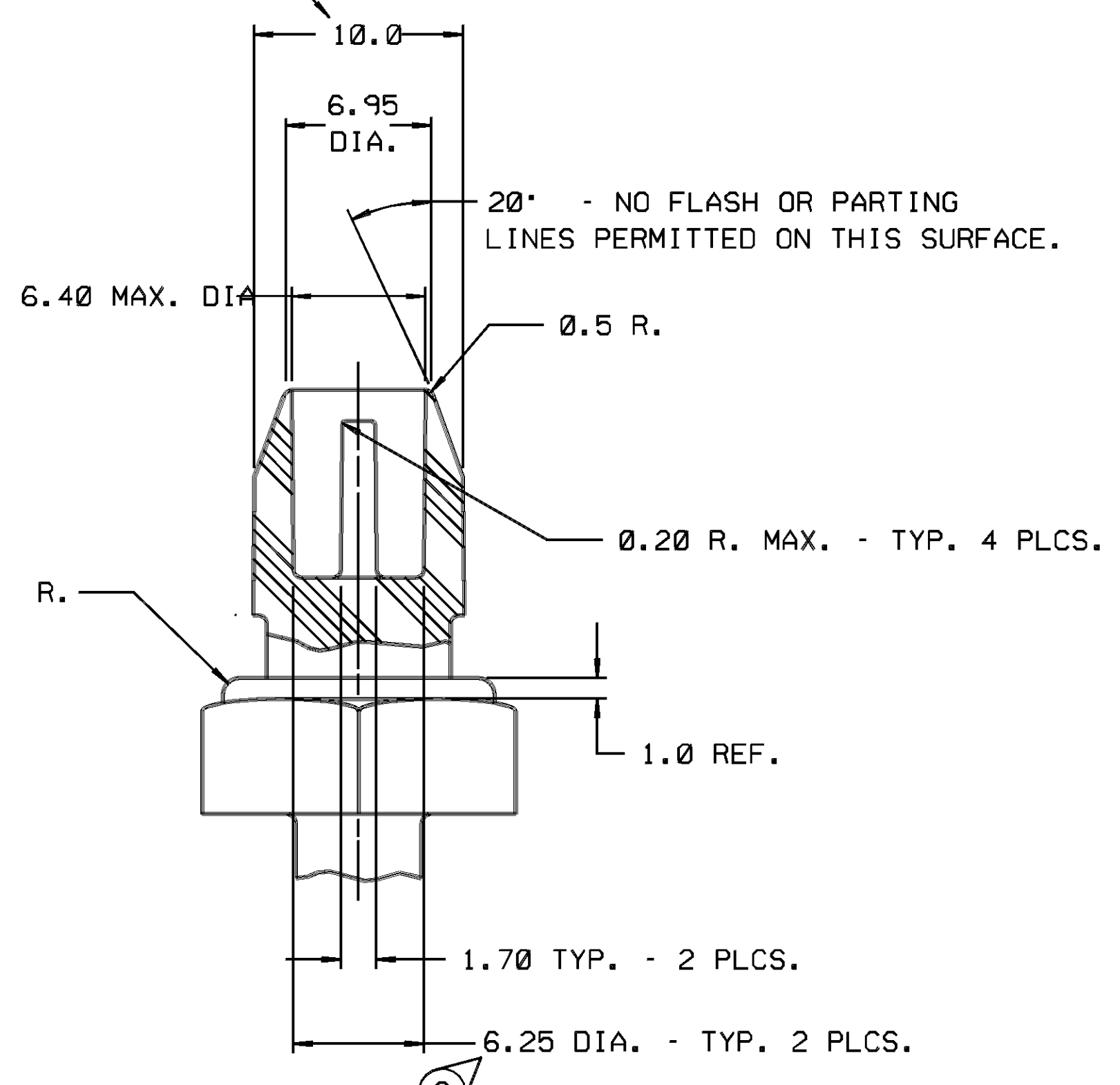
SQUARE PIN (OPTIONAL)
SCALE 25:1



STAMPED BLADE
SCALE 10:1



SECTION B-B



SECTION A-A

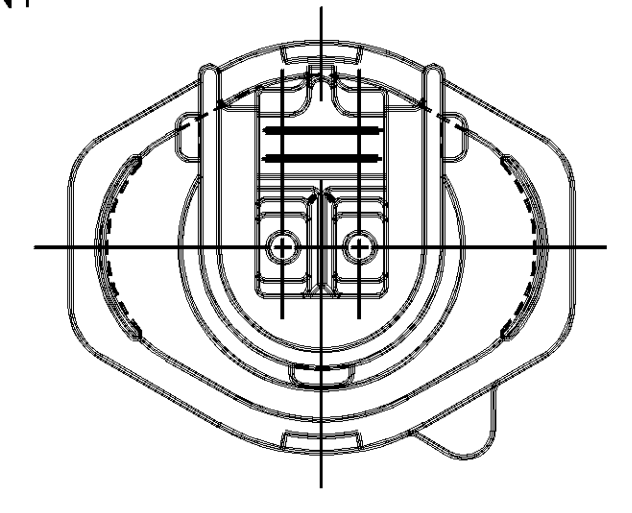
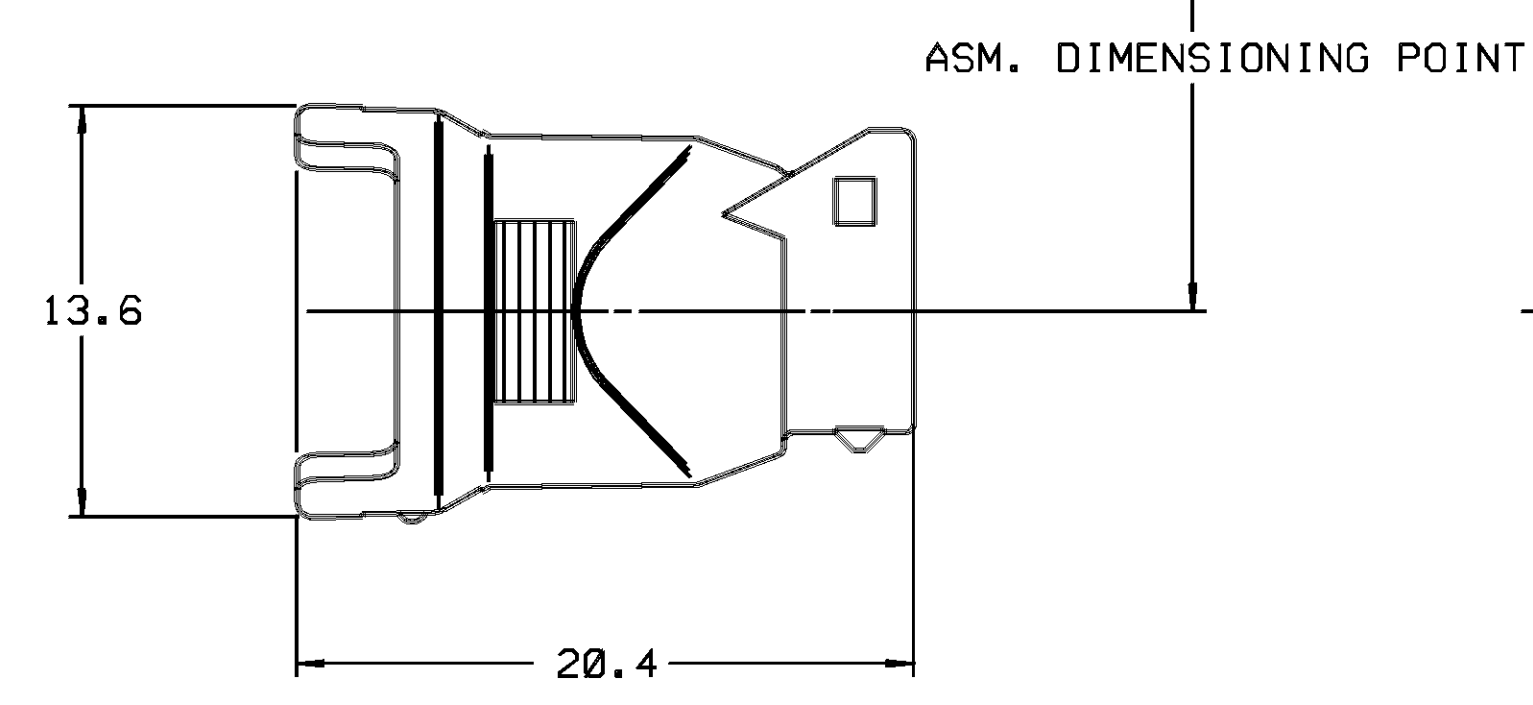
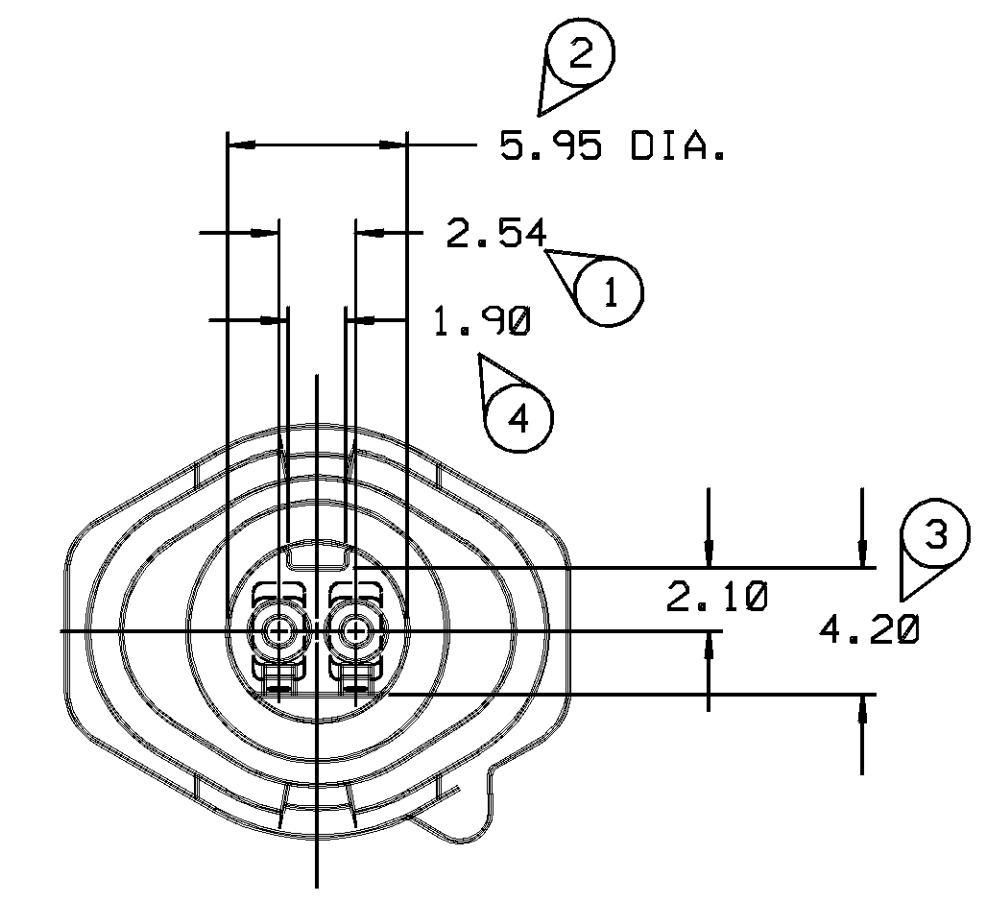
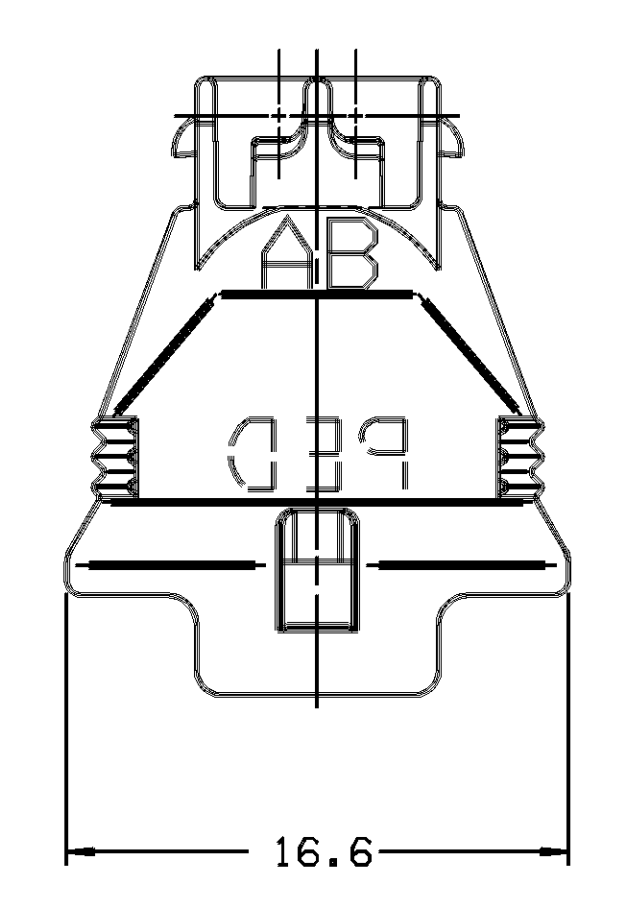
MATING CONNECTOR INFORMATION
SCALE - 4:1

- NOTES**
1. ALL RADII 0.40, UNLESS OTHERWISE SPECIFIED.
 2. DIMENSIONS ARE TO FACE OF VIEW SHOWN UNLESS OTHERWISE INDICATED.
 3. 0°30' DRAFT ON ALL INSIDE AND OUTSIDE SURFACES, UNLESS OTHERWISE SPECIFIED.

RECOMMENDED MATERIAL:
GLASS REINFORCED THERMOPLASTIC

MATING TERMINAL INFORMATION

- PLATING - CONTACT SURFACE**
1. FOR APPLICATION WHERE SERVICE TEMP. DOES NOT EXCEED 105°C.
TIN - MIL-T-10727B OR EQUIVALENT
TYPE I OR TYPE II, 0.0025 MM (.0001 IN.) THK.
MIN. BRIGHTENERS OPTIONAL
 2. FOR APPLICATIONS WHERE SERVICE TEMP. EXCEEDS 105°C.
GOLD - MIL-G-45204C OR EQUIVALENT
TYPE II-C CLASS 00
- PLATING - BASE MATERIAL (UNDERCOAT)**
1. COPPER - USE WITH TIN WHERE REQUIRED
MIL-C-14550B CLASS 3, 0.005 MM (.0002 IN.) THK.
OR EQUIVALENT
 2. NICKEL - USE WITH GOLD
00-N-290A LOW STRESS SULFIMATE
0.0013 MM (.00005 IN.) THK. OR EQUIVALENT
- TERMINAL - BASE MATERIAL OPTIONS**
1. BRASS - CDA 260, HARD
 2. PHOS. BRONZE - CDA 510, GRADE A, HARD



- NOTES**
1. CAVITIES TO ACCEPT 12092440 TERMINAL, OR EQUIVALENT.
 2. CONNECTOR TO ACCEPT 12092407 TPA COVER (TERMINAL POSITION ASSURANCE) OR EQUIVALENT.
 3. CONNECTOR TO ACCEPT 12092409 O-RING SEAL, OR EQUIVALENT.
 4. SEALING CODE *3*.
 5. WHEN PARTS ARE SHIPPED THEY MUST BE PACKED IN PLASTIC BAGS OR SHIPPING CONTAINERS MUST BE LINED WITH PLASTIC LINERS. BAGS OR LINERS MUST BE SEALED TO AVOID ENTRY OF FOREIGN MATTER.

GENERAL NOTE
"Ø" DENOTES DIMENSIONS AND CHARACTERISTICS THAT ARE IMPORTANT TO THE FUNCTION AND/OR PROCESSING OF THE PART. IT DOES NOT NECESSARILY INDICATE AN DIMENSION. THIS DRAWING HAS 8 SNOWCONES.

PART NO. 1209 2405

PART NO. 1209 2405

FILE SPEC	CONSPECIFICATION	ANGULAR ± °
PED / MICROGRAPH	*****	ANGULAR ± °
THIRD ANGLE PROJECTION	METRIC	DIMENSIONS ARE IN MILLIMETERS UNLESS OTHERWISE SPECIFIED.
CODE NO. 6900	TOLERANCE UNLESS OTHERWISE SPECIFIED	
DWG. DATE 10JN88	ONE PLACE ± 0.2	
SCALE NONE	TWO PLACE ± 0.10	
DR. T. HALL		
EST. NO.	DR. DAVID STEELE	DATE 20MR89
REFERENCE NO. 12092406 'R' SIZE	APPR. JOSEPH M. SENK	DATE 22MR89
MATERIAL SPEC.	APPR. JOHN A. YURTIN	DATE 22MR89
	NYLON 66 HS BLACK	
NAME	CONN 2F MIC/P 064	
PART NO.	1209 2405	SIZE E
	OUTLINE DRAWING	

PACKARD ELECTRIC DIVISION
GENERAL PURPOSE INFORMATION