

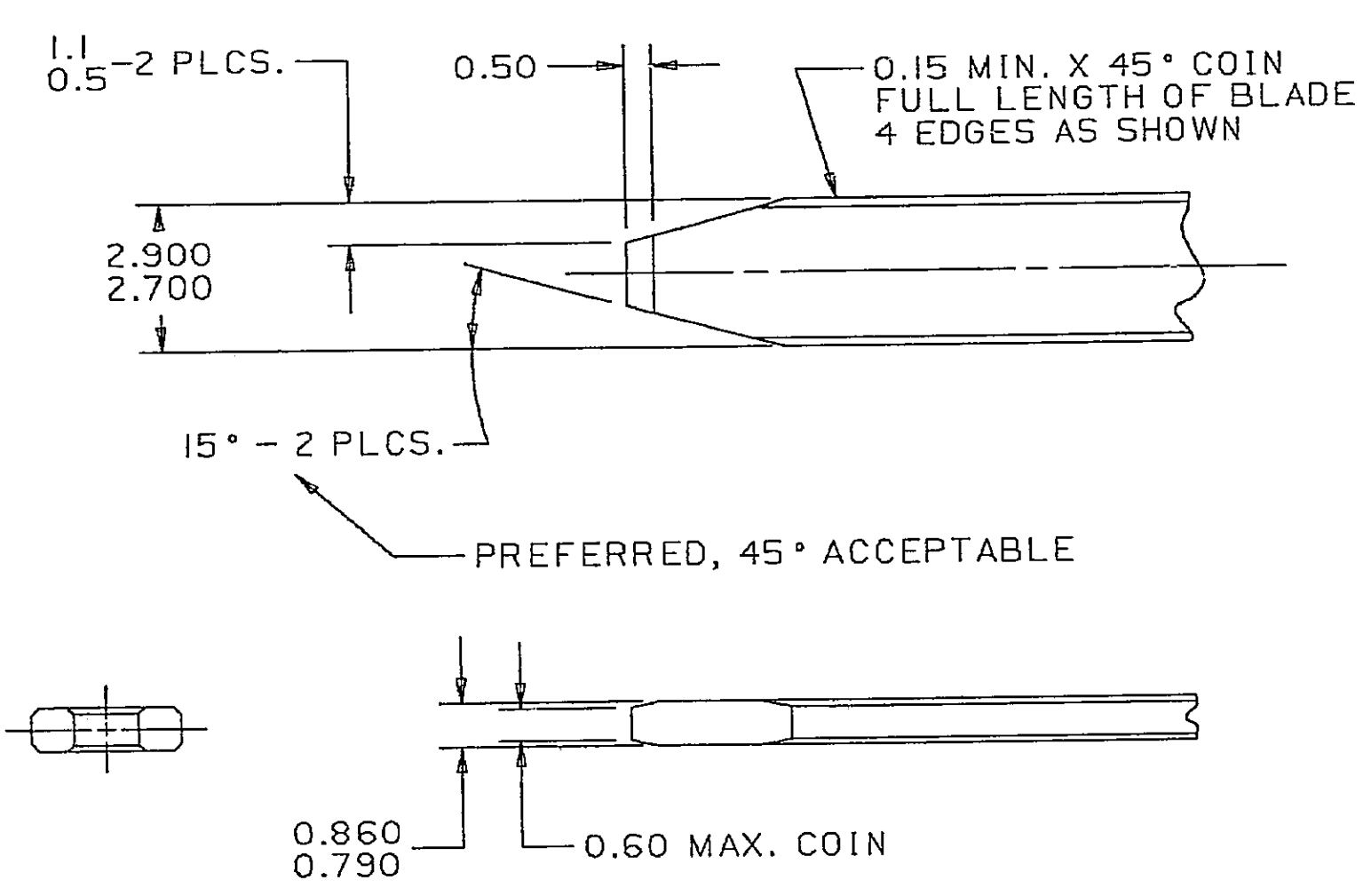
D

THIS DRAWING AND DESIGN HEREON CONSTITUTES A PROPRIETARY DESIGN OF PACKARD ELECTRIC DIVISION AND IS NOT TO BE DUPLICATED OR REPRODUCED WITHOUT AUTHORITY OF PACKARD ELECTRIC DIVISION.

DO NOT SCALE

PART NO. 1205 9573

PART NO. 1205 9573



### MATING TERMINAL INFORMATION

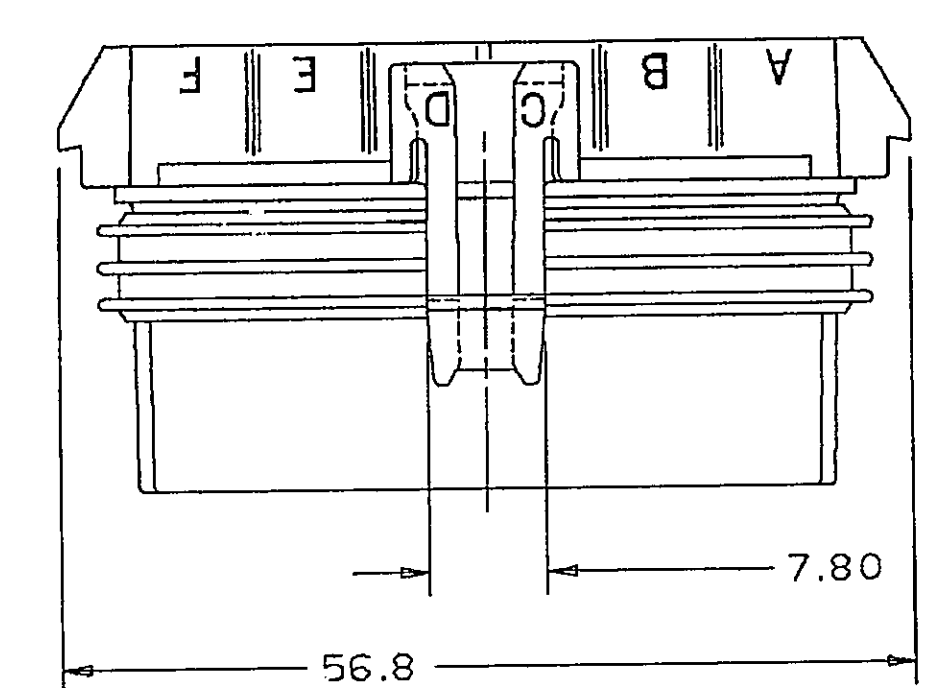
SCALE 8:1

RECOMMENDED MATERIAL: P-1546 (CA 210) BRASS-EXTRA SPRING TEMPER - TIN PLATED.

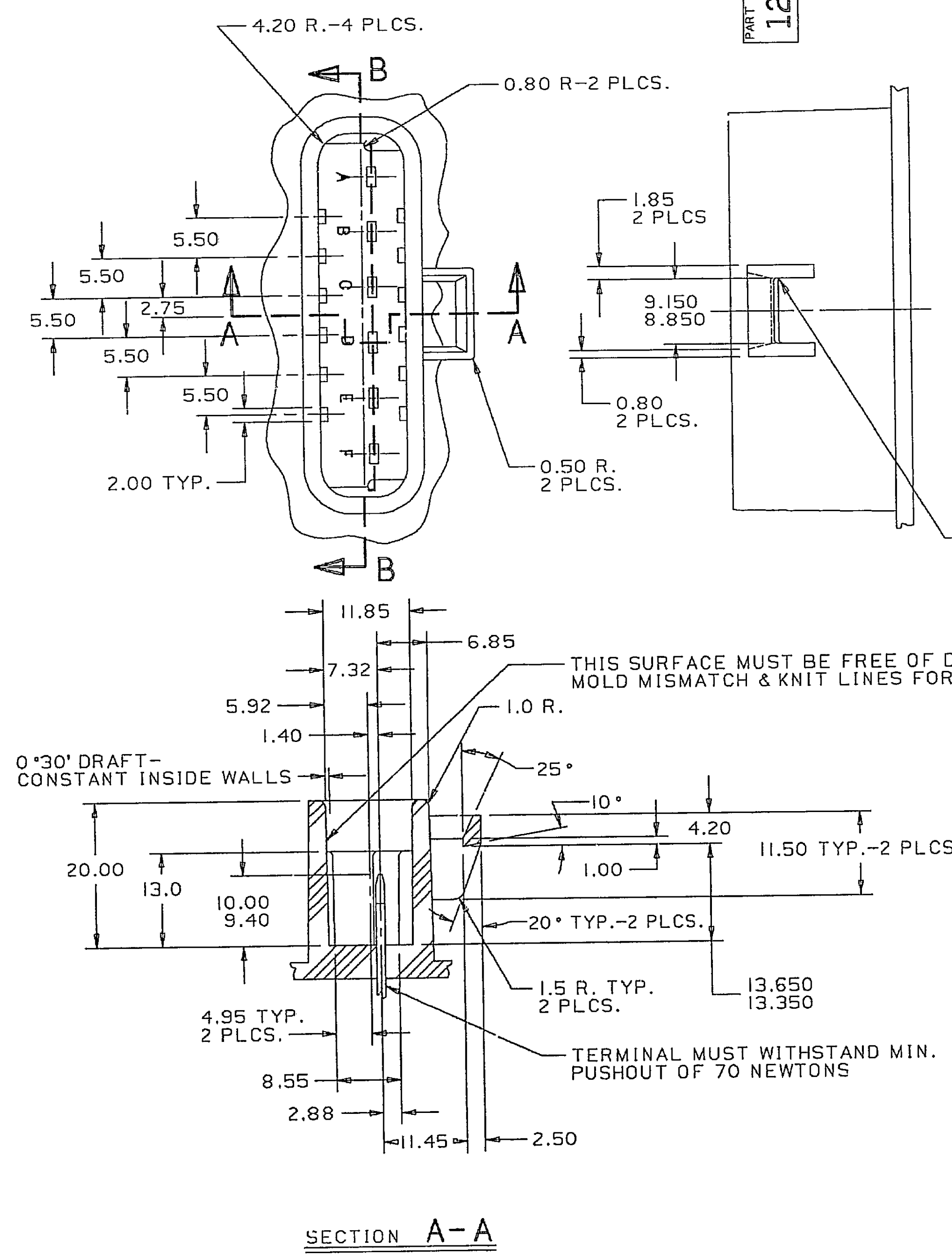
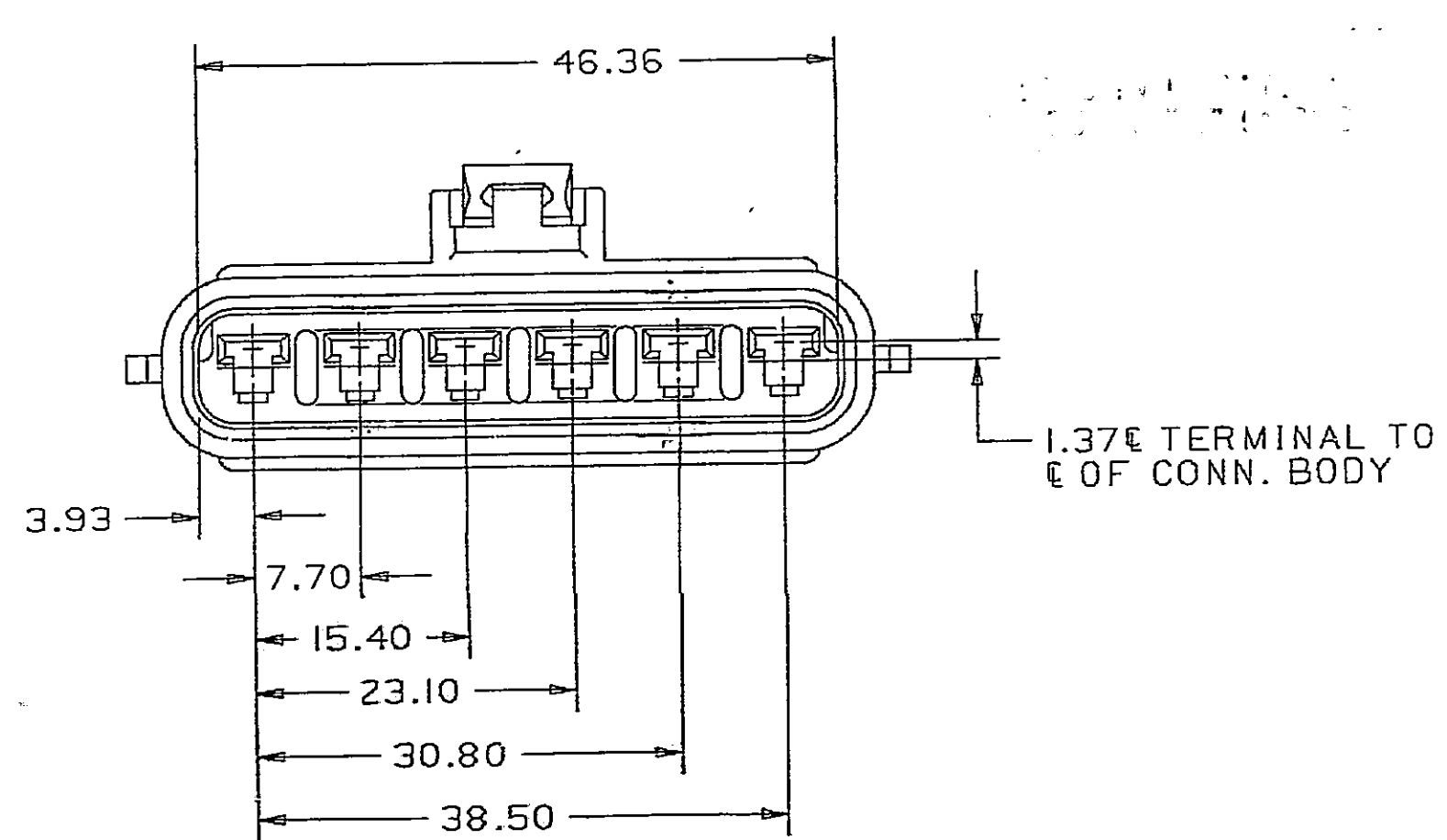
PLATING THICKNESS: 0.003 - 0.005 MM.

TENSILE STRENGTH: 430 - 480 MPA.

USE OF MATERIAL WITH CONDUCTIVITY  $\leq$  20% IACS AT 68 °F SHOULD BE APPROVED BY PACKARD ELECTRIC.



PT-A  
4SA

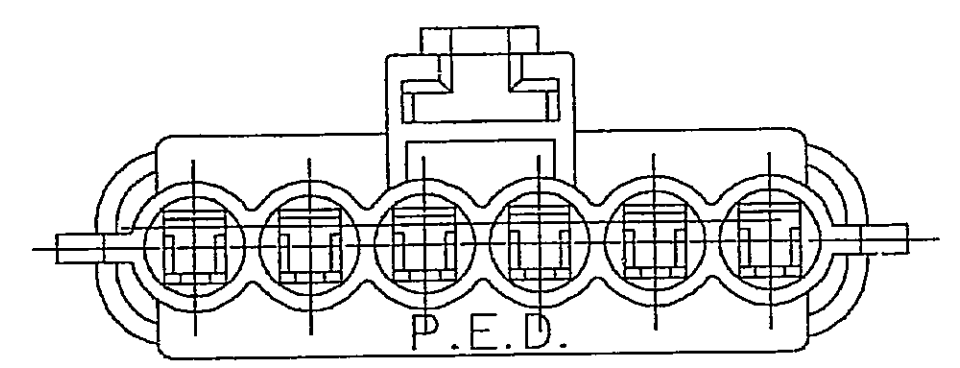
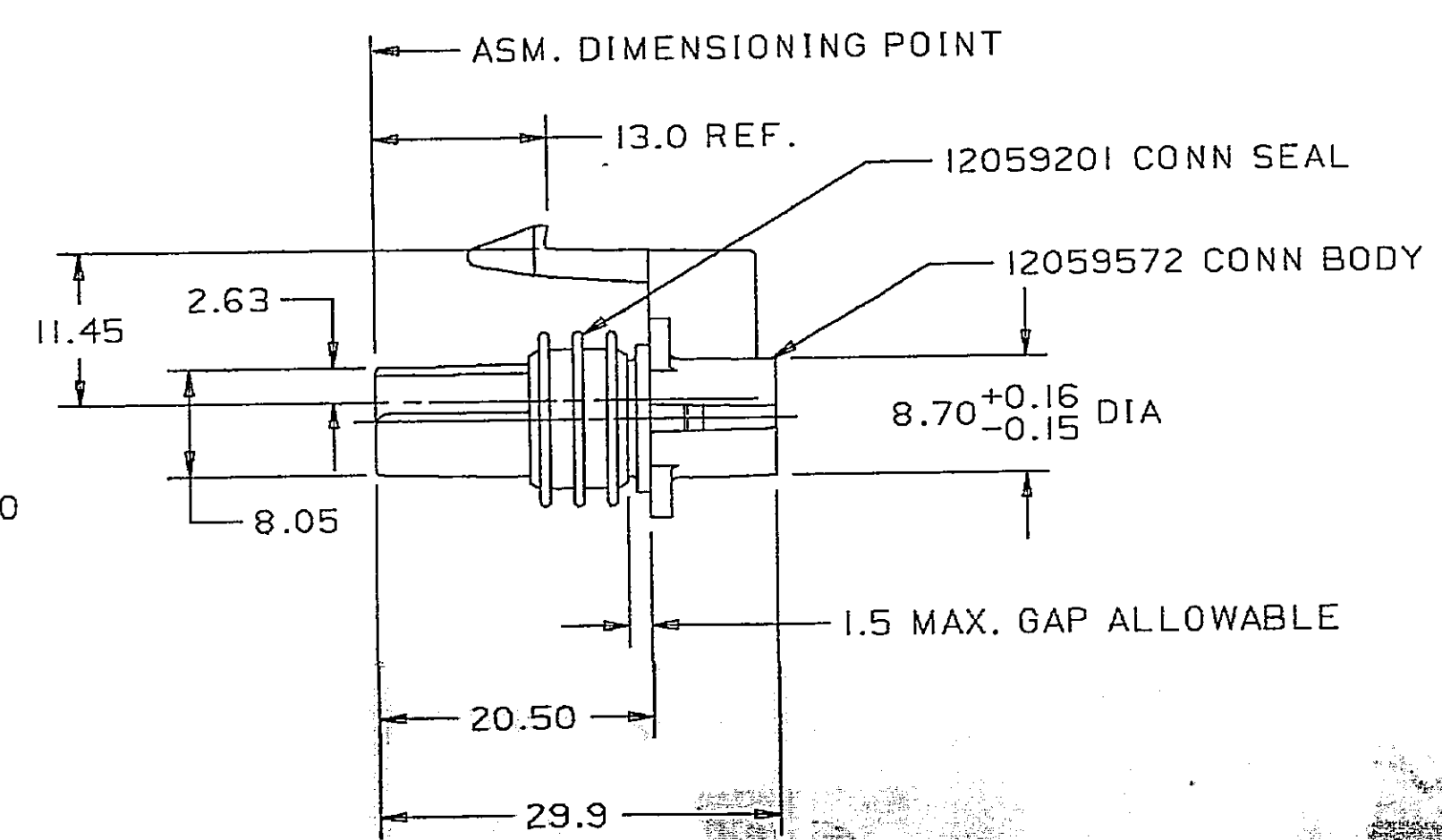


### MATING CONNECTOR INFORMATION

- NOTES — 1. 1° DRAFT ON ALL SURFACES UNLESS OTHERWISE SPECIFIED.
2. DIMENSIONS ARE TO FACE OF VIEW SHOWN UNLESS OTHERWISE SPECIFIED.
3. ALL RADII 0.40 UNLESS OTHERWISE SPECIFIED.

RECOMMENDED MATERIAL — GLASS FILLED POLYESTER OR TYPE 6 NYLON.

- NOTES — 1. CAVITIES TO ACCEPT I2077412 TERMINAL OR EQUIVALENT.
2. THIS ASSEMBLY TO ACCEPT I2059195 SECONDARY TERMINAL LOCK OR EQUIVALENT.
3. THIS ASSEMBLY TO ACCEPT C.P.A. LOCK I2052834.
4. THIS ASSEMBLY MATES TO DELCO PRODUCTS PART NO. 22062394 OR EQUIVALENT.
5. THIS ASSEMBLY TO ACCEPT CABLE SEAL I2015323 OR EQUIVALENT.
6. WHEN PARTS ARE SHIPPED, THEY MUST BE PACKED IN PLASTIC BAGS OR SHIPPING CONTAINERS MUST BE LINED WITH PLASTIC LINERS. BAGS OR LINERS MUST BE SEALED TO AVOID ENTRY OF FOREIGN MATTER.
7. SEALING CODE 3.



DATE	SYM	REVISION RECORD	AUTH	DR	CK
02DE85	A	CAVITY LETTERS & NOTES ADDED			
02DE85		RELEASED	85005	JP	FH
150C86		8.70 DIA. WAS 8.70 DIA. ON I2059572 CONNECTOR			
			109562	SM	FH
15SE87		ADDED NOTE #7.	115423	JP	FH
17FE88	B	ADHESIVE ADDED	118462	JP	FH
09JA89	BI	I2077412 TERMINAL WAS I2034454			
			890005	TLB	BAR
31JL89	B2	REVISED LOCK ARM	128104	FH	JP
18FE93	C	REMOVED ADHESIVE NOTE	153986	JP	JP

C04D2016

**METRIC**  
DIMENSIONS ARE IN MILLIMETERS UNLESS OTHERWISE SPECIFIED

THIRD ANGLE PROJECTION

CODE NO. 6900

QC-C-5110

DWG. DATE 02AU85 SCALE 2:1

DR. J. Parker 02DE85

CD.A.12059573

CK. F.HESTON DATE 09DE85

APPR. R.MAGA DATE 10DE85

12040753

APPR. T.CUNNINGHAM DATE 10DE85

MATERIAL SPEC. SEE DRAWING

NAME ASM CONN 6F M/P 280

PART NO. 1205 9573

SIZE D