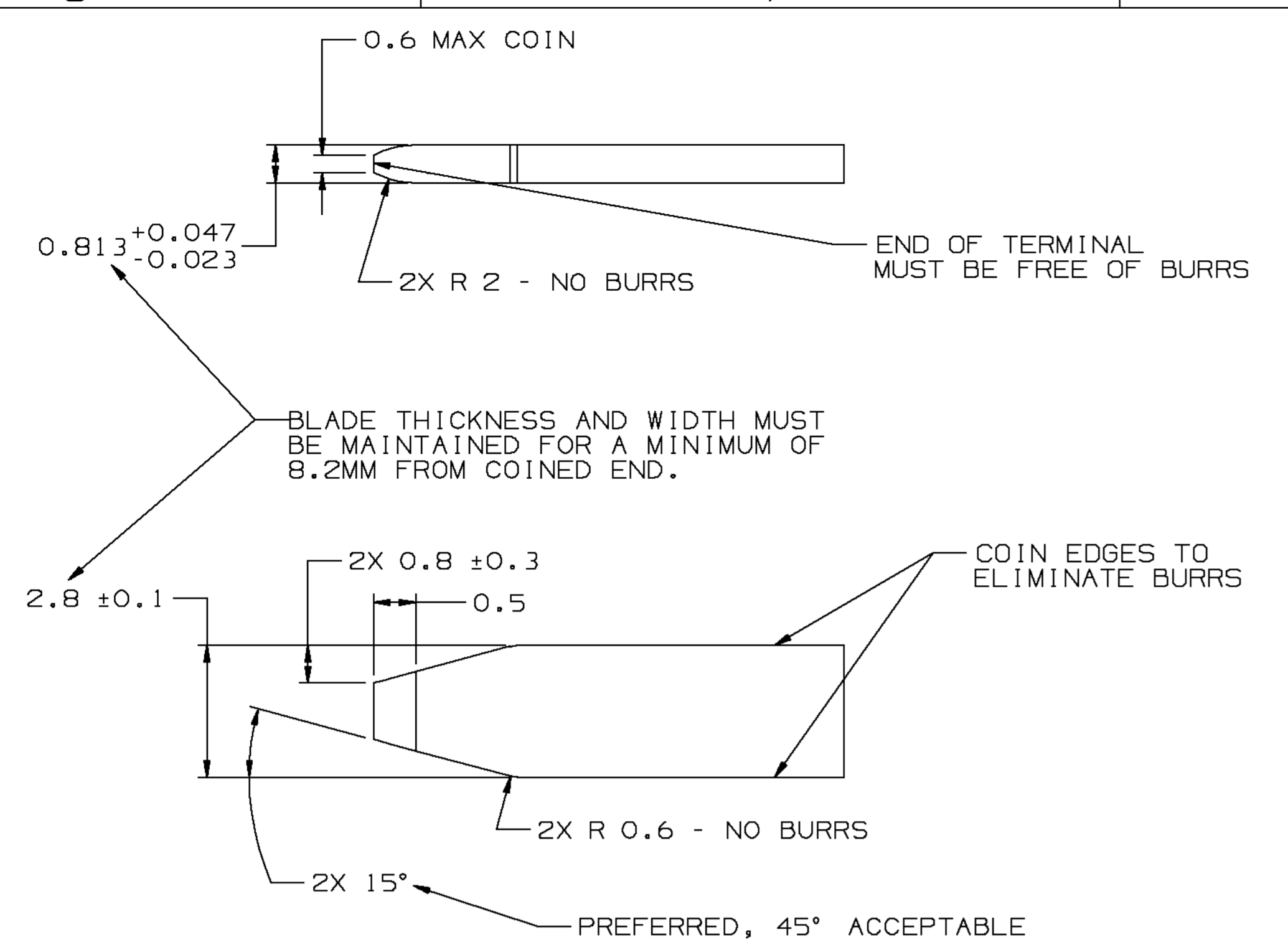


DELPHI PACKARD ELECTRIC SYSTEMS
WARREN, OHIO 44489

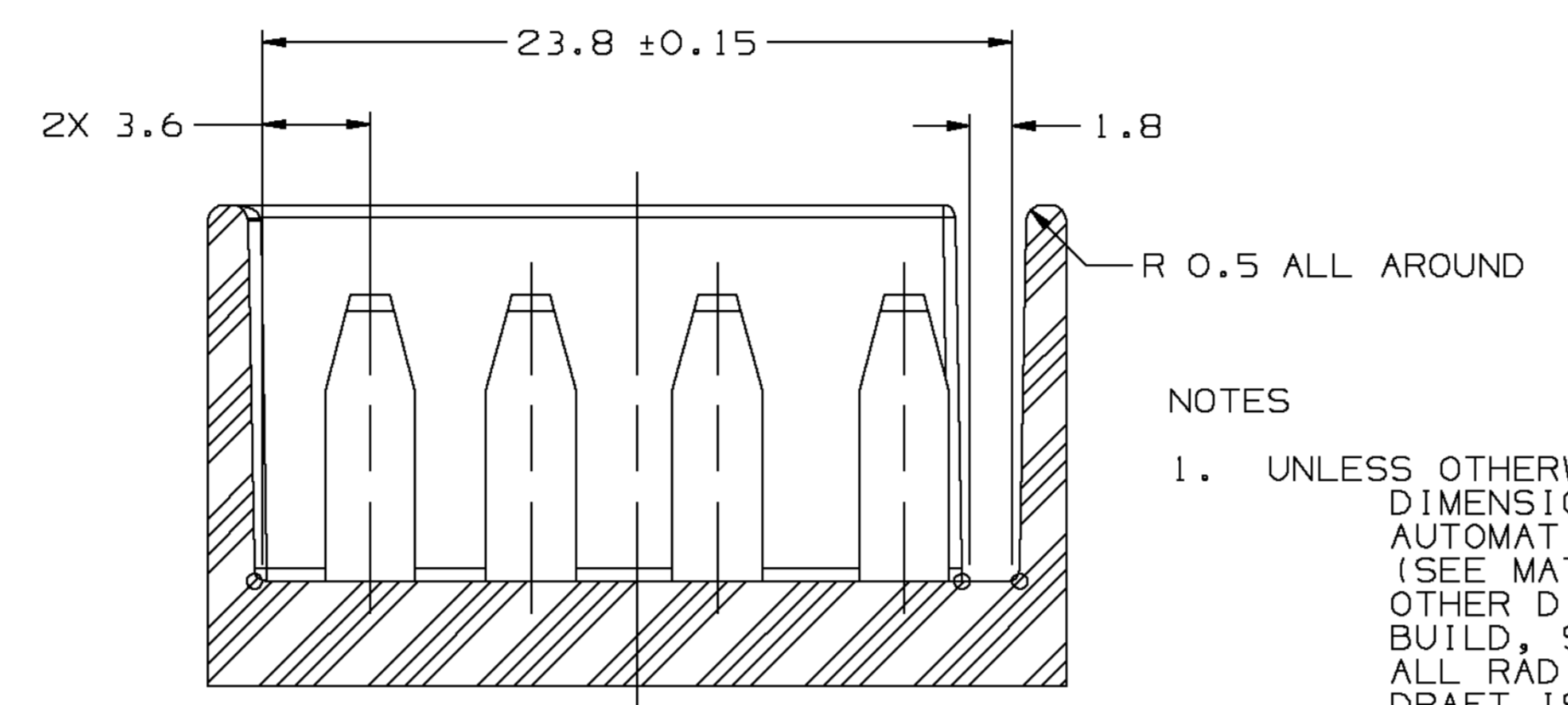
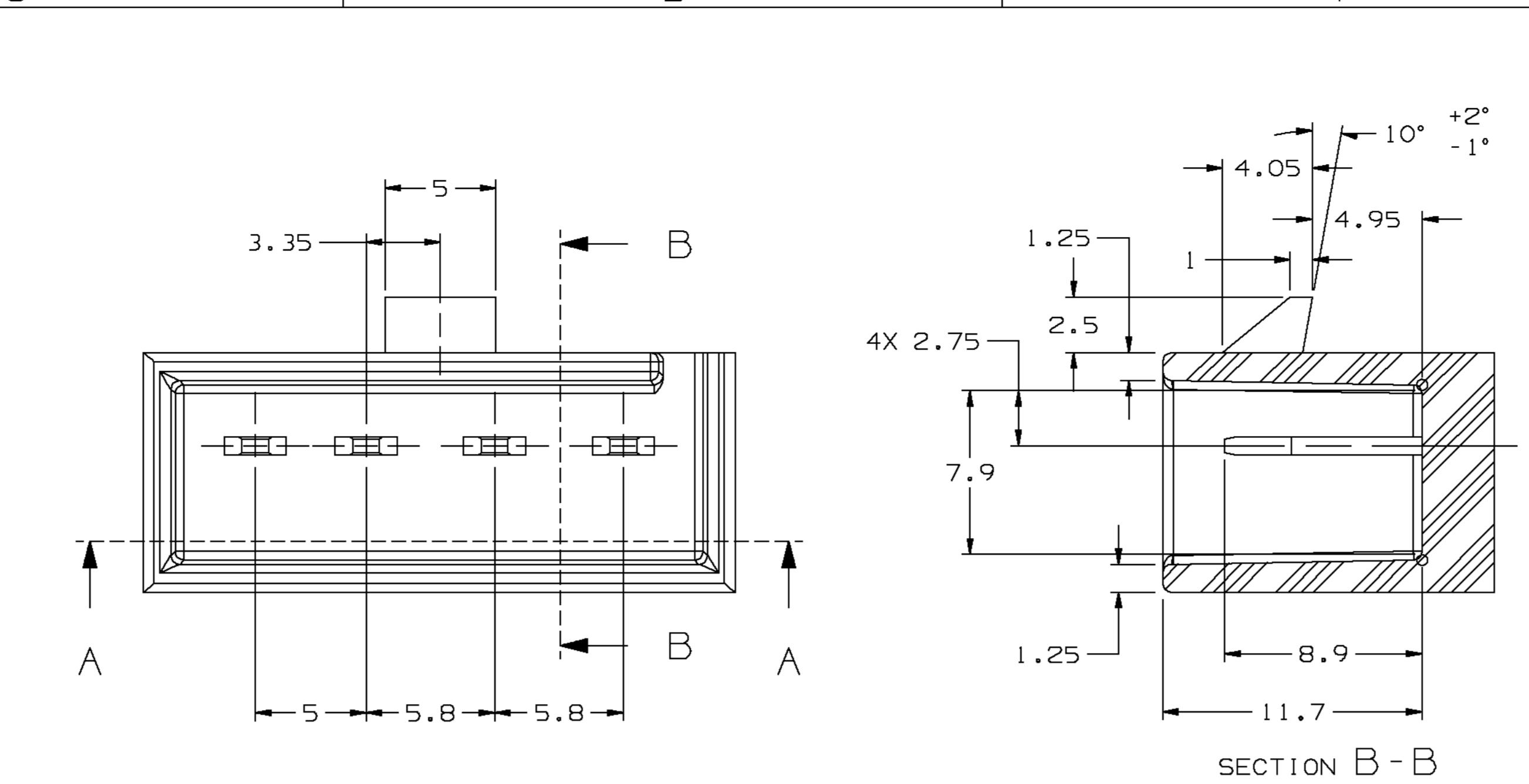


MATERIAL SPECIFICATIONS

RECOMMENDED
BASE METAL - CDA-210, GILDING, EXTRA SPRING TEMPER
PLATING - 0.0050 x 0.0025MM THICK TIN

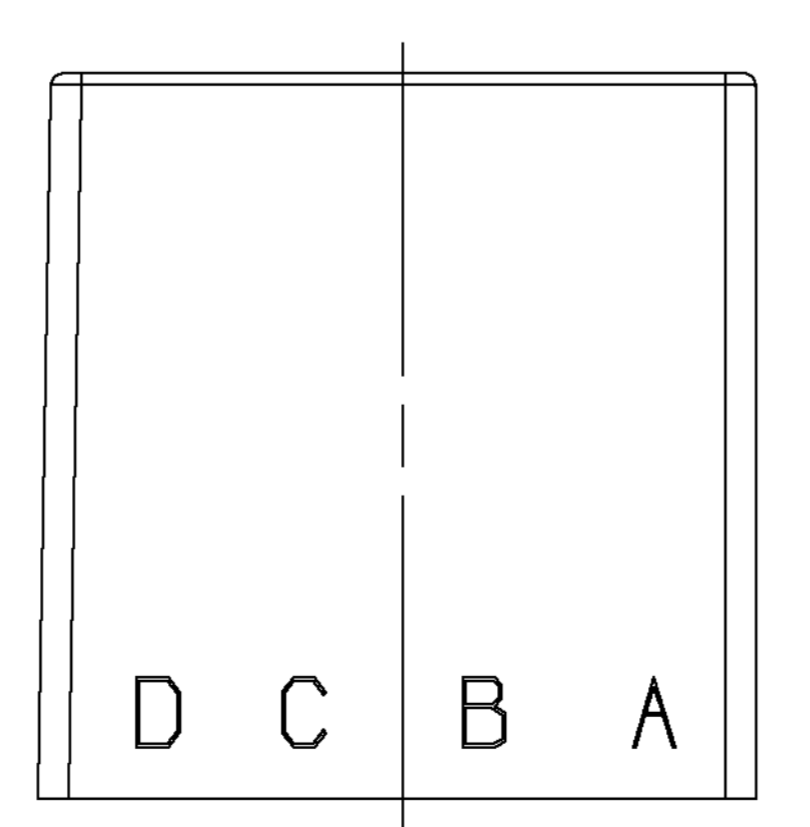
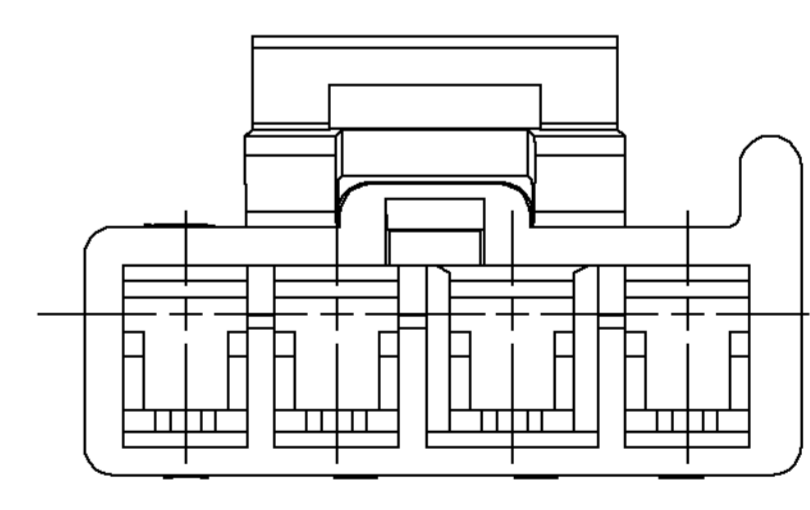
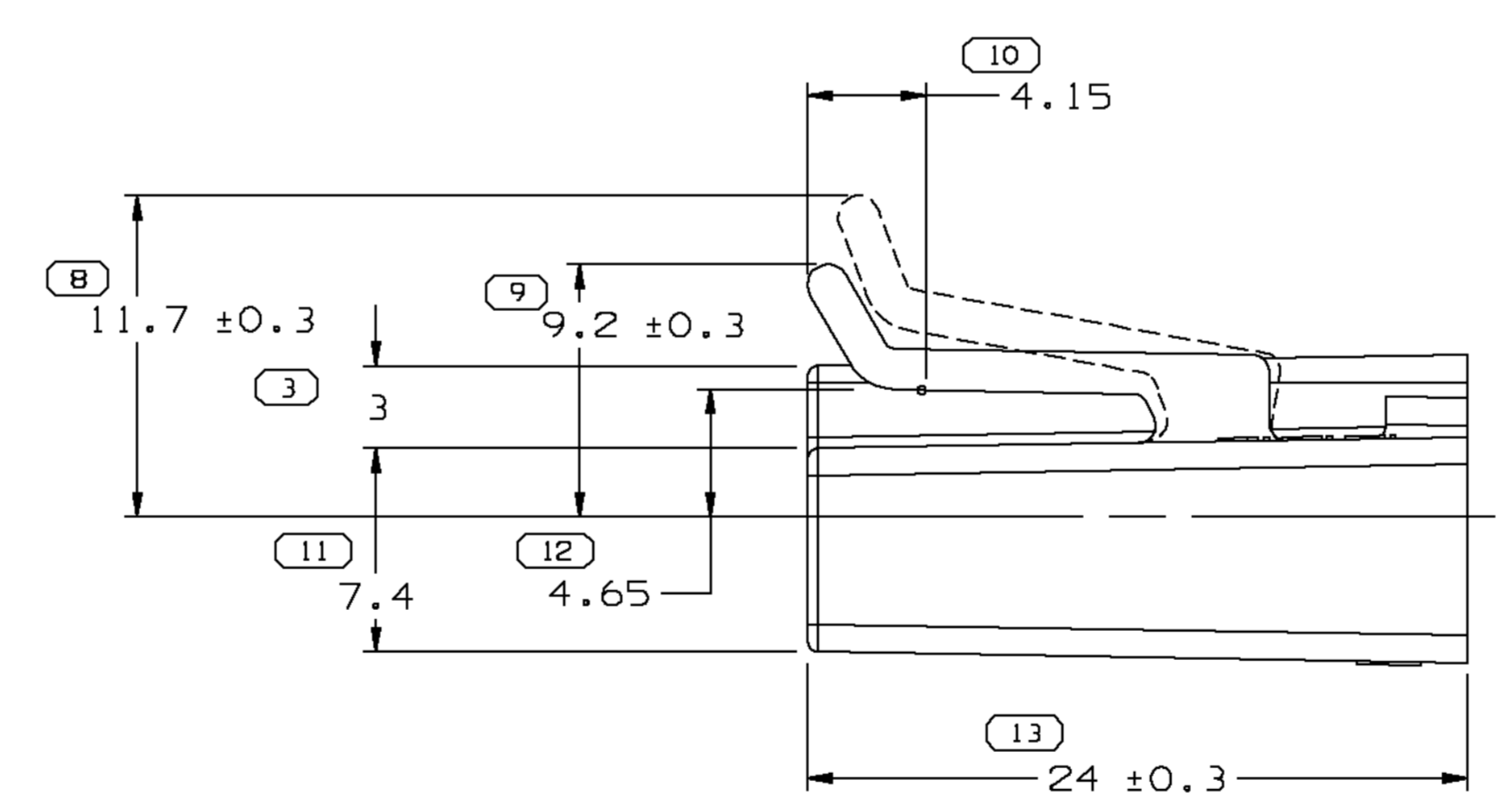
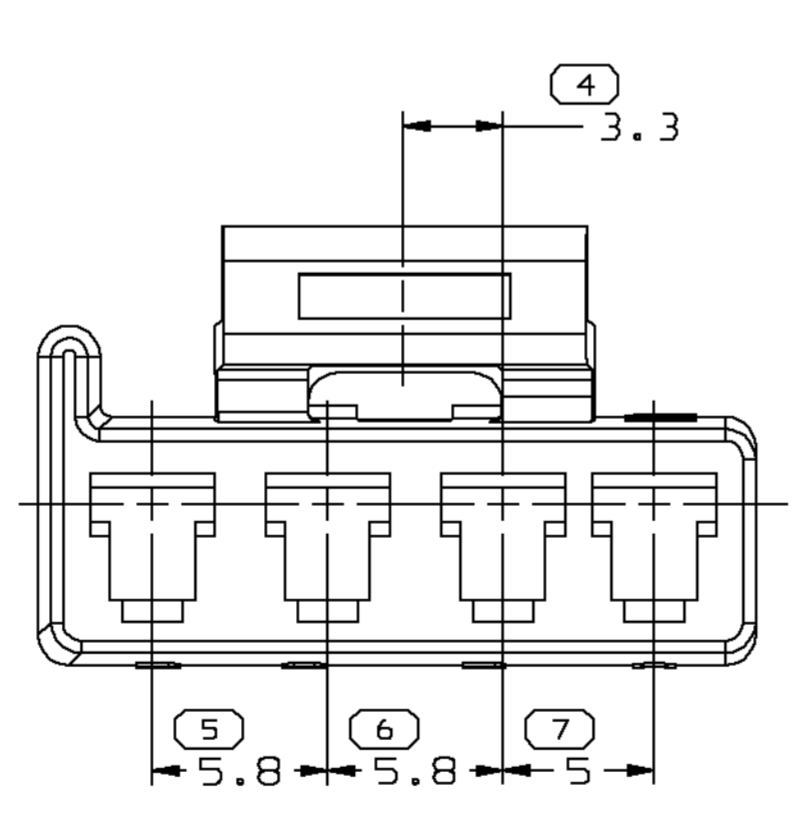
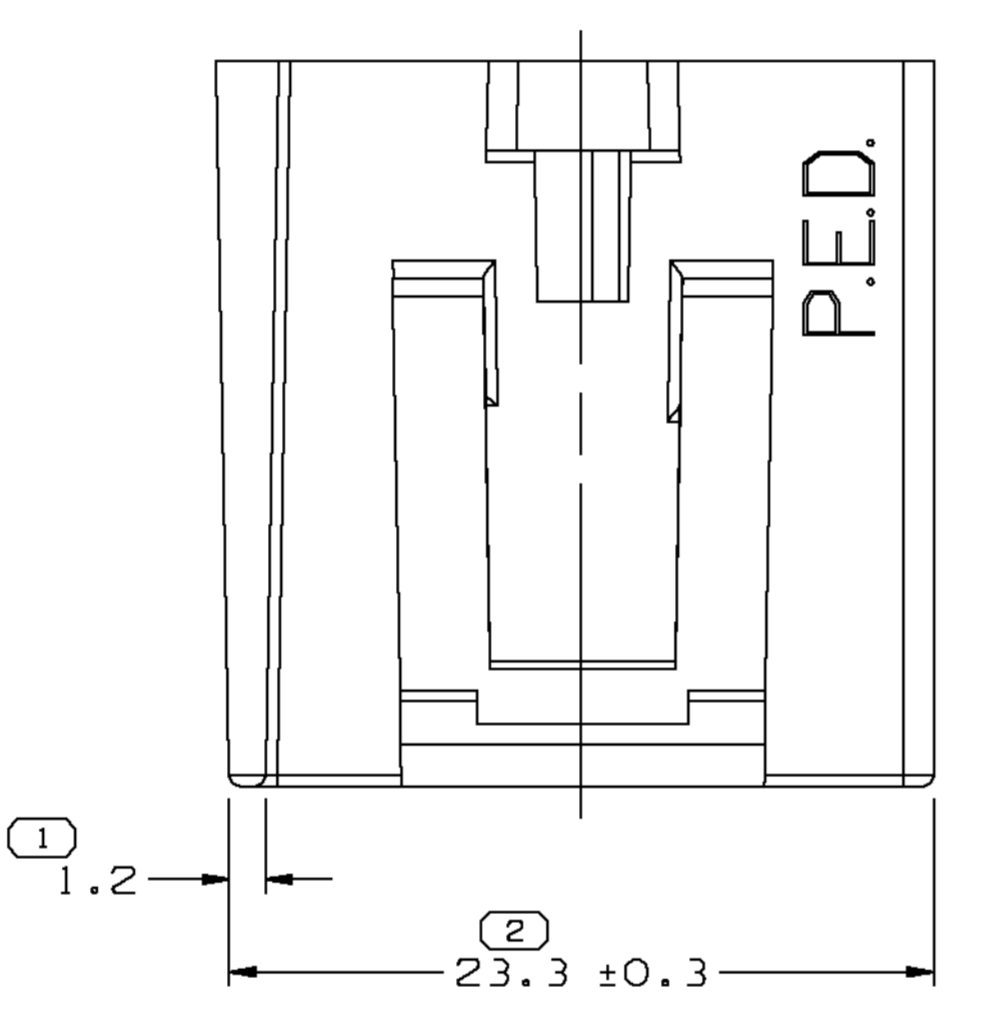
MINIMUMS
ELECTRICAL CONDUCTIVITY - >20% IACS AT 20° C. USE OF A MATERIAL WITH CONDUCTIVITY <20% IACS MUST BE APPROVED BY PACKARD ELECTRIC MATERIALS ENGINEERING.
TENSILE STRENGTH - 407 MPa
PLATING - FOR LOW ENERGY (<5V) AND NON-PASSENGER COMPARTMENT POWER CIRCUITS, 0.0050 x 0.0025MM THICK TIN. FOR MATERIALS CONTAINING 10% OR MORE ZINC, AN UNDERPLATE OF COPPER 0.0050 x 0.0025MM THICK IS REQUIRED.

MATING BLADE INFORMATION
SCALE 10:1



NOTES
 1. UNLESS OTHERWISE SPECIFIED AND/OR INDICATED: DIMENSIONS ARE TO FACE OF VIEW SHOWN AND AUTOMATICALLY ROUNDED BY COMPUTER FOR INSPECTION (SEE MATH MODEL FOR PRECISE DIMENSIONS). FOR ALL OTHER DIMENSIONS NOT SHOWN BUT REQUIRED FOR TOOL BUILD, SEE MATH MODEL FOR PRECISE TOOL PATH DATA. ALL RADIUS 0.4 DRAFT IS 1° ON ALL OUTSIDE SURFACES

MATING SWITCH DETAIL
SCALE 5:1



NOTES
 1. UNLESS OTHERWISE SPECIFIED AND/OR INDICATED: DIMENSIONS ARE TO FACE OF VIEW SHOWN AND AUTOMATICALLY ROUNDED BY COMPUTER FOR INSPECTION (SEE MATH MODEL FOR PRECISE DIMENSIONS). FOR ALL OTHER DIMENSIONS NOT SHOWN BUT REQUIRED FOR TOOL BUILD, SEE MATH MODEL FOR PRECISE TOOL PATH DATA. LIKE CAVITIES ARE IDENTICAL. LOCKING FEATURES ARE IDENTICAL.
 2. MATING COMPONENTS OR EQUIVALENT: 1995301 DELCO-REMY DIMMER SWITCH
 3. THIS PART ACCEPTS THE FOLLOWING COMPONENTS OR EQUIVALENT: CAVITIES TO ACCEPT 12015823 TERMINAL TERMINAL POSITION ASSURANCE 15324456

SYMBOL DEFINITION		MISSING NUMBERS	
THE NUMBER INSIDE THE SYMBOL CORRESPONDS TO THE NUMBER ON THE INSPECTION REPORT FOR THIS DRAWING/PART NUMBER	TOTAL NO. OF SYMBOLS ON DRAWING	13	
	LAST NO. USED	13	

DATE	SYM	REVISION RECORD	AUTH	DR	CK
03MROO	C2	REDRAWN TO PD & TPA 15.324456 WAS 12052857	199290RGT	TEAR	

PART NO 1205 2856

PART NO 1205 2856

PART DRAWING		THIRD ANGLE PROJECTION	
Ugraphics			
CODE NO 6900	QC	METRIC DIMENSIONS ARE IN MILLIMETERS UNLESS OTHERWISE SPECIFIED	
DWG DATE 28SE98	DES	SCALE 5:1	
REFERENCE NO 001,701	DR R. LAUNDRIES 15JABS	CK F. HESTON 31JABS	APPR F. MLAKED 25FEBS
	VOL CW 2.480		

(13) PROCESS SENSITIVE DIMENSION		DIMENSIONS ENCLOSED IN (1) INDICATE REFERENCE DIMENSIONS AND NO TOLERANCE LIMITS ARE ESTABLISHED	
FROM	DIMENSIONAL RANGE	TO	TOLERANCE UNLESS OTHERWISE SPECIFIED
0	> 20	> 30	> 70
20	> 30	> 70	> 100
± 0.15	± 0.2	± 0.3	± 0.4
ANGULAR TOLERANCE ± 2'			

PART NUMBER 1205 2856
 SIZE AO
 CONN 4F M/P 280