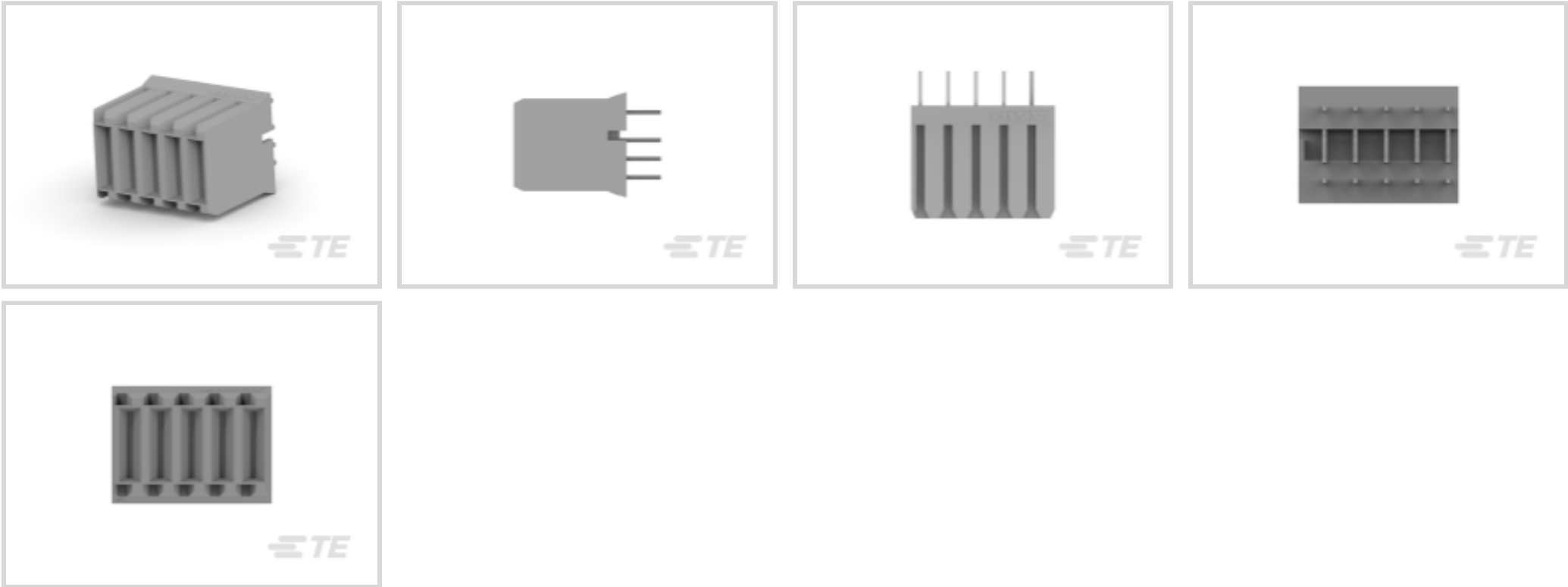




Connectors > Power Connectors > Rectangular Power > Rectangular Power Connectors



Rectangular Power Connector Type: **Connector Assembly**

Connector & Housing Type: **Receptacle**

Connector System: **Board-to-Board**

Number of Positions: **5**

Centerline (Pitch): **3 mm [ .118 in ]**

Features

Product Type Features

|                                   |                       |
|-----------------------------------|-----------------------|
| Rectangular Power Connector Type  | Connector Assembly    |
| Connector & Housing Type          | Receptacle            |
| Connector System                  | Board-to-Board        |
| Sealable                          | No                    |
| Connector & Contact Terminates To | Printed Circuit Board |

Configuration Features

|                            |          |
|----------------------------|----------|
| Number of Positions        | 5        |
| Interface Type             | 2mm HM   |
| PCB Mount Orientation      | Vertical |
| Number of Power Positions  | 5        |
| Number of Signal Positions | 0        |
| Number of Rows             | 1        |

Electrical Characteristics

|                   |         |
|-------------------|---------|
| Operating Voltage | 250 VDC |
|-------------------|---------|



Contact Features

|  |                                 |
|--|---------------------------------|
| Contact Base Material                          | Copper Alloy                    |
| Contact Current Rating (Max)                   | 16 A                            |
| Contact Retention Within Housing               | With                            |
| Contact Type                                   | Receptacle                      |
| PCB Contact Termination Area Plating Material  | Tin                             |
| Contact Mating Area Plating Material           | Noble Metal                     |
| Contact Mating Area Plating Material Thickness | .5 – 1.25 µm[19.68 – 49.21 µin] |

Termination Features

|   |                          |
|---|--------------------------|
| Termination Method to Printed Circuit Board | Through Hole - Press-Fit |
|---|--------------------------|

Mechanical Attachment

|                         |             |
|-------------------------|-------------|
| Connector Mounting Type | Board Mount |
|-------------------------|-------------|

Housing Features

|                    |               |
|--------------------|---------------|
| Centerline (Pitch) | 3 mm[.118 in] |
| Housing Color      | Gray          |
| Housing Material   | Polyester GF  |

Usage Conditions

|                             |                            |
|-----------------------------|----------------------------|
| Operating Temperature Range | -55 – 125 °C[-67 – 257 °F] |
|-----------------------------|----------------------------|

Operation/Application

|                     |       |
|---------------------|-------|
| Circuit Application | Power |
|---------------------|-------|

Industry Standards

|                        |                               |
|------------------------|-------------------------------|
| UL Flammability Rating | UL 94V-0                      |
| Glow Wire Rating       | Standard Part - Not Glow Wire |
| Agency/Standard Number | E28476                        |

Packaging Features

|                  |     |
|------------------|-----|
| Packaging Method | Box |
|------------------|-----|

Product Compliance

For compliance documentation, visit the product page on TE.com>

|                              |              |
|------------------------------|--------------|
| EU RoHS Directive 2011/65/EU | Compliant    |
| EU ELV Directive 2000/53/EC  | Out of Scope |
|                              |              |



|   |   |
|---|---|
| China RoHS 2 Directive MIIT Order No 32, 2016 | No Restricted Materials Above Threshold   |
| EU REACH Regulation (EC) No. 1907/2006        | Current ECHA Candidate List: JAN 2022 (223)<br>Candidate List Declared Against: JAN 2022 (223)<br>Does not contain REACH SVHC |
| Halogen Content                               | Not Low Halogen - contains Br or Cl > 900 ppm.  |
| Solder Process Capability                     | Not applicable for solder process capability  |

Product Compliance Disclaimer

This information is provided based on reasonable inquiry of our suppliers and represents our current actual knowledge based on the information they provided. This information is subject to change. The part numbers that TE has identified as EU RoHS compliant have a maximum concentration of 0.1% by weight in homogenous materials for lead, hexavalent chromium, mercury, PBB, PBDE, DBP, BBP, DEHP, DIBP, and 0.01% for cadmium, or qualify for an exemption to these limits as defined in the Annexes of Directive 2011/65/EU (RoHS2). Finished electrical and electronic equipment products will be CE marked as required by Directive 2011/65/EU. Components may not be CE marked. Additionally, the part numbers that TE has identified as EU ELV compliant have a maximum concentration of 0.1% by weight in homogenous materials for lead, hexavalent chromium, and mercury, and 0.01% for cadmium, or qualify for an exemption to these limits as defined in the Annexes of Directive 2000/53/EC (ELV). Regarding the REACH Regulation, the information TE provides on SVHC in articles for this part number is based on the latest European Chemicals Agency (ECHA) 'Guidance on requirements for substances in articles' posted at this URL: <https://echa.europa.eu/guidance-documents/guidance-on-reach>

Compatible Parts



TE Part # 120955-1  
TE UPM R/A Header 5P HC Power, LLLLL




TE Part # 1645526-1  
UPM RA Header 4P Hi Current Connector

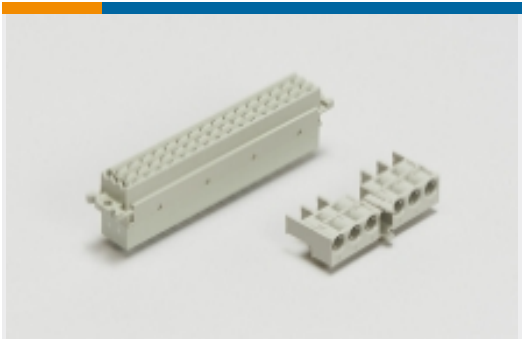


TE Part # 1645498-3  
UNV,PWR,MDL.5 POS. VERT.HDR, 15MM STACK


Also in the Series | Z-PACK 2mm HM



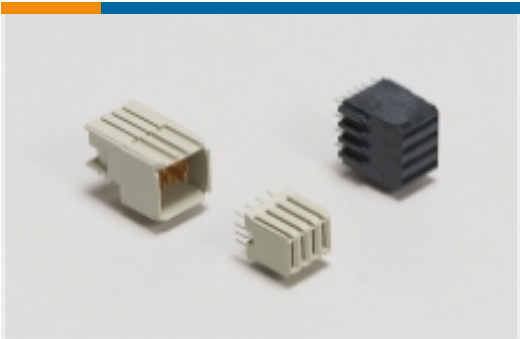
Backplane Coding Keys(60)



Backplane Connector Housings(4)



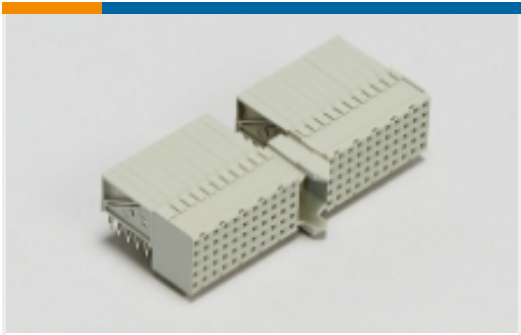
Backplane Guide Hardware(37)



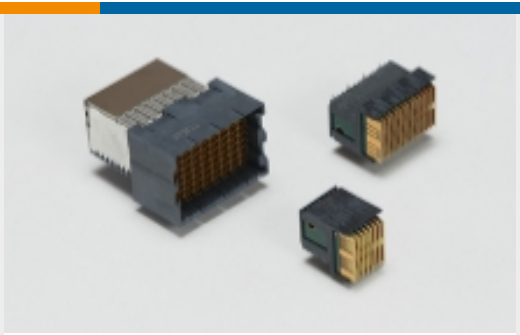
Backplane Power Connectors(6)



Board-to-Board Connector Contacts(2)



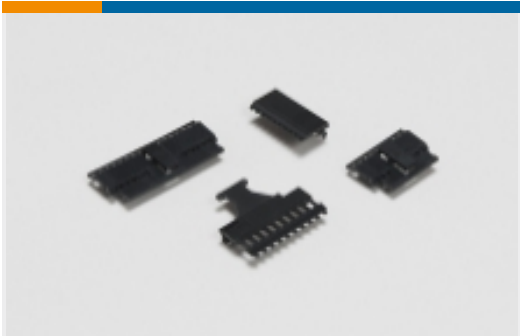
Hard Metric Backplane Connectors (269)



High Speed Backplane Connectors(1)



Insertion & Extraction Tools(2)



PCB Connector Covers(4)



PCB Connector Shrouds(39)



PCB Ferrules & Shields(19)

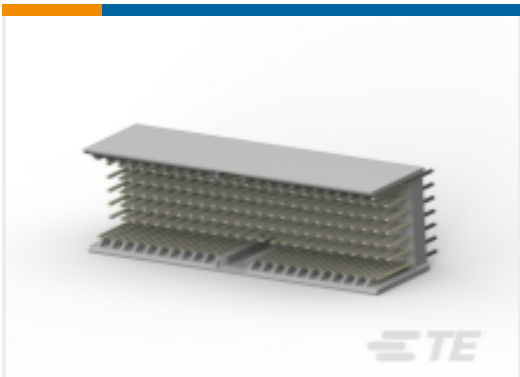


PCB Latches, Locks & Retainers(1)



Rectangular Power Connectors(87)

Customers Also Bought



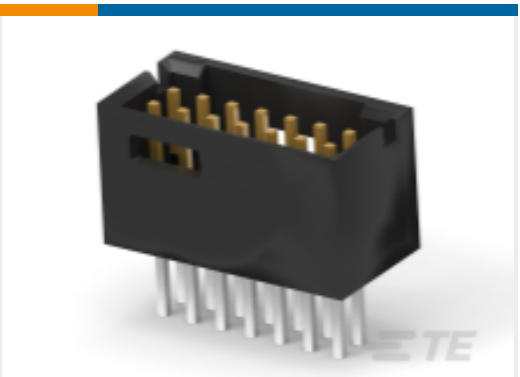
TE Part #5646529-1  
Z-PACK 2MM HM TYPE A/B 169P



TE Part #1-1469373-1  
ATCA GUIDE MODULE RA FEMALE



TE Part #2304807-1  
CAGE ASSY, QSFP28 1X1, SPRING, HS



TE Part #5-102699-6  
14 MODII HDR DRST SHRD A/PIN



TE Part #5-102699-8  
18 MODII HDR DRST SHRD A/PIN



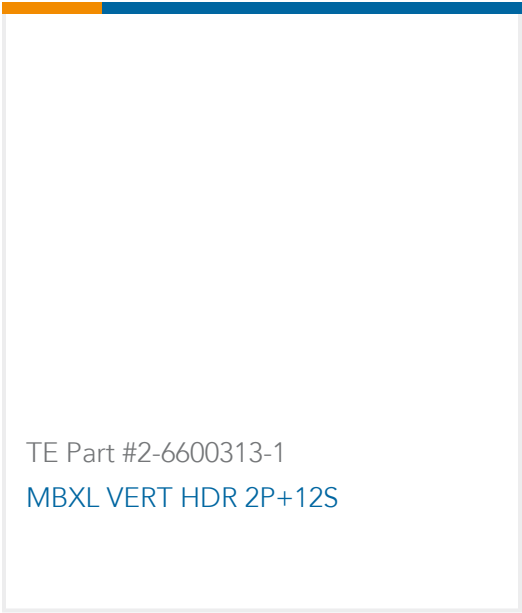
TE Part #5-104911-1  
05 MTE HDR SRST LATCH .100CL



TE Part #5536098-5  
ASSY,PIN,EURO,TYPE R,LEAD-FREE, A&C,64/96



TE Part #6-102699-4  
30 MODII HDR DRST SHRD A/PIN



Documents

Product Drawings

TE UPM Ver Receptacle 5P HC Power

English

CAD Files

Customer View Model

ENG\_CVM\_CVM\_120953-2\_A.2d\_dxf.zip

English

3D PDF

3D

Customer View Model

ENG\_CVM\_CVM\_120953-2\_A.3d\_igs.zip

English

Customer View Model

ENG\_CVM\_CVM\_120953-2\_A.3d\_stp.zip

English

By downloading the CAD file I accept and agree to the [Terms and Conditions](#) of use.

Datasheets & Catalog Pages

High Speed Backplane Connectors catalog - Z-PACK HS3 Connector

English

POWER\_CONNECTORS\_CATALOG\_SEC01\_BOARD\_TO\_BOARD

English

2\_PIECE\_POWER\_CONNECTORS\_qrg\_4-1773458-1

English

Product Specifications

English

Product Environmental Compliance

TE Material Declaration

English