

NOTE- TERMINALS ARE IDENTICAL

MATERIAL SPECIFICATIONS:

RECOMMENDED
BASE METAL - CDA-210, BILDING, SPRING TEMPER
PLATING - 0.0025/0.0075 MM THICK TIN

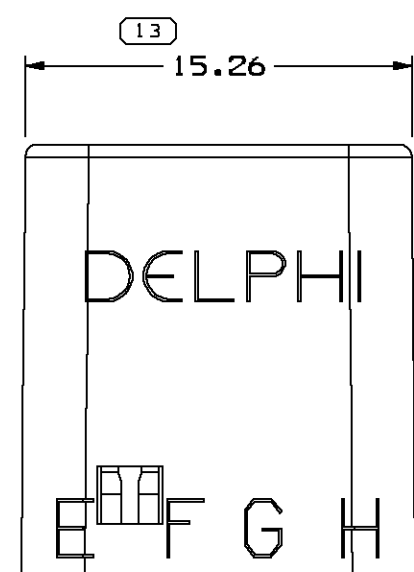
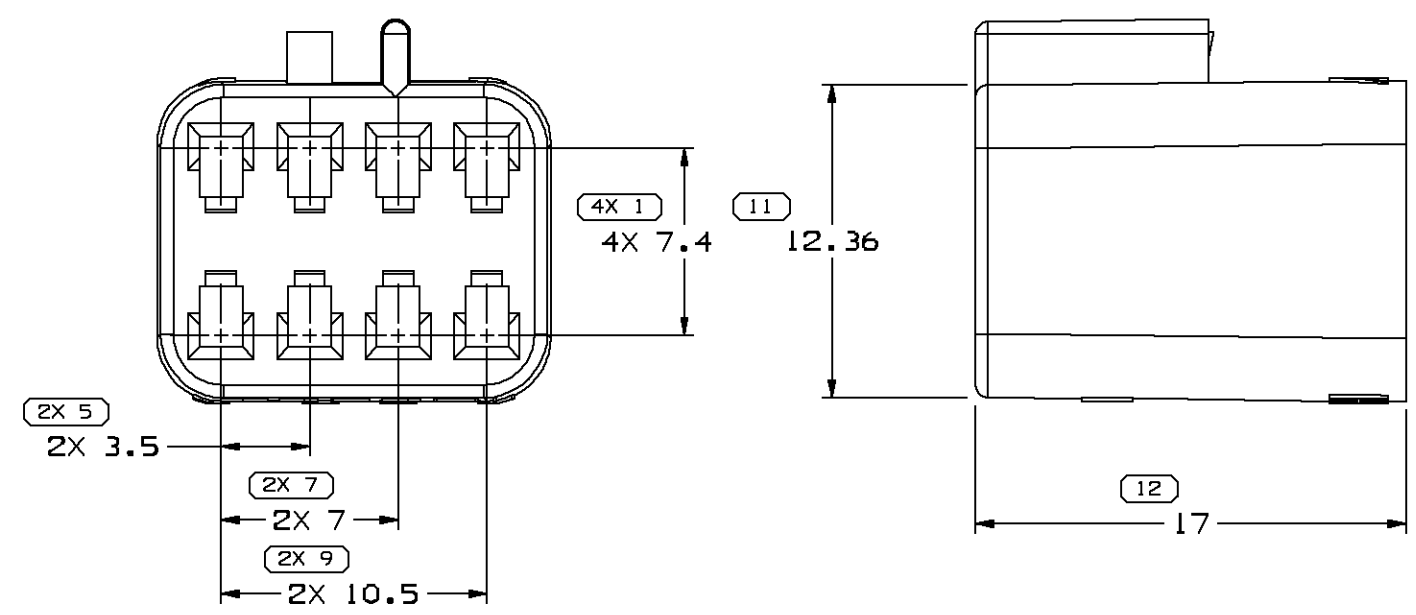
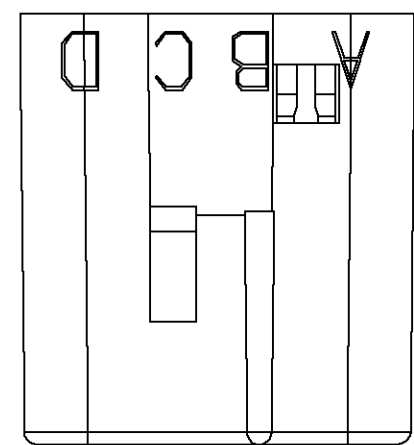
MINIMUMS
ELECTRICAL CONDUCTIVITY - ≥ 20% IACS @ 20°C. USE OF A MATERIAL WITH CONDUCTIVITY < 20% IACS MUST BE APPROVED BY PACKARD ELECTRIC MATERIALS ENGINEERING.

TENSILE STRENGTH - 407 MPa

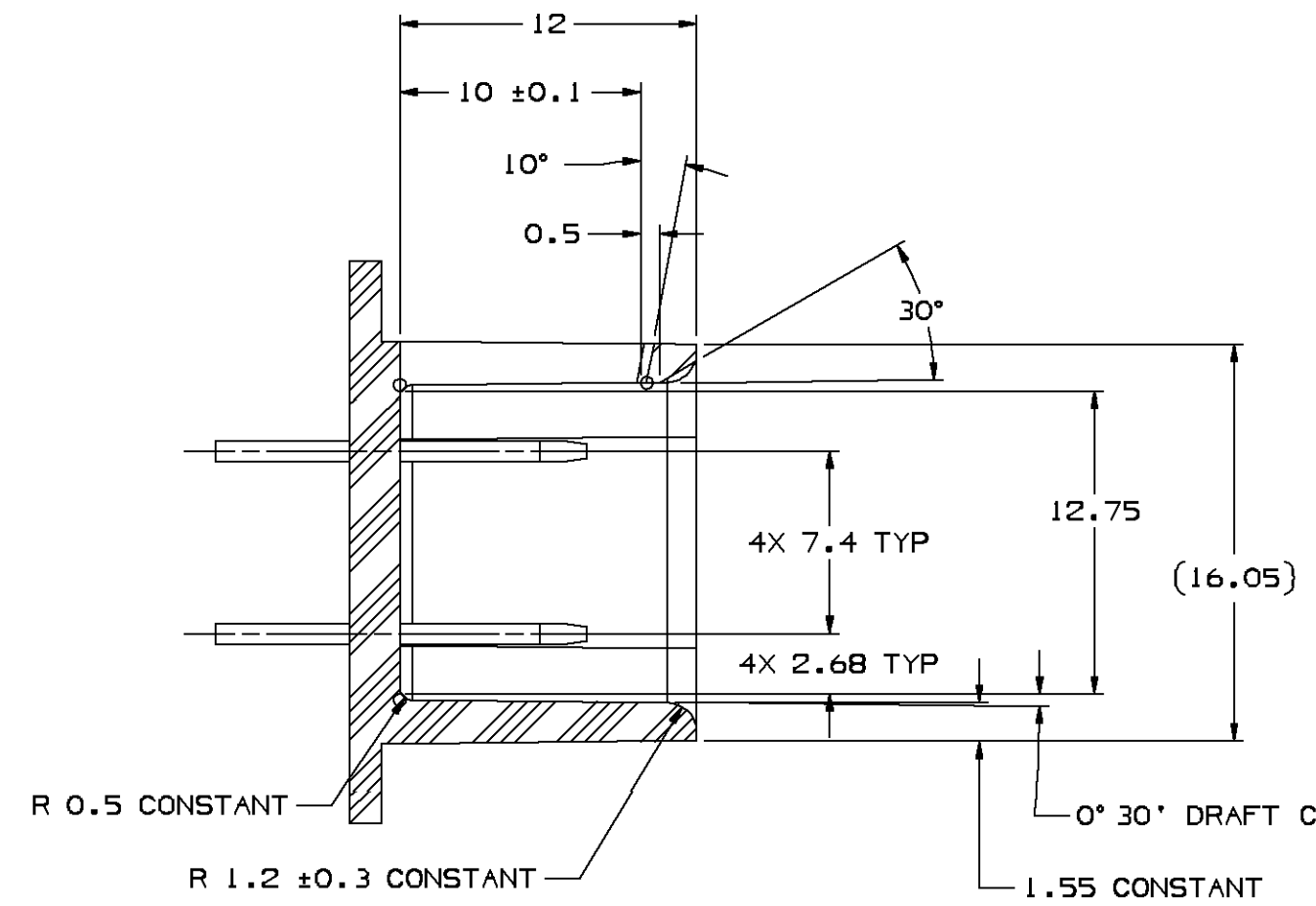
PLATING - FOR LOW ENERGY (< 5v) & NON-PASSENGER COMPARTMENT POWER CIRCUITS, 0.0025/0.0075 MM THICK TIN. FOR MATERIALS CONTAINING 10% OR MORE ZINC, AN UNDERPLATE OF COPPER 0.0025/0.0075 MM THICK IS REQUIRED.

BLADE THICKNESS
UNPLATED = 0.813 ± 0.025
TIN PLATED = 0.825 ± 0.350

MATING SHROUD INFORMATION
SCALE 10:1



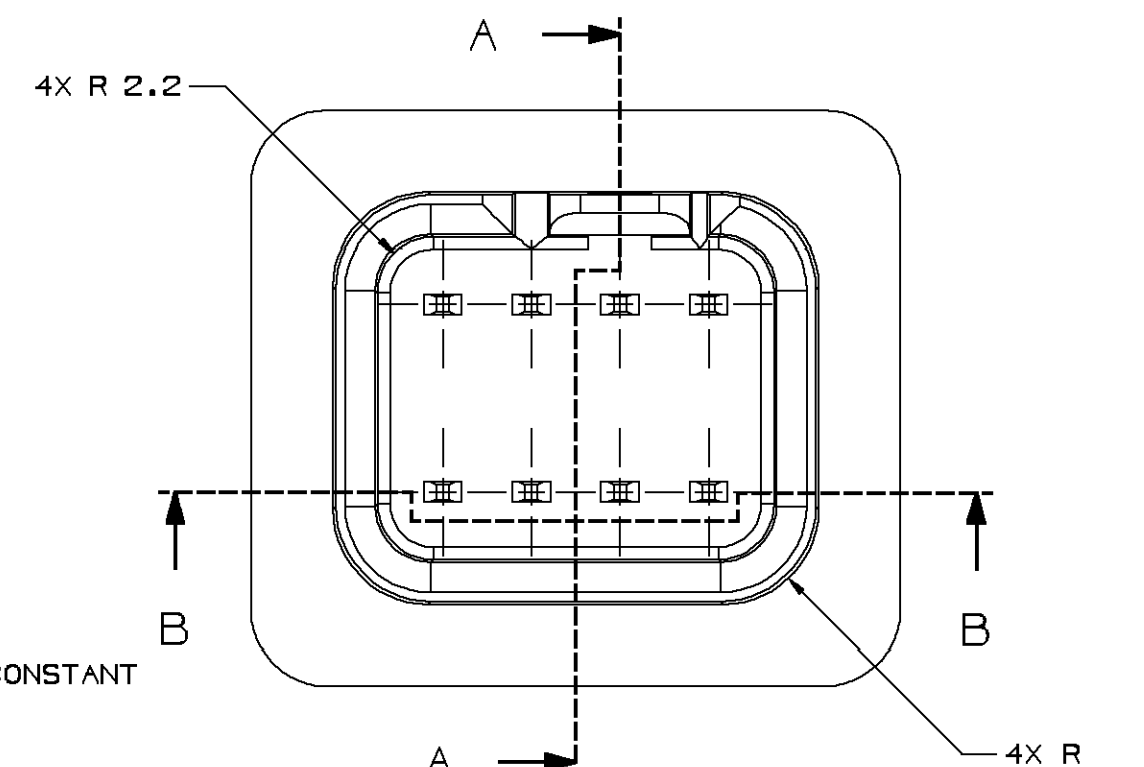
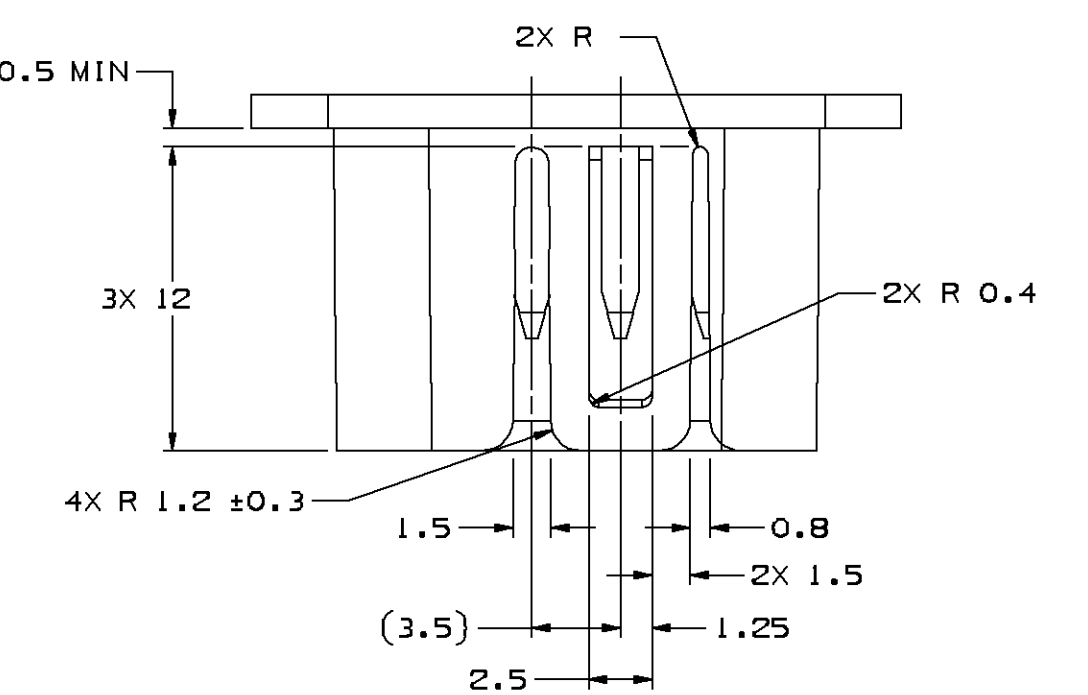
TYPE 101



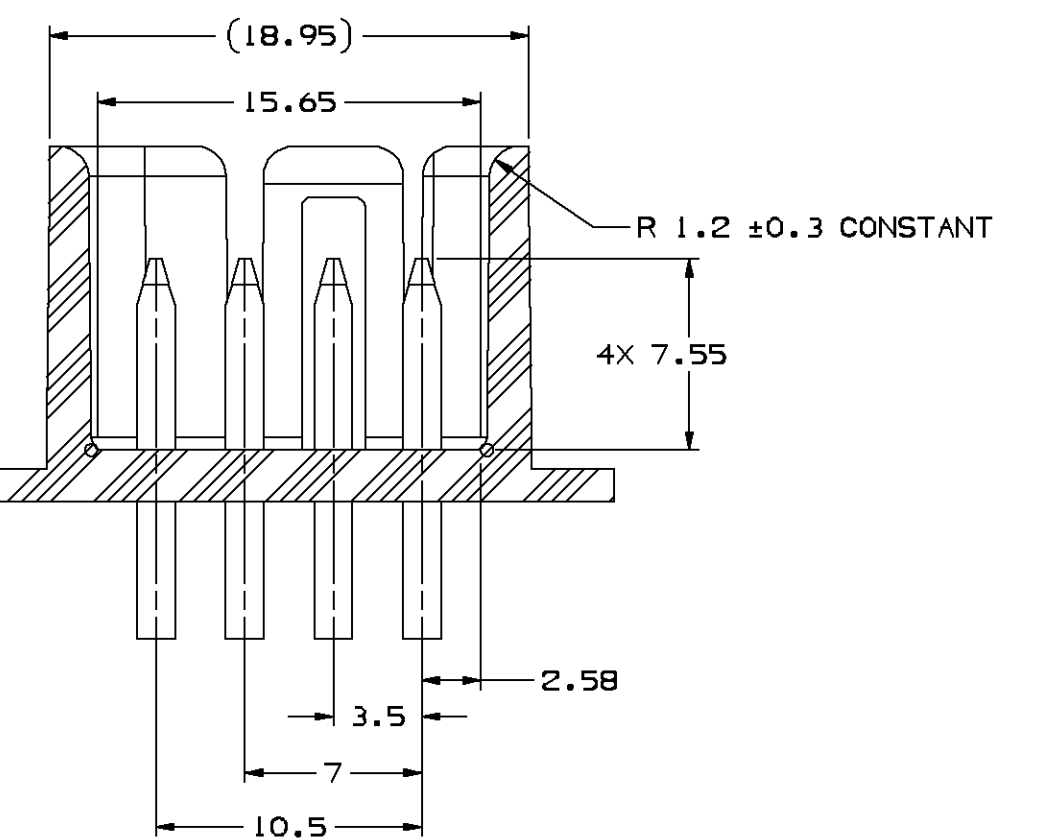
SECTION A-A
MATING SHROUD INFORMATION

NOTES:

- UNLESS OTHERWISE SPECIFIED AND/OR INDICATED: DIMENSIONS ARE TO FACE OF VIEW SHOWN AND AUTOMATICALLY ROUNDED BY COMPUTER FOR INSPECTION. (SEE MATH MODEL FOR PRECISE DIMENSION) ALL RADIUS 0.5 DRAFT IS 0° 30' ON ALL OUTSIDE SURFACES
- TERMINALS MUST WITHSTAND A MINIMUM PUSHOUT FORCE OF 89N (20 LBS)
- RECOMMENDED BODY MATERIAL: NYLON 66 OR EQUIVALENT FLEXIBLE THERMOPLASTIC.

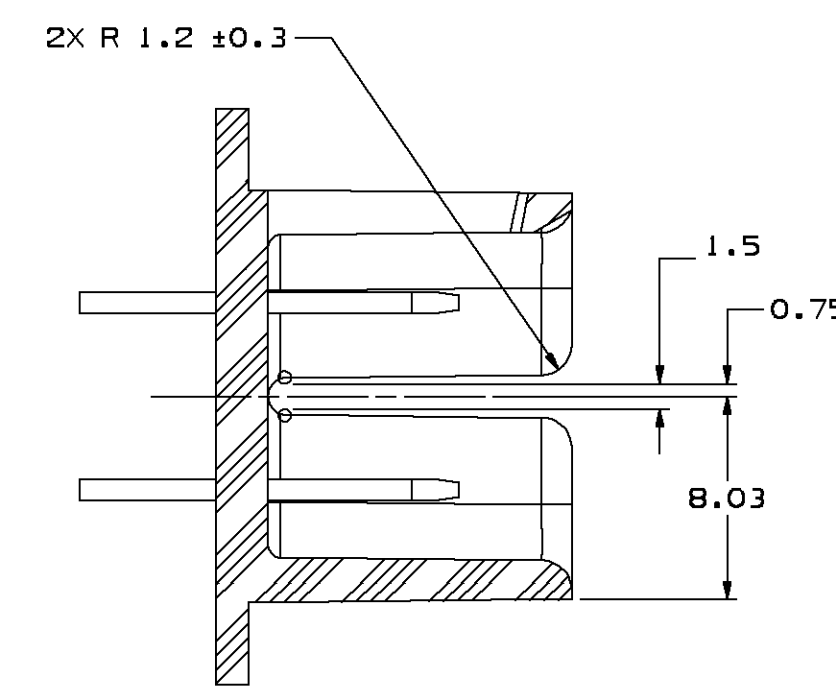


TYPE 101

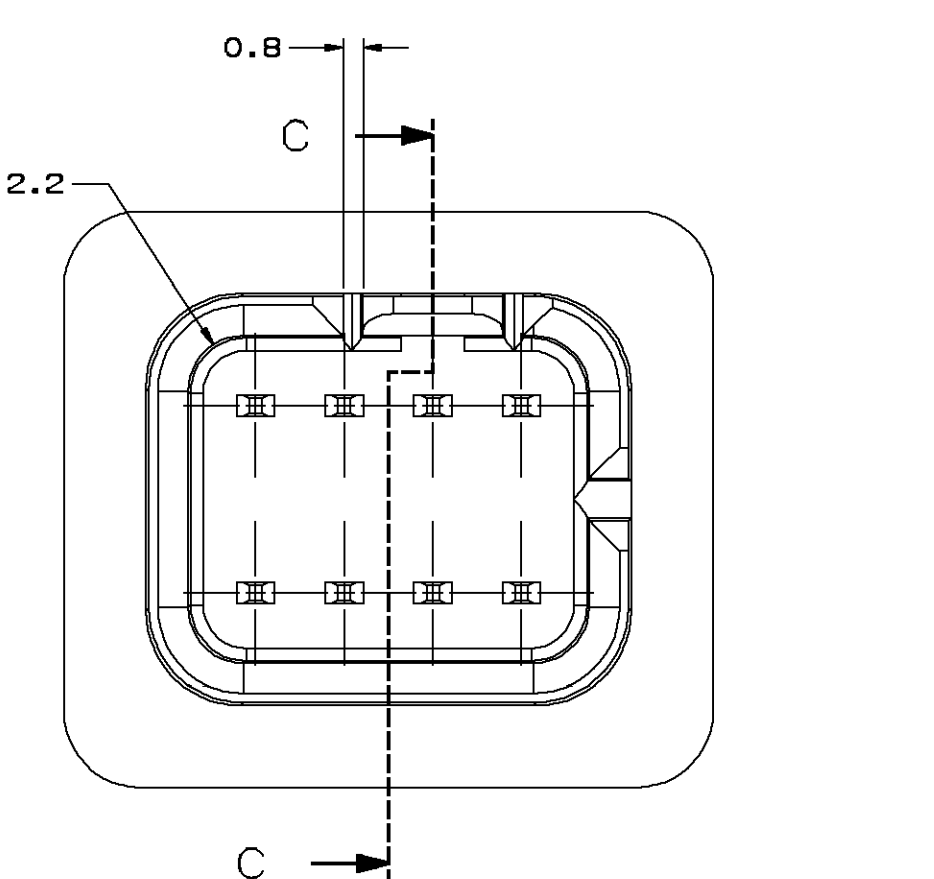
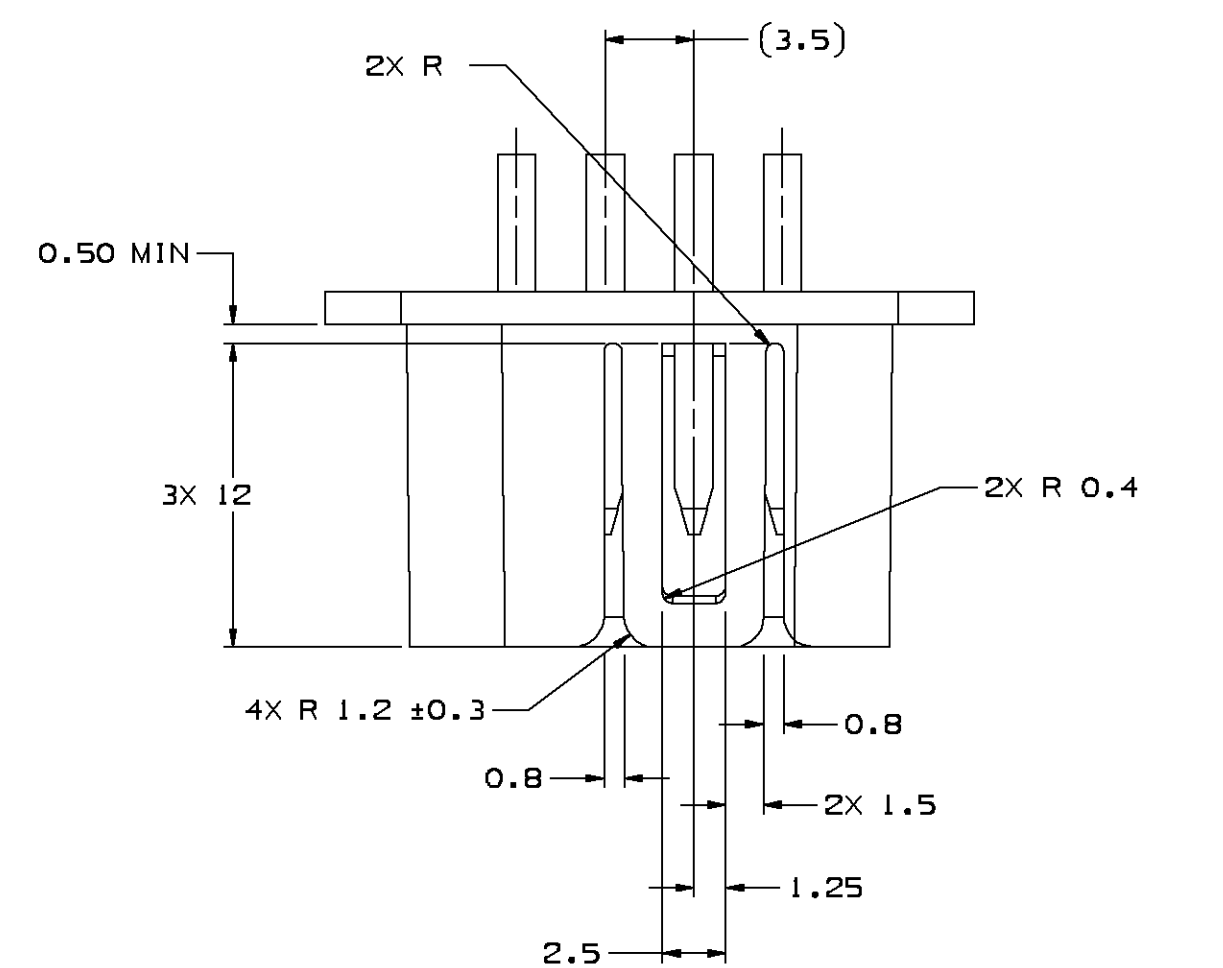


SECTION B-B
LOCK ARM NOT SHOWN FOR CLARITY

MATING SHROUD INFORMATION



SECTION C-C



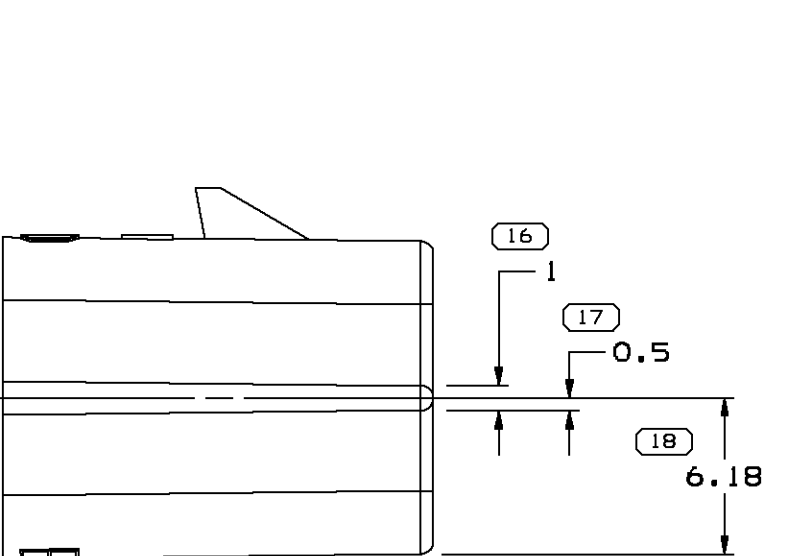
TYPE 102

SAME AS TYPE 101 EXCEPT AS SHOWN

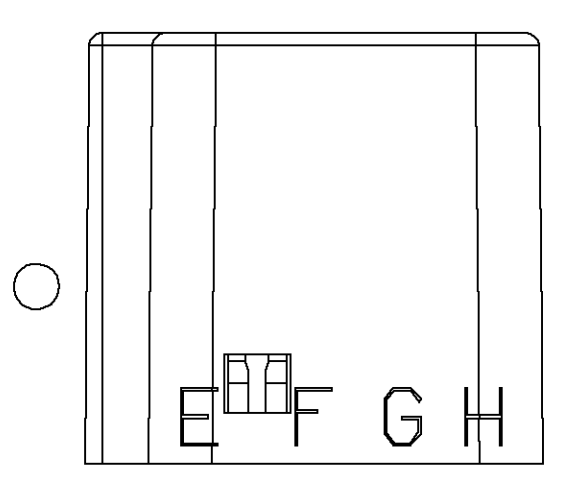
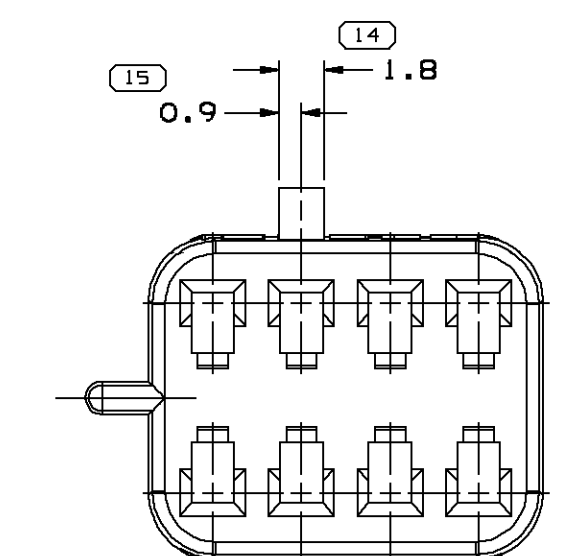
MATING SHROUD INFORMATION

NOTES:

- UNLESS OTHERWISE SPECIFIED AND/OR INDICATED: DIMENSIONS ARE TO FACE OF VIEW SHOWN AND AUTOMATICALLY ROUNDED BY COMPUTER FOR INSPECTION. (SEE MATH MODEL FOR PRECISE DIMENSION)
- MATING COMPONENTS OR EQUIVALENT: CONNECTOR 12045688 TERMINAL 12047883 MAX INSULATION CRIMP MUST BE LESS THAN 2.3 HIGH AND 2.7 WIDE SECONDARY TERMINAL LOCK 12045689, 2 PER CONNECTOR
- THIS PART WILL PASS THRU A 18.5 DIA MIN HOLE.
- MATERIAL RECYCLING CODE >PA66< PER SAE J1344. (21X10.1) RAISED CHARACTERS AS SHOWN TO BE LOCATED ON ANY EXTERIOR SURFACE. OPTIONAL CONSTRUCTION TO BE NO MATERIAL RECYCLING CODE.
- (21X10.1) RAISED DELPHI CORPORATE BRAND TO BE LOCATED ON ANY EXTERIOR SURFACE, PREFERABLY VISIBLE AT FINAL ASSEMBLY. OPTIONAL CONSTRUCTION TO BE "PED" OR NO LOGO.



TYPE 102
SAME AS TYPE 101 EXCEPT AS SHOWN



DRAWING NUMBER		12065399	
SIZE	SCALE	FRAME NO	SHEET NO
A1x3	5:1	2 OF 2	1 OF 1
REV	N/P	DATE	BY
07			

12186098	03	AD	M3592012 PA66 IM HS GRA LY	102	1.909	
12065398	03	-	M3592024 PA66 HS IM GRN	101	1.878	
12047886	02	AB	M3592001 PA66 IM HS BLK	101	1.878	
PART NO	REV	N/P	STATUS	MATERIAL SPECIFICATION AND COLOR	TYPE	VOLUME CM³

SYMBOL DEFINITION		TOTAL NO OF INSPECTIONS REQUIRED	18
A DIMENSION WITHOUT AN INSPECTION REPORT SYMBOL DOES NOT REQUIRE INSPECTION. IT MAY BE CONTROLLED ON THE INDIVIDUAL COMPONENT DRAWING.		LAST NO. USED	18

MISSING SYMBOLS		2-4 6 8 10
-----------------	--	------------

DATE	REV	N/P	Q/S	ZONE	REVISION HISTORY	AUTH	DR	APPROV	2
040001	R	02	-	-	ALL PARTS - REVISED GRAPHICS, ADDED OPTIONAL CONSTRUCTION & REVISED MATERIAL SPECIFICATION	212476	PH	EOV	18
12DE01	R	03	-	-	12186098 - UPDATED PDM ATTRIBUTES	215046	MFL	MFL	DLB
28JAN02	R	04	-	-	ALL PARTS - ADDED "TYPE" TO CHART	220131	FRB	FRB	AK
29NOV05	R	05	-	-	ALL PARTS - UPDATED PDM ATTRIBUTES	274579	CJPC	PH	BB
10FEB06	R	06	-	-	12065398 - MAT'L SPEC WAS M3592002	277376	JTZ	FRB	EST
27FEB06	R	07	-	-	12186098 - REVISED INDEX FEATURE TO MAKE MODEL MATCH PART	277639	PH	PH	BB

DWP TYPE		PART DRAWING	
STYL	SEE CHART	DISTR CODE	D
UNLESS OTHERWISE SPECIFIED: DIMENSIONS ARE IN MILLIMETERS DIMENSIONS ENCLOSED IN () INDICATE REFERENCE DIMENSIONS AND NO TOLERANCE LIMITS ARE ESTABLISHED			
THIRD ANGLE PROJECTION			
DO NOT SCALE DRAWING DATA			
DELPHI DELPHI PACKARD ELECTRIC SYSTEMS WARREN, OH			
DRAWING NUMBER		12065399	
SCALE		5:1	
FRAME NO		2 OF 2	
SHEET NO		1 OF 1	
REV		R 07	
DATE			
BY			
CHKD			
APPV			
SUBSTANCES OF CONCERN AND RECYCLED CONTENT PER DELPHI 12045689			
DRAWING NAME		TAXI CONN F M/P 150	
DATE			
BY			
CHKD			
APPV			

15062399