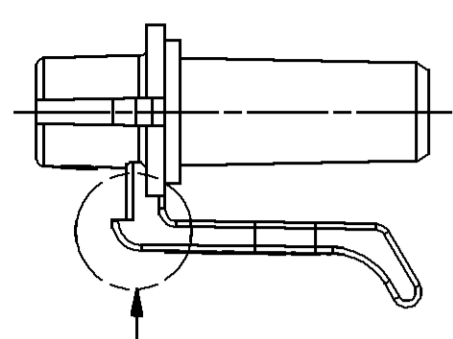
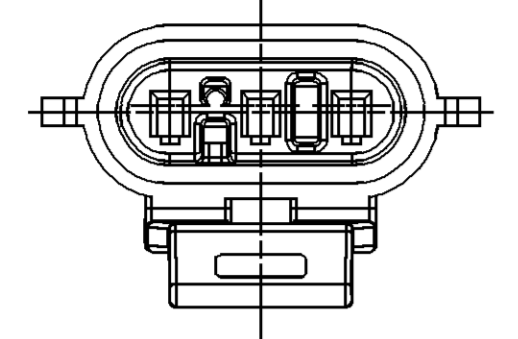


SYMBOL DEFINITION		MISSING SYMBOLS	
A DIMENSION WITHOUT AN INSPECTION REPORT SYMBOL DOES NOT REQUIRE INSPECTION. IT MAY BE CONTROLLED ON THE INDIVIDUAL COMPONENT DRAWING.	TOTAL NO OF INSPECTIONS REQUIRED	12	14 16
	LAST NO. USED		
		16	
		17	

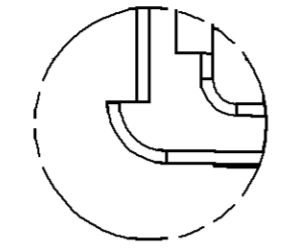
DWG STATUS				ZONE	REVISION HISTORY	AUTH	DR	APVD1	APVD2
DATE	STG	REV	N/P						
22JUL05	R	02	-	-	CLEARED REVISION COLUMN: 13532331 - RELEASED	269874	AKJ	AKJ	MJC
16FEO6	R	03	-	-	ALL PARTS - REMOVED SYMBOL #16, ADDED LABEL & ASSOCIATED DIM	277168	RMG	FRG	BDG
12MY06	R	04	-	-	ALL PARTS - UPDATED MODELS AND MATERIAL SPECIFICATIONS TO LATEST STANDARD	280071	RH	RH	BDG
12OC06	R	05	-	-	ALL PARTS - UPDATED PDM ATTRIBUTES	285374	JPH	JAA	BDG



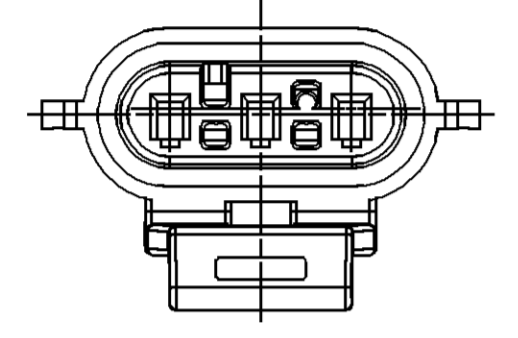
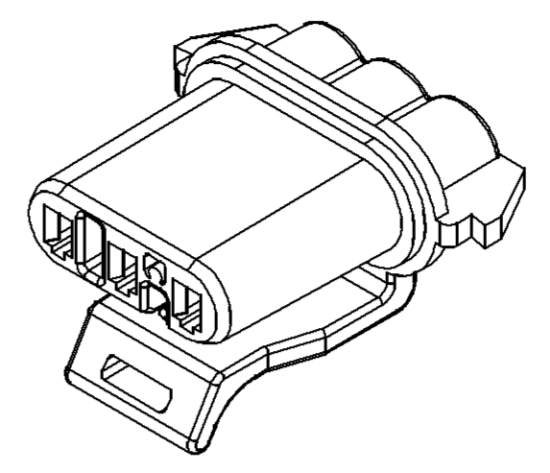
SEE DETAIL Y



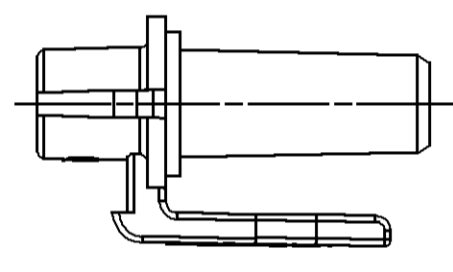
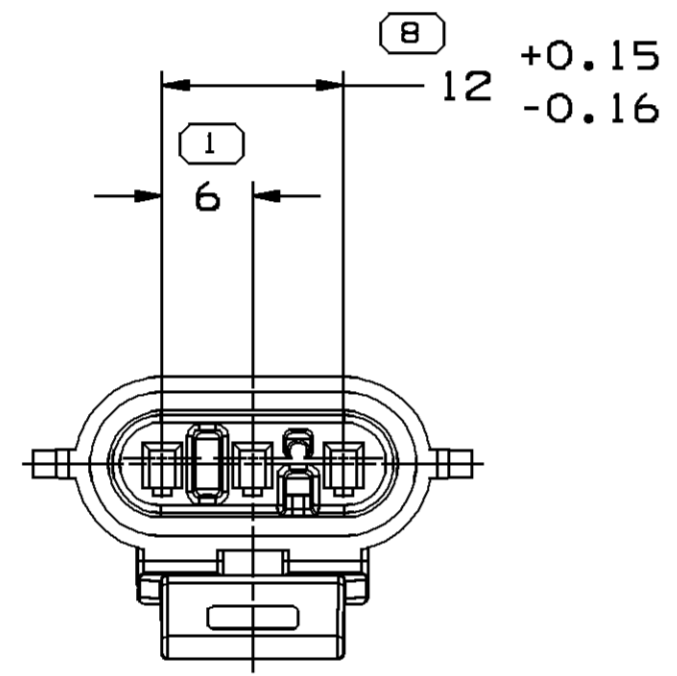
TYPE 102  
SAME AS TYPE 101  
EXCEPT AS SHOWN



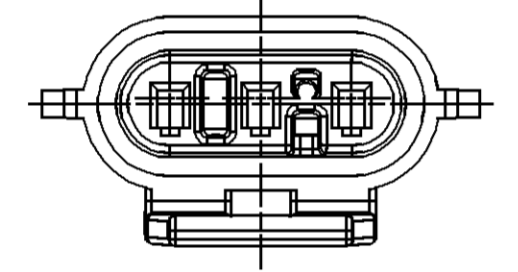
DETAIL Y  
SCALE 4:1  
TYPE 102, 103 & 104  
SAME AS TYPE 101  
EXCEPT AS SHOWN  
(2-PLCS) TYP



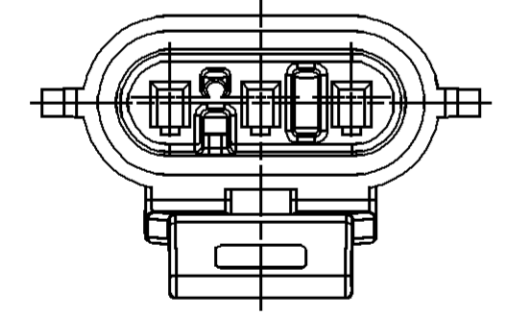
TYPE 103  
SAME AS TYPE 101  
EXCEPT AS SHOWN



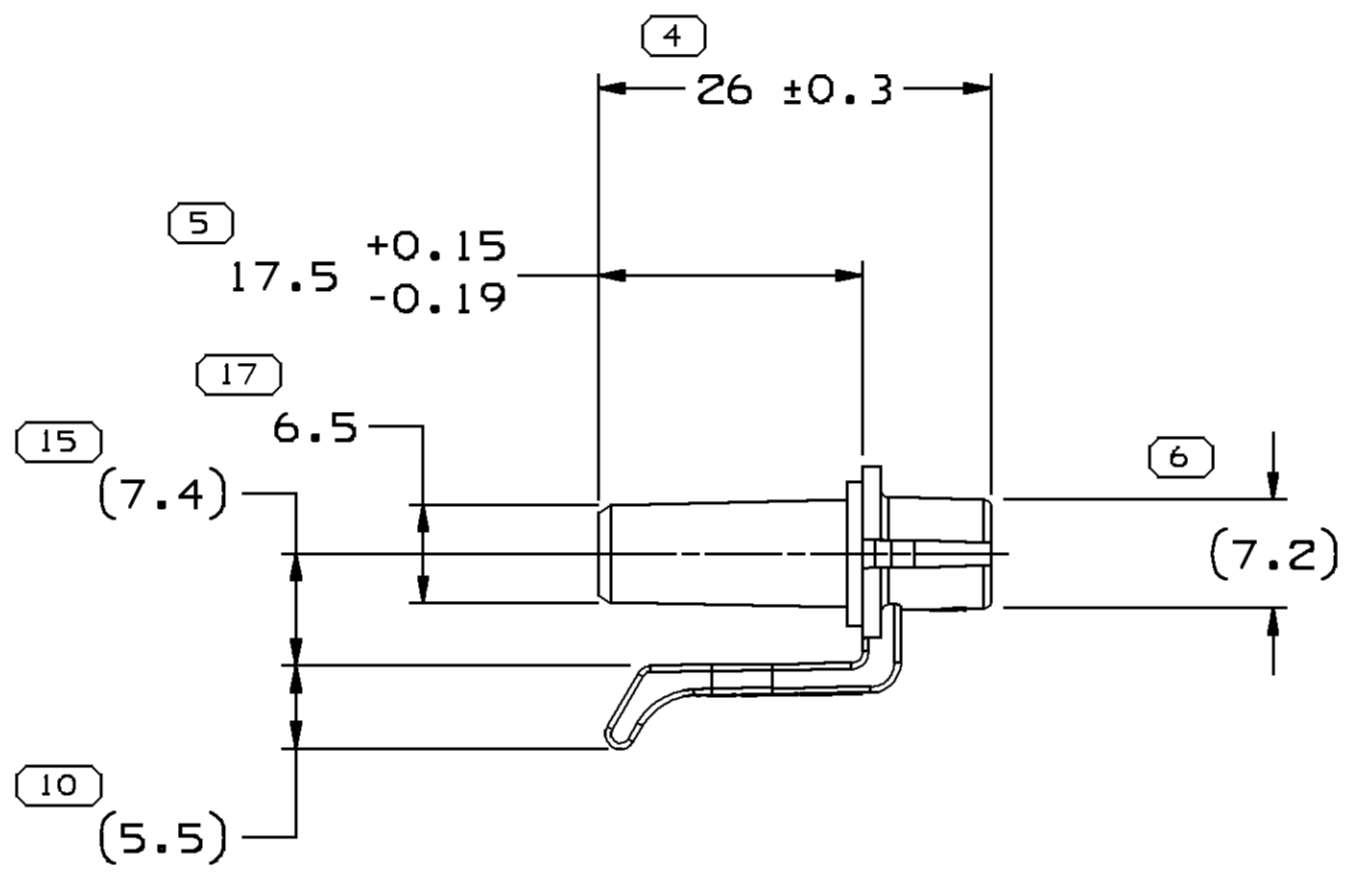
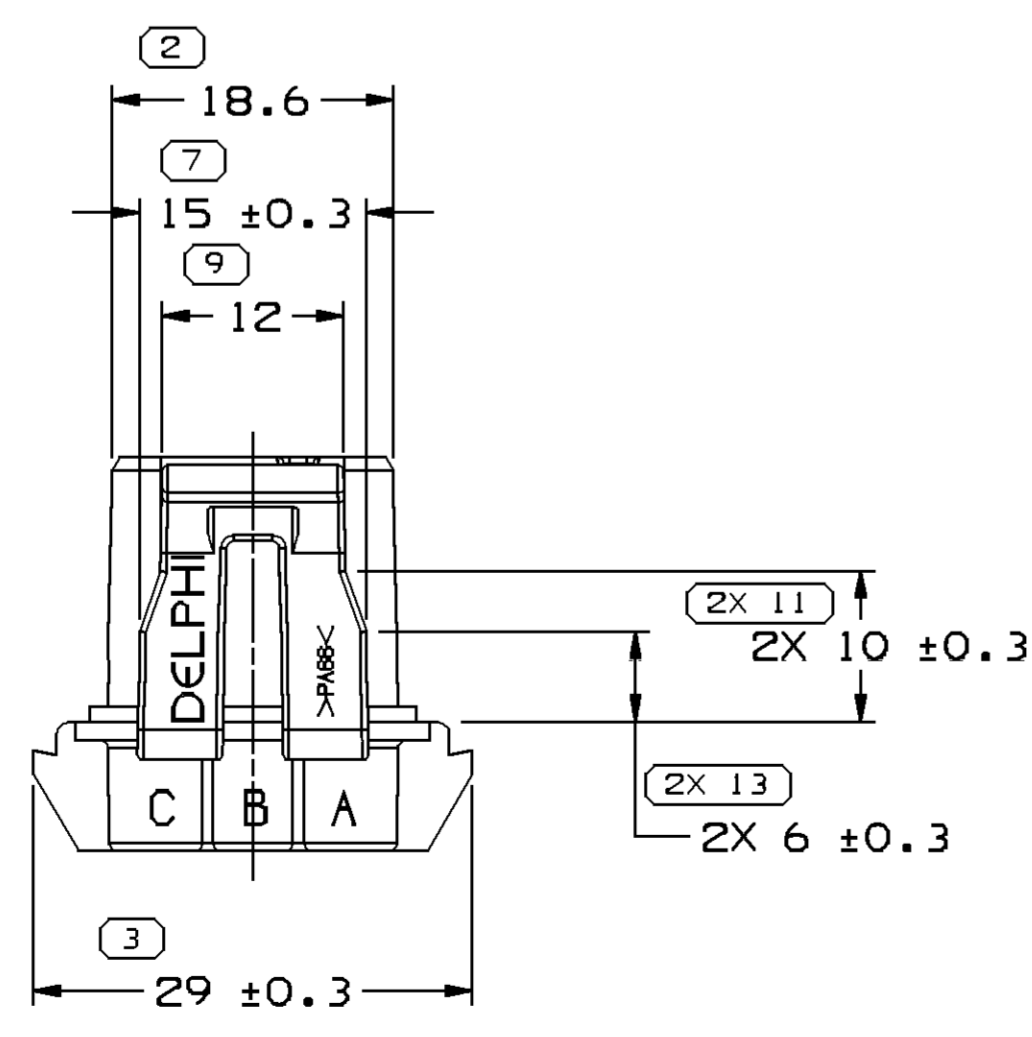
TYPE 104  
SAME AS TYPE 101  
EXCEPT AS SHOWN



TYPE 104  
SAME AS TYPE 101  
EXCEPT AS SHOWN



TYPE 105  
SAME AS TYPE 102  
EXCEPT AS SHOWN



NOTES

- UNLESS OTHERWISE SPECIFIED AND/OR INDICATED:  
DIMENSIONS ARE TO FACE OF VIEW SHOWN AND AUTOMATICALLY ROUNDED BY COMPUTER FOR INSPECTION (SEE MATH MODEL FOR PRECISE DIMENSIONS). FOR ALL OTHER DIMENSIONS NOT SHOWN BUT REQUIRED FOR TOOL BUILD, SEE MATH MODEL FOR PRECISE TOOL PATH DATA.
- MATERIAL RECYCLING CODE PER ISO 11469. (1)X(0.1) CHARACTERS TO BE LOCATED ON ANY EXTERIOR SURFACE. OPTIONAL CONSTRUCTION FOR EXISTING TOOLING MAY BE NO RECYCLING CODE.
- REFERENCE MATING COMPONENTS OR EQUIVALENT:  
MATING DEVICE (SEE CHART)
- THIS PART ACCEPTS THE FOLLOWING COMPONENTS OR EQUIVALENT:  
CAVITIES ACCEPT 12048074 TERMINAL OR EQUIVALENT.  
SECONDARY TERMINAL LOCK 12052845  
CONNECTOR SEAL 12052842  
CABLE SEAL 12048086
- (2)X(0.1) DELPHI CORPORATE BRAND TO BE LOCATED ON ANY EXTERIOR SURFACE, PREFERABLY VISIBLE AT FINAL ASSEMBLY. OPTIONAL CONSTRUCTION FOR EXISTING TOOLING MAY BE "PED".

PART NO	REV	N/P	STATUS	TYPE	MATERIAL SPECIFICATION AND COLOR	MATING DEVICE	VOLUME
13532331	01	AC	-	105	M2965002 PA6T/61/66 HS IM BLK	DELCO - 16165993	2.593
15394446	01	AD	-	104	M3592001 PA66 HS IM-BLK		2.484
15324036	A4	-	-	101	M3586001 PA46 HS IM-NAT	CRANK SHAFT SENSOR	2.566
12146120	C5	-	-	103	M3592010 PA66 HS IM-BRN	CAM SENSOR	2.614
12129945	B5	-	-	102	M3592025 PA66 HS IM-GRA MD	DELCO - 16165993	2.593
12059596	G4	-	-	101	M3592001 PA66 HS IM-BLK	HATACHI GE207284	2.566

DIMENSIONAL RANGE (MM)		CHART ET	
FROM	TO	FROM	TO
> 0	> 20	> 70	> 100
> 20	> 30	> 100	> 150
> 30	> 70	> 150	> 200
> 70	> 100	> 200	> 250
> 100	> 150	> 250	> 300
> 150	> 200	> 300	> 400

TOLERANCE UNLESS OTHERWISE SPECIFIED  
 ±0.15 | ±0.2 | ±0.3 | ±0.4 | ±0.5 | ±0.6 | ±0.8 | ±1 | ±1.2  
 ANGULAR TOLERANCE ±2°

PART DRAWING	
STYLE	
VOLUME (QP)	SEE CHART
DISTR CODE	D
UNLESS OTHERWISE SPECIFIED THIS DOCUMENT IS IN ACCORDANCE WITH ASME Y14.5M-1994 AS AMENDED BY THE 3M GLOBAL DIMENSIONING AND TOLERANCING ADDENDUM-2001. SEPARATE PATTERNS OF FEATURES MAY BE DATED SEPARATELY REGARDLESS OF DATUM REFERENCES.	
ALL DIMENSIONS ARE IN MILLIMETERS	
THIRD ANGLE PROJECTION	DO NOT SCALE USE MATH DATA
UNIGRAPHICS	

**DELPHI**  
 DELPHI PACKARD ELECTRIC SYSTEMS  
 WARREN, OH

DR	DATE
APVD1 R. VILLANUEVA	28NO00
APVD2 R. VILLANUEVA	28NO00
APVD3 G. MACIAS	04DE00
APVD4	
APVD5	

SUBSTANCES OF CONCERN AND RECYCLED CONTENT PER DELPHI 10949001

MATERIAL SEE CHART

DRAWING NAME  
TAXI CONN F M/P 150 SLD

DRAWING NUMBER  
12129957

SIZE	SCALE	FRAME NO	SHEET NO	STG	REV	N/P
A1	2:1	1 OF 1	1 OF 1	R	05	-