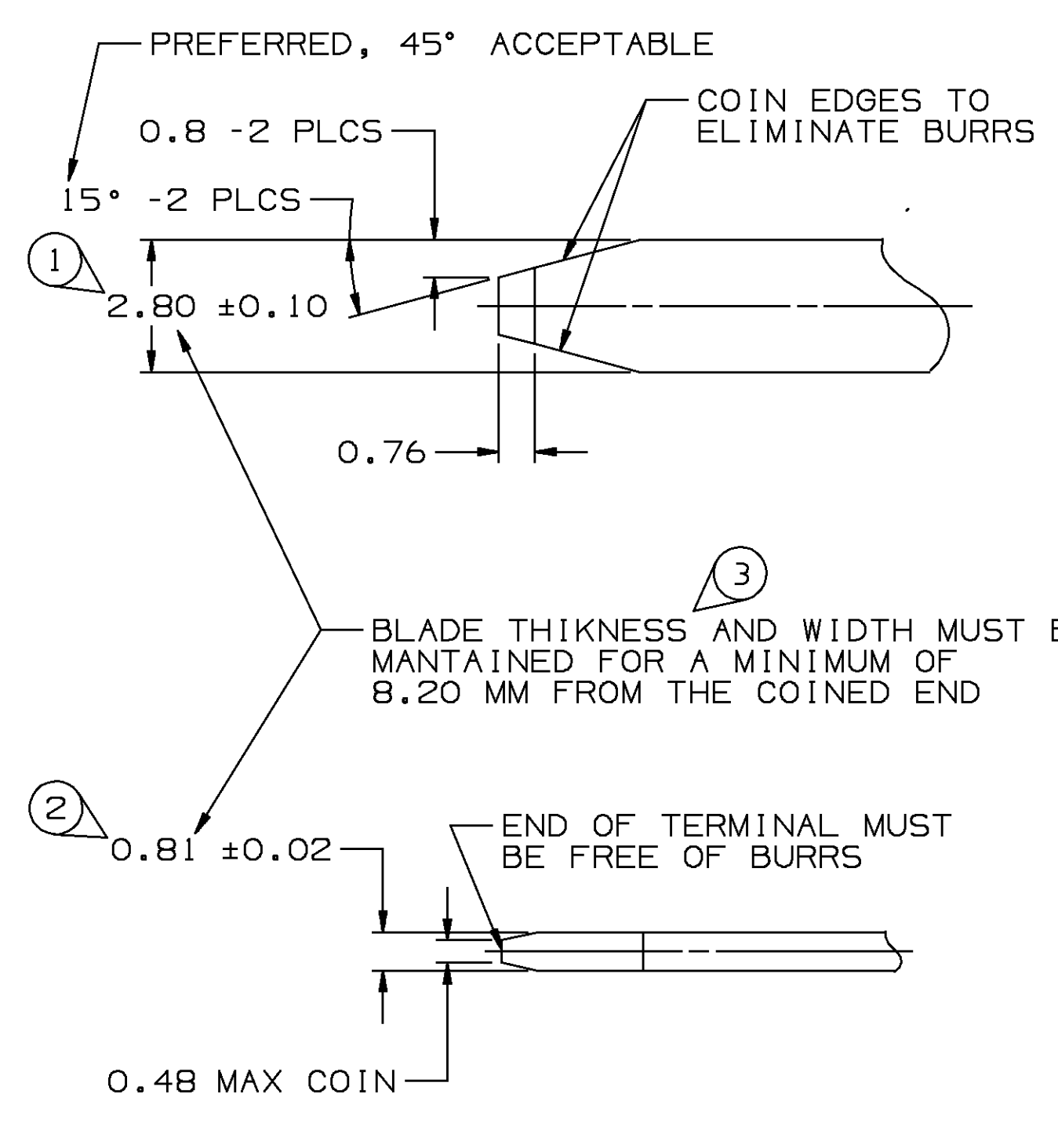


PACKARD ELECTRIC DIVISION
GENERAL MOTORS CORPORATION
WARREN, OHIO



MATERIAL SPECIFICATIONS

RECOMMENDED
 BASE METAL - CDA-210, GILDING, EXTRA SPRING TEMPER
 PLATING - 0.0050 ± 0.0025 MM THICK TIN

MINIMUMS
 ELECTRICAL CONDUCTIVITY - > 20% IACS AT 20°C. USE OF A MATERIAL WITH CONDUCTIVITY < 20% IACS MUST BE APPROVED BY PACKARD ELECTRIC MATERIALS ENGINEERING.

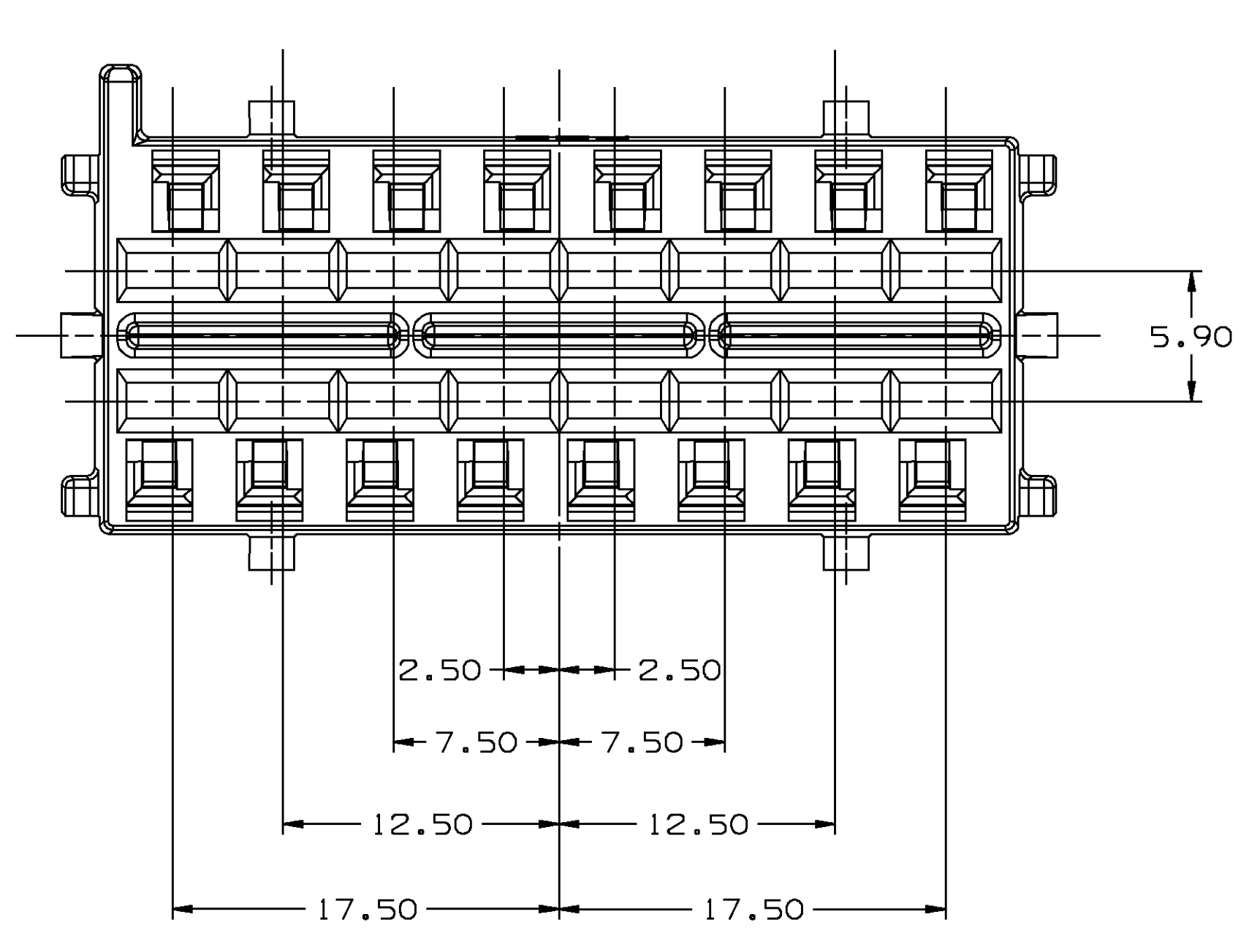
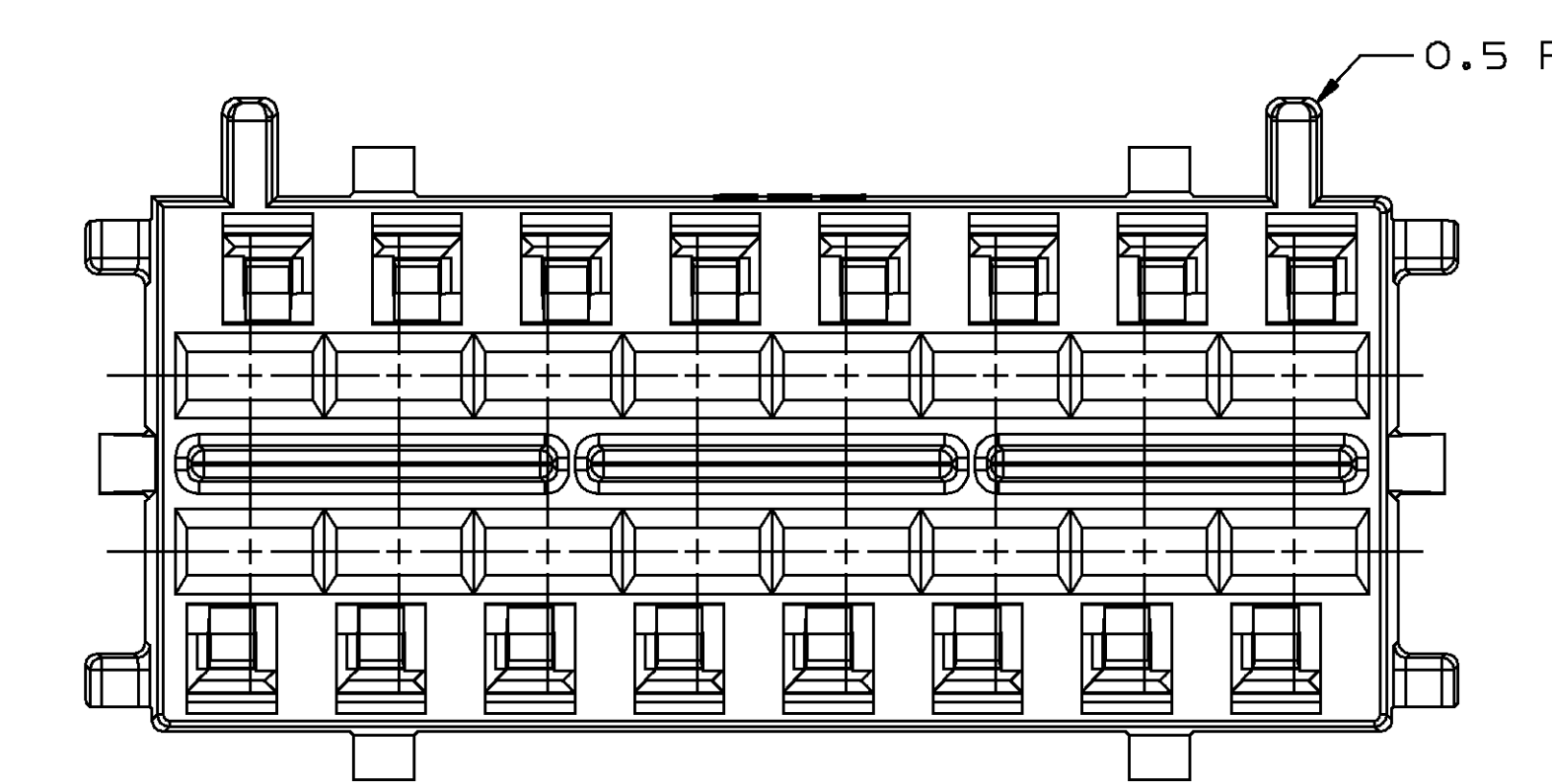
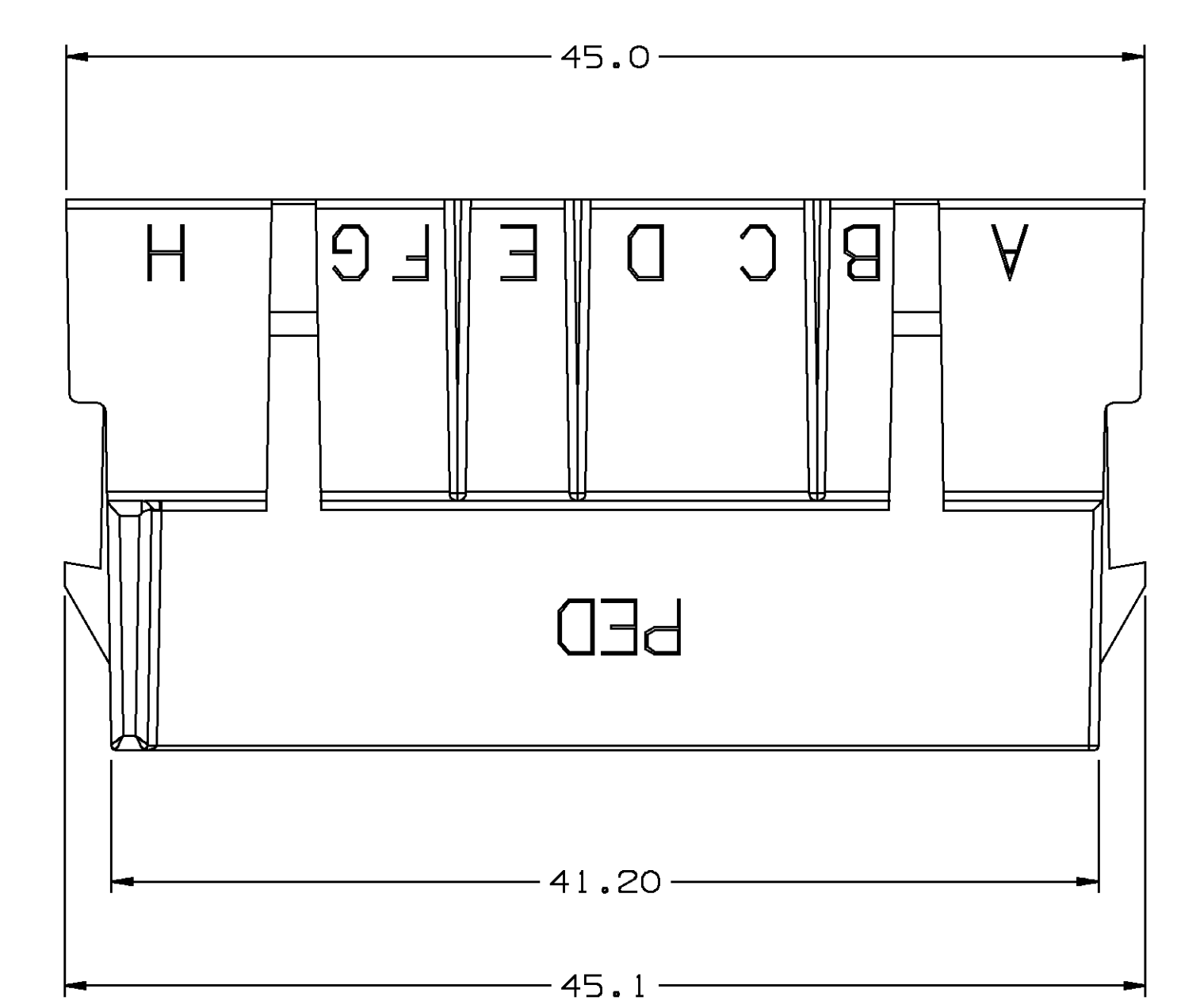
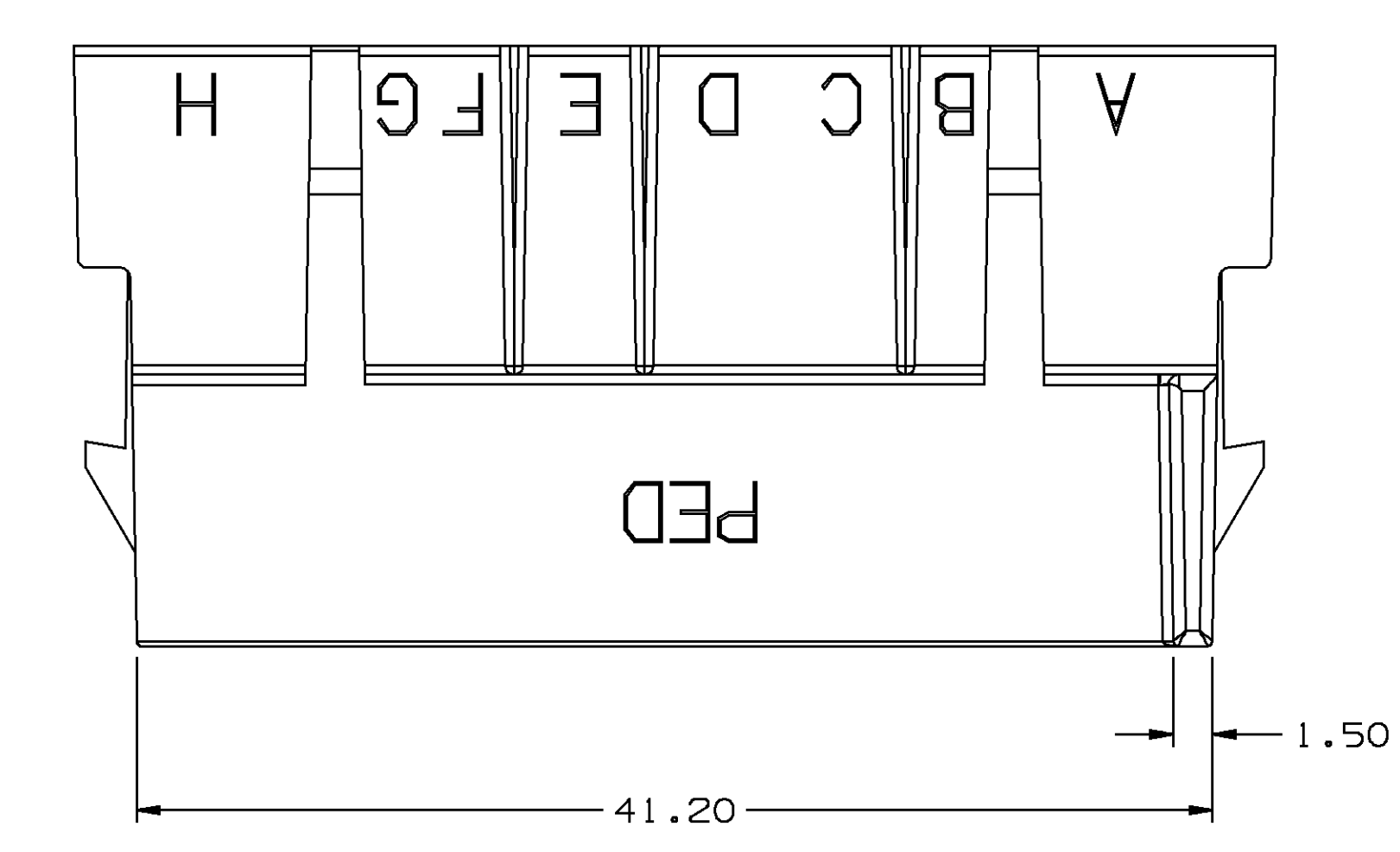
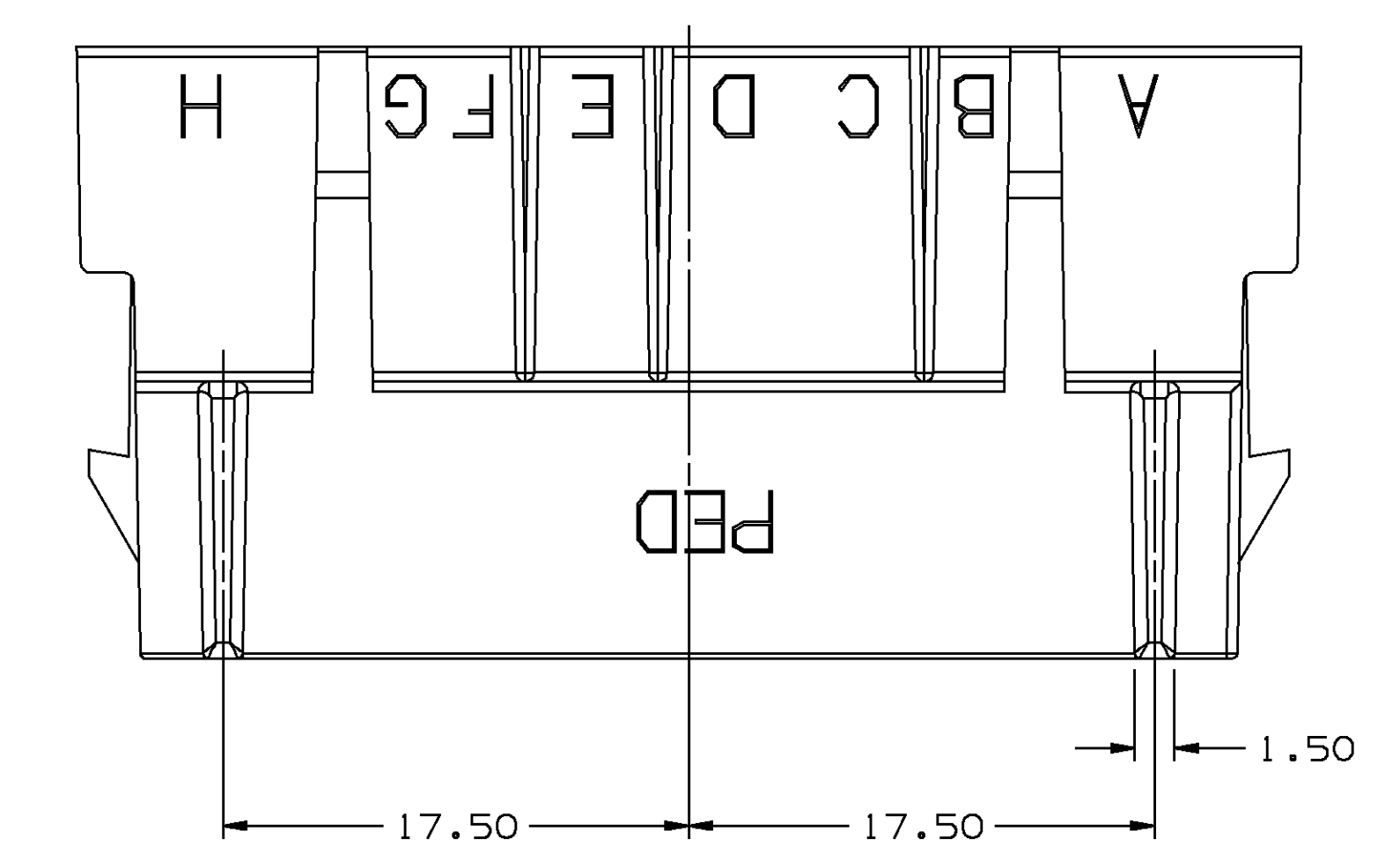
TENSILE STRENGTH - 407 MPa

PLATING - FOR LOW ENERGY (< 5 V) AND NON-PASSENGER COMPARTMENT POWER CIRCUITS, 0.0050 ± 0.0025 MM THICK TIN. FOR MATERIALS CONTAINING 10% OR MORE ZINC, AN UNDERPLATE OF COPPER 0.0050 ± 0.0025 MM THICK IS REQUIRED.

BLADE THICKNESS
 UNPLATED = 0.813 ± 0.025
 TIN PLATED = 0.823 ± 0.030

MATING BLADE INFORMATION

SCALE 8:1

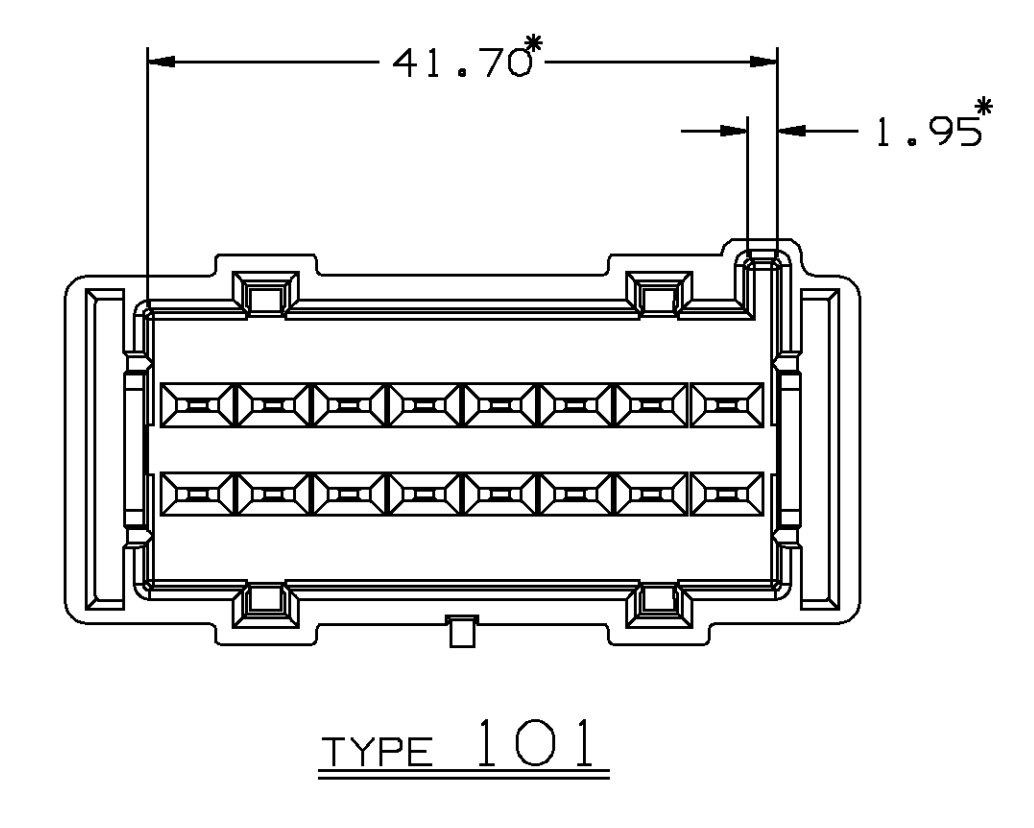
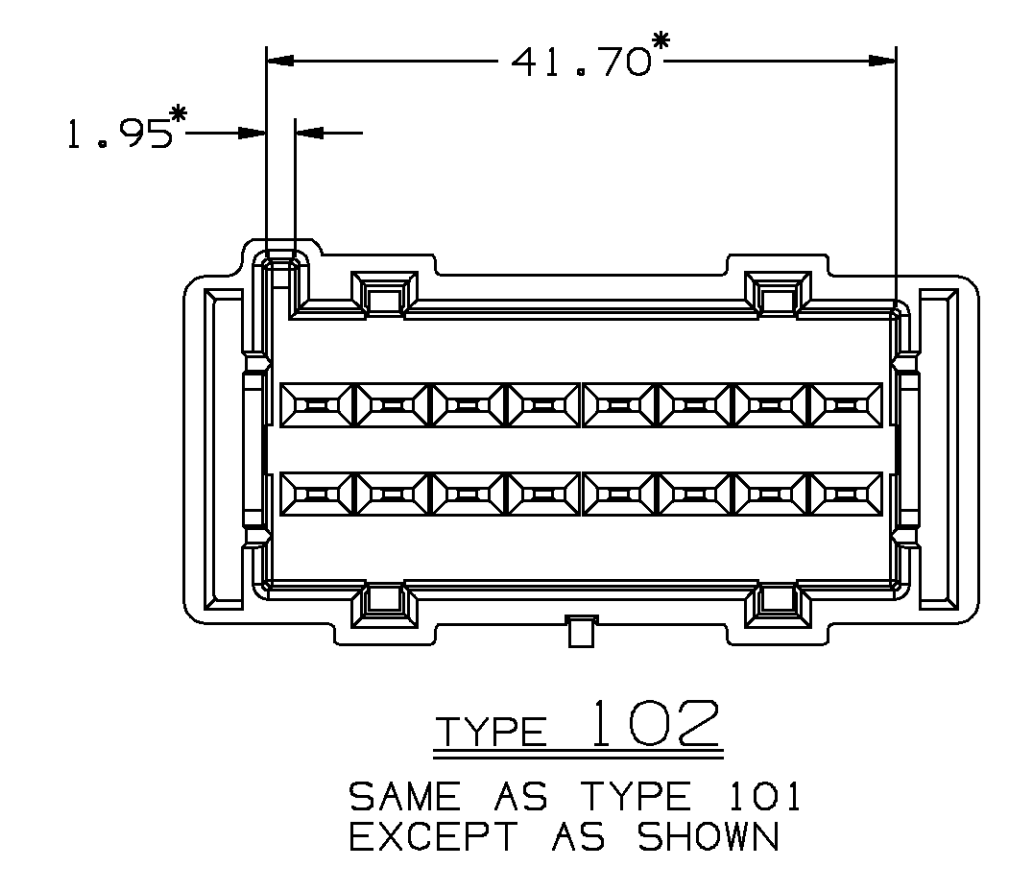
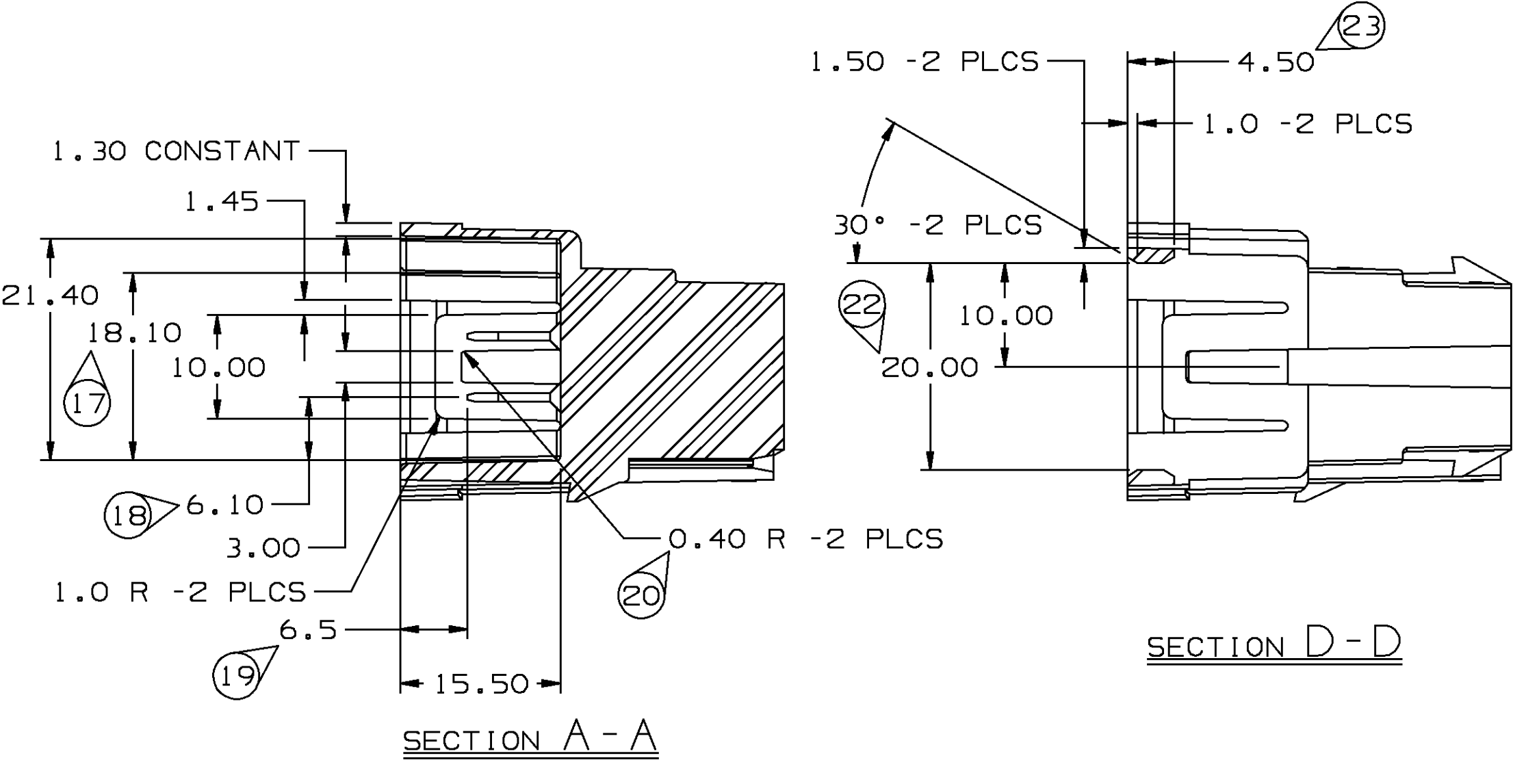
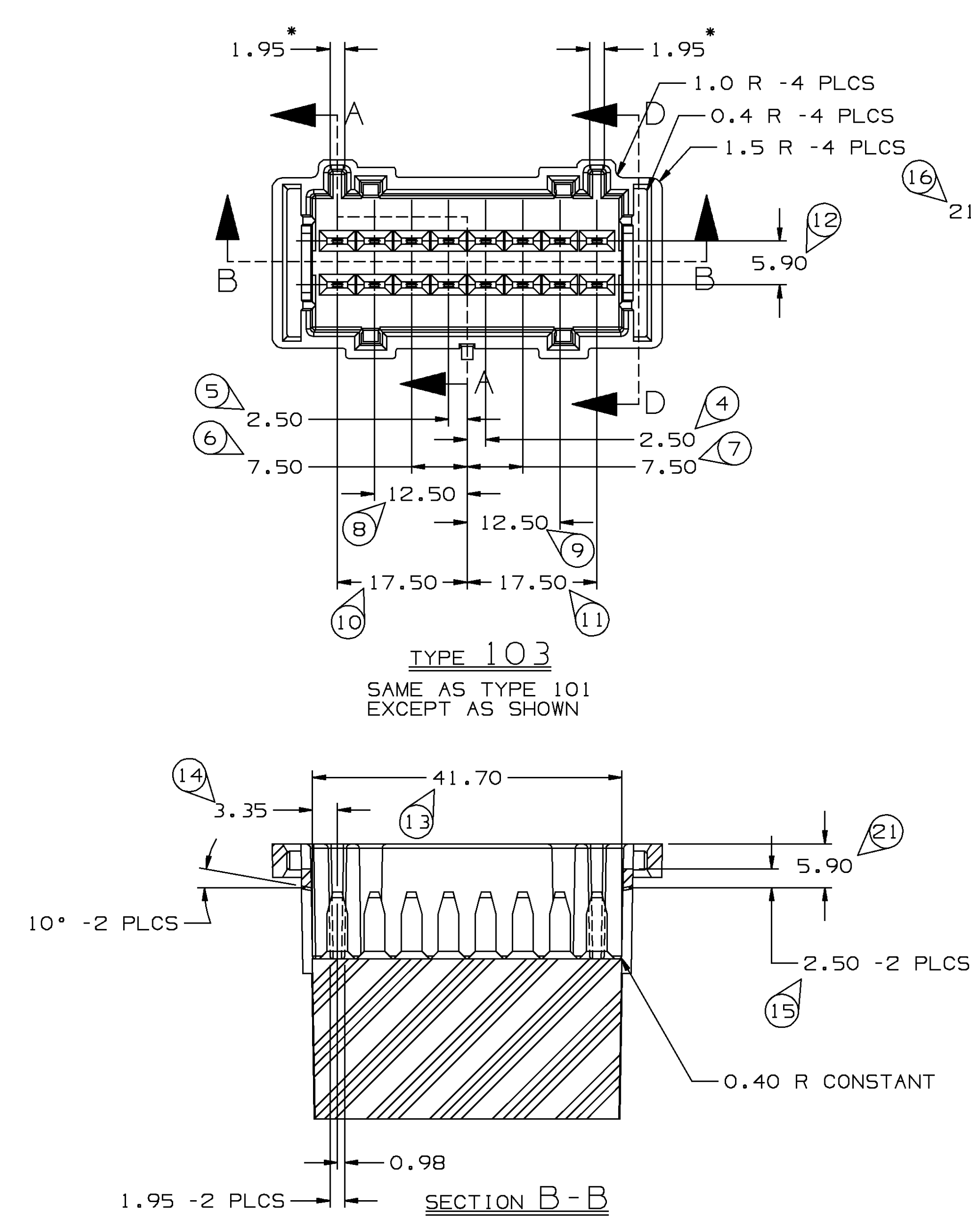


TYPE 103
 SAME AS TYPE 101 EXCEPT AS SHOWN

TYPE 102
 SAME AS TYPE 101 EXCEPT AS SHOWN

TYPE 101

PART NO	REV	STATUS	TYPE	MATERIAL SPEC & COLOR	MATING CONN
12129432	D		102	PPE-GRA	12129428
12129431	D		103	PPE-BLK	12129427
12129430	D		101	PPE-WHT	12129429



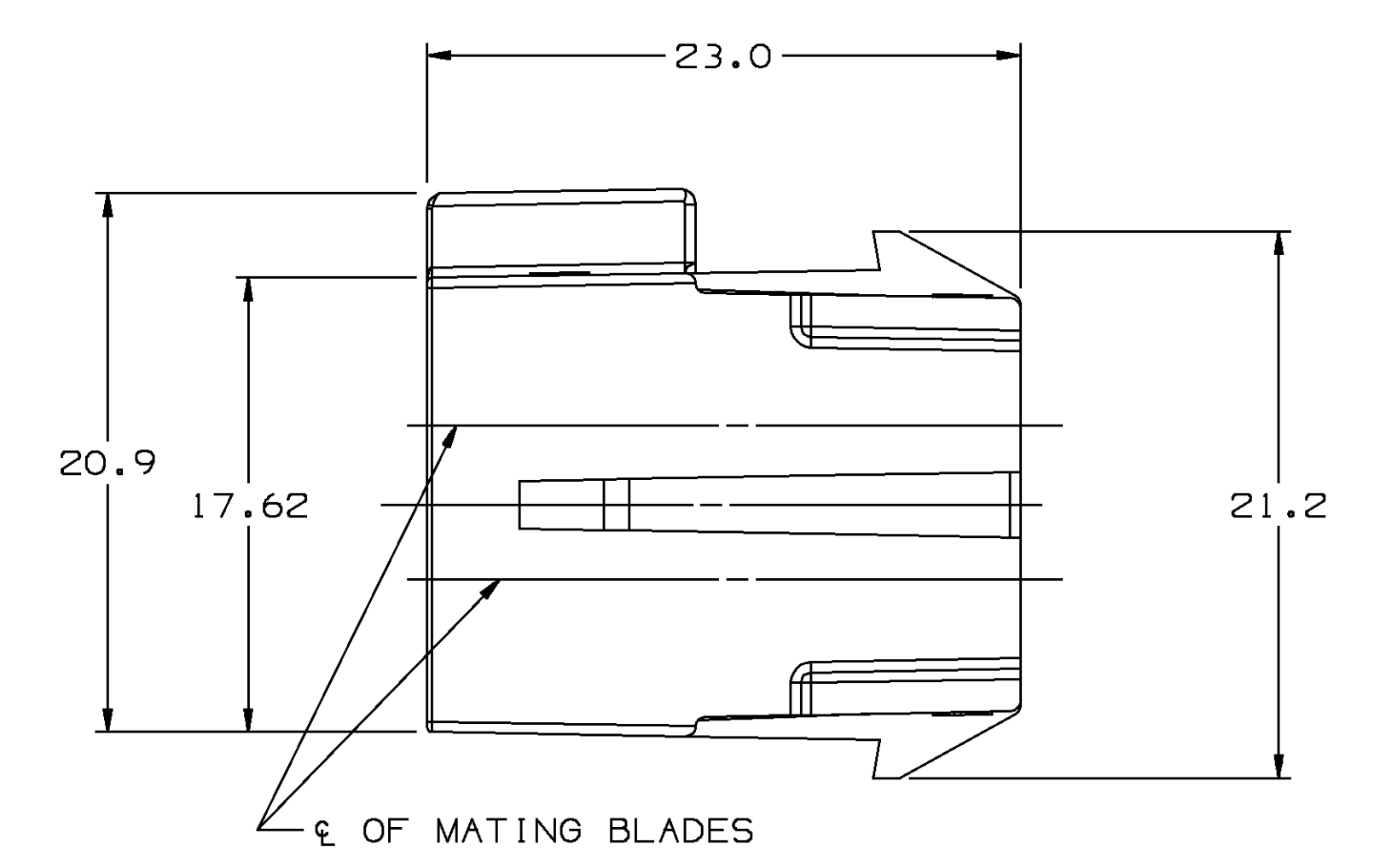
TYPE 102
 SAME AS TYPE 101 EXCEPT AS SHOWN

TYPE 101

- NOTES:**
- UNLESS OTHERWISE SPECIFIED AND/OR INDICATED: DIMENSIONS ARE TO FACE OF VIEW SHOWN AND AUTOMATICALLY ROUNDED BY COMPUTER FOR INSPECTION. (SEE MATH MODEL FOR PRECISE DIMENSION) ALL RADII 0.40 DRAFT IS 1° ON ALL OUTSIDE SURFACES
 - RECOMMENDED MATERIAL - NYLON 6.
 - WHEN USING THIS INFORMATION FOR A NEW DESIGN, REQUEST THE LATEST COPY OF THIS PRINT FROM PACKARD ELECTRIC DIVISION.
 - "O" DENOTES DIMENSIONS AND CHARACTERISTICS THAT ARE IMPORTANT TO THE FUNCTION AND/OR PROCESSING OF THE PART. IT DOES NOT NECESSARILY INDICATE AN SPC DIMENSION. THIS DRAWING HAS 23 SNOWCONES.
 - CLEARANCE ABOVE THE SHROUD MUST BE MAINTAINED FOR 30 MM FOR THE MATING CONNECTOR.
 - "*" DIMENSION MEASURED AT THE BOTTOM OF DRAFT.

MATING CONNECTOR INFORMATION

SCALE 2:1



- NOTES:**
- ALL RADII 0.40 UNLESS OTHERWISE SPECIFIED.
 - DIMENSIONS ARE TO FACE OF VIEW SHOWN AND AUTOMATICALLY ROUNDED BY COMPUTER FOR INSPECTION. (SEE MATH MODEL FOR PRECISE DIMENSION)
 - 1° DRAFT ON ALL OUTSIDE SURFACES, UNLESS OTHERWISE SPECIFIED.
 - CAVITIES ARE IDENTICAL, EXCEPT AS SHOWN.
 - SECONDARY TERMINAL LOCKS ARE IDENTICAL, EXCEPT AS SHOWN.
 - CAVITIES TO ACCEPT TERMINAL 12084995 OR EQUIVALENT.
 - CONNECTOR TO ACCEPT TWO 12129774 C.P.A. (CONNECTOR POSITION ASSURANCE) LOCKS.
 - CONNECTOR TO ACCEPT TWO 12129260 TERMINAL POSITION ASSURANCE LOCKS.
 - MAX INSULATION CRIMP MUST BE LESS THAN 3.50 MM HIGH AND 4.05 MM WIDE.
 - MATING CONNECTOR 12129429 OR EQUIVALENT.
 - THIS PART IS NOT CONTROLLED FOR AUTOMATIC FEEDING.
 - SEALING CODE 0.

DATE	SYM	REVISION RECORD	AUTH	DR	CK
22JUL96		ALL PARTS - CLEARED REV			
		COLUMN, REDRWN & REMOVED			
		RIBS (5 PLCS) - NO REV			
		UPDATE REQ'D		173821001MVA	
22JUL96		ALL PARTS - 0.5 R MAX			
		WAS 0.4 R MAX - NO REV			
		UPDATE REQ'D		173830901MVA	

PART NO
1212 9783

PART NO
1212 9783

Utgaphis II		METRIC	
THIRD ANGLE PROJECTION		DIMENSIONS ARE IN MILLIMETERS UNLESS OTHERWISE SPECIFIED	
TOLERANCE UNLESS OTHERWISE SPECIFIED		DECIMALS ANGULARS 2°	
ONE PLACE ± 0.3		TWO PLACE ± 0.15	
CODE NO 6900	QC	DES	DES
DWG DATE 29MY91	DRB ROBERTO	14AP92	
SCALE 4:1	CKB ROBERTO	14AP92	
REFERENCE NO 12129783 "AO" SIZE	APPR TOM MORELLO	24AP92	
MATERIAL SPEC	SEE CHART		
NAME	CONN 16F 280 ACT		
PART NUMBER	1212 9783		
SIZE	AO		