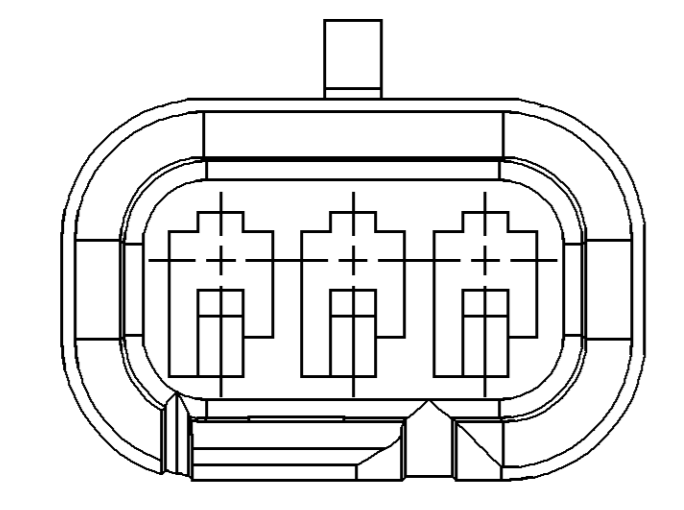
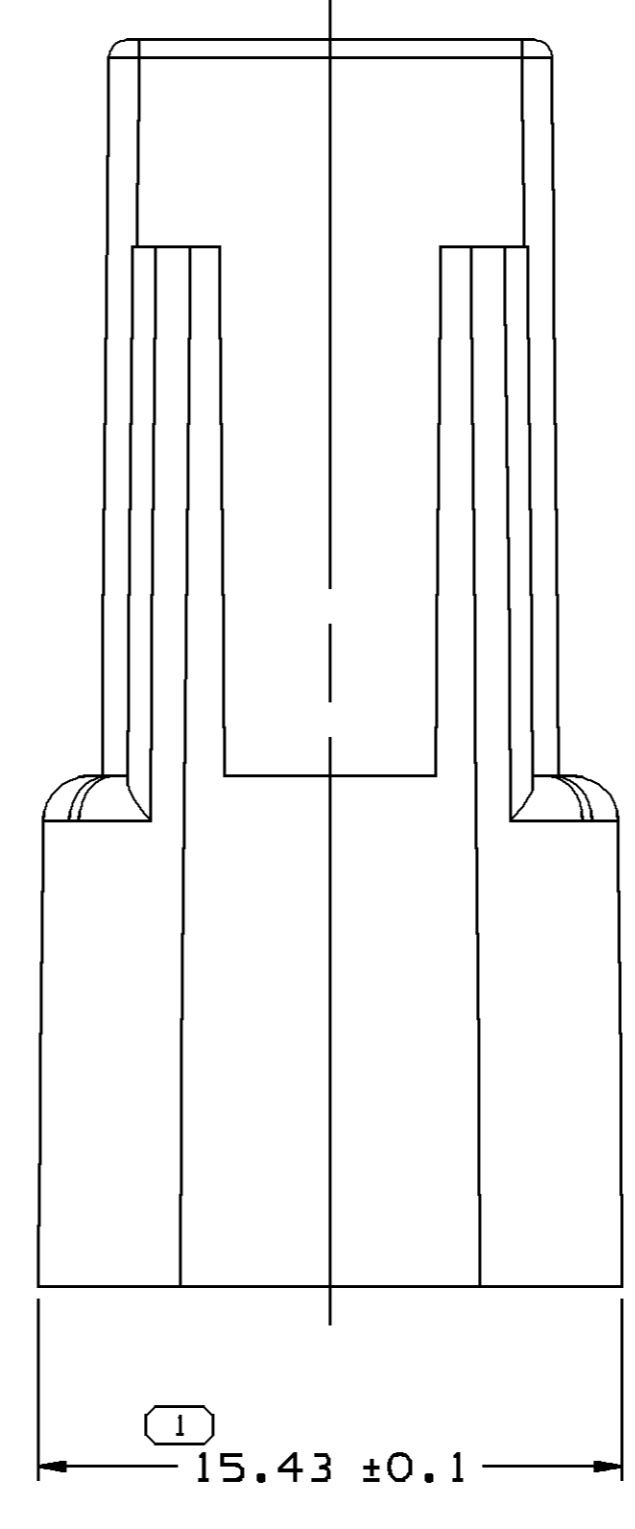
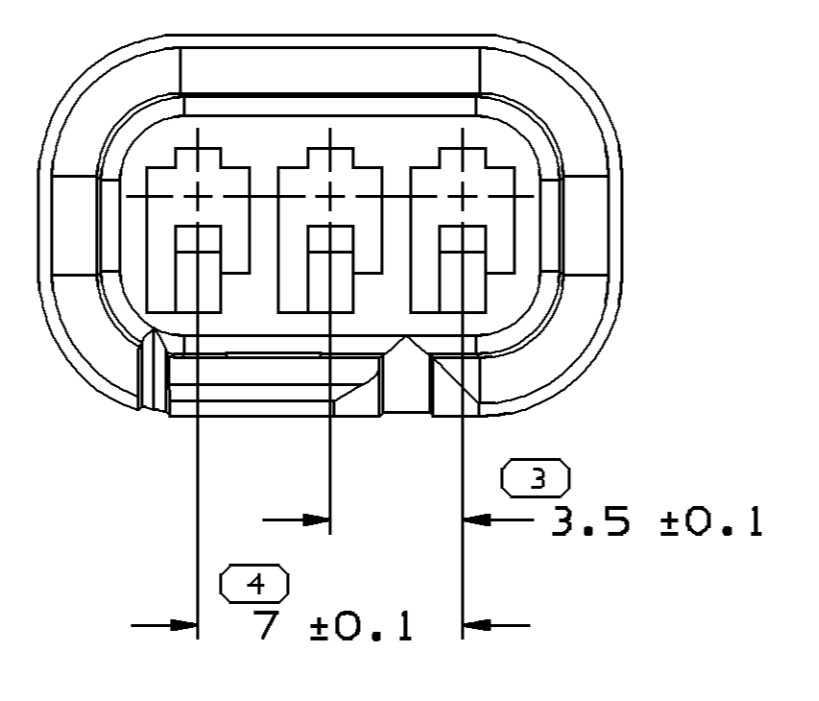


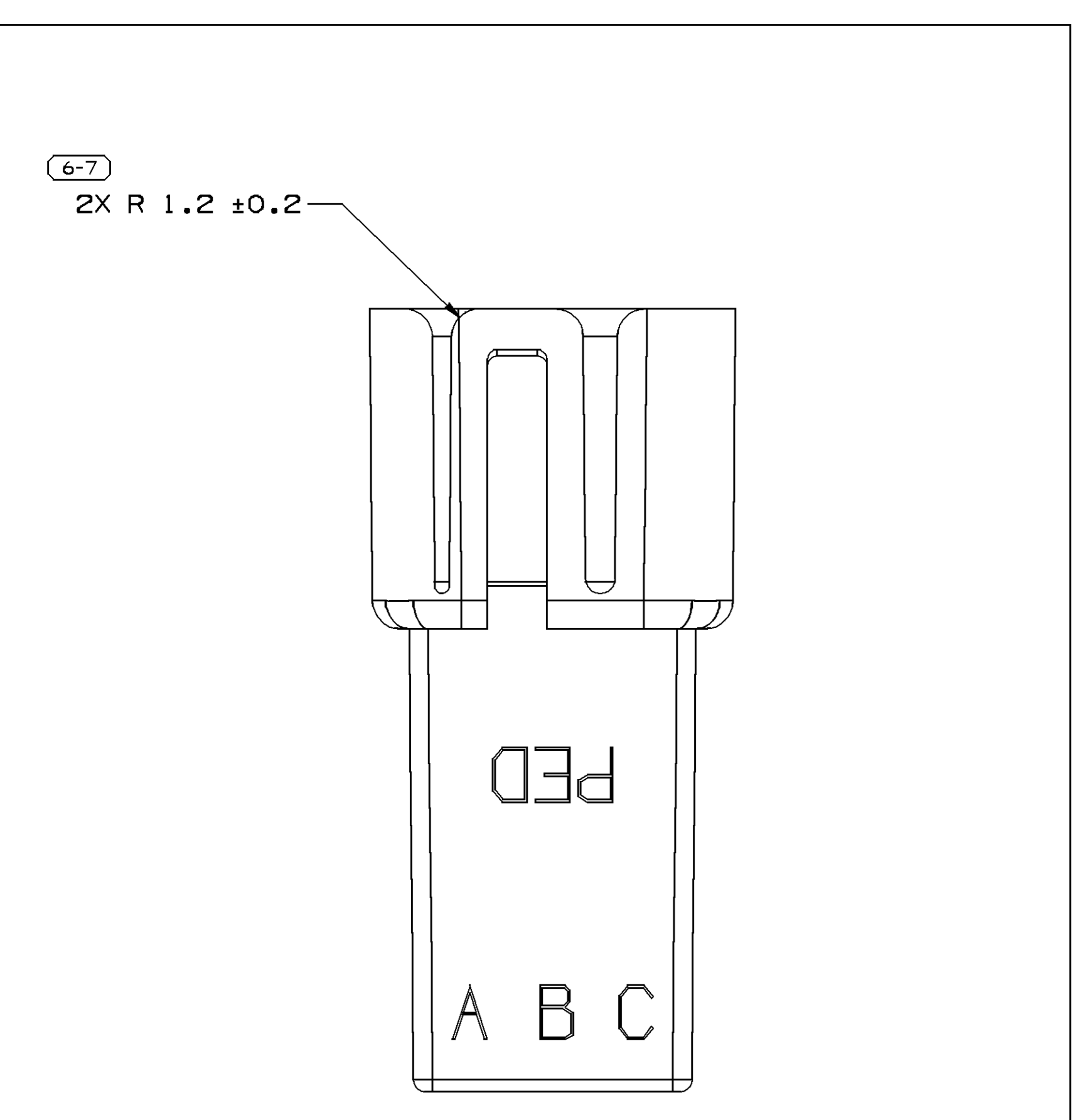
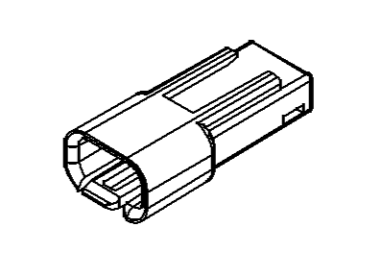
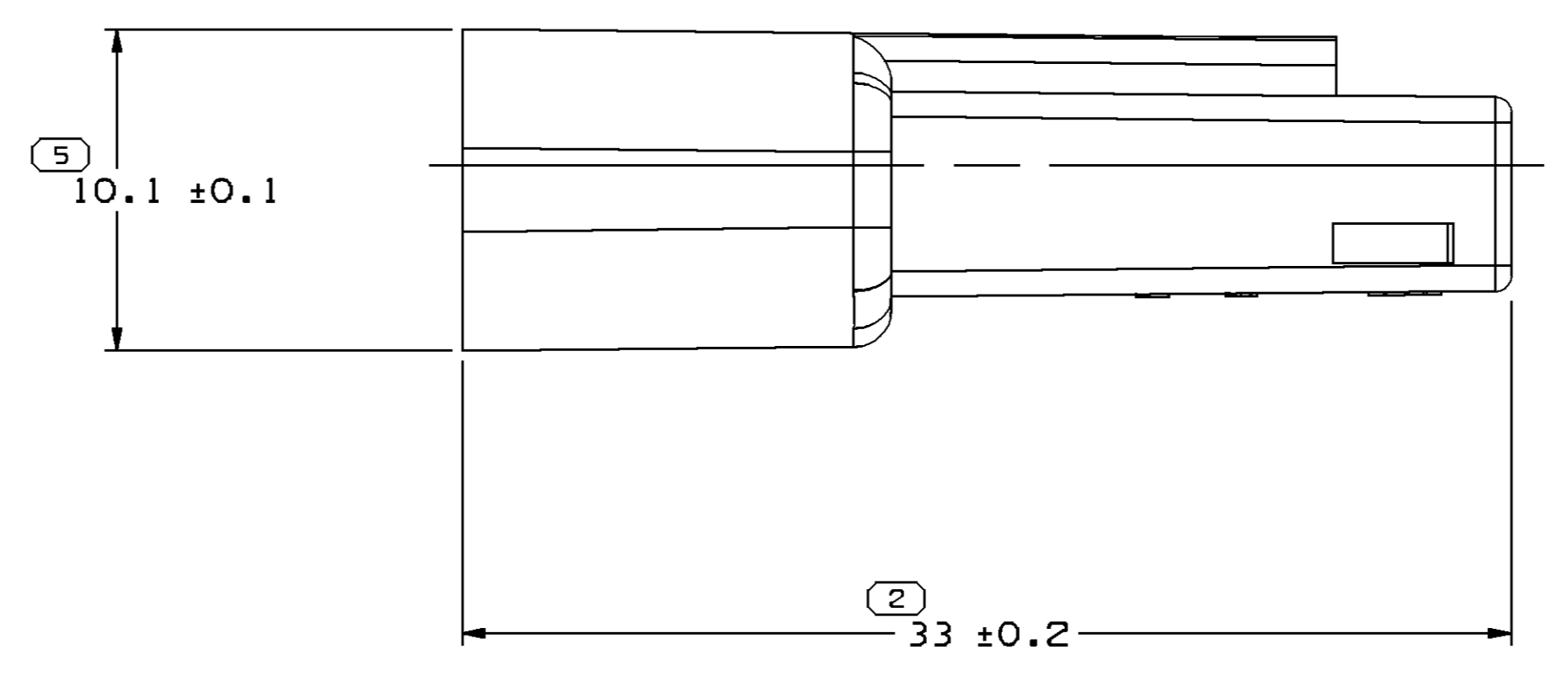
SYMBOL DEFINITION		MISSING NUMBERS		DWG STATUS				REVISION HISTORY				AUTH		DR		AP/VD		
THE NUMBER INSIDE THE SYMBOL () CORRESPONDS TO THE NUMBER ON THE INSPECTION REPORT FOR THIS DRAWING/PART NUMBER	TOTAL NO. OF SYMBOLS ON DRAWING	DATE	STG	REV	N/P	CHK	ZONE	DATE	STG	REV	N/P	CHK	ZONE	NO	BY	NO	BY	
	6	01JNO0	R	01	-	-	-	000009	6EB	01JNO0	-	-	-	000009	6EB	01JNO0	-	-
	7	12SE00	R	02	-	-	-	203268	RCH	12SE00	-	-	-	203268	RCH	12SE00	-	-
		04APO6	R	03	-	-	-	12065423	RMG	04APO6	-	-	-	278990	RMG	04APO6	-	-



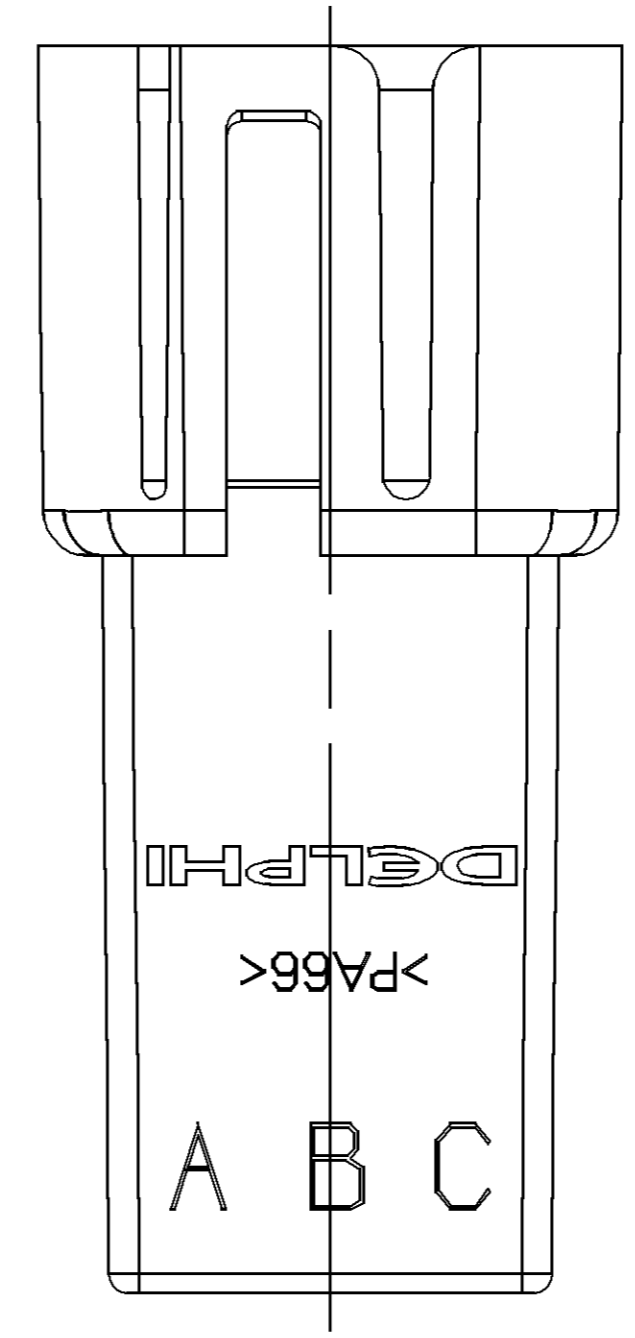
TYPE 102
SAME AS TYPE 101
EXCEPT AS SHOWN



TYPE 101



OPTIONAL CONSTRUCTION



- NOTES
- UNLESS OTHERWISE SPECIFIED AND/OR INDICATED: DIMENSIONS ARE TO FACE OF VIEW SHOWN AND AUTOMATICALLY ROUNDED BY COMPUTER FOR INSPECTION (SEE MATH MODEL FOR PRECISE DIMENSIONS). FOR ALL OTHER DIMENSIONS NOT SHOWN BUT REQUIRED FOR TOOL BUILD, SEE MATH MODEL FOR PRECISE TOOL PATH DATA.
 - MATING COMPONENTS OR EQUIVALENT: CONNECTOR SEE CHART
 - THIS PART ACCEPT THE FOLLOWING COMPONENTS OR EQUIVALENT: TERMINAL 12040993 MAX INSULATION CRIMP MUST BE LESS THAN 3 HIGH AND 2.65 WIDE SECONDARY TERMINAL LOCK 12047784 (1 PER CONNECTOR)
 - THIS PART IS NOT CONTROLLED FOR AUTOMATIC FEEDING.
 - THIS CONNECTOR WILL PASS THRU A Ø17 MIN HOLE
 - MATERIAL RECYCLING CODE PER ISO 11469. (1)(X)(0.1) RAISED CHARACTERS AS SHOWN TO BE LOCATED ON ANY EXTERIOR SURFACE. OPTIONAL CONSTRUCTION TO BE NO MATERIAL RECYCLING CODE.
 - (1)(X)(0.1) RAISED DELPHI CORPORATE BRAND TO BE LOCATED ON ANY EXTERIOR SURFACE, PREFERABLY VISIBLE AT FINAL ASSEMBLY. OPTIONAL CONSTRUCTION TO BE "PED" OR NO LOGO.

PART NO	REV	N/P	STATUS	TYPE	MATERIAL SPECIFICATION AND COLOR	MATING CONNECTOR	VOL CM ³
12191581	A3	-	102		M3592001 PA66 HS 1M-BLK	12047781	1.676
12065423	02	-	101		M3592024 PA66 HS 1M CRM	12065422	1.664
12047782	A3	-	101		M3592001 PA66 HS 1M-BLK	12047781	1.664

DIMENSIONAL RANGE (MM)		SHORT ET	
FROM	> TO	> TO	> TO
0	20	30	300
20	30	70	100
30	70	100	150
70	100	150	200
100	150	200	250
150	200	250	300
200	250	300	400
TOLERANCE UNLESS OTHERWISE SPECIFIED			
±0.15	±0.2	±0.3	±0.4
±0.5	±0.6	±0.8	±1
±1.2	ANGULAR TOLERANCE 2°		

DELPHI
DELPHI PACKARD ELECTRIC SYSTEMS
WYREN, OH

DR	DATE
APV01 G. ESTRADA	01JNO0
APV02 G. MACIAS	08JNO0
APV03 D. NAVARRO	09JNO0
APV04	
APV05	

THIS DOCUMENT IS IN ACCORDANCE WITH ASME Y14.5M-1994 AS MODIFIED BY THE IN-SITU DIMENSIONING AND TOLERANCE ADDENDUMS. SEPARATE RATINGS OF FEATURES MAY BE OBTAINED SEPARATELY PER DELPHI 10947001

ALL DIMENSIONS ARE IN MILLIMETERS

THIRD ANGLE PROJECTION

DO NOT SCALE

USE MATH DATA

SCALE: 5:1

FRAME NO: 1

SHEET NO: 1 OF 1

REV: R 03

DRAWING NAME: TAXI CONN M M/P 150

DRAWING NUMBER: 12065181