

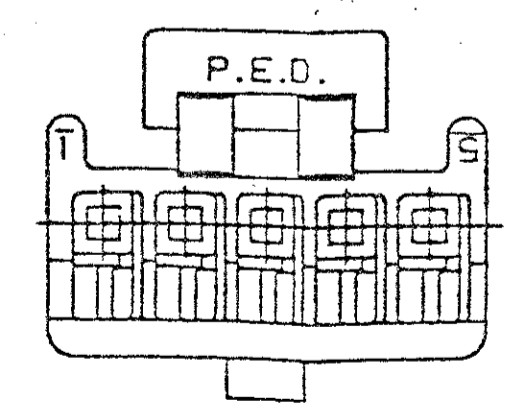
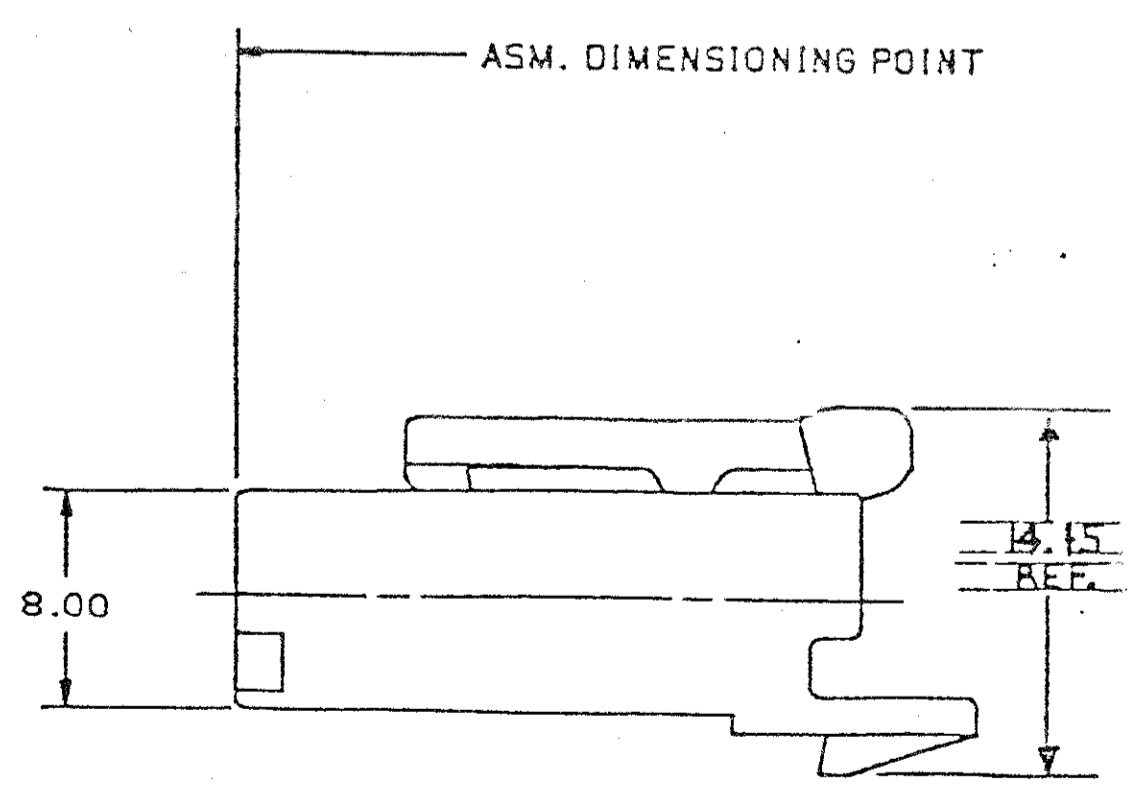
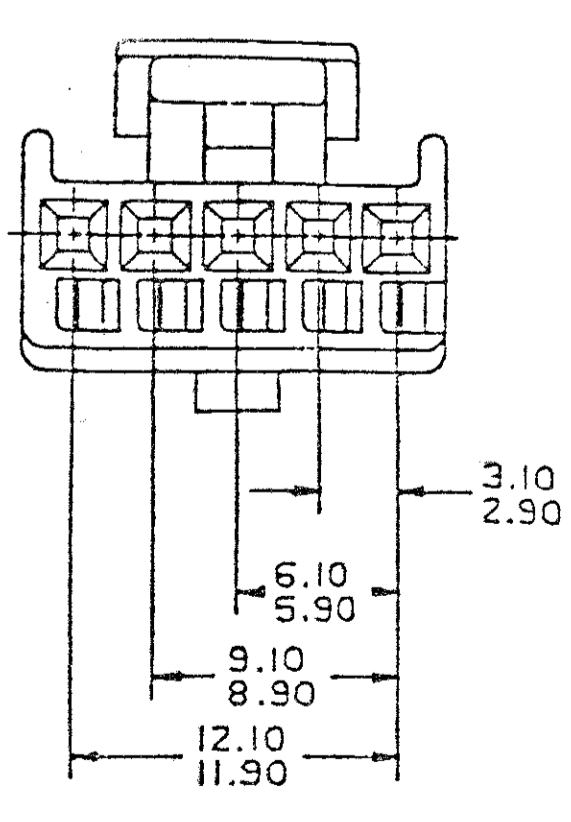
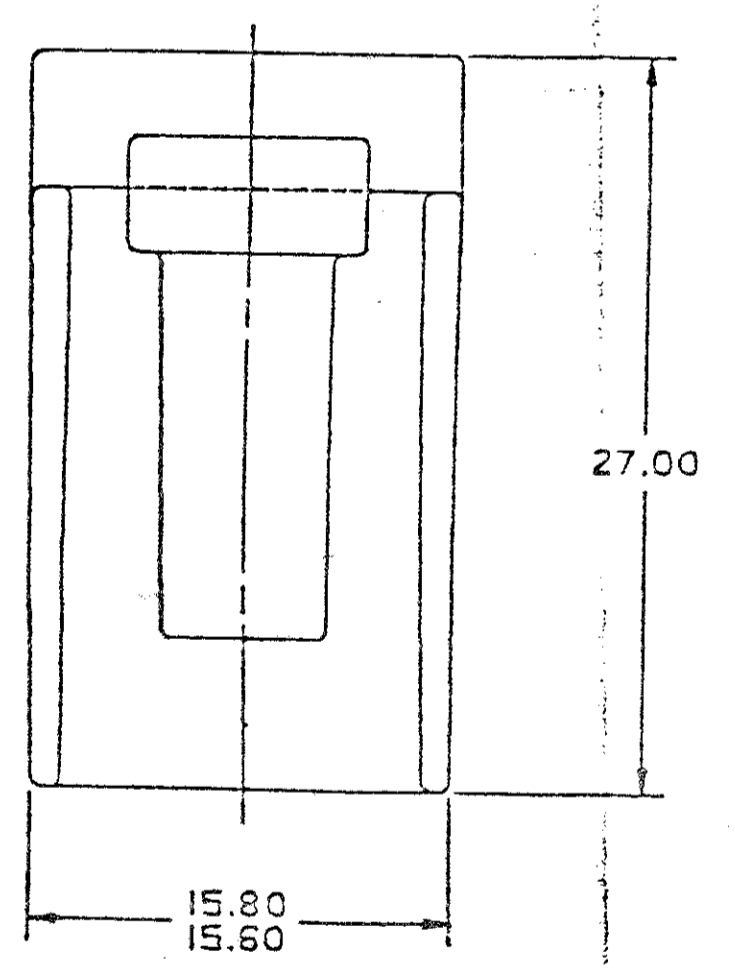
DO NOT SCALE

H
G
F
E
D
C
B
A

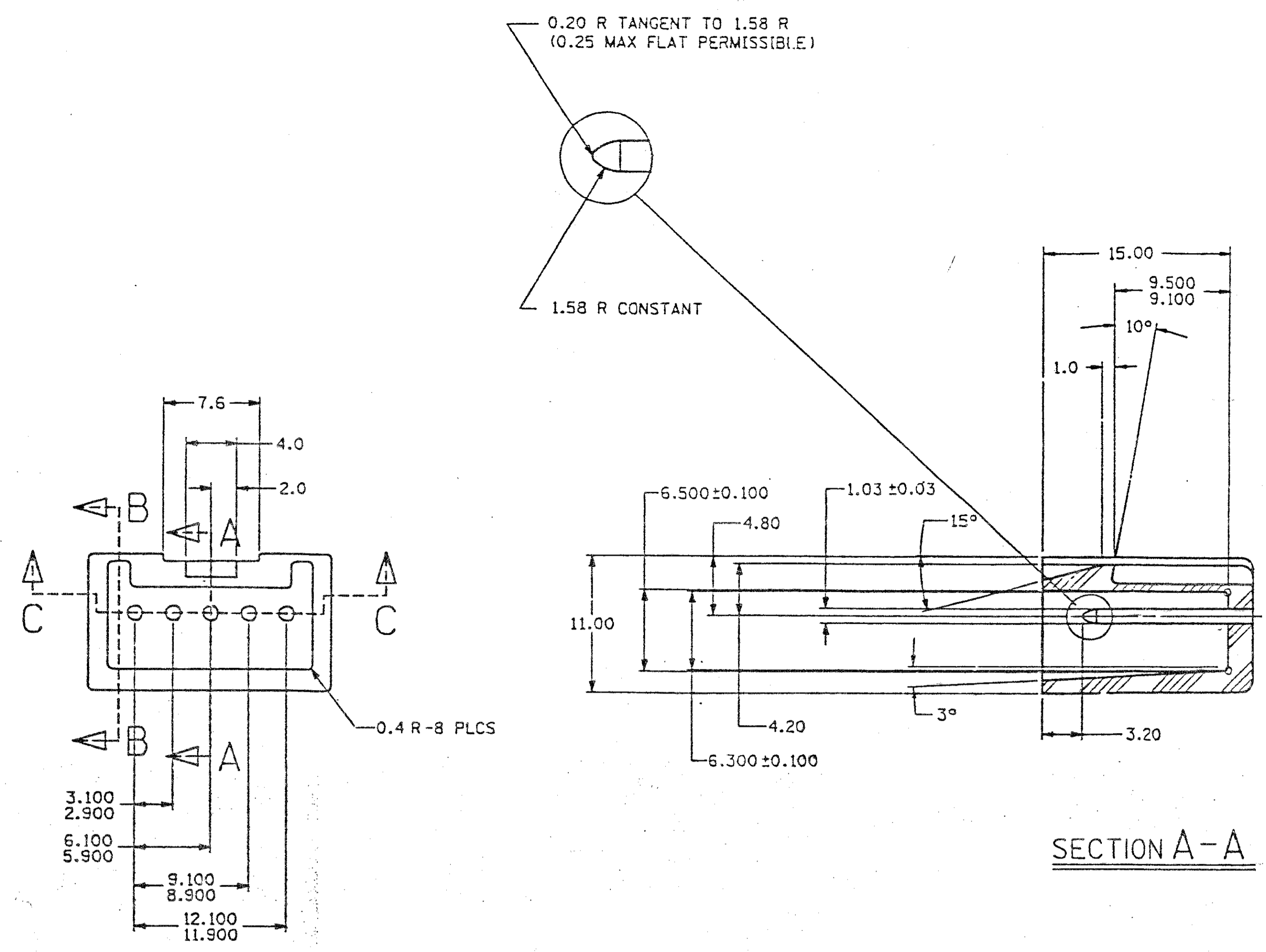
GENERAL MANAGER, UNITED STATES ELECTRIC DIVISION

1206 4982

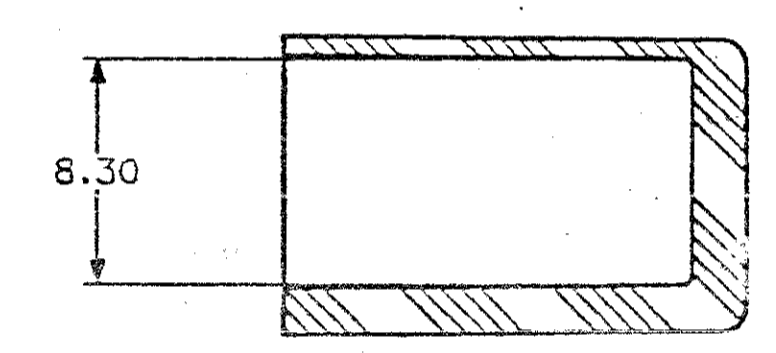
REV	DATE	BY	REVISION RECORD	AUTHORITY OR
02	02/83		MAS ON "C" SIZE, ADDED MATING INFORMATION	155275 TR
03				
04				
05				
06				
07				
08				
09				
10				
11				
12				
13				
14				
15				
16				
17				
18				
19				
20				



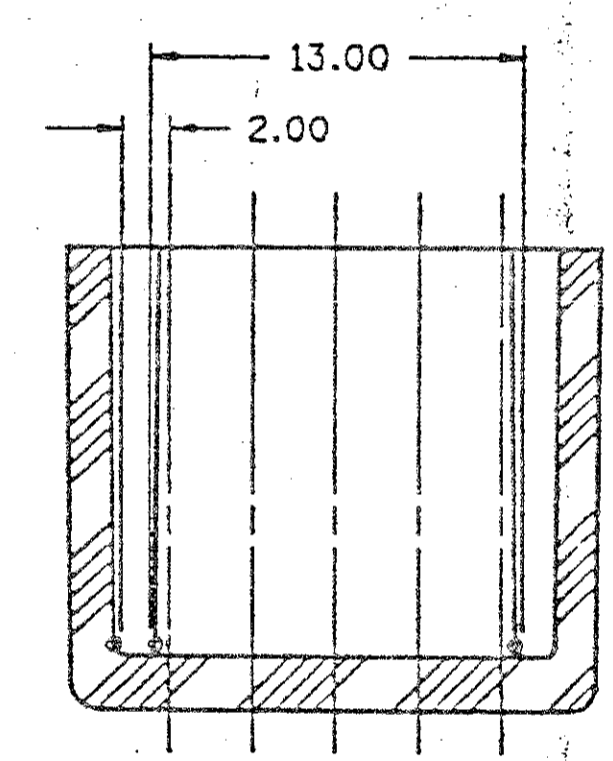
- NOTES - 1. CAVITIES TO ACCEPT 12089660 OR EQUIVALENT.
 2. CONNECTOR TO ACCEPT 12064987 T.P.A.
 3. CONNECTOR TO ACCEPT 12064989 C.P.A.
 4. MATING CONNECTOR 12047829 OR EQUIVALENT.
 5. ALL CAVITIES ACCEPT A MAX INSULATION CRIMP OF 2.30 HIGH AND 3.50 WIDE (2.40 MAX CABLE OD).
 REFER TO ESA-605 FOR CRIMP DIMENSIONS.



SECTION A-A



SECTION B-B



SECTION C-C

- NOTES - 1. ALL RADII 0.40, UNLESS OTHERWISE SPECIFIED.
 2. DIMENSIONS ARE TO FACE OF VIEW SHOWN, UNLESS OTHERWISE INDICATED.
 3. 0°30' DRAFT ON ALL SURFACES, UNLESS OTHERWISE SPECIFIED.

MATING INFORMATION

1206 4982

1206 4982

C1001573

THIRD ANGLE PROJECTION	FILE SPEC: 88-32-1193 2322
6901	METRIC
DATE: 18NO85	ROIOO151 PBT-BLK
12064981 "R" SIZE	CONN SF MIC/R 100
1206 4982	1206 4982