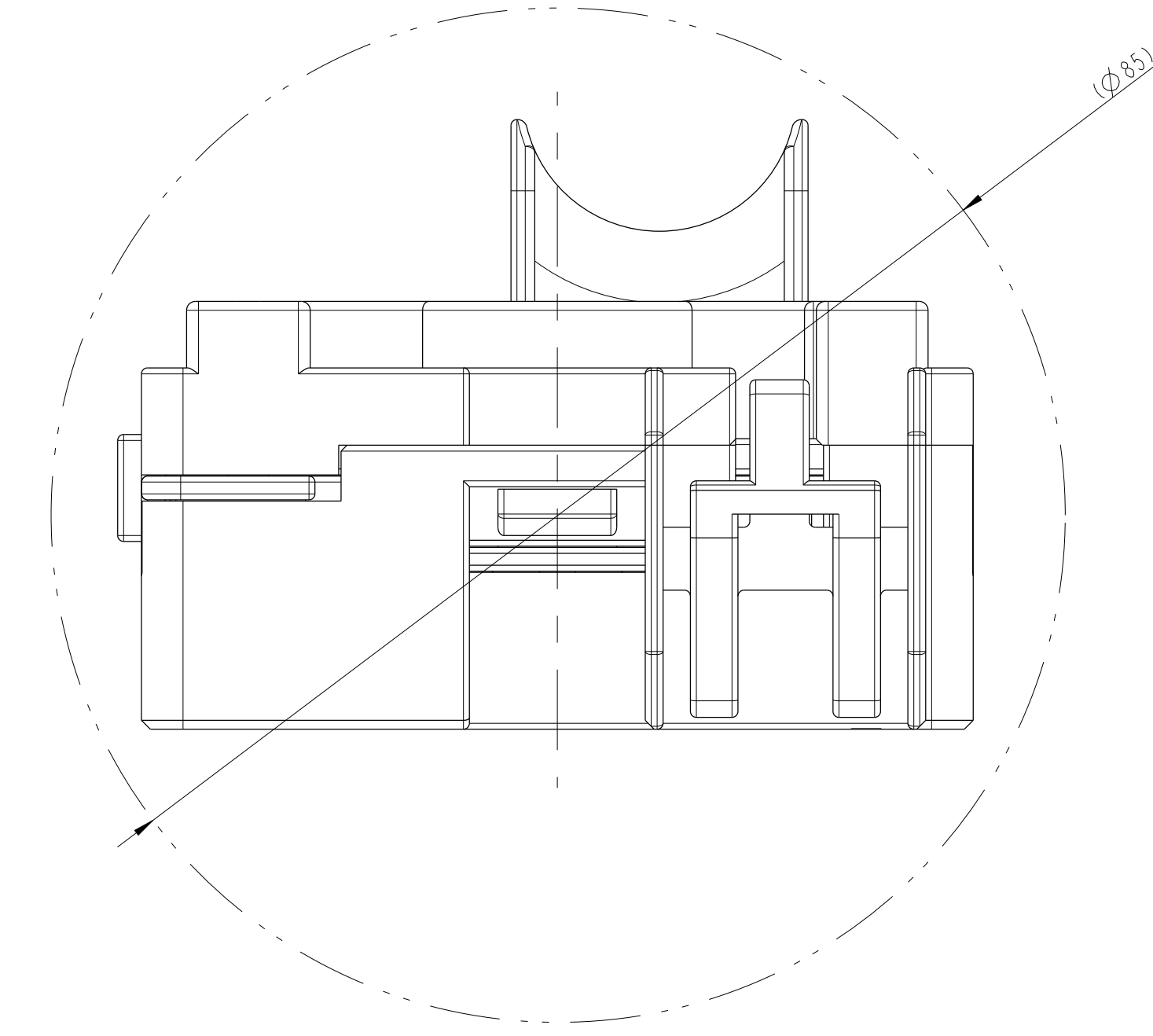
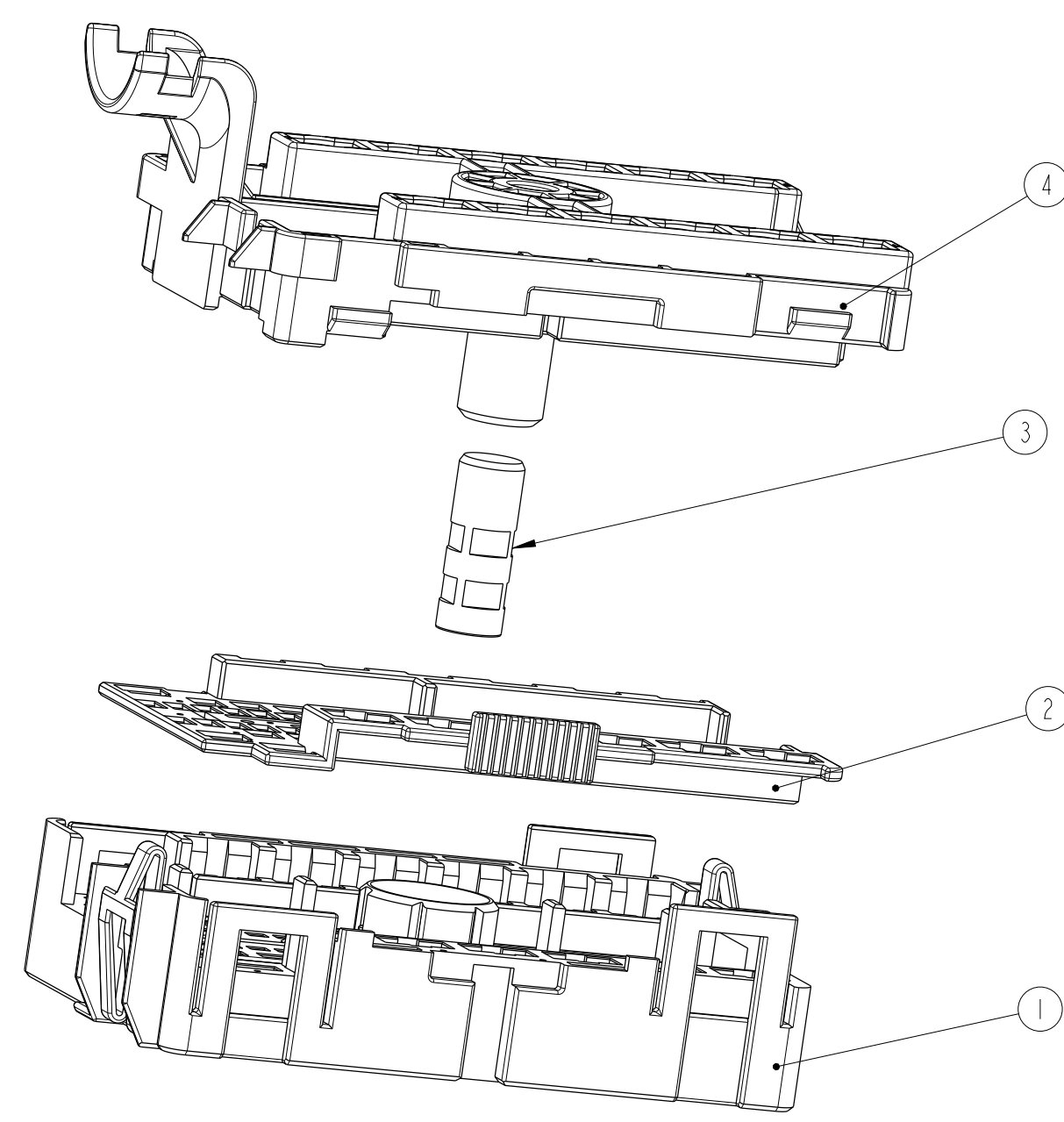
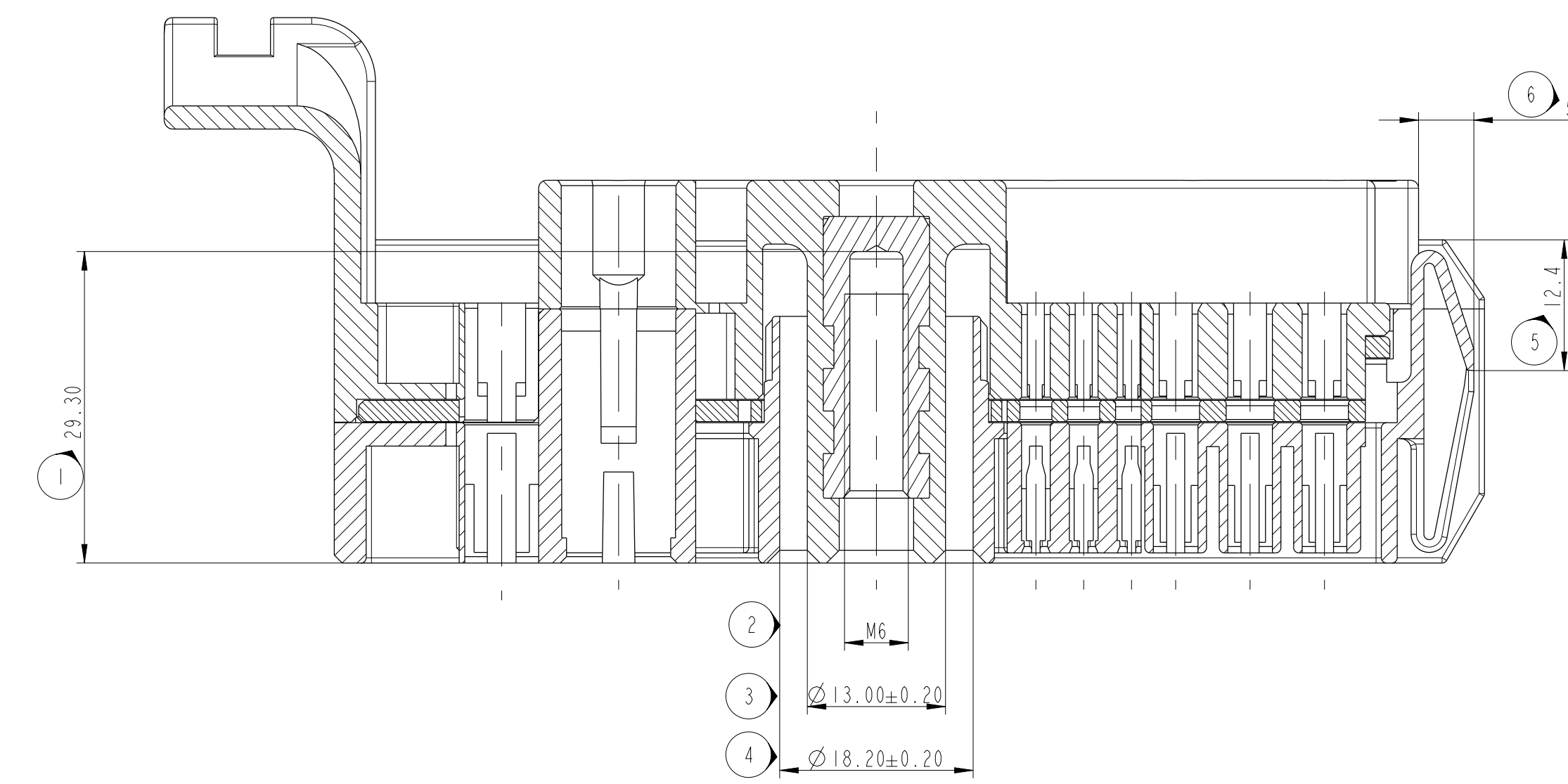


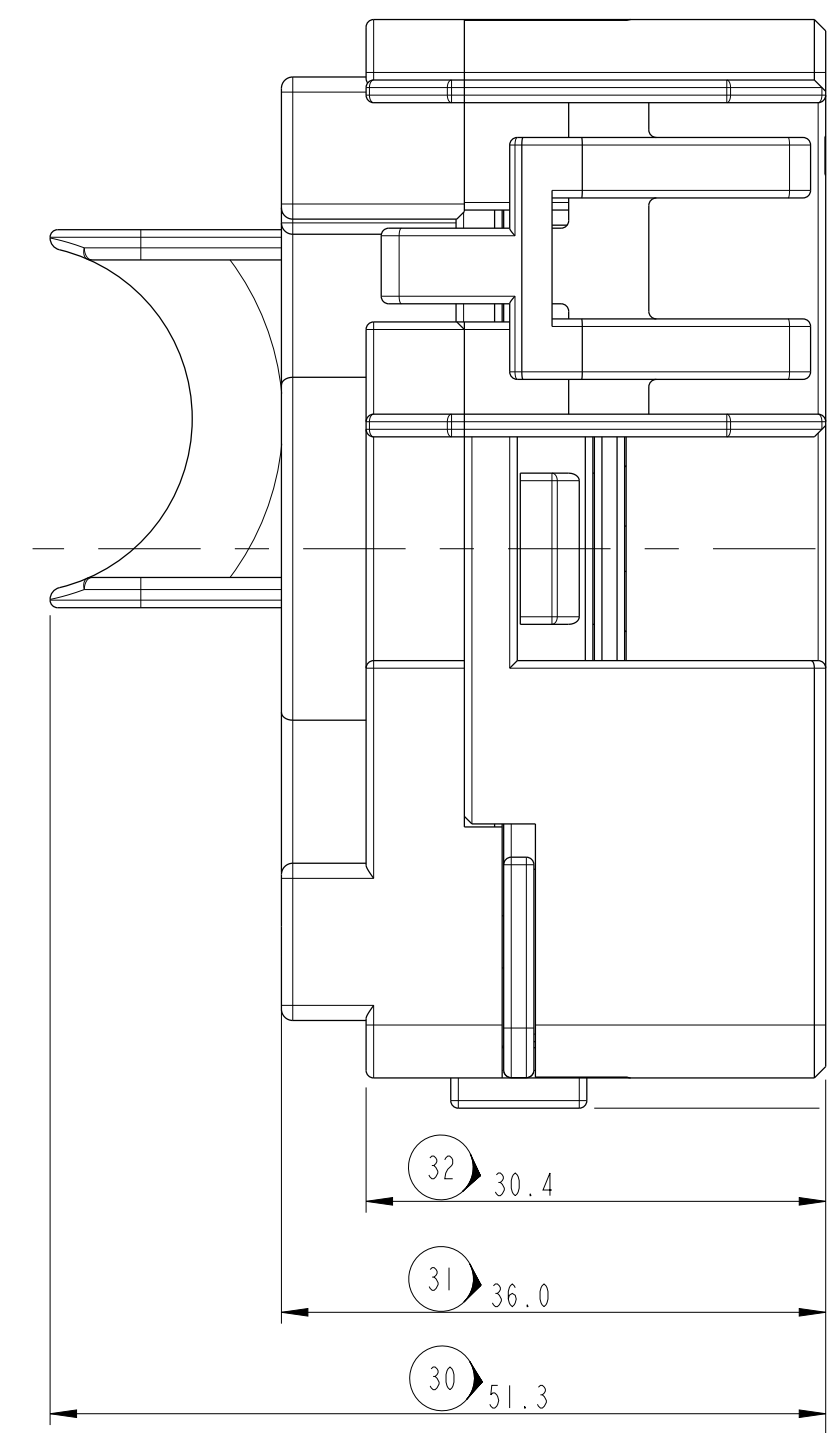
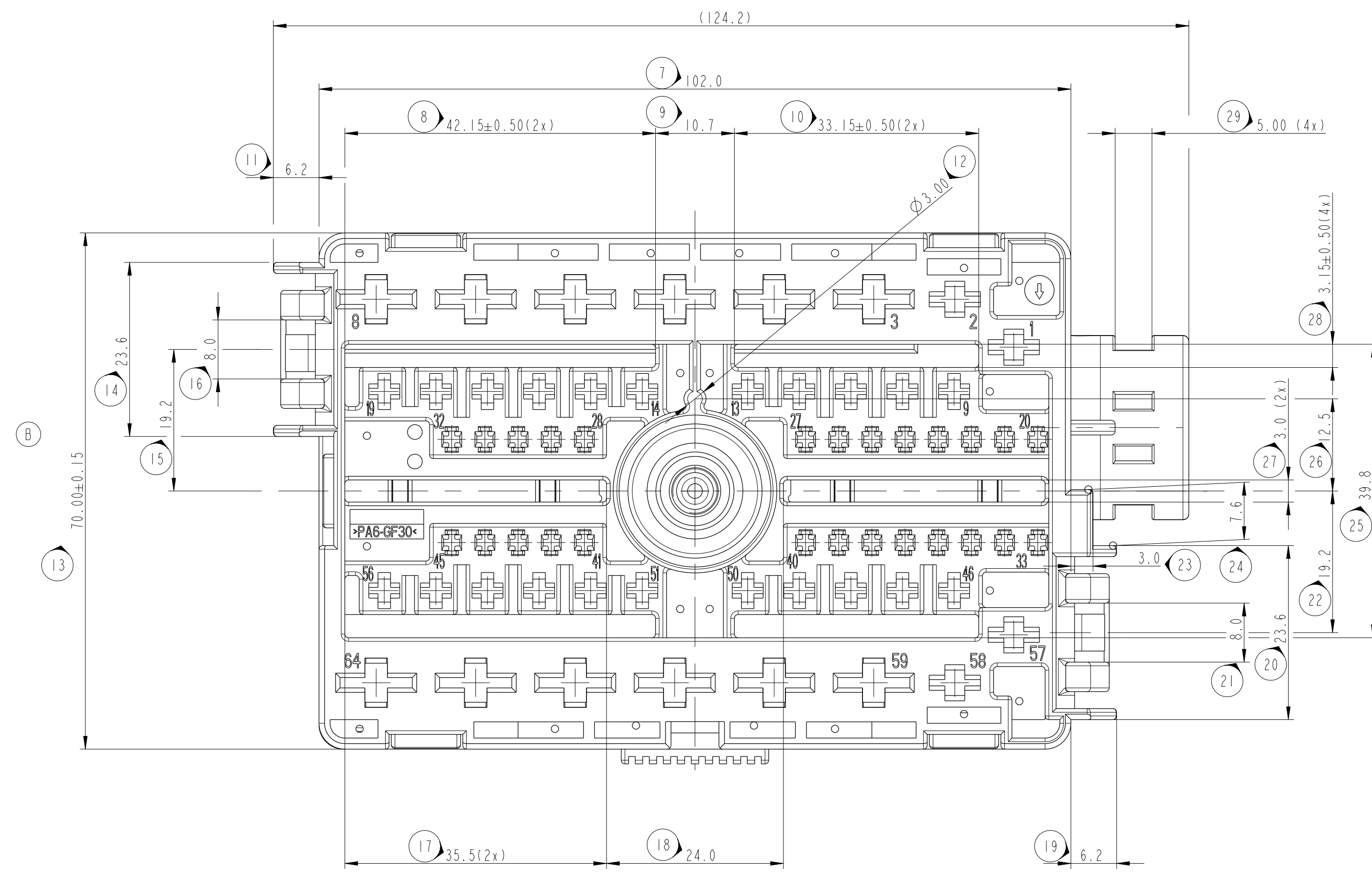
EXPLODED VIEW
M 1:1



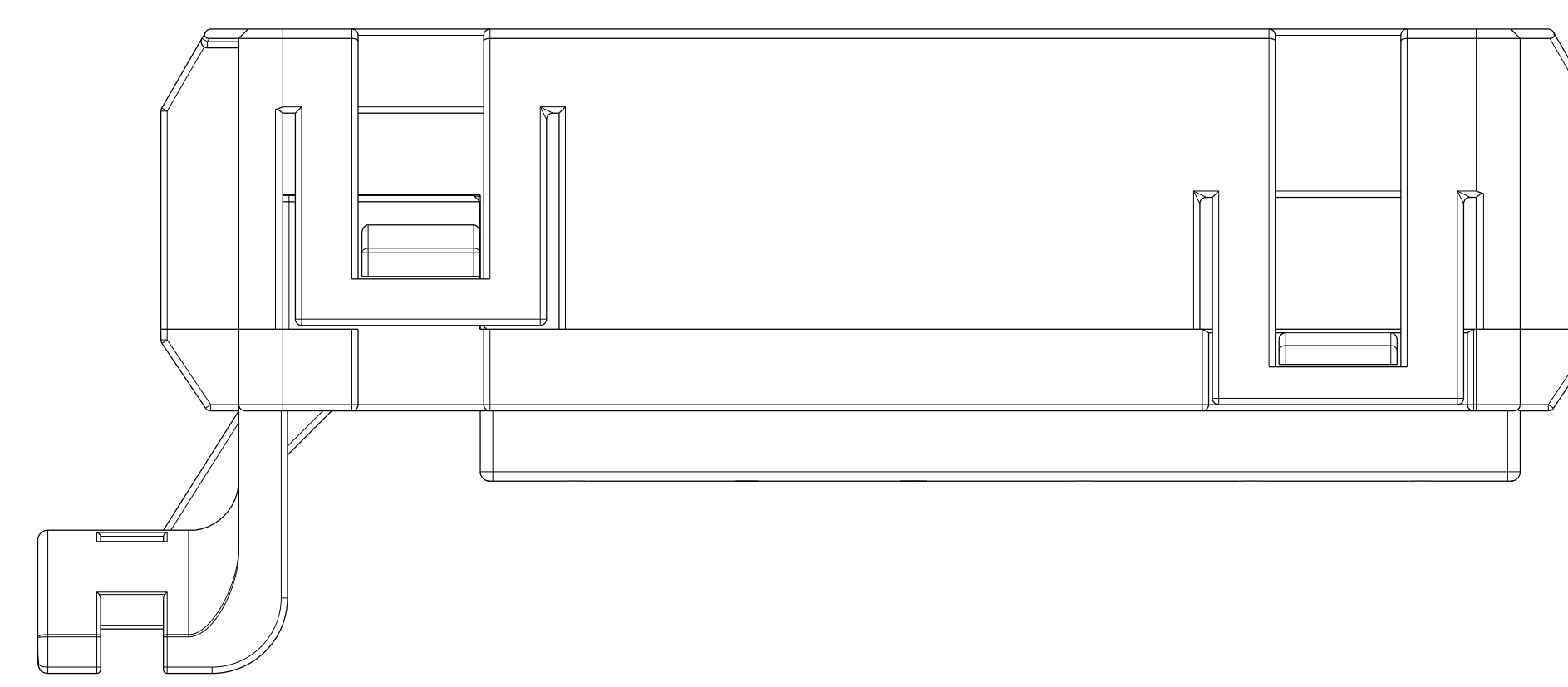
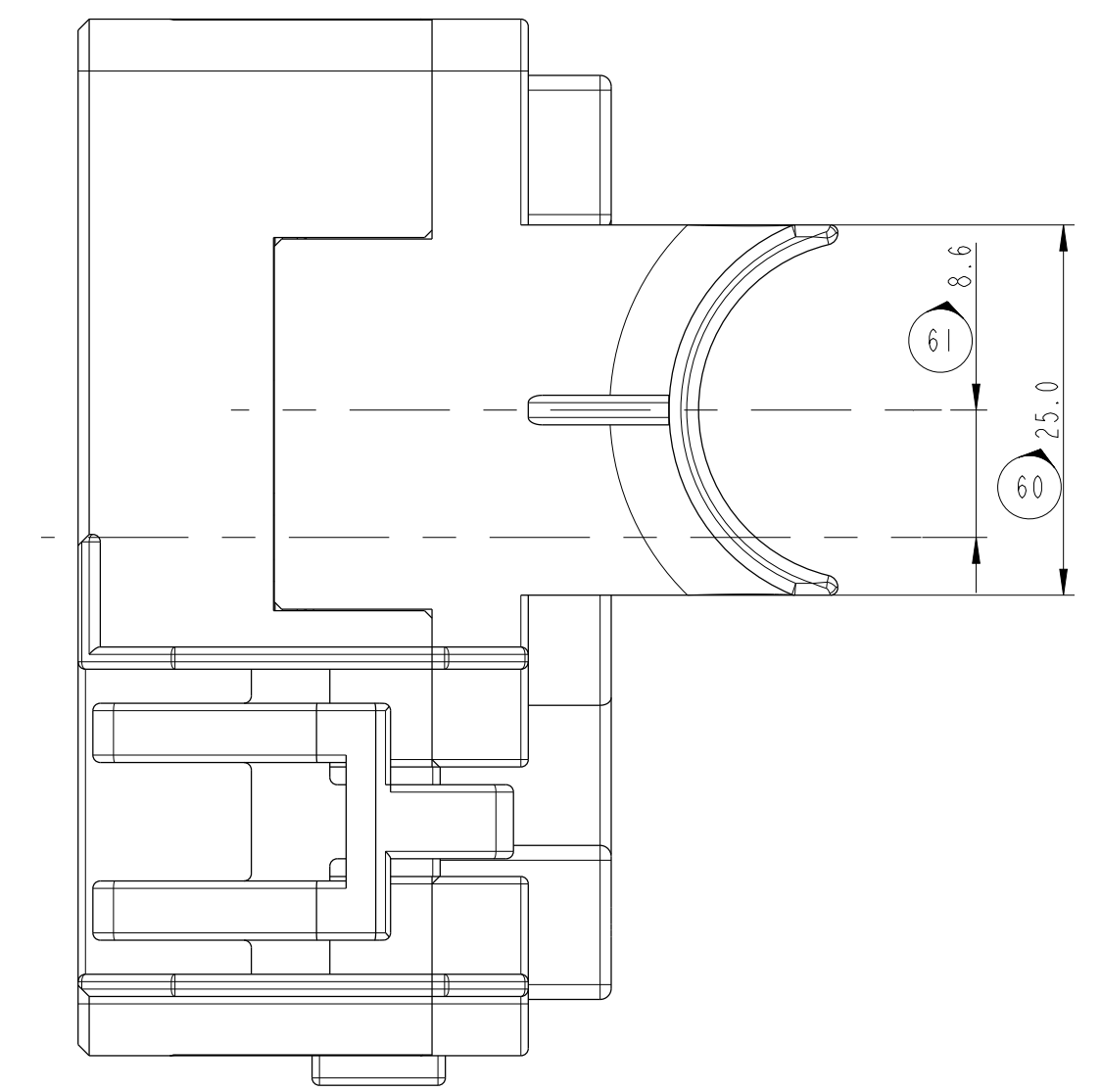
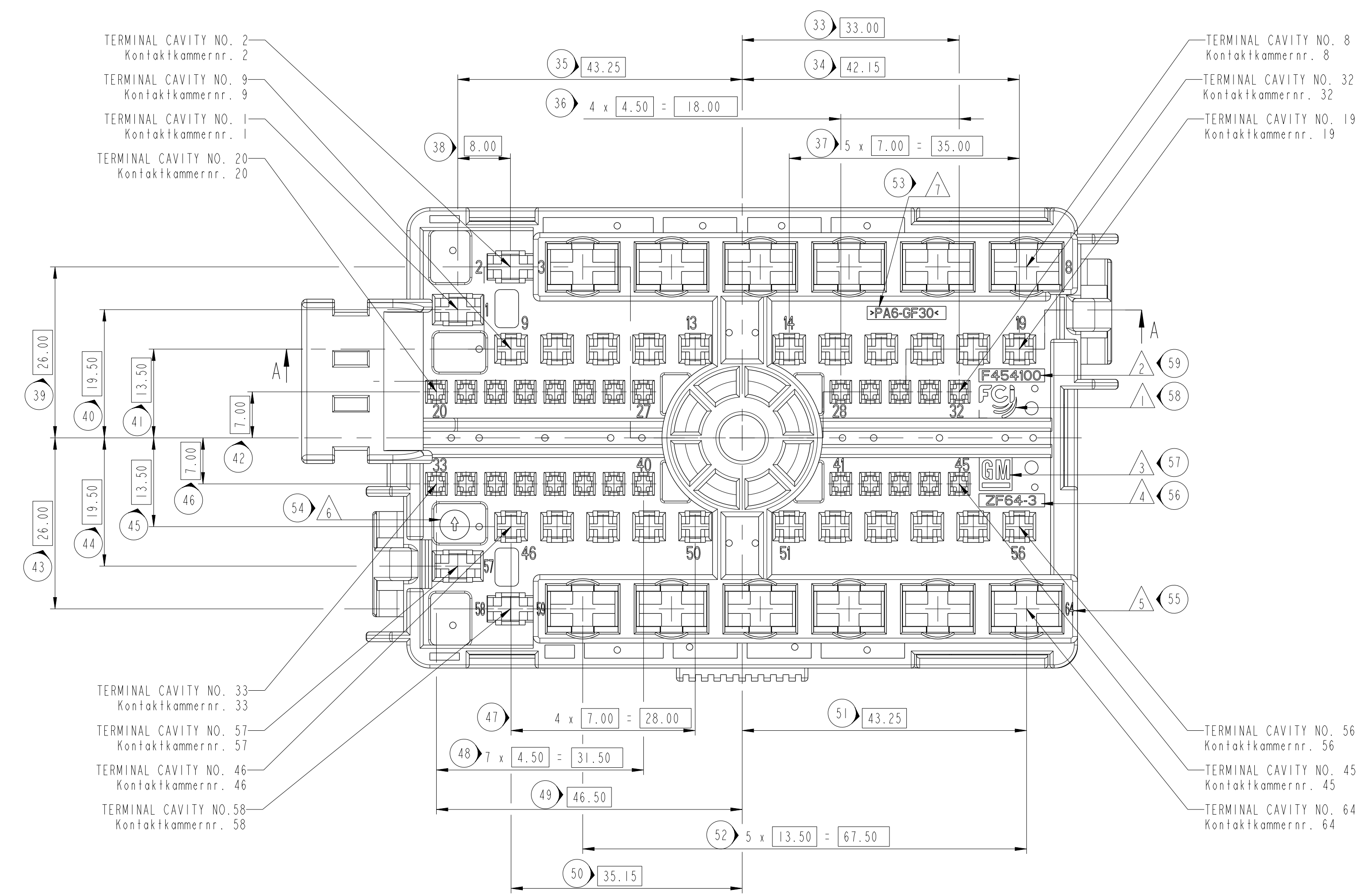
SECTION A-A
Schnitt A-A



NOTES	Bemerkungen:
MVL LOGO / MVL Logo	
MVL PART NO. / MVL Teilnr.	
GM LOGO / GM Logo	
GM ABBREVIATION / GM Kurzzeichen	
TERMINAL CAVITY NO. / Kontaktkammernummerierung	
DATE CLOCK / Datumsuhr	
MATERIAL MARKING / Materialkennzeichnung	
MAX. FASTENING TORQUE FOR COUNTERPART LOCKING BOLT: 7 Nm / max. Anzugsmoment für die Befestigungsschraube am Gegenstück: 7 Nm	
ISIR Dimensions / ENPB-Maße	



TPA AT - PRESET POSITION; MAX.: 121
TPA in 'Vorraststellung'; Hub: 121



DESCRIPTION	Sn VERSION	Sn VERSION	Sn VERSION	Sn VERSION	Sn VERSION
12x FEMALE TERMINAL 9.5mm BOX	6 007 04 71	10780234	>6.0 - 10.0	CONTACT BODY: CuCrSiTi R480-550 / 1-3µm Sn CANTILEVER SPRING: Ueberfeder: X10 CrNi 18 8 / BLANK	F454100
	6 007 04 61	10780235	>4.0 - 6.0		
	6 007 04 51	10780236	2.5 - 4.0		
4x FEMALE TERMINAL SPT (TYCO)	TYCO NO. 0-0863709-I	15327971	4.0 - 6.0	SEE TYCO DRAWING siehe Tyco Zeichnung C-1355049	13981393
	TYCO NO. 0-964328-I	15363651	2.5 - 4.0		
	TYCO NO. 0-964326-I	15327894	1.0 - 2.5		
	TYCO NO. 0-964324-I	15327893	0.5 - 1.0		
22x FEMALE TERMINAL 2.8mm DCS-2	6 001 28 41	10751584	>1.0 - 2.5	CONTACT BODY: CuSn4 R540 / 1-3µm Sn CANTILEVER SPRING: Ueberfeder: X10 CrNi 18 8 / BLANK	ZF 64-3
	6 001 28 31	10751585	0.5 - 1.0		
	6 001 28 11	10751583	>0.2 - 0.35		
26x FEMALE TERMINAL 1.5 x 0.8mm DCS-2	F688000	33511725	>1.0 - 1.5	CONTACT BODY: CuFe ZP R470 / 1-3µm Sn CANTILEVER SPRING: Ueberfeder: X10 CrNi 18 8 / BLANK	170 g
	F388000	33511724	0.50 - 1.0		
	F988000	33511723	>0.2 - 0.35		

QTY	DESCRIPTION	MATERIAL	QTY	DESCRIPTION	MATERIAL
4	HOUSING PART 2 Gehäuse Teil 2	PAG-GF30	GM	QK002713	BLACK schwarz
3	BREADER BUSH Gewinndüchse	CuZn 39 Pb3 R500	-	-	(BARE) (blank)
2	TPA Sekundärverriegelung	PAG-GF30	GM	QK002713	VIOLETT violett
1	HOUSING PART 1 Gehäuse Teil 1	PAG-GF30	GM	QK002713	BLACK schwarz

SEALING CLASS Dichteklasse	1
TEMPERATURE CLASS Temperaturklasse	2
VIBRATION CLASS Schwingungsklasse	1
TORQUE FOR FIXING SCREW: RECOMMENDATION: 7.2 Nm ± 1.44 Nm / 300 RPM	
BOLT ASSISTED MOUNTING ACC. GWM 15841 JUN 2008	

13-00543 REDRAWN IN DELPHI TITLE BLOCK, SEE REV. "B" FOR PREVIOUS CHANGES
AD 18 28 BOM TABLE MODIFIED AND DELPHI P/VN

ITEM NO.	DESCRIPTION	QTY	UNIT	REVISION
1	64W FEMALE CONNECTOR	1	PC	1

DELPHI
SERIAL RELEASED
F454100