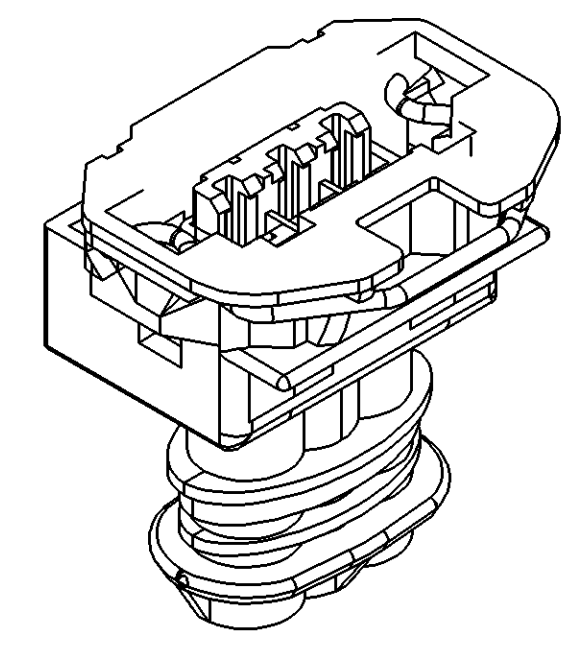
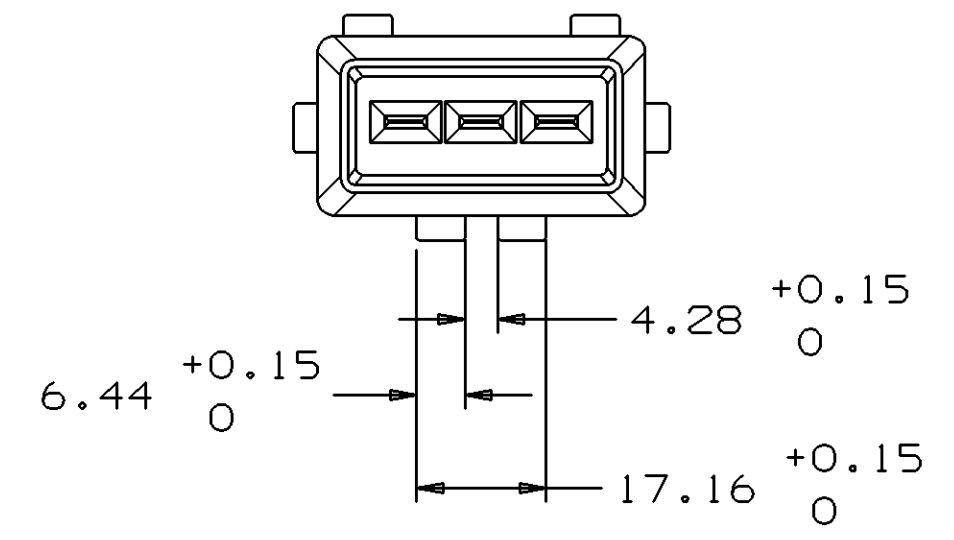
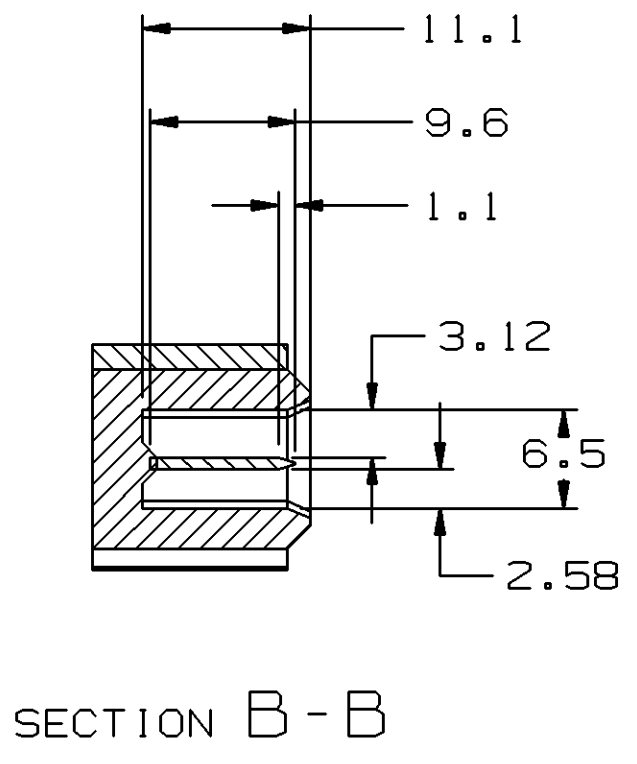
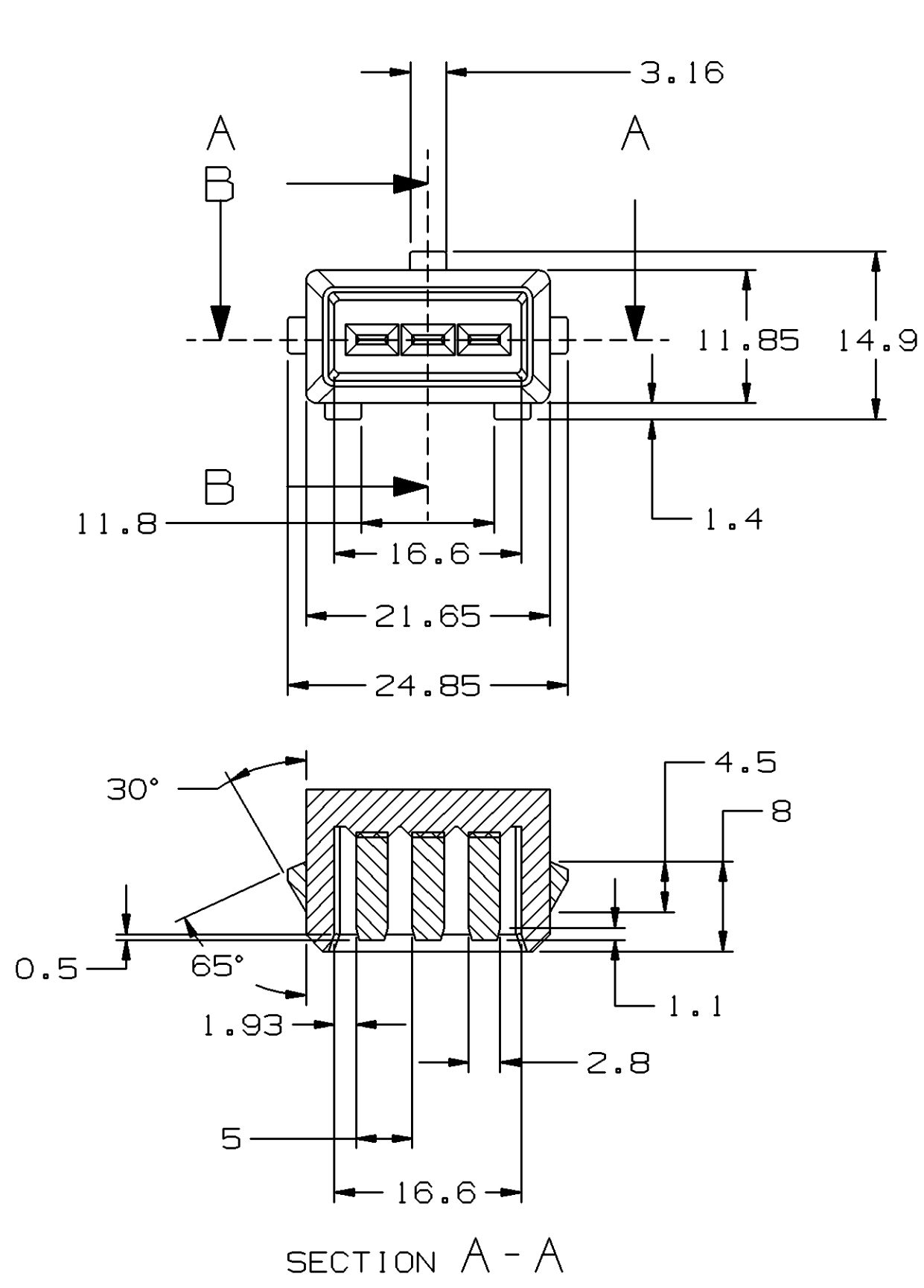


DWG STATUS					ZONE	REVISION HISTORY			AUTH	DR	APVD1	APVD2
DATE	STG	REV	N/P	CHG	-	CREATED PART DRAWING			030005	KSB	TIA	EHC
20FE03	R	01	-	-								



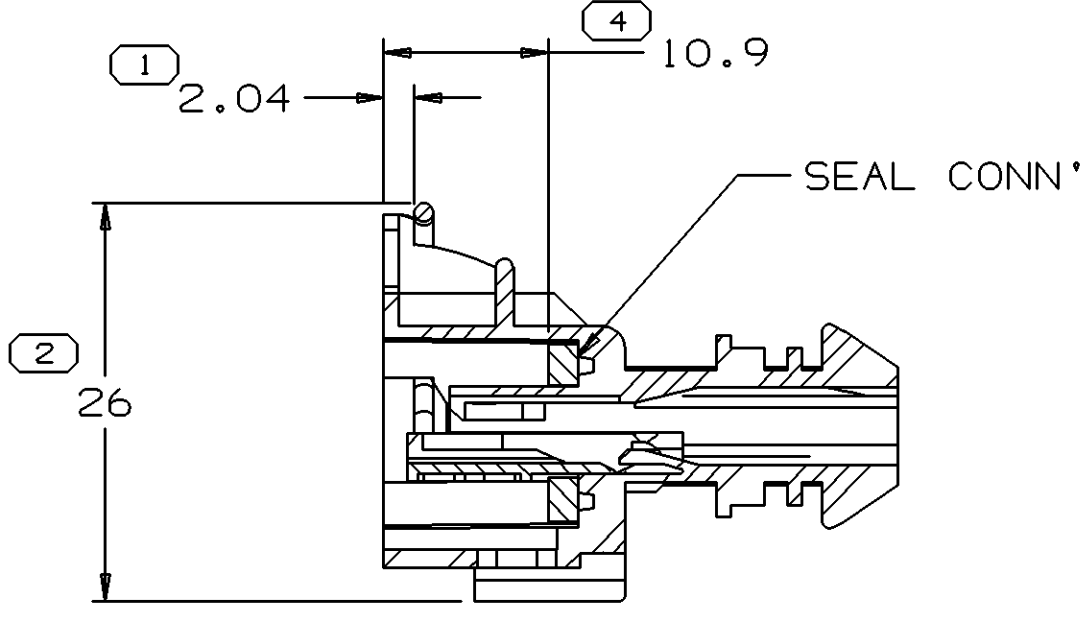
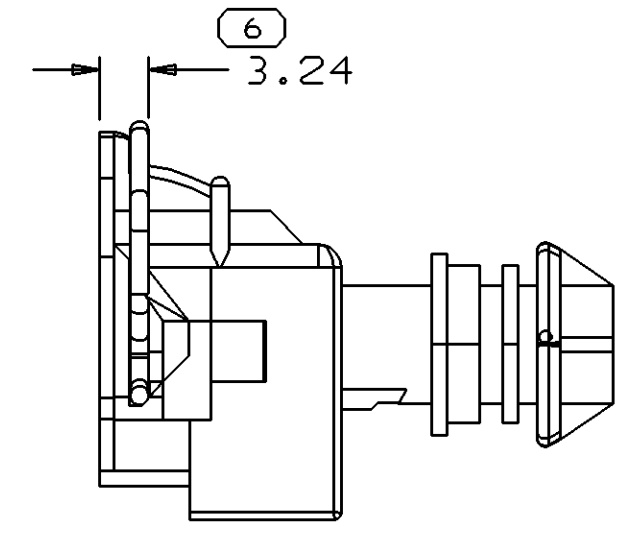
TYPE A

TYPE B

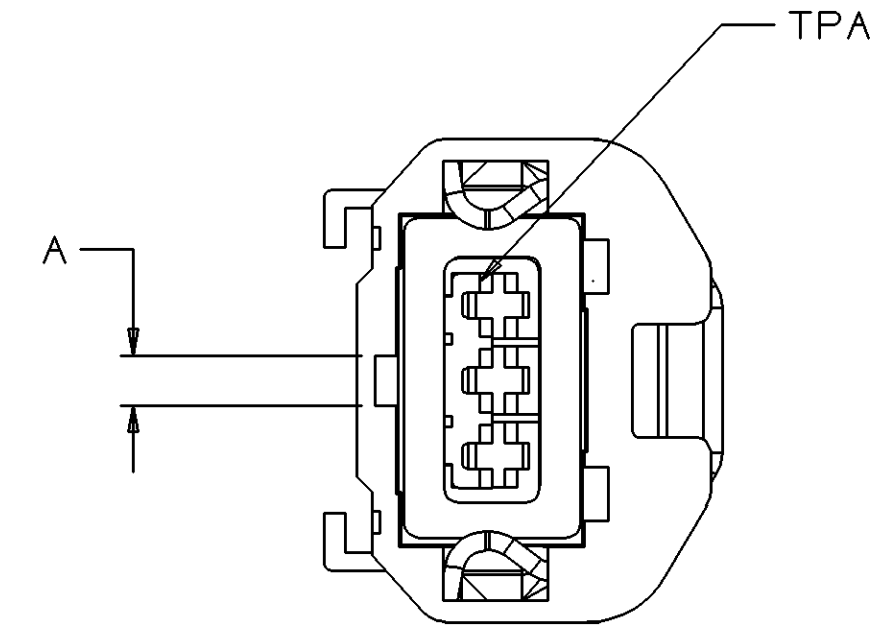
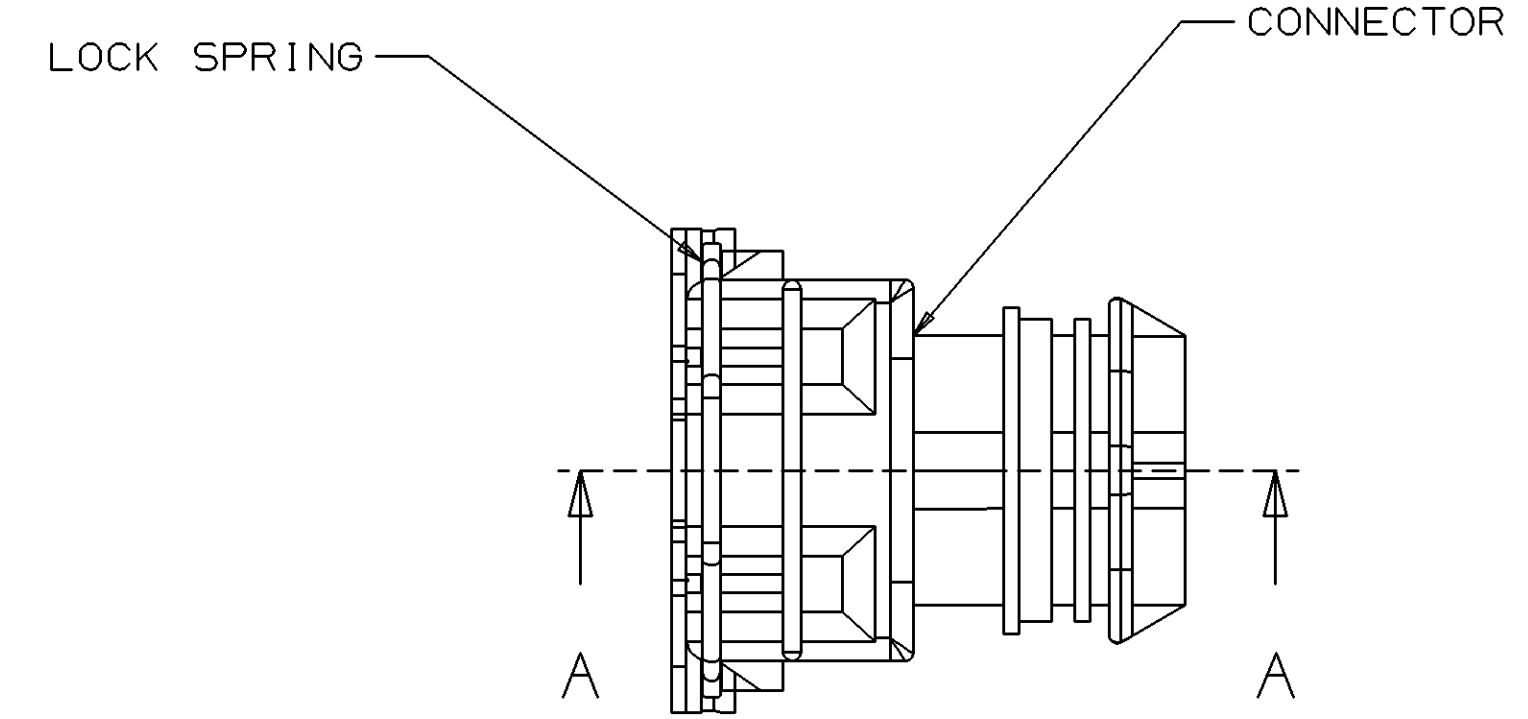
MATING CONNECTOR INFORMATION

NOTES

- UNLESS OTHERWISE SPECIFIED AND/OR INDICATED: DIMENSIONS ARE TO FACE OF VIEW SHOWN AND AUTOMATICALLY ROUNDED BY COMPUTER FOR INSPECTION (SEE MATH MODEL FOR PRECISE DIMENSIONS). FOR ALL OTHER DIMENSIONS NOT SHOWN BUT REQUIRED FOR TOOL BUILD, SEE MATH MODEL FOR PRECISE TOOL PATH DATA.
- SEALING CODE 3 - DESIGN WILL PASS SALT FOG AND IMMERSION TEST AFTER CONDITIONING AS SPECIFIED IN ESA-644 (WEATHER-PACK), ESA-710 (METRI-PACK), ESA-650 (UNDERHOOD MICRO-PACK), C-4006 (WORLD CONNECTOR), ETC WHEN MATED TO MATING PART OR EQUIVALENT
- MATING COMPONENTS OR EQUIVALENT: SEE CHART
- FOR MATING CONFIGURATION REQUIREMENTS: SEE MATING CONNECTOR INFORMATION.



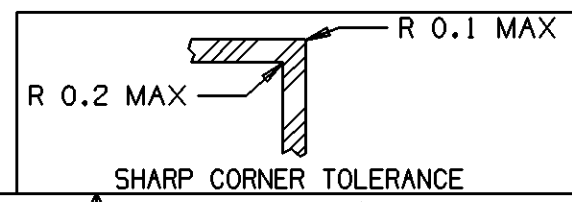
SECTION A - A



15337693	01	B	12089678	12157739	15337694	9.0mm	15461686	15337667	15337681
15337669	01	A	12089678	12157739	15337668	3.3mm	15337680	15337667	15337681
PART NO	REV	TYPE	CABL/SEAL	TERMINAL	CONNECTOR	A	CONN SEAL	TPA	LOCK SPRING

PROCESS SENSITIVE DIMENSION

DIMENSIONS ENCLOSED IN ( ) INDICATE REFERENCE DIMENSIONS AND NO TOLERANCE LIMITS ARE ESTABLISHED



DIMENSIONAL RANGE (MM)	CHART E1
FROM TO	
> 0 > 20	±0.15
> 20 > 30	±0.2
> 30 > 70	±0.3
> 70 > 100	±0.4
> 100 > 150	±0.5
> 150 > 200	±0.6
> 200 > 250	±0.8
> 250 > 300	±1
> 300 > 400	±1.2
TOLERANCE UNLESS OTHERWISE SPECIFIED	
ANGULAR TOLERANCE ±2°	

DWG TYPE		PART DRAWING	
STYLE			
VOLUME (CM <sup>3</sup> )	DISTR CODE		
ROUTING	6900		
UNLESS OTHERWISE SPECIFIED			
THIS DOCUMENT IS IN ACCORDANCE WITH ASME Y14.5M-1994 AS AMENDED BY THE GM GLOBAL DIMENSIONING AND TOLERANCING ADDENDUM - 1997. ALL GEOMETRIC TOLERANCES AND RELATED DATUMS APPLY RFS. RULE #1 (PERFECT FORM AT MMC) DOES NOT APPLY WHEN RELATIONSHIP BETWEEN FEATURES IS ESTABLISHED BY ORIENTATION OR LOCATION TOLERANCES. SEPARATE POSITION CALLOUTS MAY BE GAGED SEPARATELY, REGARDLESS OF DATUM REFERENCE.			
THIRD ANGLE PROJECTION		DO NOT SCALE	
USE MATH DATA		UNIGRAPHICS	

**DELPHI**

DELPHI PACKARD ELECTRIC SYSTEMS  
WARREN, OH

THIS DRAWING IS THE PROPERTY OF DELPHI CORPORATION. NO RIGHTS ARE GRANTED TO USE THIS DRAWING FOR ANY PURPOSE OTHER THAN THE FURNISHING OF SERVICES AND SUPPLIES TO DELPHI CORPORATION.

DR	K.S.BACK	DATE	20FE03
APVD1	T.I.AHN		20FE03
APVD2	T.I.AHN		20FE03
APVD3	E.H.CHEONG		21FE03
APVD4			
APVD5			

SUBSTANCES OF CONCERN AND RECYCLED CONTENT PER DELPHI 10949001

MATERIAL REFER TO EACH PARTS DRAWING

DRAWING NAME  
ASM DS 3WAY CONNECTOR

DRAWING NUMBER  
15337669

SIZE	SCALE	FRAME NO	SHEET NO	STG	REV	N/P
A1	2:1	1 OF 1	1 OF 1	R	01	-