

product: DELPHI PN 12147301

material: CUNISI

surface: F.SN3

material thickness: 0,38 mm

cross section [mm²]: 1,5 | 2,5

strip length: 4,50 mm

cable type: FLU142Y

insulation ø [mm]: 1,90 - 2,70

seal:

**Uncontrolled
Copy**
For Information only!

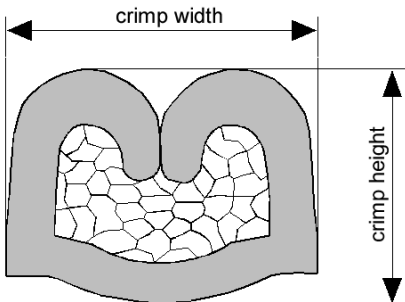
conductor dimension					crimp dimension [mm]					
cable type	cross sect. [mm ²]	struct. n x d [mm]	insul. diam. [mm]	tear-out force [N]	core		insulation			
					height ± 0,05	width ± 0,10	height ± 0,10	width ± 0,10	height ± tol.	width ± tol.
FLU142Y	1,5	19 x 0,33	2,00	200	1,70	2,85	2,80	3,60		
FLU142Y	2,5	19 x 0,41	2,60	250	1,90	2,90	3,10	3,65		

core:
C-2.75-3.5-19
DPN 10713702

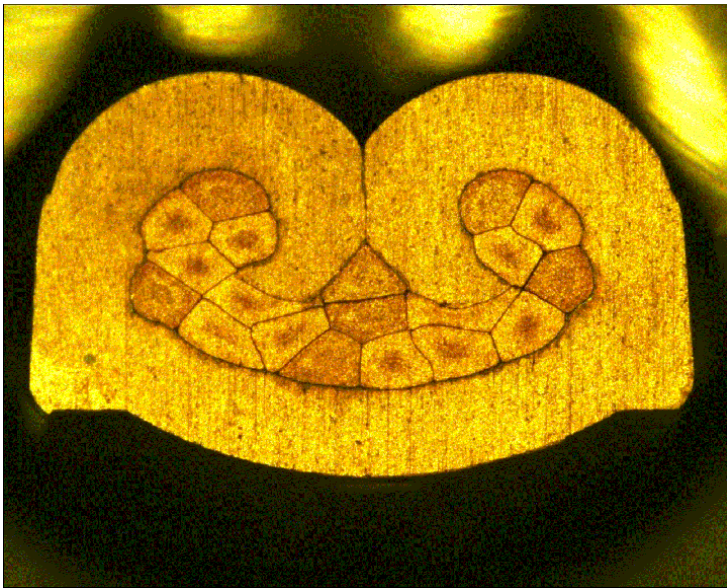
insulation:
IO-3.50-2.5-12
DPN 10713871

anvil:
AS-2.75-3.50-7.7-3.0-0.4
DPN 10713951

two piece anvil:
AC-2.75-3.75
DPN 10764131
AI-3.50-3.4-0.4
DPN 10806915



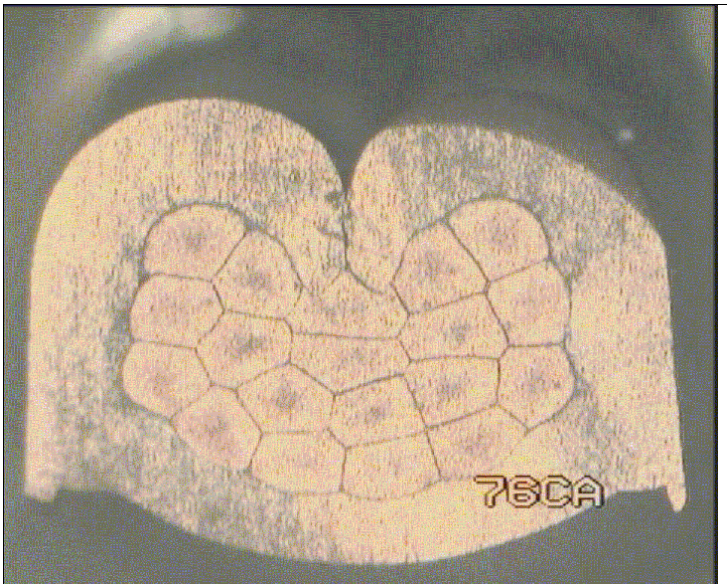
DELPHI PN 12147301



cable:
 $1,50 \text{ mm}^2 = 19 \times 0,33 \text{ mm}$

crimp height:
1,70 mm

crimp width:
2,85 mm



cable:
 $2,50 \text{ mm}^2 = 19 \times 0,41 \text{ mm}$

crimp height:
1,90 mm

crimp width:
2,90 mm