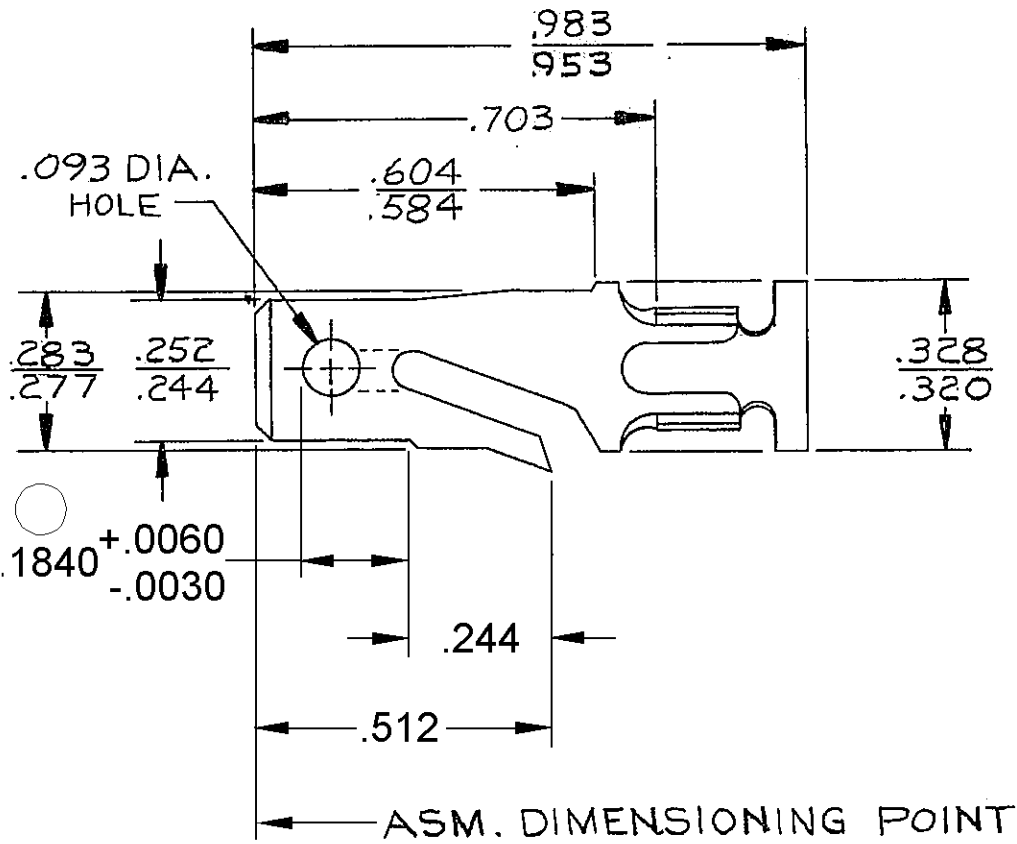


PACKARD ELECTRIC DIVISION
GENERAL MOTORS CORPORATION
WARREN, OHIO

DO NOT SCALE

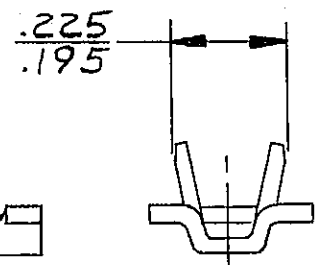
D

THIS DRAWING AND DESIGN HEREON CONSTITUTES A PROPRIETARY DESIGN OF PACKARD ELECTRIC DIVISION AND IS NOT TO BE DUPLICATED OR REPRODUCED WITHOUT AUTHORITY OF PACKARD ELECTRIC DIVISION



CONDUCTOR WINGS FOR 5.0 - 3.0MM² CABLE.

C02D2169



19-A
 4/100-9
 173-F5V(3)
 194 P1
 14A

NOTE - MAX. CONTINUOUS CURRENT CARRYING CAPACITY 10GA. 43 AMPS. - 12 GA. 33 AMPS. (CRIMP & SWEAT APPLICATION).

PART NO. **1201 5878**

DATE	SYM.	REVISION RECORD	C/NNO.	DR.	CK.
09JN80	A	RELEASED	80005	H.H.	MP
01SE82	-	PICTURE REVISED	82155	T.W.	Jm
01AU83	B	REV. SYM. ADVANCED	86126	MS	Jm
28AP97	-	REVISED	177598	G4	G4
05DE05	B7	ADDED DIM .1840 +.0060 / -.0030, DIM .512 & REMOVED DIM (1 PLC)	274727	GPS	JVM

CODE NO. 6900	TOLERANCE UNLESS OTHERWISE SPECIFIED DECIMAL: TWO PLACE ± .01 THREE PLACE ± .005	
QC	DWG. DATE 09JN 80	SCALE NONE
DR. H. Hoke 09JN. 80	EST. NO.	CK. W. Pearce DATE 14JN80
REFERENCE NO. 2962864 "D" SIZE 3	SHT.	APPR. K. M. Kollin DATE 14JN80
MATERIAL SPEC. .0320 THK. SAE CA 260 BRASS 1/2 HARD-TIN PLATED	APPR.	DATE
NAME TERMINAL-MALE-56 SERIES		

PART NO. **1201 5878** SIZE **A**
 OUTLINE DRAWING