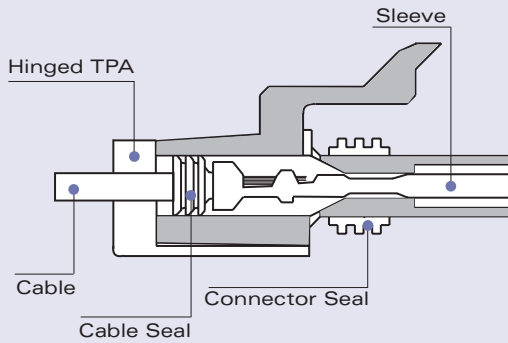
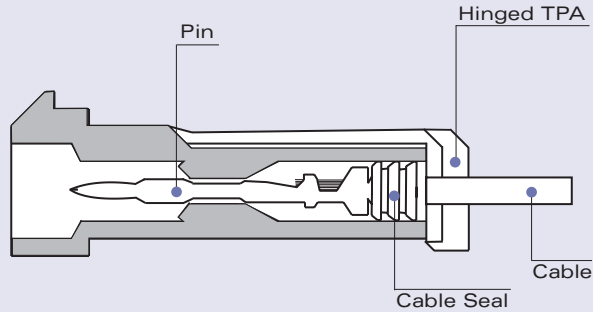




## Cross Sectional View



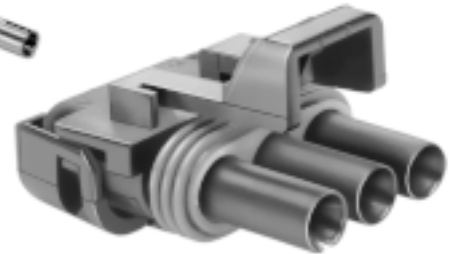
Female Connector Assembly



Male Connector



Female Terminal (Sleeve)



Female Connector Assembly

### WEATHER-PACK FEMALE TERMINALS (SLEEVE) SEALED\*

| Sleeve Part # | Cable Range (mm <sup>2</sup> ) | Material  | Plating |
|---------------|--------------------------------|-----------|---------|
| 12124581      | 3.0                            | Tin Brass | Tin     |
| 12124580      | 2.0-1.0                        | Tin Brass | Tin     |
| 15408312      | 0.80-0.50                      | Tin Brass | Tin     |
| 12020801      | 0.35                           | Tin Brass | Tin     |

\*Use of the Weather-Pack 6060 gage as a process control aid is recommended for Weather-Pack terminals. See page 327 in the Application Tooling section for details.



### WEATHER-PACK CABLE SEALS

| Reel Part # | Loose Part # | Cable Diameter | Material | Color    |
|-------------|--------------|----------------|----------|----------|
| 12015360    | 12015193     | 4.30-3.45      | Silicone | Blue     |
| 12015359    | 12010293     | 3.49-2.81      | Silicone | Lt. Gray |
| 12015284    | 12015323     | 2.85-2.03      | Silicone | Green    |
| 12041352    | 12041351     | 2.42-2.03      | Silicone | Tan      |
| 12089444    | 12089679     | 2.15-1.60      | Silicone | Purple   |
| 12034365    | 12015899     | 1.70-1.29      | Silicone | Dk. Red  |

### WEATHER-PACK FEMALE CONNECTOR ASSEMBLIES SEALED

| # Cavities | Connector Assembly | Color | Material |
|------------|--------------------|-------|----------|
| 1          | 12015791           | Black | PA6      |
| 2          | 12015792           | Black | PA6      |
| 3          | 12020829           | Black | PA6      |
| 4          | 12015798           | Black | PA6      |
| 4          | 12020832           | Black | PA6      |
| 6          | 12020926           | Black | PA6      |
| 22         | 12020991           | Black | PA6      |

<http://delphi.com/products/connect>