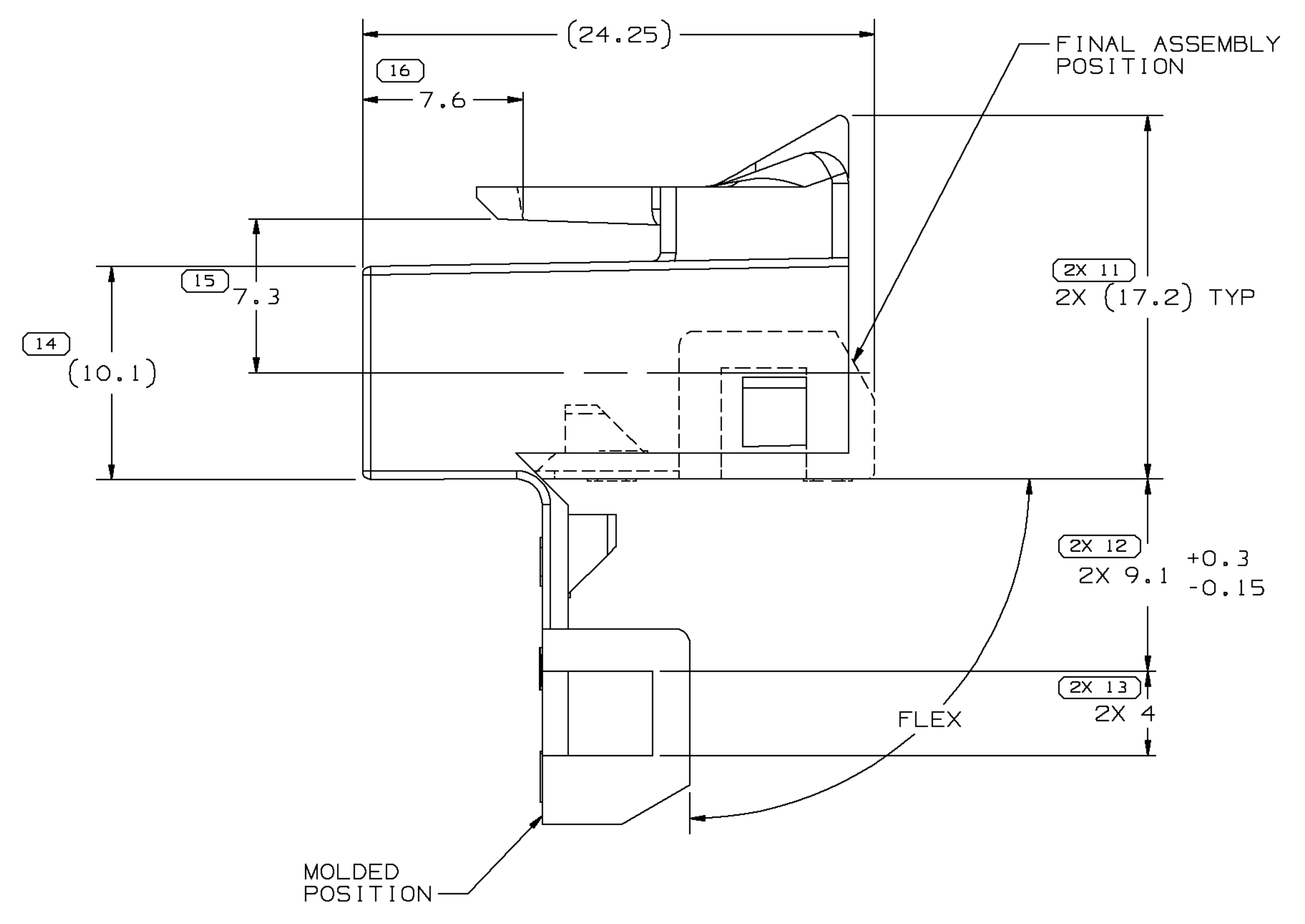
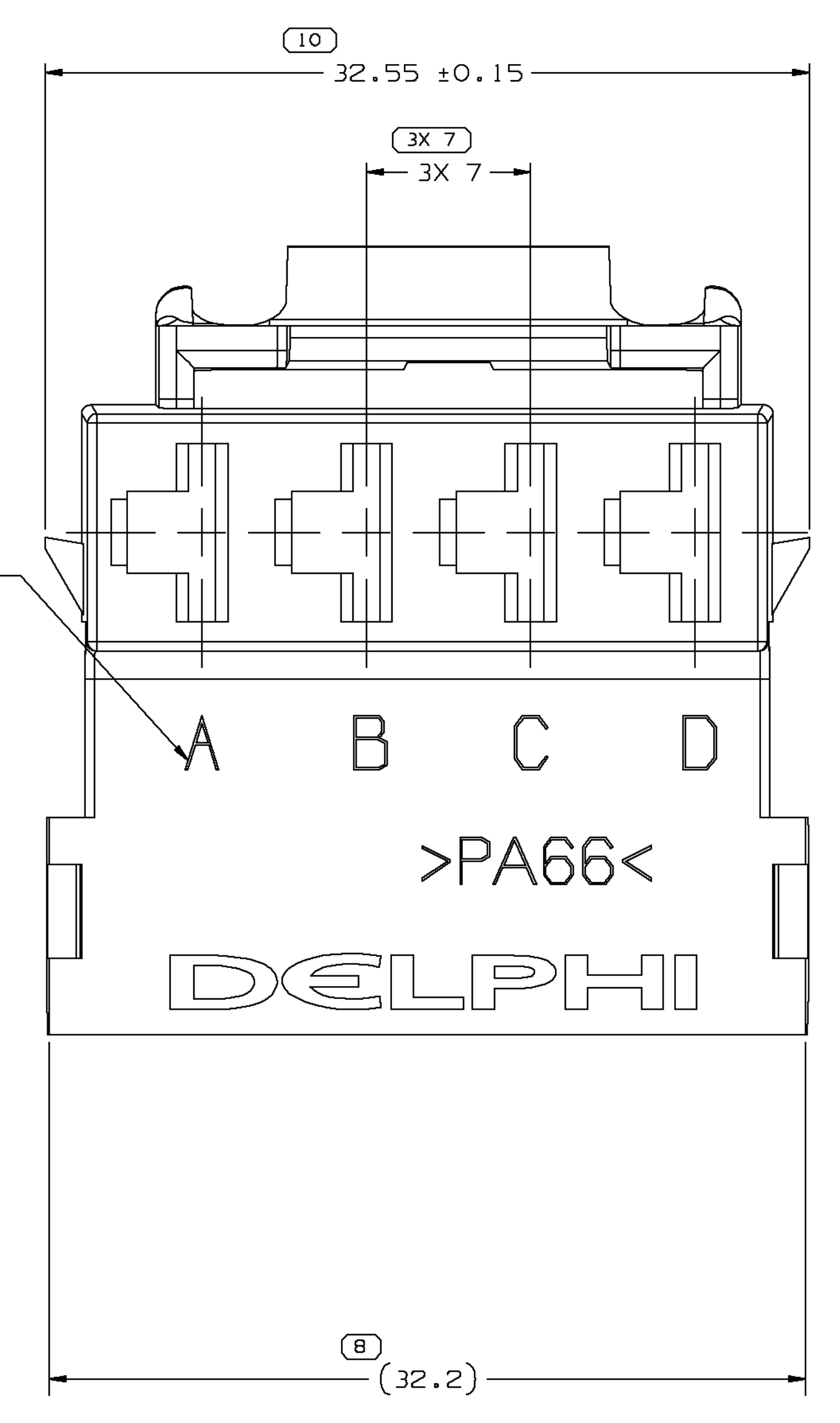
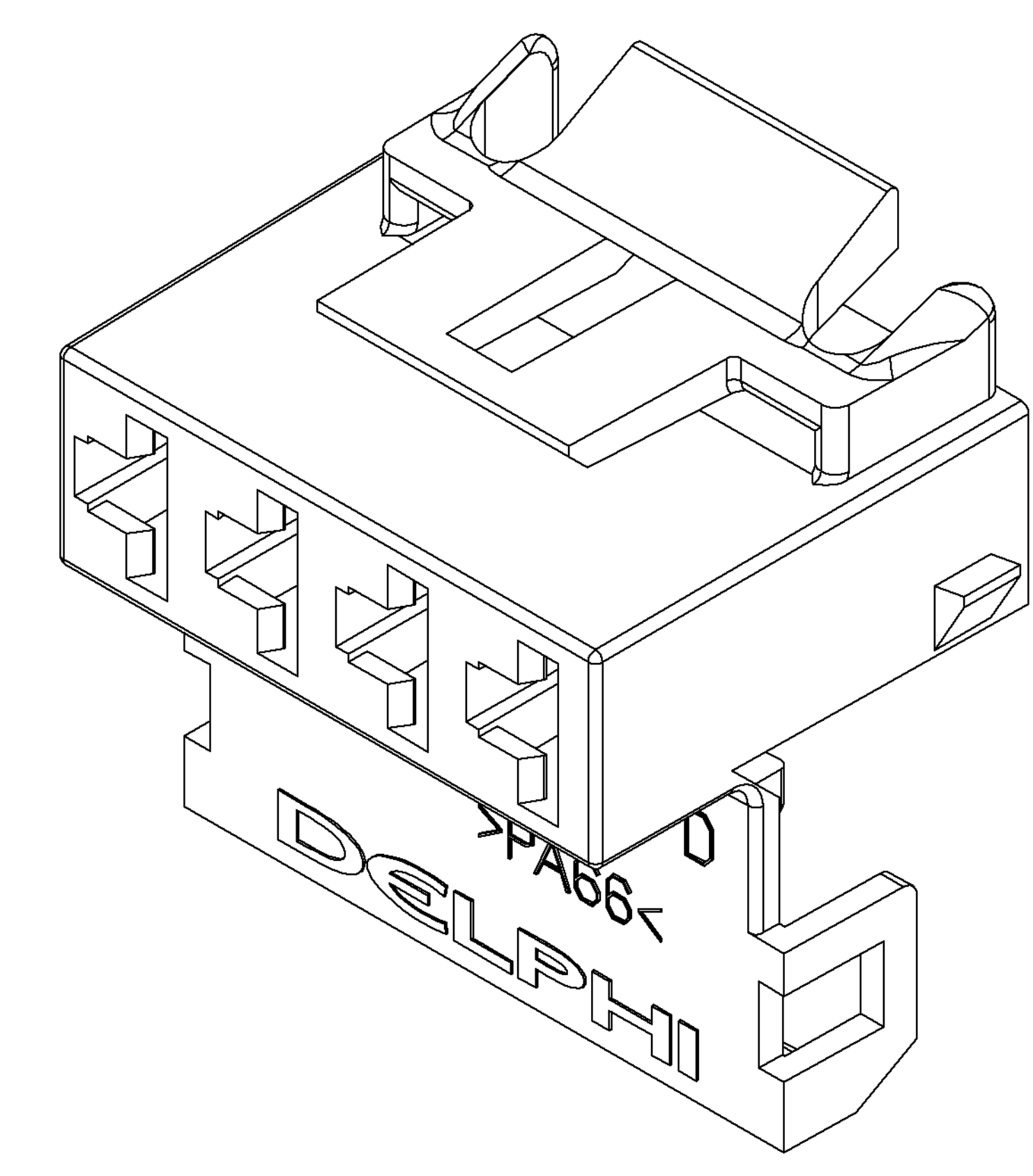
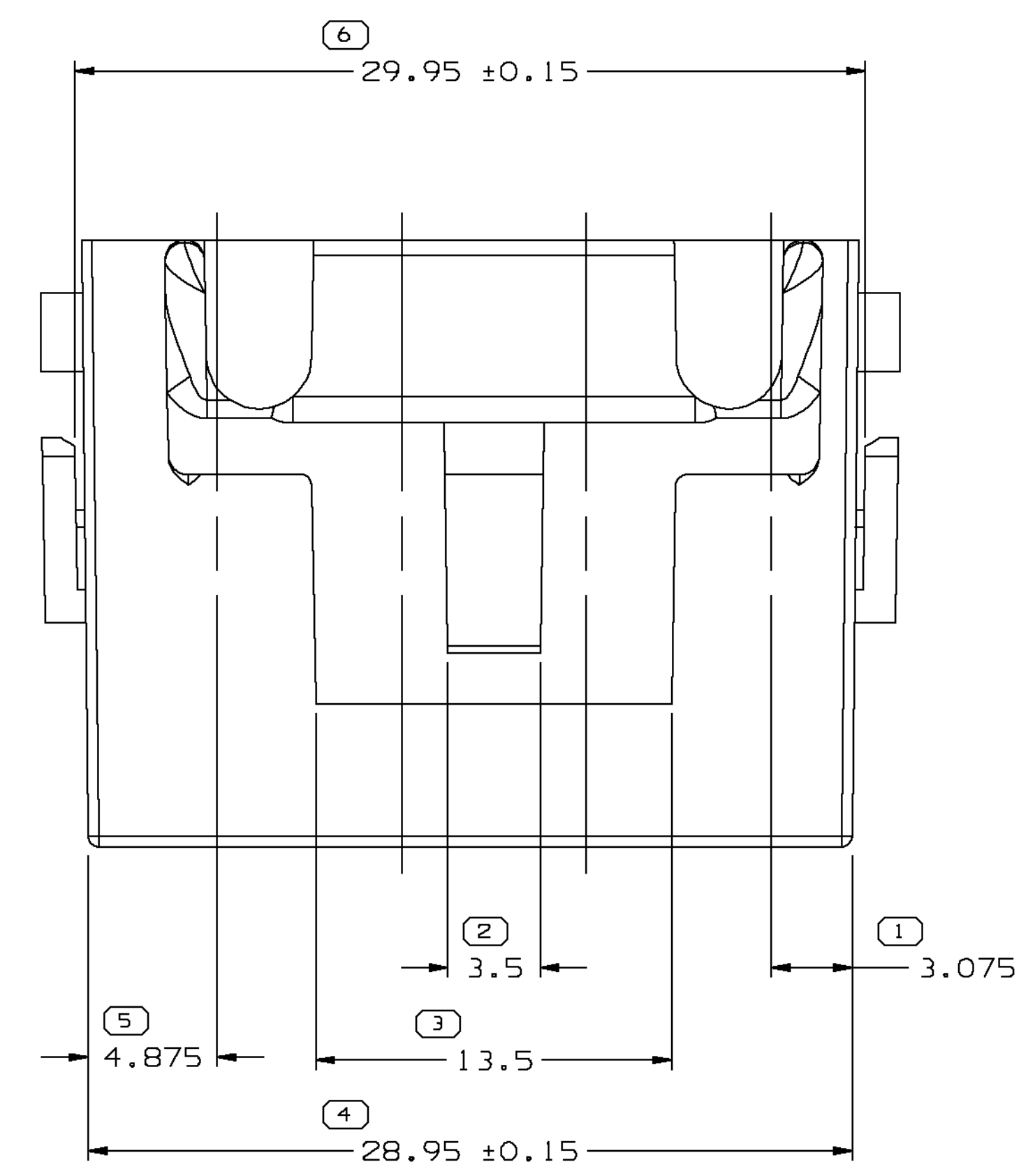


| SYMBOL DEFINITION  |  | MISSING SYMBOLS                  |                          | DWG STATUS |     |     |     | REVISION HISTORY |      |                                 |  | AUTH |  | DR     |    | APVD |    |  |
|--|--|----------------------------------|--------------------------|------------|-----|-----|-----|------------------|------|---------------------------------|--|------|--|--------|----|------|----|--|
| A DIMENSION WITHOUT AN INSPECTION REPORT SYMBOL DOES NOT REQUIRE INSPECTION. IT MAY BE CONTROLLED ON THE INDIVIDUAL COMPONENT DRAWING. |  | TOTAL NO OF INSPECTIONS REQUIRED | NO MISSING SYMBOL NUMBER | DATE       | STG | REV | W/P | CHG              | ZONE |                                 |  |      |  |        |    |      |    |  |
|  |  | 21                               |                          | 08JL02     | R   | 09  | -   | -                |      | MAT'L SPEC WAS R0067547 PA6 BLK |  |      |  | 227649 | HH | EOV  | JH |  |
|  |  | LAST NO. USED                    |                          |            |     |     |     |                  |      |                                 |  |      |  |        |    |      |    |  |
|  |  | 16                               |                          |            |     |     |     |                  |      |                                 |  |      |  |        |    |      |    |  |



NOTES

- UNLESS OTHERWISE SPECIFIED AND/OR INDICATED: DIMENSIONS ARE TO FACE OF VIEW SHOWN AND AUTOMATICALLY ROUNDED BY COMPUTER FOR INSPECTION (SEE MATH MODEL FOR PRECISE DIMENSIONS). FOR ALL OTHER DIMENSIONS NOT SHOWN BUT REQUIRED FOR TOOL BUILD, SEE MATH MODEL FOR PRECISE TOOL PATH DATA.
- MATING COMPONENTS OR EQUIVALENT: DELCO PRODUCTS
- THIS PART ACCEPTS THE FOLLOWING COMPONENTS OR EQUIVALENT: CAVITIES TO ACCEPT 12015869 TERMINAL OR EQUIVALENT.
- THIS PART IS NOT CONTROLLED FOR AUTOMATIC FEEDING.
- SEE DRAWING 15422779 FOR MATING COMPONENT INFORMATION (NOTE THIS INFORMATION ONLY REPRESENTS IDEALLY HOW THE MATING COMPONENT SHOULD BE DESIGNED)
- MATERIAL RECYCLING CODE >PA66< PER SAE J1344. (2.3)x(0.1) RAISED CHARACTERS AS SHOWN TO BE LOCATED ON ANY EXTERIOR SURFACE. OPTIONAL CONSTRUCTION TO BE NO MATERIAL RECYCLING CODE.
- (2.3)x(0.1) RAISED DELPHI CORPORATE BRAND TO BE LOCATED ON ANY EXTERIOR SURFACE, PREFERABLY VISIBLE AT FINAL ASSEMBLY. OPTIONAL CONSTRUCTION TO BE "FED" OR NO LOGO.

| <p>6 PROCESS SENSITIVE DIMENSION</p> <p>DIMENSIONS ENCLOSED IN ( ) INDICATE REFERENCE DIMENSIONS AND NO TOLERANCE LIMITS ARE ESTABLISHED</p>  |                                      | <p>THIRD ANGLE PROJECTION</p> <p>DO NOT SCALE</p> <p>USE MATH DATA</p> |                                      |              |       |          |      |          |      |           |      |            |      |            |      |            |      |            |    |            |      |   |  |
|---|--------------------------------------|--|--------------------------------------|--------------|-------|----------|------|----------|------|-----------|------|------------|------|------------|------|------------|------|------------|----|------------|------|---|--|
| <p>CHART E1</p> <table border="1"> <tr> <th>DIMENSIONAL RANGE (MM)</th> <th>TOLERANCE UNLESS OTHERWISE SPECIFIED</th> </tr> <tr> <td>FROM 0 TO 20</td> <td>±0.15</td> </tr> <tr> <td>20 TO 30</td> <td>±0.2</td> </tr> <tr> <td>30 TO 70</td> <td>±0.3</td> </tr> <tr> <td>70 TO 100</td> <td>±0.4</td> </tr> <tr> <td>100 TO 150</td> <td>±0.5</td> </tr> <tr> <td>150 TO 200</td> <td>±0.6</td> </tr> <tr> <td>200 TO 250</td> <td>±0.8</td> </tr> <tr> <td>250 TO 300</td> <td>±1</td> </tr> <tr> <td>300 TO 400</td> <td>±1.2</td> </tr> </table> |                                      | DIMENSIONAL RANGE (MM)   | TOLERANCE UNLESS OTHERWISE SPECIFIED | FROM 0 TO 20 | ±0.15 | 20 TO 30 | ±0.2 | 30 TO 70 | ±0.3 | 70 TO 100 | ±0.4 | 100 TO 150 | ±0.5 | 150 TO 200 | ±0.6 | 200 TO 250 | ±0.8 | 250 TO 300 | ±1 | 300 TO 400 | ±1.2 | <p>UNLESS OTHERWISE SPECIFIED</p> <p>THIS DOCUMENT IS IN ACCORDANCE WITH ASME Y14.5M-1994 AS AMENDED BY THE 2003 GLOBAL DIMENSIONING AND TOLERANCING ADDENDUM - 1997. ALL DIMENSIONAL TOLERANCES AND RELATED DATUMS APPLY UNLESS OTHERWISE SPECIFIED. THIS DOCUMENT DOES NOT APPLY WHEN RELATIONSHIP BETWEEN FEATURES IS ESTABLISHED BY ORIENTATION OR LOCATION TOLERANCES. SEPARATE POSITION CALLOUTS MAY BE ISSUED SEPARATELY, REGARDLESS OF DATUM REFERENCE.</p> |  |
| DIMENSIONAL RANGE (MM)  | TOLERANCE UNLESS OTHERWISE SPECIFIED |  |                                      |              |       |          |      |          |      |           |      |            |      |            |      |            |      |            |    |            |      |   |  |
| FROM 0 TO 20  | ±0.15                                |  |                                      |              |       |          |      |          |      |           |      |            |      |            |      |            |      |            |    |            |      |   |  |
| 20 TO 30  | ±0.2                                 |  |                                      |              |       |          |      |          |      |           |      |            |      |            |      |            |      |            |    |            |      |   |  |
| 30 TO 70  | ±0.3                                 |  |                                      |              |       |          |      |          |      |           |      |            |      |            |      |            |      |            |    |            |      |   |  |
| 70 TO 100   | ±0.4                                 |  |                                      |              |       |          |      |          |      |           |      |            |      |            |      |            |      |            |    |            |      |   |  |
| 100 TO 150  | ±0.5                                 |  |                                      |              |       |          |      |          |      |           |      |            |      |            |      |            |      |            |    |            |      |   |  |
| 150 TO 200  | ±0.6                                 |  |                                      |              |       |          |      |          |      |           |      |            |      |            |      |            |      |            |    |            |      |   |  |
| 200 TO 250  | ±0.8                                 |  |                                      |              |       |          |      |          |      |           |      |            |      |            |      |            |      |            |    |            |      |   |  |
| 250 TO 300  | ±1                                   |  |                                      |              |       |          |      |          |      |           |      |            |      |            |      |            |      |            |    |            |      |   |  |
| 300 TO 400  | ±1.2                                 |  |                                      |              |       |          |      |          |      |           |      |            |      |            |      |            |      |            |    |            |      |   |  |

|  |                 |
|--|-----------------|
| <b>DELPHI</b>  |                 |
| DELPHI PACKARD ELECTRIC SYSTEMS<br>WARREN, OH  |                 |
| DR   | DATE            |
| APVD1 A. M. SPISAK   | 17DE80          |
| APVD2 E. DECKEC  | 17DE80          |
| APVD3 F. MLAKAR  | 17DE80          |
| APVD4  |                 |
| SUBSTANCES OF CONCERN AND RECYCLED CONTENT PER DELPHI 1049001 POTENTIELL GEFÄHRLICHE STOFFE UND REZYKLATANTEIL (RECYCLED CONTENT PER DELPHI 1049001) |                 |
| MATERIAL M3592001 PA66 1M HS BLK   |                 |
| DRAWING NAME<br>CONN 4F M/P 630 BLK  |                 |
| DRAWING NUMBER<br>12015664   |                 |
| SIZE A0  | SCALE 5:1       |
| FRAME NO 1   | SHEET NO 1 OF 1 |
| REV 1  | DATE 09         |