

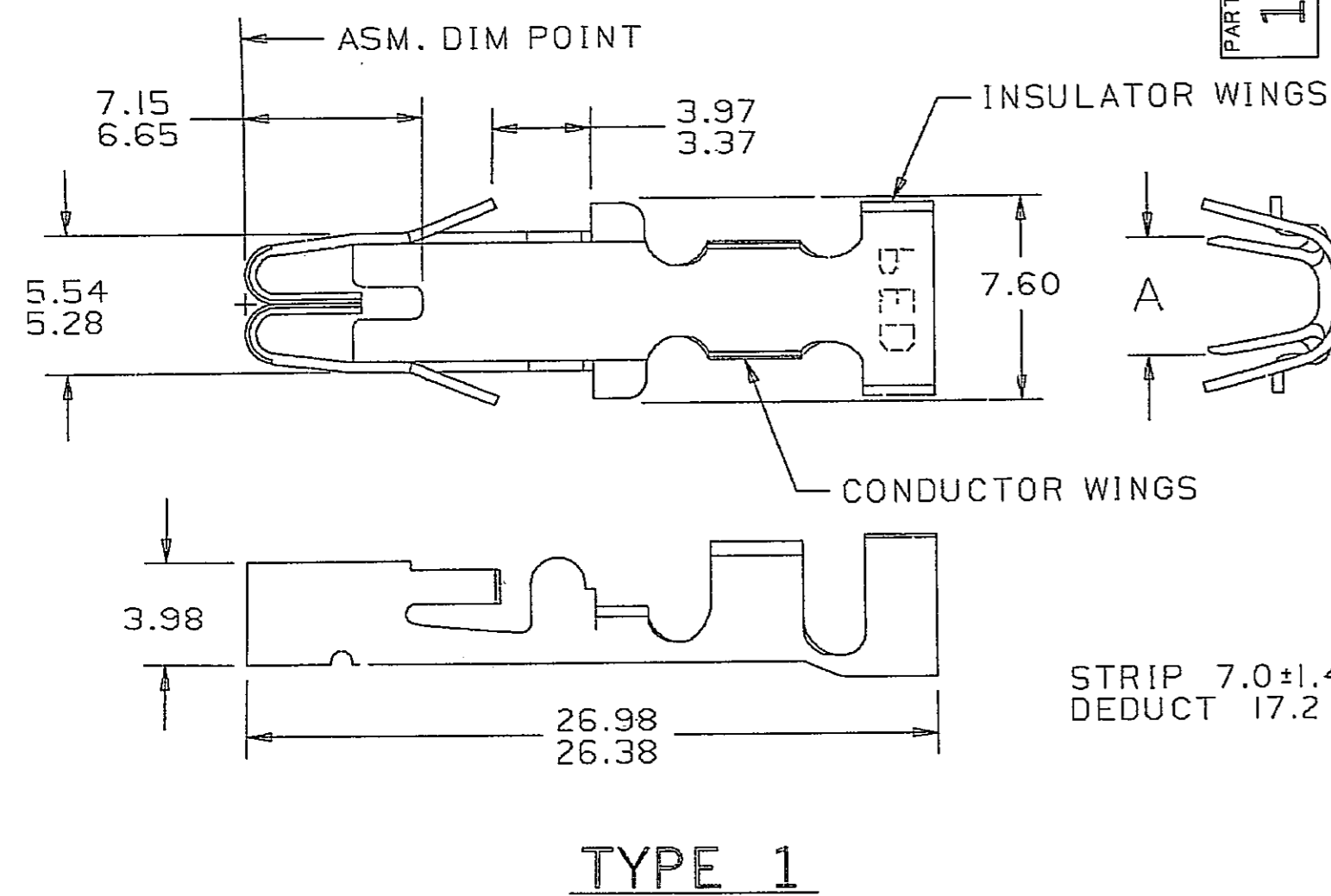
D

THIS DRAWING AND DESIGN HEREON CONSTITUTE A PROPRIETARY DESIGN OF PACKARD ELECTRIC DIVISION AND IS NOT TO BE DUPLICATED OR REPRODUCED WITHOUT AUTHORITY OF PACKARD ELECTRIC DIVISION.

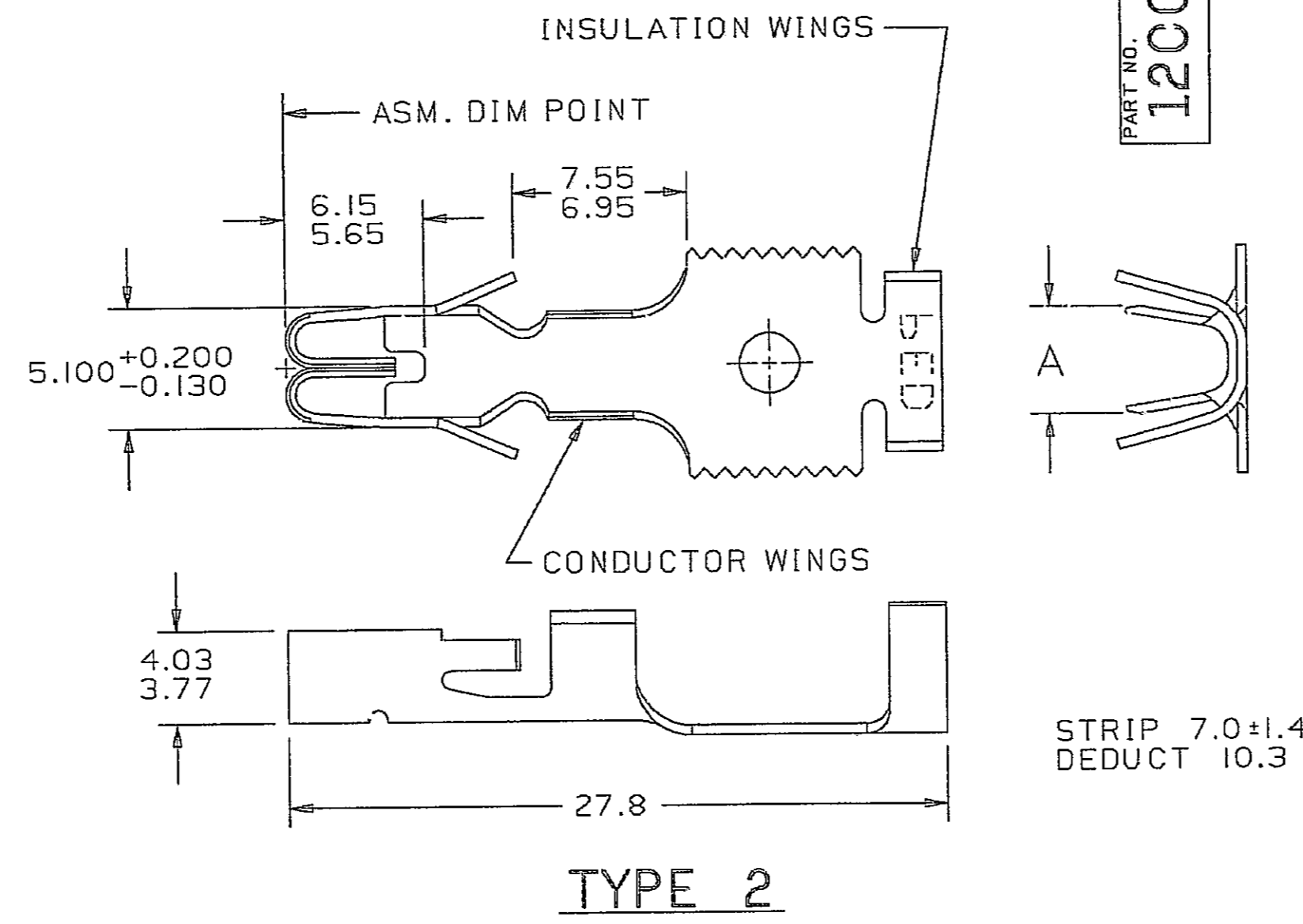
DO NOT SCALE

PART NO. 1200 4552

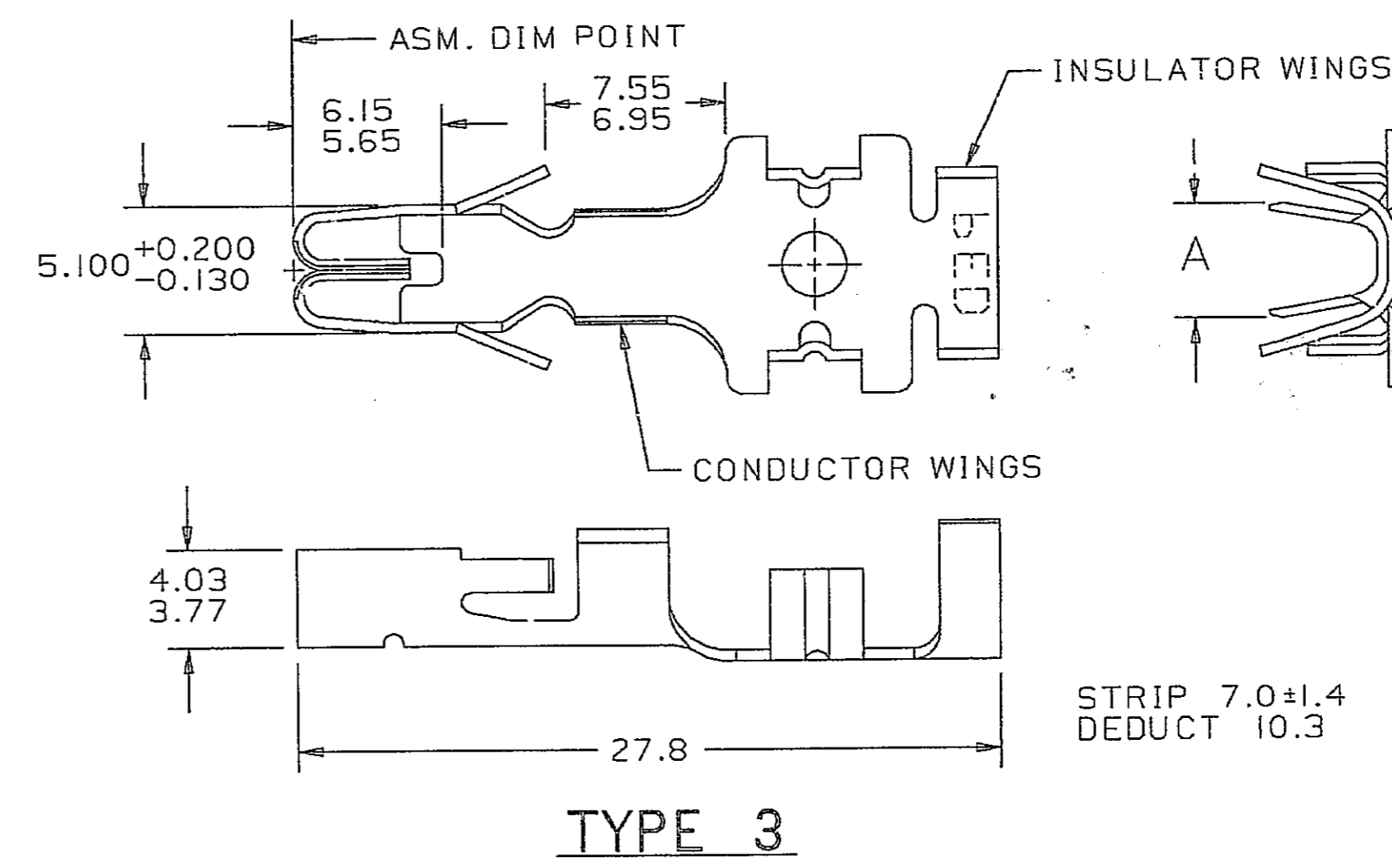
PART NO. 1200 4552



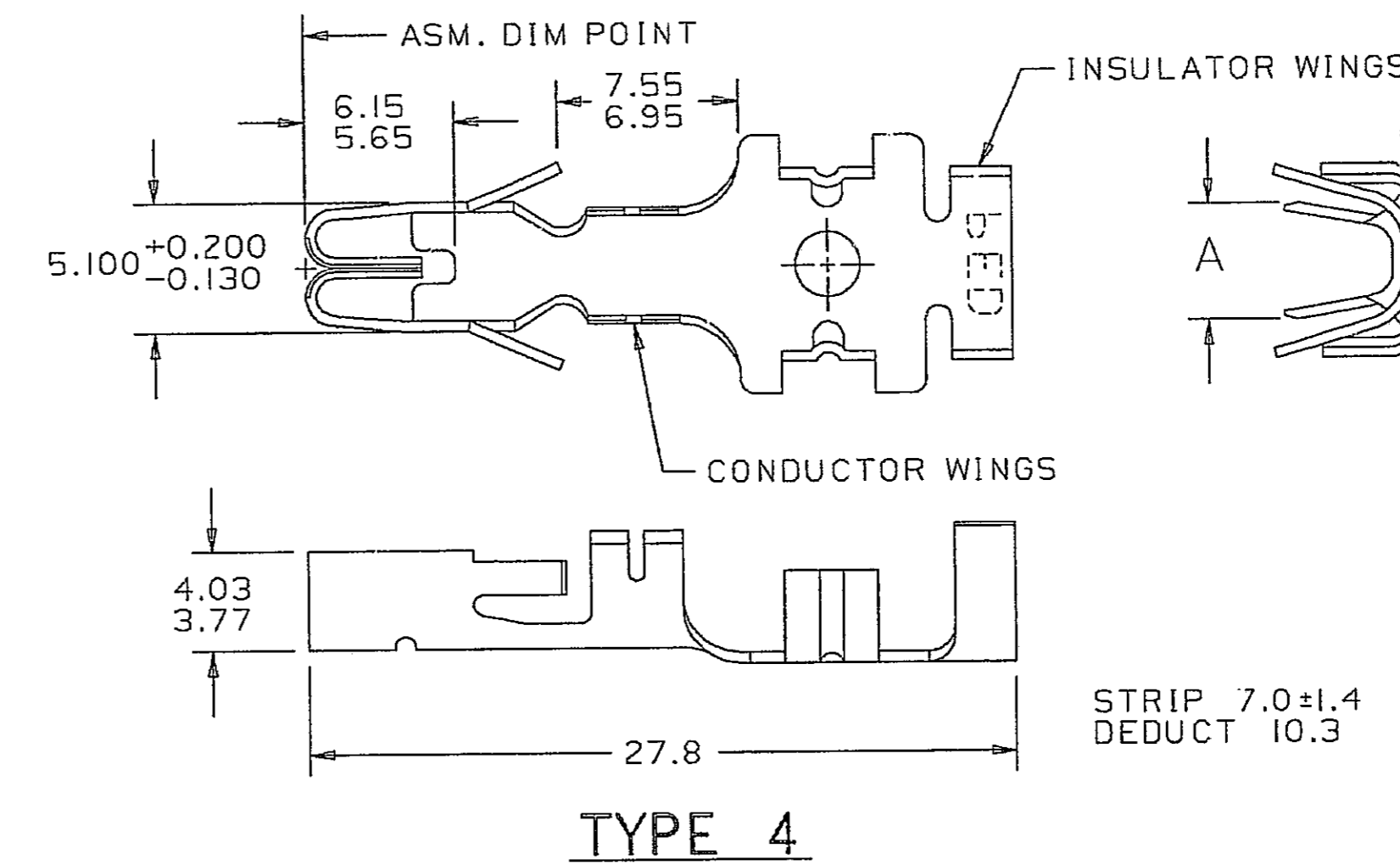
TYPE 1



TYPE 2



TYPE 3



TYPE 4

PACKARD ELECTRIC DIVISION  
GENERAL MOTORS CORPORATION  
WARREN, OHIO

PART NO.	REV.	STATUS	MATERIAL	PART NO.	REV.	STATUS	TYPE	SIZE (MM <sup>2</sup> )	DIA.	I.D.	A
12089823	B		0.406 THK SAE CA 260 BRASS	12010636	A	F	1	2.0-1.0	3.95	15	4.4
			0.406 THK SAE CA 260 COPPER	12078138	B		4	2.0-1.0	3.95	15	3.3
			0.406 THK SAE CA 260 COPPER	12078136	B		4	5.0-3.0	5.10	11	4.6
12078033	B		0.406 THK SAE CA 260 BRASS				4	3.0	3.20	12	3.3
12078032	B		0.406 THK SAE CA 260 BRASS	12078137	A	B	4	2.0-1.0	3.95	15	3.3
12078031	B		0.406 THK SAE CA 260 BRASS				4	5.0-3.0	5.10	11	4.6
12066447	A	OBSOLETE	0.406 THK SAE CA 260 BRASS				2	0.8-0.5	3.10	19	3.8
12052443	B		0.406 THK SAE CA 260 BRASS				2	3.0	3.10	12	4.6
12052209	B		0.406 THK SAE CA 260 BRASS				1	3.0	3.10	12	4.6
12052208	B		0.406 THK SAE CA 260 BRASS				1	1.0	2.25	16	4.4
			0.406 THK SAE CA 195 COPPER	12048293	A	OBSOLETE	2	0.8-0.5	3.10	19	3.8
			0.406 THK SAE CA 195 COPPER	12048291	A		2	2.0-1.0	3.95	15	4.4
			0.406 THK SAE CA 195 COPPER	12048290	A		2	5.0-3.0	5.10	11	4.6
			0.406 THK SAE CA 195 COPPER	12048289	A	OBSOLETE	2	TWO 2.0-1.0	3.10	215	6.0
			0.406 THK SAE CA 195 COPPER	12048281	B		1	TWO 0.8-0.5	2.55	219	4.7
			0.406 THK SAE CA 195 COPPER	12048280	A	OBSOLETE	1	TWO 2.0-1.0	3.10	215	6.0
			0.406 THK SAE CA 195 COPPER	12048279	B		1	0.8-0.5	3.10	19	3.8
			0.406 THK SAE CA 195 COPPER	12048278	B		1	2.0-1.0	3.95	15	4.4
			0.406 THK SAE CA 195 COPPER	12048277	B		1	5.0-3.0	5.10	11	4.6
12020400	E		0.406 THK SAE CA 260 BRASS	12089953	B		1	5.0-3.0	5.10	11	4.6
12020338	D		0.406 THK SAE CA 260 BRASS	2010637	A	E	2	2.0-1.0	3.95	15	4.4
12020337	D		0.406 THK SAE CA 260 BRASS				2	5.0-3.0	5.10	11	4.6
12020336	E		0.406 THK SAE CA 260 BRASS	12089952	B		1	TWO 0.8-0.5	2.55	219	4.7
12020335	E		0.406 THK SAE CA 260 BRASS				1	TWO 2.0-1.0	3.10	215	6.0
12020334	E		0.406 THK SAE CA 260 BRASS	12089951	B		1	0.8-0.5	3.10	19	3.8
12020321	E		0.406 THK SAE CA 260 BRASS	2089950	B		1	2.0-1.0	3.95	15	4.4
12015373	E		0.406 THK SAE CA 260 BRASS				1	0.35-0.22	1.86	23	2.2
12004582	A	OBSOLETE	0.406 THK SAE CA 260 BRASS				3	TWO 0.8-0.5	2.55	219	4.7
12004581	A	OBSOLETE	0.406 THK SAE CA 260 BRASS				3	TWO 2.0-1.0	3.10	215	6.0
12004580	A	OBSOLETE	0.406 THK SAE CA 260 BRASS				3	0.8-0.5	3.10	19	3.1
12004579	A	OBSOLETE	0.406 THK SAE CA 260 BRASS				3	2.0-1.0	3.95	15	3.7
12004578	A	OBSOLETE	0.406 THK SAE CA 260 BRASS				3	5.0-3.0	5.10	11	4.6
12004562	D		0.406 THK SAE CA 260 BRASS				2	TWO 2.0-1.0	3.10	215	6.0
12004561	D		0.406 THK SAE CA 260 BRASS				2	TWO 0.8-0.5	2.55	219	4.7
12004560	E		0.406 THK SAE CA 260 BRASS				2	0.8-0.5	3.10	19	3.8
12004559	E	OBSOLETE	0.406 THK SAE CA 260 BRASS				2	2.0-1.0	3.95	15	4.4
12004558	D	OBSOLETE	0.406 THK SAE CA 260 BRASS				2	5.0-3.0	5.10	11	4.6
12004557	E	OBSOLETE	0.406 THK SAE CA 260 BRASS				1	TWO 0.8-0.5	2.55	219	4.7
12004556	E	OBSOLETE	0.406 THK SAE CA 260 BRASS				1	TWO 2.0-1.0	3.10	215	6.0
12004555	F	OBSOLETE	0.406 THK SAE CA 260 BRASS				1	0.8-0.5	3.10	19	3.8
12004554	F	OBSOLETE	0.406 THK SAE CA 260 BRASS				1	2.0-1.0	3.95	15	4.4
12004553	E	OBSOLETE	0.406 THK SAE CA 260 BRASS				1	5.0-3.0	5.10	11	4.6
PART NO.	REV.	STATUS	MATERIAL	PART NO.	REV.	STATUS	TYPE	SIZE (MM <sup>2</sup> )	DIA.	I.D.	A
			UNPLATED								±0.2
											CABLE

CABLE I.D. NUMBER (AS SPECIFIED IN CHART) IS LOCATED ON UNDERSIDE OF EACH TERMINAL.

■ INDICATES SERRATIONS IN CONDUCTOR WINGS.

▲ INDICATES MATERIAL (C260 ALLOY) IS TIN PLATED OVER COPPER PLATE.

● INDICATES MATERIAL (C195 ALLOY) IS SILVER PLATED OVER NICKEL PLATE.

○ INDICATES MATERIAL (C260 ALLOY) IS SILVER PLATED OVER NICKEL PLATE.

NOTE — CONTACT PACKARD ELECTRIC SALES DEPARTMENT CONCERNING CURRENT PRODUCT AVAILABILITY.

As of 06JL 90 this drawing is no longer being maintained on computer vision.

CAD CAM (JWP)

<b>METRIC</b>		THIRD ANGLE PROJECTION	
DIMENSIONS ARE IN MILLIMETERS UNLESS OTHERWISE SPECIFIED		ANGULAR ± 2°	
CODE NO. 6900	TOLERANCE UNLESS OTHERWISE SPECIFIED DECIMAL: ONE PLACE ± 0.3 TWO PLACE ± 0.15		
QC	SCALE NONE	DR.	
DWG. DATE 07JN78	SCALE NONE	CK R. SEBRELL	DATE 03AU84
CD.X.TERM.12004552.00.01	APPR. R.D. KEARNS	DATE 040C84	
REFERENCE NO. 12004552 "D" SIZE SHT. #1, #2, & #6	APPR. R.D. KEARNS	DATE 040C84	
MATERIAL SPEC. SEE CHART			
NAME TERM F PAC/ON III			
PART NO. 1200 4552	SIZE D		
OUTLINE DRAWING SHEET 1 OF 3			

C05D1974

PACKARD ELECTRIC