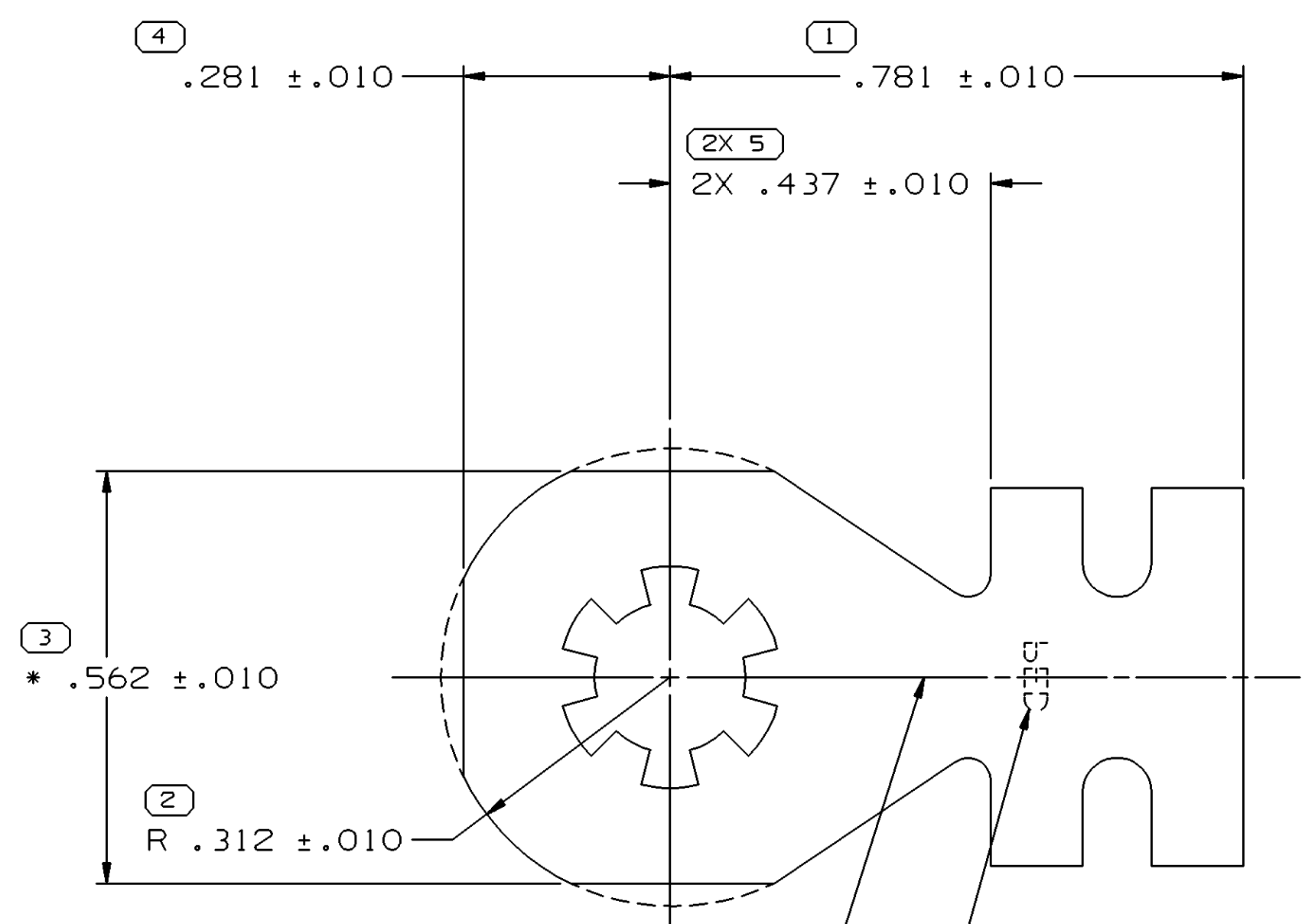


SYMBOL DEFINITION		MISSING SYMBOLS	
A DIMENSION WITHOUT AN INSPECTION REPORT SYMBOL DOES NOT REQUIRE INSPECTION. IT MAY BE CONTROLLED ON THE INDIVIDUAL COMPONENT DRAWING.	TOTAL NO OF INSPECTIONS REQUIRED	NO MISSING SYMBOL NUMBER	21
	LAST NO. USED		19

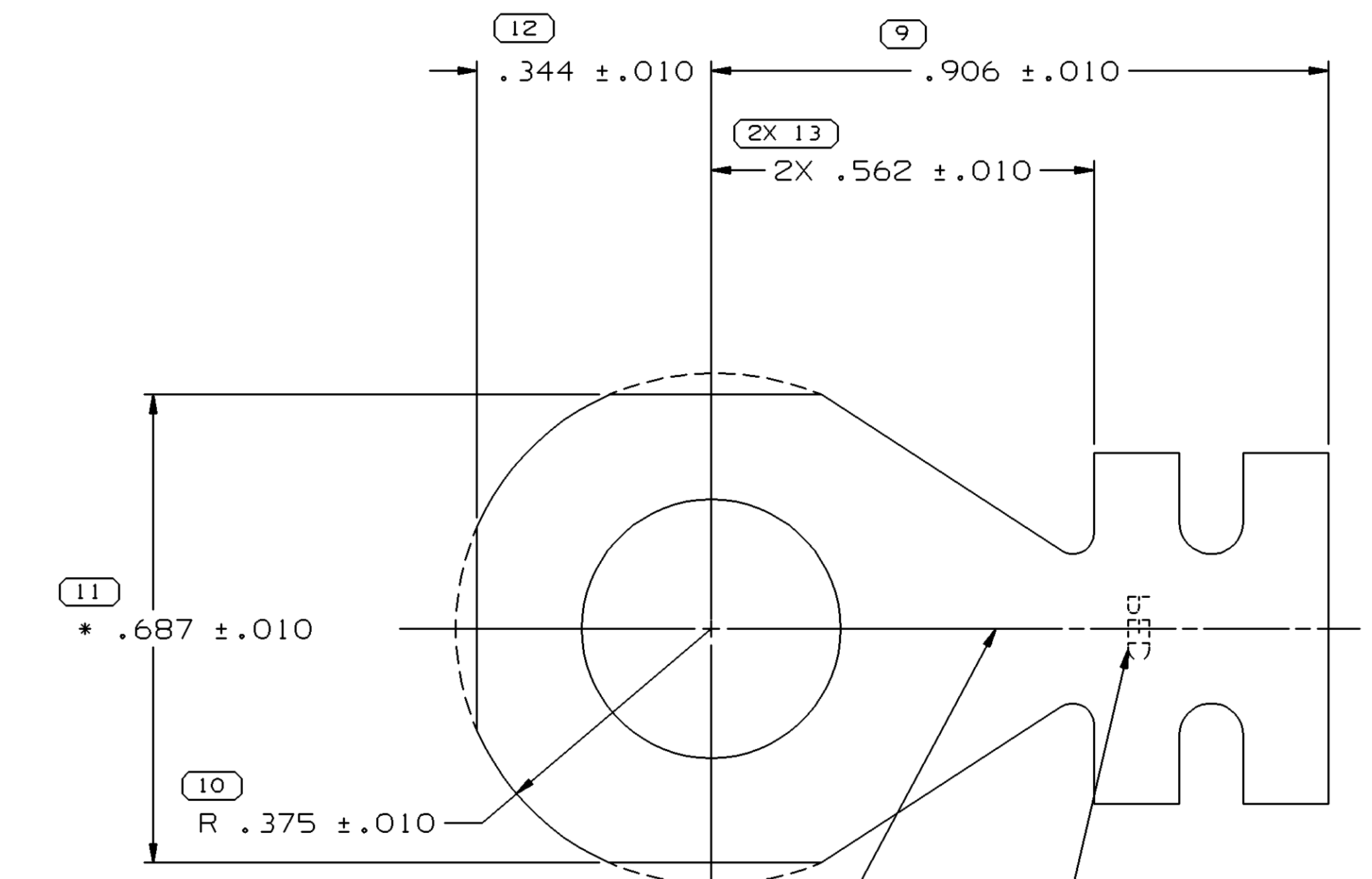
DWO STATUS				REVISION HISTORY				AUTH	DR	APVD	APVD
DATE	STG	REV	N/P	CHG	ZONE						
10MR04	R	01	-	-				252466	JTV	FKV	EH



(17) STAMP "1.D" NUMBER ON UNDERSIDE IN THIS AREA WITH .040 MIN HIGH CHARACTERS

(16) STAMP "PED" ON UNDERSIDE IN THIS AREA WITH .040 MIN HIGH CHARACTERS WHEN INDICATED IN CHART.

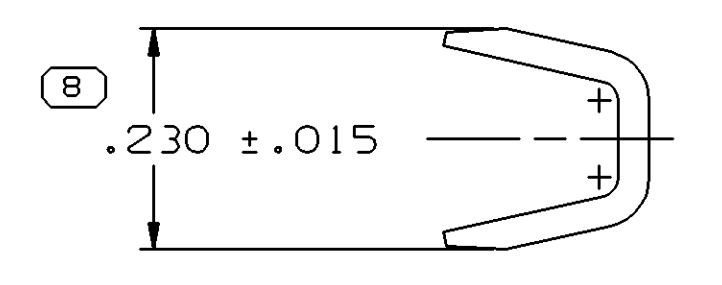
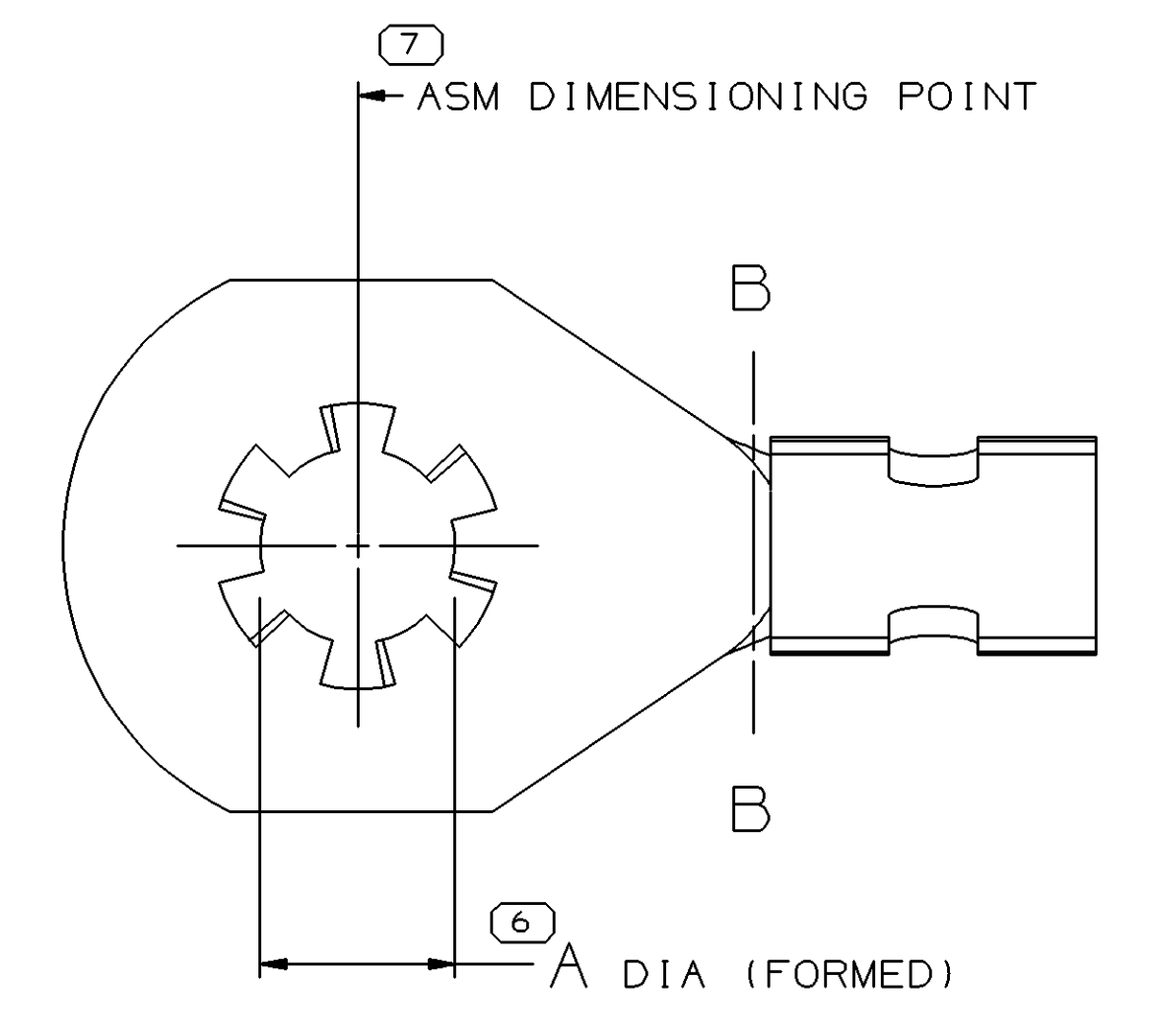
TYPE 101  
BLANK VIEW (APPROX)



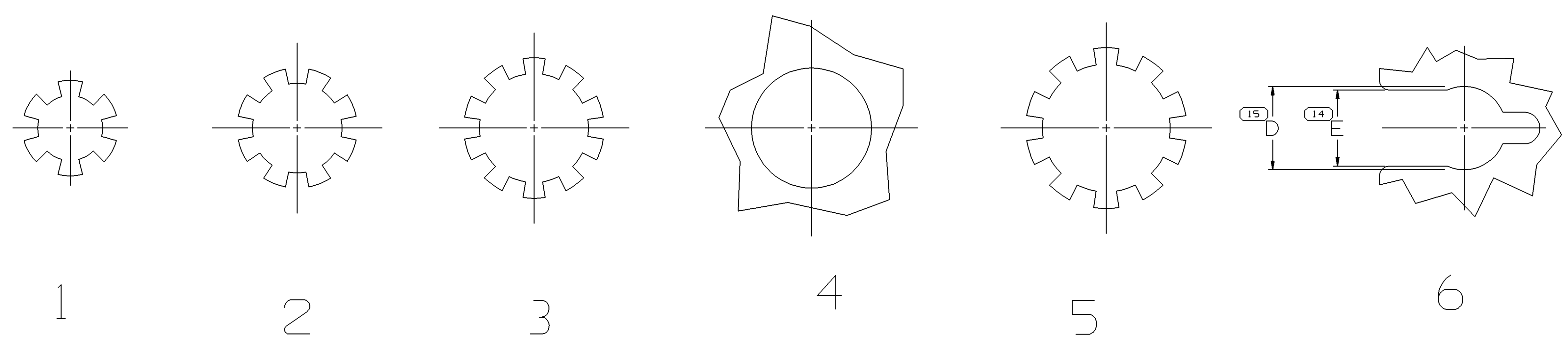
(19) STAMP "1.D" NUMBER ON UNDERSIDE IN THIS AREA WITH .040 MIN HIGH CHARACTERS WHEN INDICATED IN CHART

(18) STAMP "PED" ON UNDERSIDE IN THIS AREA WITH .040 MIN HIGH CHARACTERS.

TYPE 102  
BLANK VIEW (APPROX)



VIEW TO B-B



HOLE CONSTRUCTIONS (BLANK)

- NOTES
- UNLESS OTHERWISE SPECIFIED AND/OR INDICATED: DIMENSIONS ARE TO FACE OF VIEW SHOWN AND AUTOMATICALLY ROUNDED BY COMPUTER FOR INSPECTION. (SEE MATH MODEL FOR PRECISE DIMENSIONS.) FOR ALL OTHER DIMENSIONS NOT SHOWN BUT REQUIRED FOR TOOL BUILD, SEE MATH MODEL FOR PRECISE TOOL PATH DATA.
  - \* DENOTES DIMENSION IS TO BE MADE AT CUT OFF & CRIMP DIE
  - POSITION OF TABS MAY BE ROTATED ABOUT C OF HOLE
  - CRIMP WINGS ARE IDENTICAL
  - CRIMP WING ARE FOR 6.0 - 3.0 MM<sup>2</sup> BRAIDED GROUND STRAP

PART NO	REV	N/P	STATUS	MAT'L SIZE	MAT'L SPEC	PART NO	REV	N/P	STATUS	MAT'L SPEC	ID	TYPE	HOLE CONST	A	D	E	OC SPEC
12004474	A	-	OBSOLETE	.032 X 1.062	M1525134	12004475	B1	-	-	M3649134	102	5	4	.500			OC-C-1030
				.032 X 1.062		12004481	C1	-	-	M3649129	101	4	4	.343			OC-C-1030
				.032 X 1.250		12004475	B1	-	-	M3649134	102	5	4	.405			OC-C-1060
				.032 X 1.250		12004473	C1	-	-	M3649134	102	4	4	.405			OC-C-1030
				.032 X 1.250		12004472	C1	-	-	M3649134	102	4	4	.471			OC-C-1030
				.032 X 1.062		12004471	C	-	OBSOLETE	M3649129	101	6	6	.345	.296		OC-C-1029
				.032 X 1.062		12004470	C	-	OBSOLETE	M3649129	101	6	6	.264	.241		OC-C-1029
				.032 X 1.062		12004469	C1	-	-	M3649129	101	4	4	.280			OC-C-1030
12004462	-	-	OBSOLETE	.032 X 1.062	M1525129	12004468	B1	-	-	M3600129	101	3	3	.343			OC-C-1060
12004465	B	-	OBSOLETE	.032 X 1.062	M1525129	12004466	B1	-	-	M3600129	101	2	2	.280			OC-C-1060
12004463	A	-	OBSOLETE	.032 X 1.062	M1525129	12004464	B3	-	-	M3600129	101	1	1	.202			OC-C-1060

DIA	A/D	STANDARD	METRIC
.500	1/2		
.471	7/16		
.405	3/8	M10	
.343	5/16	M8	
.280	1/4	M6.3	
.202	#10		
		STANDARD	METRIC
		SCREW/STUD SIZE	

DIMENSIONAL RANGE (IN)	CHART	Z
FROM 0		>500
TO 500		
TOLERANCE UNLESS OTHERWISE SPECIFIED		
		±.005
		±.010
ANGULAR TOLERANCE 12°		

PART DRAWING	
STYLE	
VOLUME (WP)	DISTR CODE
ROUTING	6900
UNLESS OTHERWISE SPECIFIED	
THIS DOCUMENT IS IN ACCORDANCE WITH ASME Y14.5M-1994	
AS AMENDED BY THE DIMENSIONAL DIMENSIONING AND TOLERANCING ADDENDUM-2003. SEPARATE PATTERNING OF FEATURES MAY BE OBTAINED SEPARATELY. REWORKERS OF DATUM REFERENCES.	
ALL DIMENSIONS ARE IN INCHES	
REFERENCE	
THIRD ANGLE PROJECTION	DO NOT SCALE
USE MATH DATA	

**DELPHI**  
DELPHI PACKARD ELECTRIC SYSTEMS  
WARREN, OH

DR	DATE
APVD1 JOSE LUIS TAPIA	10MR04
APVD2 FRANCISCO KOPCA	10MR04
APVD3 ERIC HAROLDSON	11MR04
APVD4	
APVD5	

SUBSTANCES OF CONCERN AND RECYCLED CONTENT PER DELPHI 10949001

MATERIAL SEC CHART

DRAWING NAME: TAXI TERM RING STR

DRAWING NUMBER: 12004462

SIZE: A0 SCALE: 5:1 FRAME NO: 1 OF 1 SHEET NO: 1 OF 2 REV: 01