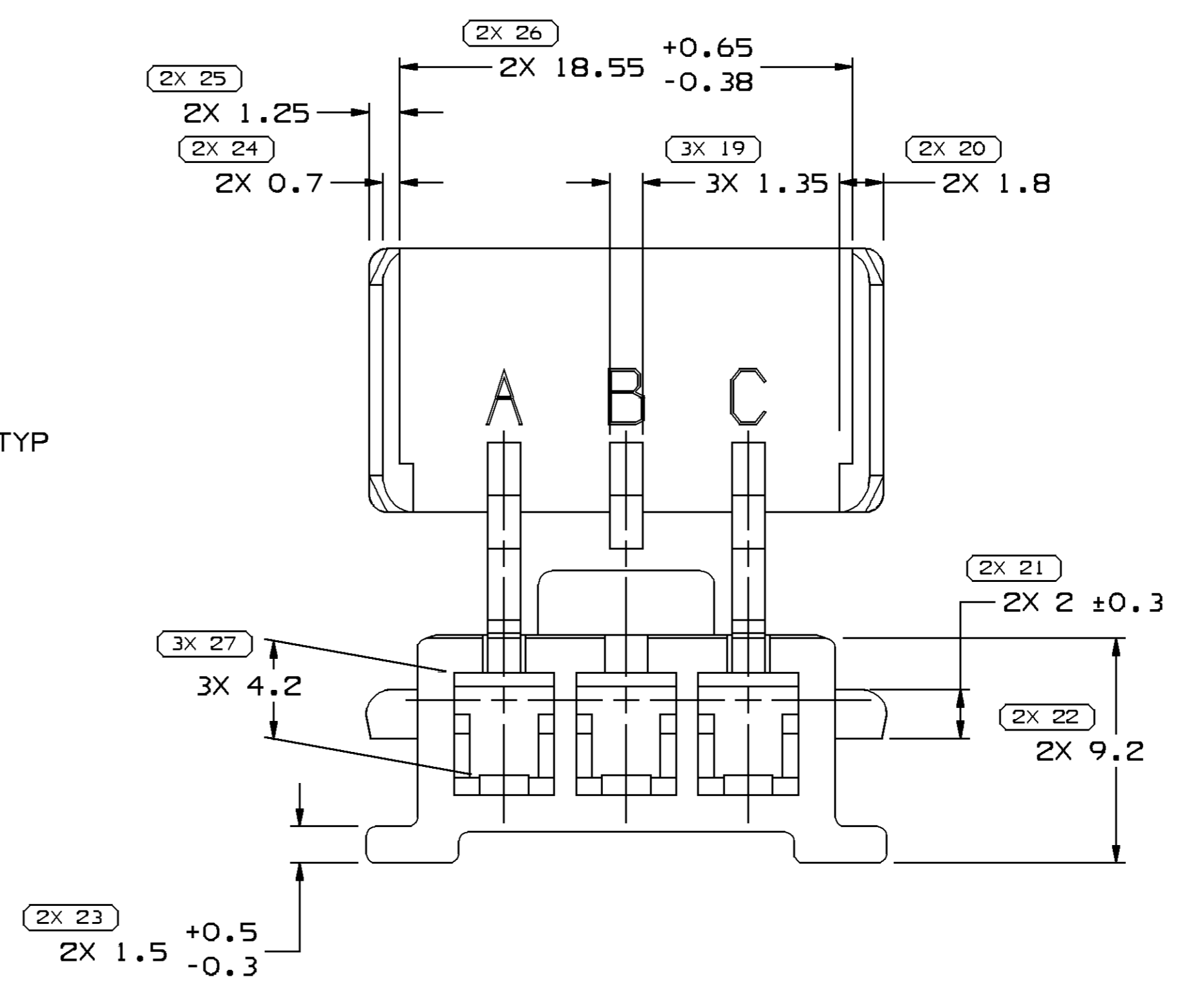
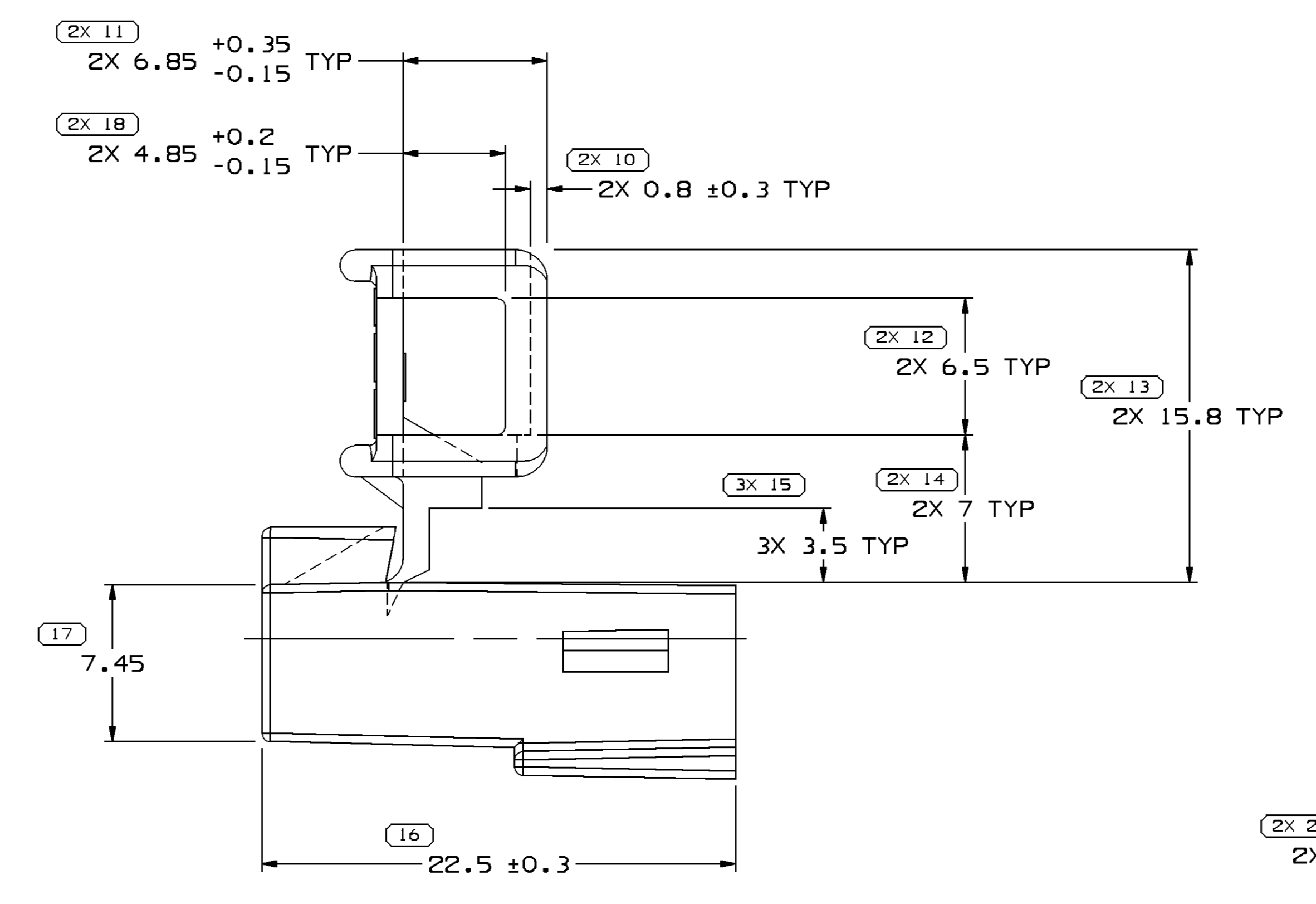
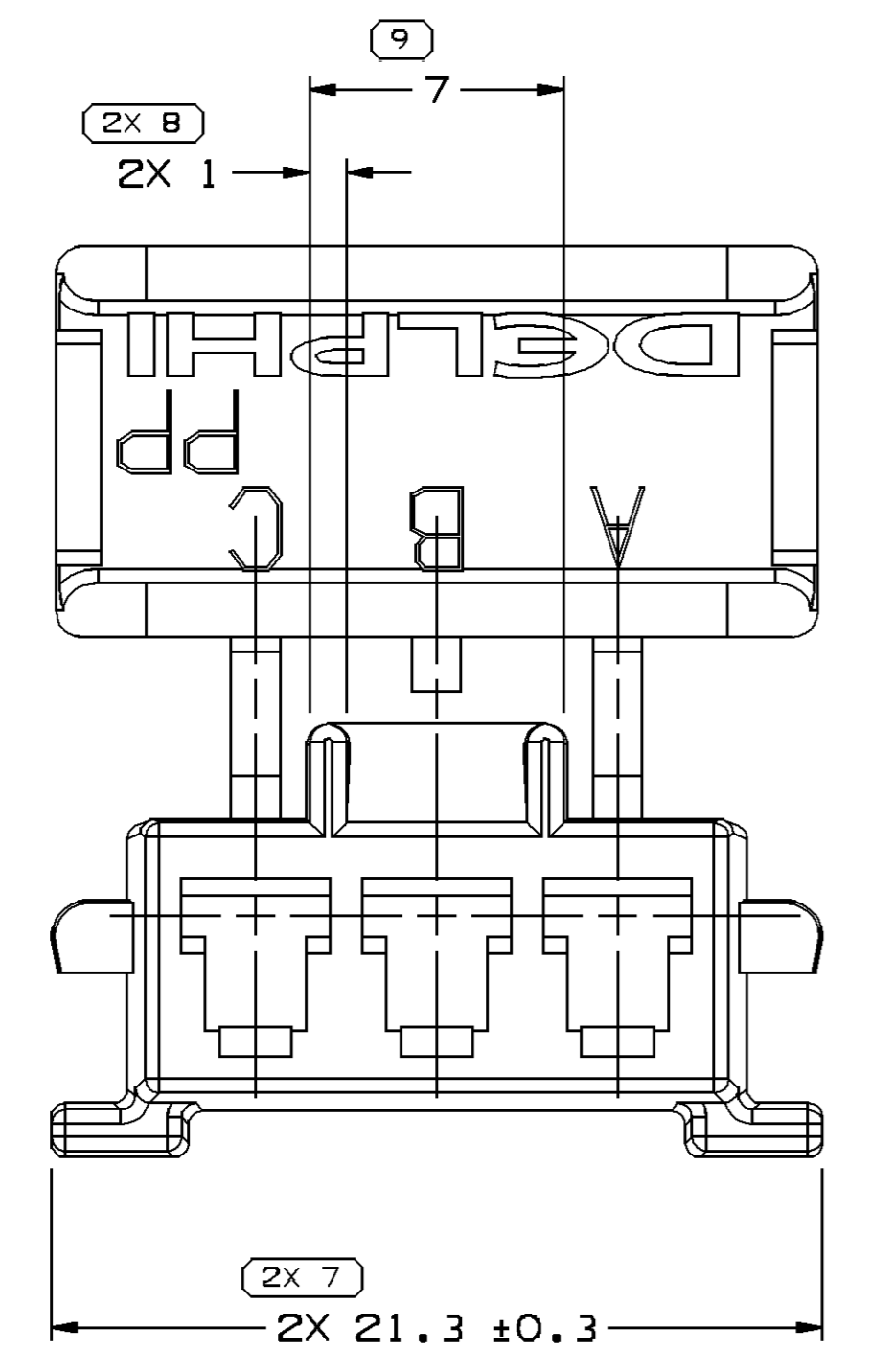
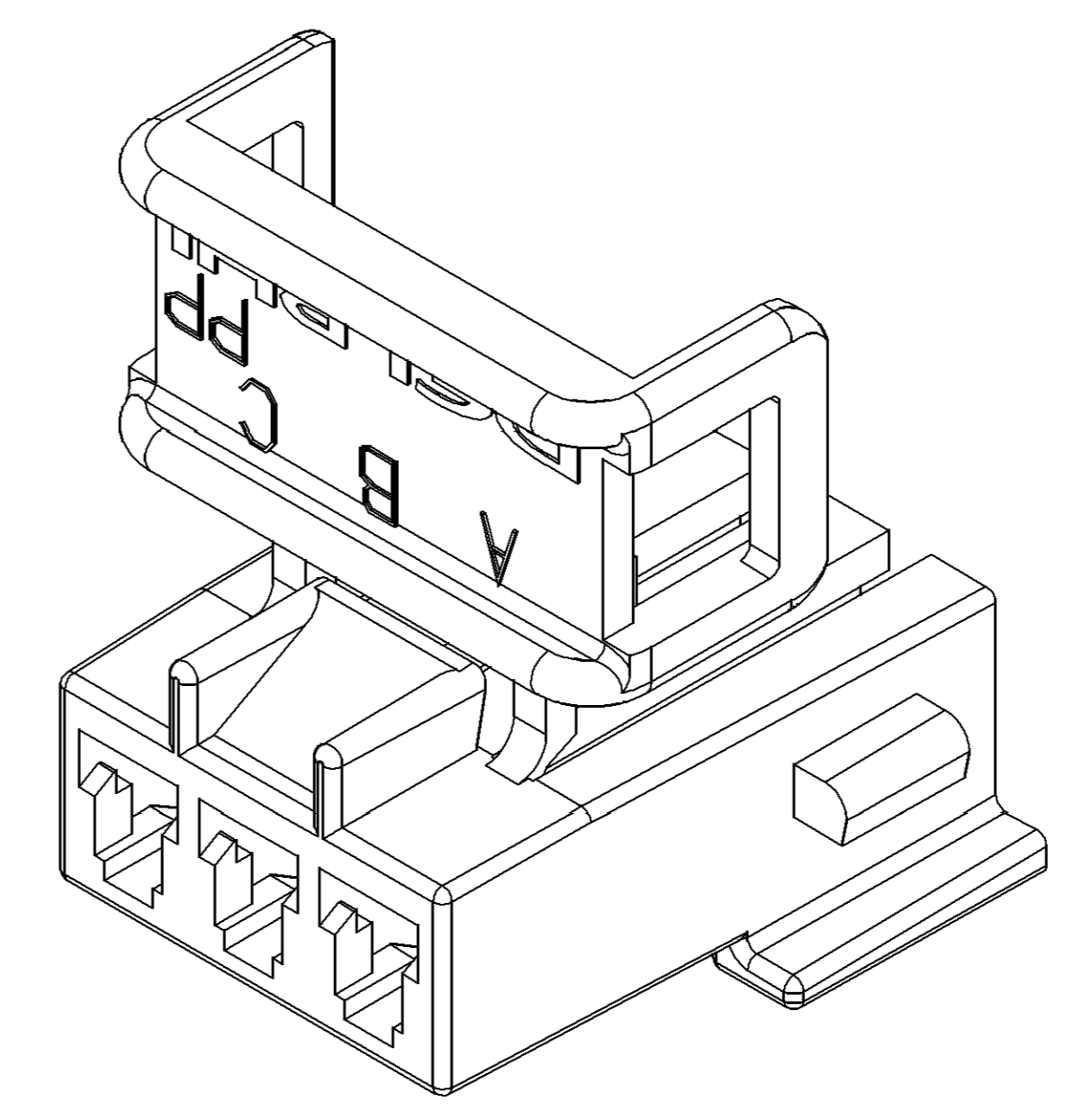
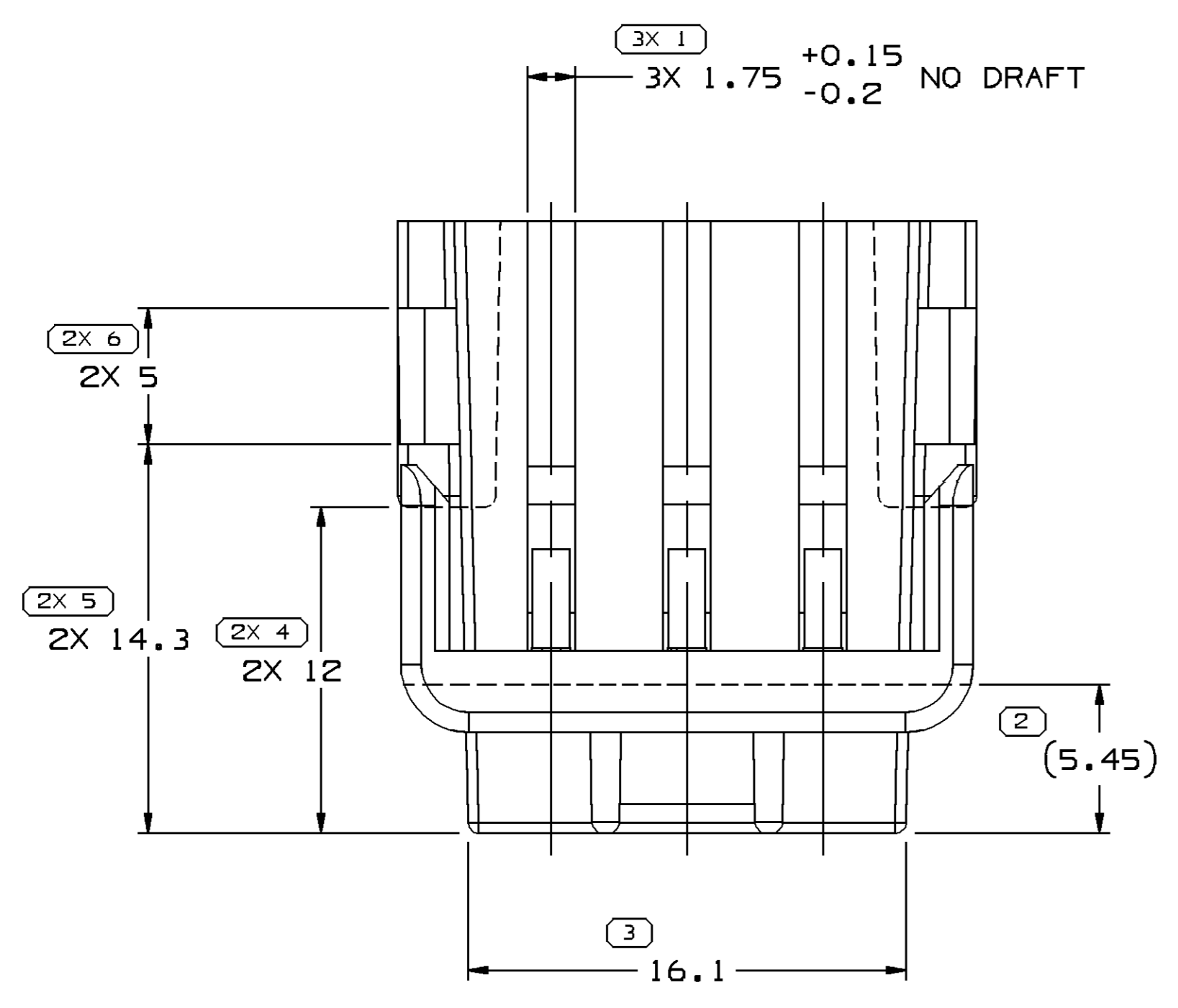


SYMBOL DEFINITION		TOTAL NO OF INSPECTIONS REQUIRED	MISSING SYMBOLS
A DIMENSION WITHOUT AN INSPECTION REPORT SYMBOL DOES NOT REQUIRE INSPECTION. IT MAY BE CONTROLLED ON THE INDIVIDUAL COMPONENT DRAWING.		53	NO MISSING SYMBOL NUMBER
LAST NO. USED		27	

DATE STATUS					ZONE		REVISION HISTORY		AUTH	DR	AP/VD	AP/VD
DATE	STO	REV	N/P	CHR								
13MR02	R	01	-	-			ALL PARTS - REDRAWN TO PD, ADDED OPT CONSTRUCTION AND MATERIAL RECYCLING CODE NOTES & REVISED MATERIAL SPEC	222568	EOV	EOV	RC	
31JA03	R	02	-	-			ALL PARTS - ADDED NOTE B	235964	AFM	AFM	RC	
19AU04	R	03	-	-			ALL PARTS - UPDATED RECYCLE CODE NOTE AND UPDATED FORMAT 12066440 - MATERIAL WAS M0661008 PP BLU 12020397 - MATERIAL WAS M2097001 PP BLK	257394	EES	EES	ET	
19SE05	R	04	-	-			ALL PARTS - REVISED CAVITY DESIGN	272056	RH	RH	MGR	
03AP07	R	05	-	-			12066440 - OBSOLETE	401057	ACB	FRG	WTM	



- NOTES
- UNLESS OTHERWISE SPECIFIED AND/OR INDICATED: DIMENSIONS ARE TO FACE OF VIEW SHOWN AND AUTOMATICALLY ROUNDED BY COMPUTER FOR INSPECTION (SEE MATH MODEL FOR PRECISE DIMENSIONS). FOR ALL OTHER DIMENSIONS NOT SHOWN BUT REQUIRED FOR TOOL BUILD, SEE MATH MODEL FOR PRECISE TOOL PATH DATA.
  - MATERIAL RECYCLING CODE PER ISO 11469. (2,3)X(0,1) RAISED CHARACTERS AS SHOWN TO BE LOCATED ON ANY EXTERIOR SURFACE. OPTIONAL CONSTRUCTION TO BE NO MATERIAL RECYCLING CODE.
  - THIS PART IS NOT CONTROLLED FOR AUTOMATIC FEEDING.
  - REFERENCE MATING COMPONENTS OR EQUIVALENT: CONNECTOR 12020398
  - THIS PART ACCEPTS THE FOLLOWING COMPONENTS OR EQUIVALENT: CAVITIES TO ACCEPT 12015823 TERMINAL
  - (2,3)X(0,1) RAISED DELPHI CORPORATE BRAND TO BE LOCATED ON ANY EXTERIOR SURFACE, PREFERABLY VISIBLE AT FINAL ASSEMBLY. OPTIONAL CONSTRUCTION TO BE "PED" OR NO LOGO.
  - THIS CONNECTOR LIMITED TO ACCEPT MAX I.C.W. 4 MM AND I.C.H. 4.85 MM.
  - SECONDARY LOCK HINGE FLEX AREA MAY EXHIBIT MATERIAL SEPARATION AFTER CLOSING AT FINAL ASSEMBLY.

PART NO	REV	N/P	STATUS	MATERIAL SPECIFICATION AND COLOR	VOLUME CM <sup>3</sup>
12066440	04	AA	OBSOLETE	M2097008 PP IM BLU	2.159
12020397	04	-	-	M2097001 PP IM BLK	2.159

DIMENSIONAL RANGE (MM)		SHORT ET
FROM	TO	
> 0	> 30	> 100
> 30	> 70	> 150
> 70	> 100	> 200
> 100	> 150	> 250
> 150	> 200	> 300
> 200	> 250	> 300
> 250	> 300	> 400
TOLERANCE UNLESS OTHERWISE SPECIFIED:		
±0.15	±0.2	±0.3
±0.3	±0.4	±0.5
±0.6	±0.8	±1
±1	±1.2	±1.5
ANGULAR TOLERANCE 2°		

DWG TYPE: PART DRAWING

STYLE: SEE CHART

DISTR CODE: D

UNLESS OTHERWISE SPECIFIED:

THIS DOCUMENT IS IN ACCORDANCE WITH ASME Y14.9M-1994 AS MODIFIED BY THE IN CHARGE, DIMENSIONING AND TOLERANCE PRACTICES. ALL DIMENSIONS ARE TO UNLESS OTHERWISE SPECIFIED. ALL DIMENSIONS ARE IN MILLIMETERS.

THIRD ANGLE PROJECTION

DO NOT SCALE

USE MATH DATA

UNIGRAPHICS

**DELPHI**

DELPHI PACKARD ELECTRICAL/ELECTRONIC ARCHITECTURE  
NAPER, OH

DATE: 11/08/06

DR: J. REEVES

AP/VD: G. FERANCE

AP/VD: D. GARCAR

AP/VD: [blank]

AP/VD: [blank]

AP/VD: [blank]

SUBSTANCES OF CONCERN AND RECYCLED CONTENT PER DELPHI 10949001

MATERIAL SEE CHART

DRAWING NAME: TAXI CONN F M/P 280

DRAWING NUMBER: 12066441

SCALE: 5:1

FRM NO: 1 OF 1

SHEET NO: 1 OF 1

REV: R 05

N/P: -

Date: 06-Apr-07 Time: 08:35