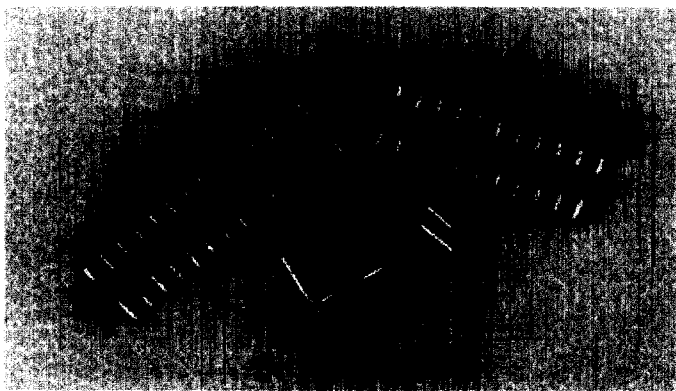


.100" (2.54 mm) Header



1100-3 Right Angle

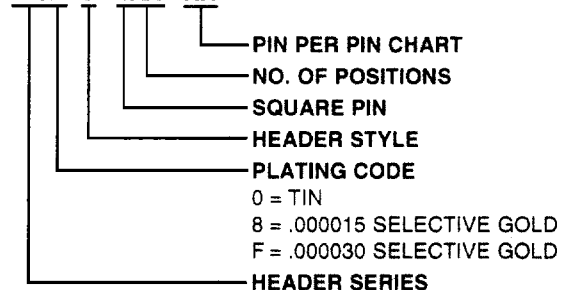
Low profile interconnection may be obtained using this right angle header .025" square pins preinserted into nylon wafers and formed increase packaging options. Mates with 1300 series crimp or IDC style connectors and 1000 series dip solder connectors.

Housing Material: Nylon 94V-0

Pins: Plated phosphor bronze

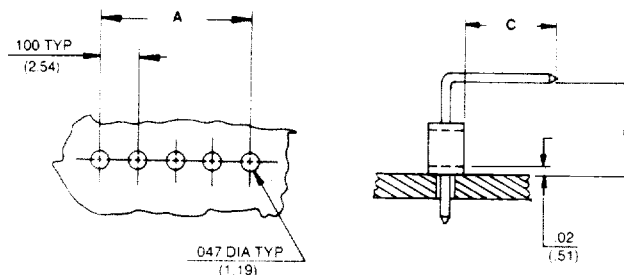
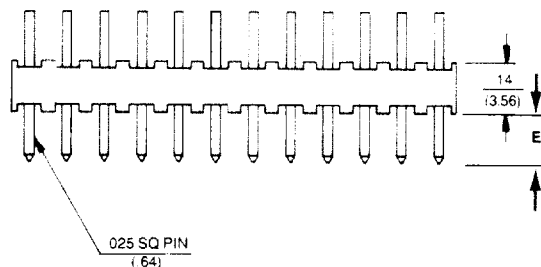
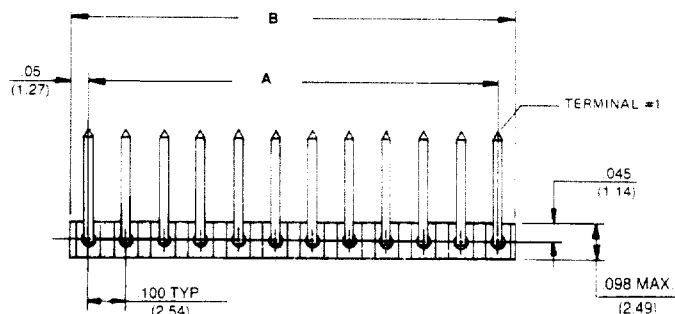
PART NUMBER CODING

110X-3-1XX-XX



ALL DIMENSIONS ARE IN INCHES
DIMENSIONS IN () ARE IN MILLIMETERS

Part Number	No. of Pos.	Dim. A.		Dim. B.	
		Inch	MM	Inch ± .010	MM ± .254
110X-3-102-XX	2	.100	2.54	.49	4.83
110X-3-103-XX	3	.200	5.08	.29	7.37
110X-3-104-XX	4	.300	7.62	.39	9.91
110X-3-105-XX	5	.400	10.16	.49	12.45
110X-3-106-XX	6	.500	12.70	.59	14.99
110X-3-107-XX	7	.600	15.24	.69	17.53
110X-3-108-XX	8	.700	17.78	.79	20.07
110X-3-109-XX	9	.800	20.32	.89	22.61
110X-3-110-XX	10	.900	22.86	.99	25.15
110X-3-111-XX	11	1.000	25.40	1.09	27.67
110X-3-112-XX	12	1.100	27.94	1.19	30.23
110X-3-113-XX	13	1.200	30.48	1.29	32.77
110X-3-114-XX	14	1.300	33.04	1.39	35.31
110X-3-115-XX	15	1.400	35.56	1.49	37.85
110X-3-116-XX	16	1.500	38.10	1.59	40.39
110X-3-117-XX	17	1.600	40.64	1.69	42.93
110X-3-118-XX	18	1.700	43.18	1.79	45.47
110X-3-119-XX	19	1.800	45.72	1.89	48.01
110X-3-120-XX	20	1.900	48.26	1.99	50.55
110X-3-121-XX	21	2.000	50.80	2.09	53.09
110X-3-122-XX	22	2.100	53.34	2.19	55.63
110X-3-123-XX	23	2.200	55.88	2.29	58.17
110X-3-124-XX	24	2.300	58.42	2.39	60.71
110X-3-125-XX	25	2.400	60.96	2.49	63.25
110X-3-126-XX	26	2.500	63.50	2.59	65.79
110X-3-127-XX	27	2.600	66.04	2.69	68.33
110X-3-128-XX	28	2.700	68.58	2.79	70.87



RECOMMENDED P.C. BOARD LAYOUT

Pin Chart

Pin Number	Dim. C.		Dim. D.		Dim. E.	
	Inch	MM	Inch	MM	Inch	MM
01	.29	7.37	.24	6.10	.14	3.56