

**Breakaway Headers—Unshrouded Double Row,  
.100 x .100 [2.54 x 2.54] Centerlines (Continued)**

**.025<sup>2</sup> [0.64<sup>2</sup>]  
Right-Angle Post**

**Material:**

**Housing**—Black thermoplastic, flame retardant

**Posts**—Copper alloy

**Related Product Data:**

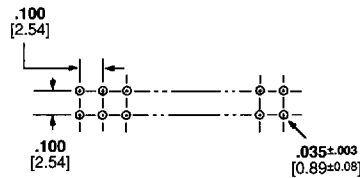
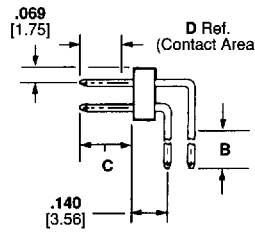
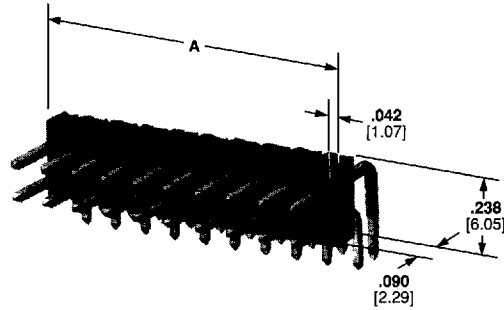
**Mateable Connectors**—  
pages 34, 35, 59, 60 & 62

**Plating Specifications:**

**Duplex C**—.000030 [0.00076] gold on contact area, .000100-.000200 [0.00254-0.00508] tin-lead on solder area, with entire post underplated .000050 [0.00127] nickel

**Duplex D**—.000015 [0.00038] gold on contact area, .000100-.000200 [0.00254-0.00508] tin-lead on solder area, with entire post underplated .000050 [0.00127] nickel

**Tin-Lead/Nickel**—  
.000100-.000200 [0.00254-0.00508] tin-lead over .000050 [0.00127] nickel on entire post



**Recommended Pc Board Hole Layout**

\*±.003 [±0.08] tolerances not to accumulate within one connector pattern.

.100 [2.54] Centerline Products  
Breakaway Headers, Unshrouded, Double Row, Right-Angle

## Breakaway Headers—Unshrouded Double Row, .100 x .100 [2.54 x 2.54] Centerlines (Continued)

### .025<sup>2</sup> [0.64<sup>2</sup>] Right-Angle Post (Continued)

No. of Pos.	A Dim.	Packaging Quantity	B = .090 [2.29] C = .230 [5.84] D = .185 [4.70]			B = .120 [3.05] C = .230 [5.84] D = .185 [4.70]			B = .110 [2.79] C = .318 [8.08] D = .200 [5.08]		
			Post Plating			Post Plating			Post Plating		
			Duplex C	Tin-Lead/Nickel		Duplex C	Duplex D	Tin-Lead/Nickel	Duplex C	Duplex D	Tin-Lead/Nickel
2	.084 2.13	250	103801-1	103795-1	103149-1	103326-1	103330-1	102979-1	102975-1	103324-1	
4	.184 4.67	250	103801-2	103795-2	103149-2	103326-2	103330-2	102979-2	102975-2	103324-2	
6	.284 7.21	250	103801-3	103795-3	103149-3	103326-3	103330-3	102979-3	102975-3	103324-3	
8	.384 9.75	250	103801-4	103795-4	103149-4	103326-4	103330-4	102979-4	102975-4	103324-4	
10	.484 12.29	250	103801-5	103795-5	103149-5	103326-5	103330-5	102979-5	102975-5	103324-5	
12	.584 14.83	100	103801-6	103795-6	103149-6	103326-6	103330-6	102979-6	102975-6	103324-6	
14	.684 17.37	100	103801-7	103795-7	103149-7	103326-7	103330-7	102979-7	102975-7	103324-7	
16	.784 19.91	100	103801-8	103795-8	103149-8	103326-8	103330-8	102979-8	102975-8	103324-8	
18	.884 22.45	100	103801-9	103795-9	103149-9	103326-9	103330-9	102979-9	102975-9	103324-9	
20	.984 24.99	100	1-103801-0	1-103795-0	1-103149-0	1-103326-0	1-103330-0	1-102979-0	1-102975-0	1-103324-0	
22	1.084 27.53	100	1-103801-1	1-103795-1	1-103149-1	1-103326-1	1-103330-1	1-102979-1	1-102975-1	1-103324-1	
24	1.184 30.07	100	1-103801-2	1-103795-2	1-103149-2	1-103326-2	1-103330-2	1-102979-2	1-102975-2	1-103324-2	
26	1.284 32.61	100	1-103801-3	1-103795-3	1-103149-3	1-103326-3	1-103330-3	1-102979-3	1-102975-3	1-103324-3	
28	1.384 35.15	100	—	—	1-103149-4	1-103326-4	1-103330-4	1-102979-4	1-102975-4	1-103324-4	
30	1.484 37.69	100	1-103801-5	1-103795-5	1-103149-5	1-103326-5	1-103330-5	1-102979-5	1-102975-5	1-103324-5	
32	1.584 40.23	100	—	—	1-103149-6	1-103326-6	1-103330-6	1-102979-6	1-102975-6	1-103324-6	
34	1.684 42.77	100	1-103801-7	1-103795-7	1-103149-7	1-103326-7	1-103330-7	1-102979-7	1-102975-7	1-103324-7	
36	1.784 45.31	100	—	—	1-103149-8	1-103326-8	1-103330-8	1-102979-8	1-102975-8	1-103324-8	
38	1.884 47.85	100	—	—	1-103149-9	1-103326-9	1-103330-9	1-102979-9	1-102975-9	1-103324-9	
40	1.984 50.39	100	2-103801-0	2-103795-0	2-103149-0	2-103326-0	2-103330-0	2-102979-0	2-102975-0	2-103324-0	
42	2.084 52.93	100	—	—	2-103149-1	2-103326-1	2-103330-1	2-102979-1	2-102975-1	2-103324-1	
44	2.184 55.47	100	—	—	2-103149-2	2-103326-2	2-103330-2	2-102979-2	2-102975-2	2-103324-2	
46	2.284 58.01	100	—	—	2-103149-3	2-103326-3	2-103330-3	2-102979-3	2-102975-3	2-103324-3	
48	2.384 60.55	100	—	—	2-103149-4	2-103326-4	2-103330-4	2-102979-4	2-102975-4	2-103324-4	
50	2.484 63.09	100	2-103801-5	2-103795-5	2-103149-5	2-103326-5	2-103330-5	2-102979-5	2-102975-5	2-103324-5	
52	2.584 65.63	100	—	—	2-103149-6	2-103326-6	2-103330-6	2-102979-6	2-102975-6	2-103324-6	
54	2.684 68.17	100	—	—	2-103149-7	2-103326-7	2-103330-7	2-102979-7	2-102975-7	2-103324-7	
56	2.784 70.71	100	—	—	2-103149-8	2-103326-8	2-103330-8	2-102979-8	2-102975-8	2-103324-8	
58	2.884 73.27	100	—	—	2-103149-9	2-103326-9	2-103330-9	2-102979-9	2-102975-9	2-103324-9	
60	2.984 75.79	50	3-103801-0	3-103795-0	3-103149-0	3-103326-0	3-103330-0	3-102979-0	3-102975-0	3-103324-0	
62	3.084 78.33	50	—	—	3-103149-1	3-103326-1	3-103330-1	3-102979-1	3-102975-1	3-103324-1	
64	3.184 80.87	50	—	—	3-103149-2	3-103326-2	3-103330-2	3-102979-2	3-102975-2	3-103324-2	
66	3.284 83.41	50	—	—	3-103149-3	3-103326-3	3-103330-3	3-102979-3	3-102975-3	3-103324-3	
68	3.384 85.95	50	—	—	3-103149-4	3-103326-4	3-103330-4	3-102979-4	3-102975-4	3-103324-4	
70	3.484 88.49	50	3-103801-5	3-103795-5	3-103149-5	3-103326-5	3-103330-5	3-102979-5	3-102975-5	3-103324-5	
72	3.584 91.03	50	—	—	3-103149-6	3-103326-6	3-103330-6	3-102979-6	3-102975-6	3-103324-6	
74	3.684 93.57	50	—	—	3-103149-7	3-103326-7	3-103330-7	3-102979-7	3-102975-7	3-103324-7	
76	3.784 96.11	50	—	—	3-103149-8	3-103326-8	3-103330-8	3-102979-8	3-102975-8	3-103324-8	
78	3.884 98.65	50	—	—	3-103149-9	3-103326-9	3-103330-9	3-102979-9	3-102975-9	3-103324-9	
80	3.984 101.19	50	4-103801-0	4-103795-0	4-103149-0	4-103326-0	4-103330-0	4-102979-0	4-102975-0	4-103324-0	

Notes: 1. Headers may be broken to desired number of positions using Hand Tool No. 91406-1.  
2. Other post lengths are available, consult AMP Incorporated.



Hand Tool No. 91406-1

.100 [2.54] Centerline Products  
Breakaway Headers, Unshrouded, Double Row, Right-Angle

## Breakaway, Retention and Standard Headers—Unshrouded

### Product Facts

- Design and inventory versatility—headers can be broken into any size needed
- Variety of popular sizes available
- Substantial time/labor savings—install all posts at one time
- Vertical and right-angle versions available in single- and double-row configurations
- Copper alloy, posts
- Choice of gold duplex or tin-lead plated posts
- Post lengths include .230 [5.84] and .318 [8.08] for connector mating
- Can be select loaded, consult AMP Incorporated

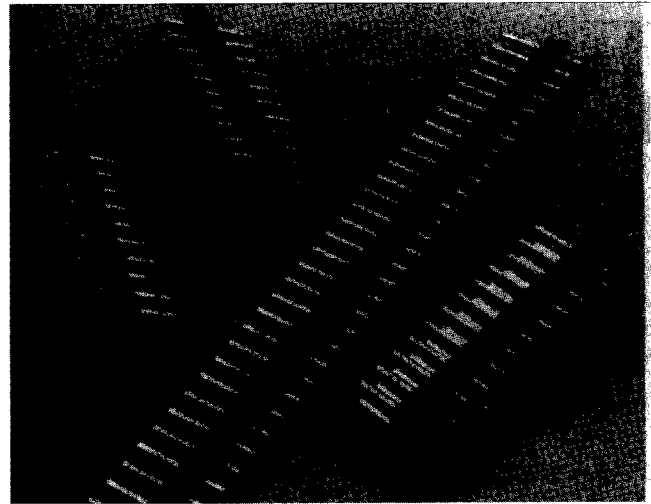
### Product Facts

- Variety of popular sizes available
- Substantial time/labor savings—install all posts at one time
- Vertical and right-angle versions available in single- and double-row configurations
- Triple-row version available in vertical configurations
- Copper alloy, drawn wire posts
- Choice of select gold or tin-lead plated posts
- Post length is .318 [8.08] for connector mating

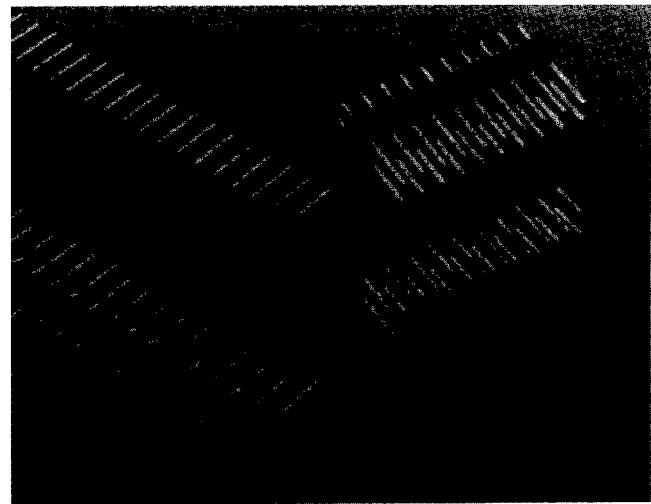
- Board retention feature available
- Flame retardant, black thermoplastic housings; 94V-0 rated
- Recognized under the Component Program of Underwriters Laboratories Inc., File No. E28476 
- Certified by Canadian Standards Association, File No. LR 16455 

- Flame retardant, black thermoplastic housings; 94V-0 rated
- Recognized under the Component Program of Underwriters Laboratories Inc., File No. E28476 
- Certified by Canadian Standards Association, File No. LR 7189 

### Breakaway and Retention Headers—Unshrouded



### Standard Headers—Unshrouded



### Performance Characteristics:

#### Electrical

**Insulation Resistance**—5,000 megohms minimum initial

**Dielectric Withstanding Voltage**—750 RMS at sea level

#### Environmental

**Operating Temperature**— -65° C to +105° C (black thermoplastic housings)

.100 [2.54] Centerline Products  
Breakaway, Retention and Standard Headers—Unshrouded (Introduction)