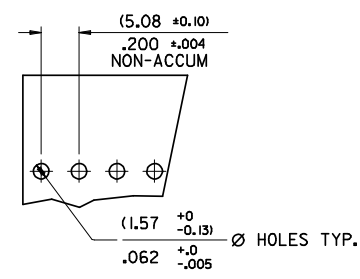
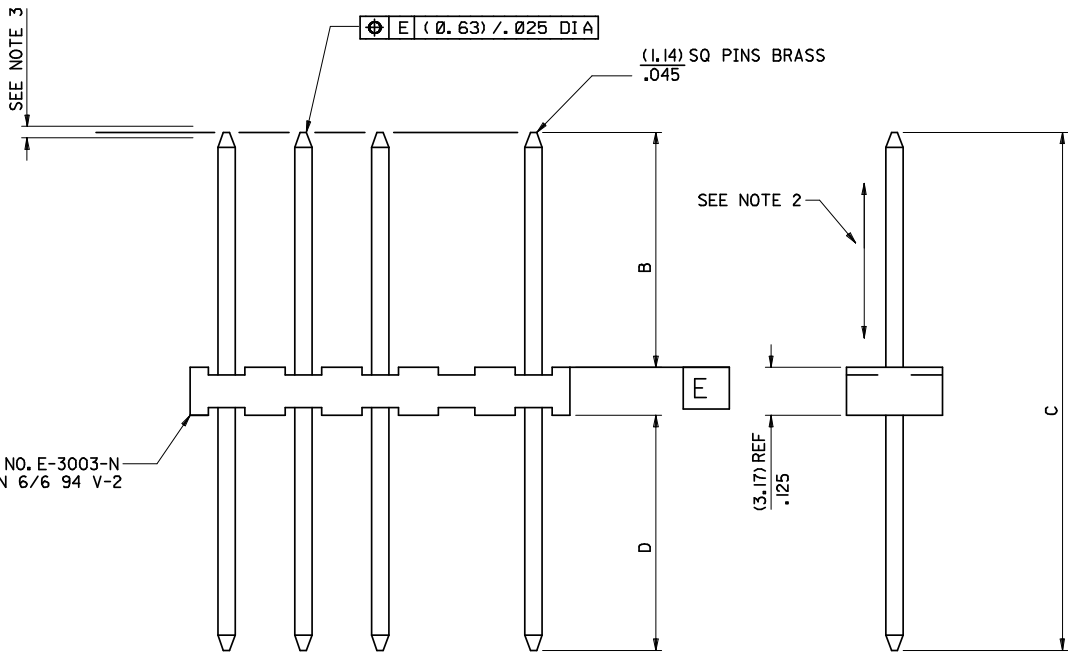


- NOTES:
1. DIMENSIONS SHOWN ARE (MM)/IN.
 2. PIN PUSH OUT FORCE 3lbs MIN
 3. RELATIVE HEIGHT OF PINS MUST NOT VARY MORE THAN .005 T.I.R
 4. PIN SOLDERABILITY PER MOLEX ENG STD NO. 152
 5. CODE LETTER PRECEDING PART NO. DESIGNATES MANUFACTURE LOCATION, i.e. I = IRELAND
 6. RECOMMENDED PCB THICKNESS 1.6MM
 7. PRODUCT SPECIFICATION: PS-99020-0087



RECOMMENDED P.C. BOARD HOLE DIMENSIONS



WAFER NO. E-3003-N
MAT'L NYLON 6/6 94 V-2

3008-N *-*
 BASE NO. _____
 NO. OF CCTS _____
 VOID LOCATION
 1 - CCT NO. 1
 2 - CCT NO. 2
 5I- MULTIPLE VOIDS
 VERSION
 A - FIRST VERSION
 B - SECOND VERSION
 VERSION FOLLOWED BY G - GOLD

DOC TYPE CHANGE EC NO: E2008-0684 DRAWN: BRUTTLE 2008/06/24 CHKD: 2008/07/03 APPR: BMAGUIRE 2008/07/03	QUALITY SYMBOLS ▽=0 ▽=0	GENERAL TOLERANCES (UNLESS SPECIFIED)		DIMENSION STYLE IN/MM		SCALE 4:1	DESIGN UNITS METRIC	THIRD ANGLE PROJECTION			
		4 PLACES ± --- ± --- 3 PLACES ± --- ± .010 2 PLACES ± 0.25 ± .016 1 PLACE ± 0.41 ± ---	mm INCH ± --- ± --- ± .010 ± .010 ± 0.25 ± .016 ± 0.41 ± ---	DRAWN BY DWASZKIEWICZ 2006/01/04	DATE 2006/01/04	TITLE WAFER FLAT, KK (5.08)/.2 CENTRES FOR (1.14)/.045 SQ PINS		MOLEX INCORPORATED			
		ANGULAR ±1/2°		CHECKED BY D MORIARTY 2006/01/12	DATE 2006/01/12	MATERIAL NO. SEE CHART		DOCUMENT NO. SDAE-3008-N*- *	SHEET NO. 1 OF 4		
		DRAFT WHERE APPLICABLE MUST REMAIN WITHIN DIMENSIONS		APPROVED BY J DENNEHY 2006/01/12		THIS DRAWING CONTAINS INFORMATION THAT IS PROPRIETARY TO MOLEX INCORPORATED AND SHOULD NOT BE USED WITHOUT WRITTEN PERMISSION					

PIN PLATING : ELECTRO TIN PLATE .000300/.000200 OVER .000130/.000100 COPPER					PIN PLATING :			PIN PLATING : ELECTRO TIN PLATE .000300/.000200 OVER .000300/.000200 COPPER					PIN PLATING : GOLD PLATE .000030/.000020 OVER .000040/.000030 NICKEL			PIN PLATING : GOLD PLATE .000030/.000020 OVER .000040/.000030 NICKEL			PIN PLATING : GOLD PLATE .000030/.000020 OVER .000040/.000030 NICKEL		
ASSY No.	AE-3008-NH**	ASSY No.	AE-3008-N	ASSY No.	AE-3008-NAD**	ASSY No.	AE-3008-NAG	ASSY No.	AE-3008-NPG	ASSY No.	AE-3008-NRG	ASSY No.	AE-3008-NRG								
PIN No.	2161-36	PIN No.		PIN No.	2161-1	PIN No.	2161-IG	PIN No.	2161-19G	PIN No.	2161-4IG	PIN No.	2161-4IG								
PIN LENGTH C	(30.5)/.120	PIN LENGTH C		PIN LENGTH C	(19.0)/.75	PIN LENGTH C	(19.0)/.75	PIN LENGTH C	(26.2)/.1032	PIN LENGTH C	(32.26)/.1270	PIN LENGTH C	(32.26)/.1270								
PRESS DIM. B	(10.2)/.40	PRESS DIM. B		PRESS DIM. B	(11.30)/.445 REF	PRESS DIM. B	(11.30)/.445 REF	PRESS DIM. B	(18.47)/.727 REF	PRESS DIM. B	(24.51)/.965 REF	PRESS DIM. B	(24.51)/.965 REF								
DIM. D	(17.3)/.68	DIM. D		DIM. D	(4.57±.102)/.18±.040	DIM. D	(4.57±.102)/.18±.040	DIM. D	(4.57±.102)/.18±.040	DIM. D	(4.57±.102)/.18±.040	DIM. D	(4.57±.102)/.18±.040								

No. CCT	DIM. A	ENG. No.	PART No.	VOID LOC.	ENG. No.	PART No.	VOID LOC.	ENG. No.	PART No.	VOID LOC.	ENG. No.	PART No.	VOID LOC.	ENG. No.	PART No.	VOID LOC.	ENG. No.	PART No.	VOID LOC.
2	(9.91±0.15) (14.99±0.15) (5.90±0.06)	AE-3008-2H	NOT TOOLED	NONE	AE-3008-2	NOT TOOLED	NONE	AE-3008-2AD	10-74-1021	NONE	AE-3008-2AG	10-51-1021	NONE	AE-3008-2PG	NOT TOOLED	NONE	AE-3008-2RG	NOT TOOLED	NONE
3	(20.06±0.18) (7.90±0.07)	-3H			-3			-3AD	-1031		-3AG	-1031		-3PG			-3RG		
4	(25.15±0.20) (9.90±0.08)	-4H			-4			-4AD	-1041		-4AG	-1041		-4PG			-4RG		
5	(30.23±0.23) (11.90±0.09)	-5H			-5			-5AD	-1051		-5AG	-1051		-5PG			-5RG		
6	(35.31±0.25) (13.90±0.10)	-6H			-6			-6AD	-1061		-6AG	-1061		-6PG			-6RG		
7	(40.39±0.30) (15.90±0.12)	-7H			-7			-7AD	-1071		-7AG	-1071		-7PG			-7RG		
8	(45.47±0.30) (17.90±0.12)	-8H			-8			-8AD	-1081		-8AG	-1081		-8PG			-8RG		
9	(50.55±0.30) (19.90±0.12)	-9H			-9			-9AD	-1091		-9AG	-1091		-9PG			-9RG		
10	(55.63±0.33) (2.19±0.13)	-10H			-10			-10AD	-1101		-10AG	-1101		-10PG			-10RG		
11	(60.71±0.36) (2.39±0.14)	-11H			-11			-11AD	-1111		-11AG	-1111		-11PG			-11RG		
12	(65.79±0.36) (2.59±0.14)	-12H			-12			-12AD	-1121		-12AG	-1121		-12PG			-12RG		
13	(70.87±0.36) (2.79±0.14)	-13H			-13			-13AD	-1131		-13AG	-1131		-13PG			-13RG		
14	(75.95±0.38) (2.99±0.15)	-14H			-14			-14AD	-1141		-14AG	-1141		-14PG			-14RG		
15	(81.03±0.41) (3.19±0.16)	-15H			-15			-15AD	-1151		-15AG	-1151		-15PG			-15RG		
16	(86.11±0.43) (3.39±0.17)	-16H			-16			-16AD	-1161		-16AG	-1161		-16PG			-16RG		
17	(91.19±0.46) (3.59±0.18)	-17H			-17			-17AD	-1171		-17AG	-1171		-17PG			-17RG		
18	(96.27±0.48) (3.79±0.19)	-18H			-18			-18AD	-1181		-18AG	-1181		-18PG			-18RG		
19	(101.35±0.51) (3.99±0.20)	-19H			-19			-19AD	-1191		-19AG	-1191		-19PG			-19RG		
20		AE-3008-20H	NOT TOOLED	NONE	AE-3008-20	NOT TOOLED	NONE	AE-3008-20AD	10-74-1201	NONE	AE-3008-20AG	10-51-1201	NONE	AE-3008-20PG	NOT TOOLED	NONE	AE-3008-20RG	NOT TOOLED	NONE
		FOR PARTS WITH VOIDS SEE BELOW			FOR PARTS WITH VOIDS SEE BELOW			FOR PARTS WITH VOIDS SEE BELOW			FOR PARTS WITH VOIDS SEE BELOW			FOR PARTS WITH VOIDS SEE BELOW			FOR PARTS WITH VOIDS SEE BELOW		
		AE-3008-6H-2	10-10-1067	2				AE-3008-3AD-2	10-74-1032	2									

FOR DIM A
SEE ABOVE

PART NO. SEE CHART
DWG NO. SDAE-3008-N**

EC NO. SEE SHEET 1 DRWN: AOD CHY: / / / APPR: / / / Z	DESCRIPTION MAJOR CRITICAL C=	QUALITY SYMBOLS	GENERAL TOLERANCES: (UNLESS SPECIFIED)		SCALE : <input type="checkbox"/> mm <input checked="" type="checkbox"/> INCH	DESIGN UNITS <input type="checkbox"/> mm <input checked="" type="checkbox"/> INCH	THIRD ANGLE PROJECTION	DIMENSIONS: <input checked="" type="checkbox"/> mm <input type="checkbox"/> INCH <input type="checkbox"/> mm <input type="checkbox"/> INCH		SHT REV REVISE ON CAD ONLY
			4 PLACES ±0.	INCH ±.				DRAWN BY & DATE AODONOVA 98/09/11		
			3 PLACES ±0.	INCH ±.	CHECKED BY & DATE MGOONEY 3 / 1 / 99		APPROVED BY & DATE MWILHITE 23/2 / 99		MOLEX INCORPORATED	
			2 PLACES ±0.	INCH ±.	CAD FILENAME S3008N3.DGN		MATERIAL NO.		DRAWING NO. SDAE-3008 -N*- *	
			1 PLACE ±0.	INCH ±.	THIS DRAWING CONTAINS INFORMATION THAT IS PROPRIETARY TO MOLEX INCORPORATED AND SHOULD NOT BE USED WITHOUT WRITTEN PERMISSION.		SHEET NO. 3 OF		SIZE C	