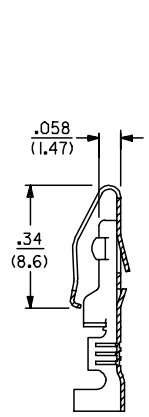
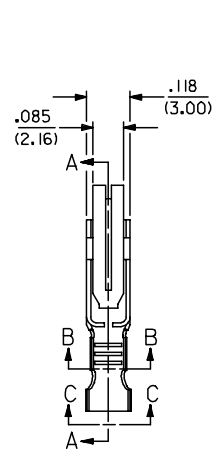


NOTES

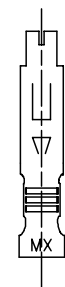
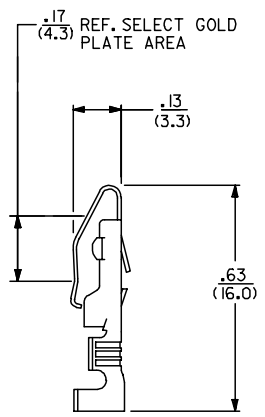
- 1) MATERIAL: BRASS, ALLOY 260, .010/(0.25) THICK.
- 2) FINISH:
 - P555: .000015/(0.00038) MIN. SELECT GOLD OVER .000030/(0.00076) MIN. NICKEL OVERALL.
 - P913: .000100/(0.00254) - .000250/(0.00635) HOT TIN-LEAD DIP.
 - P607: .000050/(0.00127) MIN. SELECT GOLD OVER .000050/(0.00127) MIN. NICKEL OVERALL.
 - P228: .000030/(0.00076) MIN. SELECT GOLD ON CONTACT AREA, .000100/(0.00254) MIN. SELECT MATTE TIN, BOTH OVER .000050/(0.00127) MIN. NICKEL OVERALL.
- 3) PRODUCT SPECIFICATION PS-09-50 APPLIES.
- 4) TERMINAL FOR USE WITH 18-24 AWG WIRE.
- 5) THIS PART CONFORMS TO CLASS B REQUIREMENTS OF COSMETIC SPEC. PS-45499-002 .



SECTION A-A

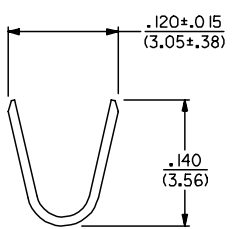


SECTION B-B

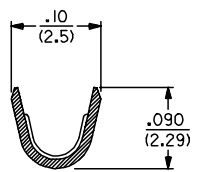


LEGEND

- 4366-**
- PLATING (SEE NOTE 2)
 - FORM
 - BLANK=CHAIN
 - L=LOOSE



VIEW C-C



2	C1
1	C1
SHT. REV.	

ADD P228 FINISH EC NO: UICP2007-3134 DRAWN/KIPPER 2007/06/13 CHKD:ADERR 2007/06/18 APPR:FSM TH 2007/06/19	QUALITY SYMBOLS ▽=0 ▽=0	GENERAL TOLERANCES (UNLESS SPECIFIED)		DIMENSION STYLE IN/MM	SCALE 4:1	DESIGN UNITS INCH	THIRD ANGLE PROJECTION		
		4 PLACES ± --- ± ---	3 PLACES ± --- ± .010	DRAWN BY ROBERTS	DATE 1991/08/15	TITLE TERMINAL CRIMP ON			
		2 PLACES ± 0.25 ± .014	1 PLACE ± 0.35 ± ---	CHECKED BY PATEL	DATE 1991/08/15	APPROVED BY LENZ			
		ANGULAR ±1/2°		MATERIAL NO. SEE CHART		DOCUMENT NO. SD-4366		SHEET NO. 1 OF 2	
DRAFT WHERE APPLICABLE MUST REMAIN WITHIN DIMENSIONS		THIS DRAWING CONTAINS INFORMATION THAT IS PROPRIETARY TO MOLEX INCORPORATED AND SHOULD NOT BE USED WITHOUT WRITTEN PERMISSION							

	13	12	11	10	9	8	7	6	5	4	3	2	1
J	PART NO.	ENG. NO	REF.	PART NO.	ENG. NO		PART NO.	ENG. NO		PART NO.	ENG. NO		J
	08-03-0304	4366-P913L											
	08-03-0303	4366-P913											
	08-05-0302	4366-P555L	ES-150-*										
	08-05-0301	4366-P555	ES-150-*										
I	08-05-0305	4366-P607	ES-150-*										I
	50-36-1873	4366-P228	ES-150-*										
H													H
G													G
F													F
E													E
D													D
C													C

COLUMN NO. 1	CON'T. IN COLUMN NO.	SHEET NO.	COLUMN NO. 2	CON'T. IN COLUMN NO.	SHEET NO.	COLUMN NO. 3	CON'T. IN COLUMN NO.	SHEET NO.	COLUMN NO. 4	CON'T. IN COLUMN NO.	SHEET NO.																
ADD P/N 50-36-1873 EC NO. UCP2007-3134 2007/06/13 DRAWN/KIPPER 2007/06/18 CHKD:ADERR 2007/06/19 APPR:FSM TH 2007/06/19			QUALITY SYMBOLS 		GENERAL TOLERANCES (UNLESS SPECIFIED) <table border="1"> <tr> <td></td> <td>mm</td> <td>INCH</td> </tr> <tr> <td>4 PLACES</td> <td>± .005</td> <td>± .0005</td> </tr> <tr> <td>3 PLACES</td> <td>± .005</td> <td>± .0005</td> </tr> <tr> <td>2 PLACES</td> <td>± .005</td> <td>± .0005</td> </tr> <tr> <td>1 PLACE</td> <td>± .005</td> <td>± .0005</td> </tr> </table>			mm	INCH	4 PLACES	± .005	± .0005	3 PLACES	± .005	± .0005	2 PLACES	± .005	± .0005	1 PLACE	± .005	± .0005	DIMENSION STYLE IN/MM DRAWN BY DATE ROBERTS 1991/08/28 CHECKED BY DATE PATEL 1991/08/28 APPROVED BY DATE LENZ 1991/08/28		SCALE --- DESIGN UNITS INCH THIRD ANGLE PROJECTION		TITLE TERMINAL CRIMP ON	
	mm	INCH																									
4 PLACES	± .005	± .0005																									
3 PLACES	± .005	± .0005																									
2 PLACES	± .005	± .0005																									
1 PLACE	± .005	± .0005																									
DRAFT WHERE APPLICABLE MUST REMAIN WITHIN DIMENSIONS						MATERIAL NO. SEE CHART		MOLEX INCORPORATED SD-4366		SHEET NO. 2 OF 2																	
THIS DRAWING CONTAINS INFORMATION THAT IS PROPRIETARY TO MOLEX INCORPORATED AND SHOULD NOT BE USED WITHOUT WRITTEN PERMISSION																											