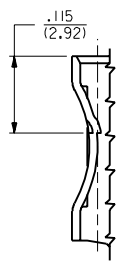
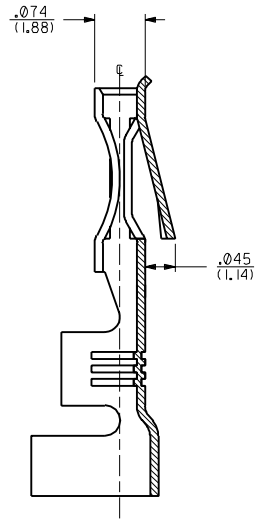
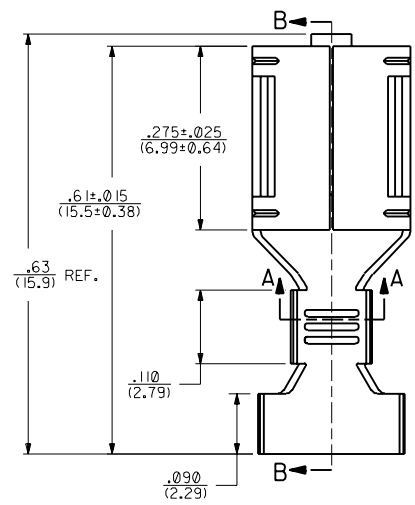
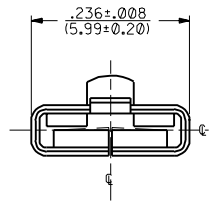
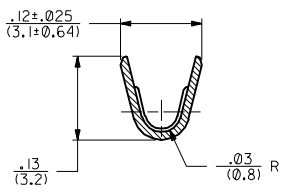
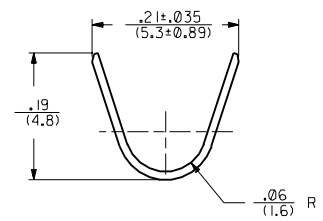


PART NO.	ENG. NO.	DESCRIPTION
05-06-0301	2176-T	TIN PLATE
05-06-0303	2176-AT	WITHOUT DETENT, TIN PLATED
NOT TOOLED	X-2176-999A	WITHOUT DETENT, UNPLATED
05-06-0302	2176-(P90)IL	WITH DETENT, PLATED, LOOSE
05-06-0304	2176-(P90)IAL	WITHOUT DETENT, PLATED, LOOSE



**DETENT LOCATION**  
SCALE 8:1

- NOTES:
1. CRIMP FOR #14 THRU #22 GA. WIRE, ALSO (2) #18 GA. WIRE WITH .03(0.79) THK. INSULATION.
  2. MATERIAL: .010/(0.25) THK. 70/30 BRASS ALLOY, PRE-TIN PLATED.
  3. PRODUCT SPECIFICATION 05-06-1 APPLIES.



**SECTION A-A**  
SCALE 8:1

E	REVISIONS
1	REDRAWN ON CAD PER UCR2000-0804 00/07/13 ES

DIMENSIONS SHOWN METRIC (INCH)		UNLESS OTHERWISE SPECIFIED TOLERANCES ANGULAR ± 1/2°		MFG. SH. REV. LTR. REVISIONS		REVISE ONLY ON CAD SYSTEM	
3 PLACE ± .010	---	INCH	METRIC	TITLE			
2 PLACE ± .014	± 0.25	---	---	TERMINAL FOR .020/(0.51) X .187/(4.75) SPADE			
1 PLACE ---	± 0.35	---	---	PART NO. MOLEX INCORPORATED SHEET NO. DATE			
DRAFT WHERE APPLICABLE MUST REMAIN WITHIN DIMENSIONS				L15LEJLL. 60532 U.S.A. 1 OF 1 92/10/26			
DRWG. BY MAB	CHKD. BY KBP	SCALE 8:1		SEE CHART		DRWG. NO. SD-2176-*	
APP'D. BY RAS	FILE NAME SD2176X1.DWG			THIS DRAWING CONTAINS INFORMATION THAT IS PROPRIETARY TO MOLEX INC. AND SHOULD NOT BE USED WITHOUT WRITTEN PERMISSION.		DIV. SIZE CP C	