

EDP NO.	ENG NO.
08-01-0101	I797-AA(P909)
08-01-0102	I797-AA(P909)L
08-06-0101	I797-AA(550)
08-06-0102	I797-AA(550)L
08-05-0103	I797-AA(555)
08-05-0104	I797-AA(555)L
08-03-0101	I797-BA(P909)
08-03-0102	I797-BA(P909)L
08-07-0101	I797-BA(550)
08-07-0102	I797-BA(550)L
- -	I797-BA(555)
- -	I797-BA(555)L

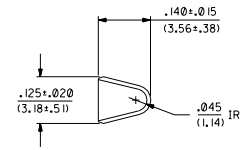
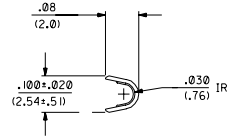
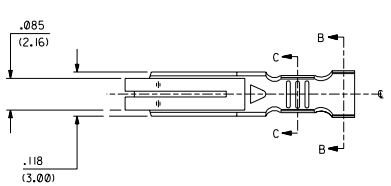
NOTES:
 1. DIMENSIONS GIVEN ACROSS CENTERLINES ARE SYMMETRICAL ABOUT THOSE CENTERLINES WITHIN HALF THE TOTAL TOLERANCE

MATERIAL:
 A= .011 THK BRASS
 B= .011 THK PHOS BRONZE

WIRE SIZE
 A=18 TO 24 AWG WIRE (SEE SHEET 1)
 INS DIA. .060/.120
 B=24 TO 30 AWG WIRE (SEE SHEET 2)
 INS DIA. .040/.090
 C=16 AWG WIRE (SEE SHEET 2)
 INS DIA. .098 MAX

I797- *****
 PLATING SDES-88
 BLANK=CHAIN
 L=LOOSE
 *(P909) OVERALL HOT TIN DIP: .00254 MICROMETERS MIN.
 (550) SELECT GOLD: .00038 MICROMETERS MIN.
 OVERALL GOLD FLASH: .00005 MICROMETERS MIN.
 OVERALL NICKEL UNDERPLATE: .00076 MICROMETERS MIN.
 (555) SELECT GOLD: .00038 MICROMETERS MIN.
 OVERALL NICKEL UNDERPLATE: .00076 MICROMETERS MIN.

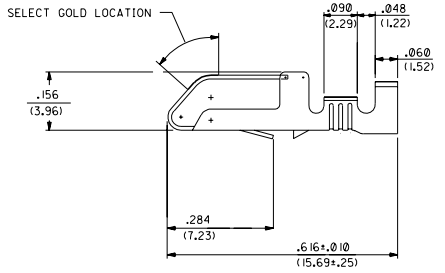
*THE PRIMARY SHIPPING CARTON WILL BE LABELED 'COMPLIANT TO ROHS DIRECTIVE 2002/95/EC AND ELV ANNEX II OF DIRECTIVE 2000/53/EC.' CARTONS WITHOUT THIS LABEL MAY CONTAIN PRODUCT WITH TIN-LEAD PLATING.



SECTION C-C

SECTION B-B

18/24 AWG CRIMP



REV.	DATE	BY	CHKD.	REVISIONS
1	08/13/92	WJ	Y	ADD/REL. 999 ECR US8256 9-21-94 SAMIEC
2		Y	W	ADD TO CAD ECR U21847 9-8-92 SAMIEC

DIMENSIONS SHOWN ARE IN INCH UNLESS OTHERWISE SPECIFIED
 UNLESS OTHERWISE SPECIFIED DIMENSIONS ARE IN MILLIMETERS

SCALE: 1:1

MOLE INCORPORATED
 1000 S. GARDEN AVENUE
 CHICAGO, IL 60606

SEE CHART SD-1797

DATE: 08/13/92

FILE: S1797X1

NO. OF SHEETS: 2

NO. OF SHEETS COMPLETED: 1

NO. OF SHEETS TO BE COMPLETED: 1

NO. OF SHEETS TO BE PRODUCED: 1

NO. OF SHEETS TO BE REVIEWED: 1

NO. OF SHEETS TO BE APPROVED: 1

NO. OF SHEETS TO BE CHECKED: 1

NO. OF SHEETS TO BE DRAWN: 1

NO. OF SHEETS TO BE ENGRAVED: 1

NO. OF SHEETS TO BE FILLED: 1

NO. OF SHEETS TO BE FINISHED: 1

NO. OF SHEETS TO BE FOLDED: 1

NO. OF SHEETS TO BE FORMED: 1

NO. OF SHEETS TO BE GROUND: 1

NO. OF SHEETS TO BE HOLE PUNCHED: 1

NO. OF SHEETS TO BE LAMINATED: 1

NO. OF SHEETS TO BE MACHINED: 1

NO. OF SHEETS TO BE MOUNTED: 1

NO. OF SHEETS TO BE PAINTED: 1

NO. OF SHEETS TO BE PLATED: 1

NO. OF SHEETS TO BE POLISHED: 1

NO. OF SHEETS TO BE RIVETED: 1

NO. OF SHEETS TO BE SOLDERED: 1

NO. OF SHEETS TO BE STAMPED: 1

NO. OF SHEETS TO BE TESTED: 1

NO. OF SHEETS TO BE TYPED: 1

NO. OF SHEETS TO BE WELDED: 1

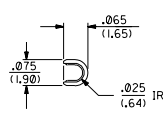
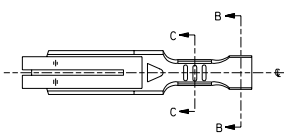
NO. OF SHEETS TO BE WOUND: 1

NO. OF SHEETS TO BE YARNED: 1

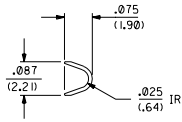
20 19 18 17 16 15 14 13 12 11 10 9 8 7 6 5 4 3 2 1

1797

1797



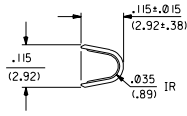
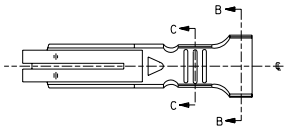
SECTION C-C



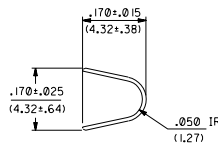
SECTION B-B

24-30 AWG CRIMP

EDP NO.	ENG NO.
08-01-0105	1797-AB(P909)
08-01-0106	1797-AB(P909)L
08-06-0105	1797-AB(550)
08-06-0106	1797-AB(550)L
08-05-0105	1797-AB(555)
- -	1797-AB(555)L
08-03-0103	1797-BB(P909)
08-03-0104	1797-BB(P909)L
- -	1797-BB(550)
- -	1797-BB(550)L
- -	1797-BB(555)
- -	1797-BB(555)L



SECTION C-C



SECTION B-B

16 AWG CRIMP

EDP NO.	ENG NO.
08-01-0116	1797-AC(P909)
- -	1797-AC(P909)L
- -	1797-AC(550)
- -	1797-AC(550)L
- -	1797-AC(555)
- -	1797-AC(555)L
- -	1797-BC(P909)
- -	1797-BC(P909)L
- -	1797-BC(550)
- -	1797-BC(550)L
- -	1797-BC(555)
- -	1797-BC(555)L

SEE SHEET I	SEE SHEET I	DIMENSIONS SHOWN METRIC/INCH UNLESS OTHERWISE SPECIFIED TOLERANCES ARE IN INCH	REVISIONS: 2 DATE: 08/13/92 TITLE: CRIMP TERMINAL BIFURCATED
SEE SHEET I	SEE SHEET I		
SEE SHEET I	SEE SHEET I	1 PLATE ± .010 1 PLATE ± .020 ± 0.25 1 PLATE --- ± 0.51	MOLEX INCORPORATED 68032 SHEET NO. 2 DATE 08/13/92
SEE SHEET I	SEE SHEET I	ONLY DIMENSIONS APPLICABLE MUST REMAIN WITHIN DIMENSIONS	
SEE SHEET I	SEE SHEET I	DESIGNED BY: SAMIEC CHECKED BY: ROBERTS DATE: 5/19/91 SCALE:	FILE NAME: SD-1797 THIS DRAWING CONTAINS INFORMATION THAT IS PROPRIETARY TO MOLEX INC. AND SHALL NOT BE USED WITHOUT MOLEX PERMISSION.
LTR. REVISIONS	LTR. REVISIONS		SHEET NO. 2 DATE 08/13/92 TITLE: CRIMP TERMINAL BIFURCATED

20 19 18 17 16 15 14 13 12 11 10 9 8 7 6 5 4 3 2 1