

MULTIGIG RT

TE Internal #: 1-1469491-2

Backplane Guide Hardware, Guide Pin

[View on TE.com >](#)



Connectors > PCB Connectors > Backplane Connectors > Backplane Guide Hardware



Backplane Guide Hardware Type: **Guide Pin**

Features

Product Type Features

Backplane Guide Hardware Type	Guide Pin
-------------------------------	-----------

Configuration Features

PCB Mount Orientation	Vertical
-----------------------	----------

Body Features

Guide Component Plating Material	Silver
Guide Pin Type	External Thread
Guide Component Base Material	Zinc Alloy

Mechanical Attachment

Guide Hardware	With
----------------	------

Dimensions

Product Length	24 mm
----------------	-------

Operation/Application

Compatible With Backplane Product Type	9mm Guide Module
--	------------------

Industry Standards

VITA Standard	VITA 46
---------------	---------

Packaging Features

Packaging Quantity	1
--------------------	---



Packaging Method

Package

Other

Comment

Keyed.

Product Compliance

[For compliance documentation, visit the product page on TE.com>](#)

EU RoHS Directive 2011/65/EU

Compliant

EU ELV Directive 2000/53/EC

Compliant

China RoHS 2 Directive MIIT Order No 32, 2016

No Restricted Materials Above Threshold

EU REACH Regulation (EC) No. 1907/2006

Current ECHA Candidate List: JAN 2022 (223)
Candidate List Declared Against: JAN 2022 (223)
Does not contain REACH SVHC

Halogen Content

Low Halogen - Br, Cl, F, I < 900 ppm per homogenous material. Also BFR/CFR/PVC Free

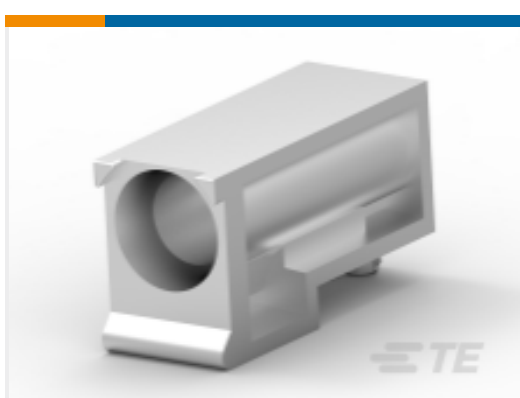
Solder Process Capability

Not applicable for solder process capability

Product Compliance Disclaimer

This information is provided based on reasonable inquiry of our suppliers and represents our current actual knowledge based on the information they provided. This information is subject to change. The part numbers that TE has identified as EU RoHS compliant have a maximum concentration of 0.1% by weight in homogenous materials for lead, hexavalent chromium, mercury, PBB, PBDE, DBP, BBP, DEHP, DIBP, and 0.01% for cadmium, or qualify for an exemption to these limits as defined in the Annexes of Directive 2011/65/EU (RoHS2). Finished electrical and electronic equipment products will be CE marked as required by Directive 2011/65/EU. Components may not be CE marked. Additionally, the part numbers that TE has identified as EU ELV compliant have a maximum concentration of 0.1% by weight in homogenous materials for lead, hexavalent chromium, and mercury, and 0.01% for cadmium, or qualify for an exemption to these limits as defined in the Annexes of Directive 2000/53/EC (ELV). Regarding the REACH Regulation, the information TE provides on SVHC in articles for this part number is based on the latest European Chemicals Agency (ECHA) 'Guidance on requirements for substances in articles' posted at this URL: <https://echa.europa.eu/guidance-documents/guidance-on-reach>

Compatible Parts



TE Part # 1-1469492-9
MULTIGIG RT 9MM GUIDE/ESD UNKE



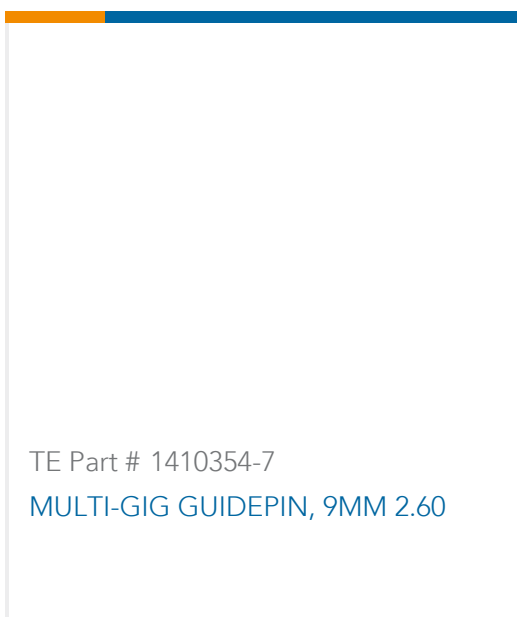
TE Part # 1-1410773-2
MULTIGIG RT BP GUIDE PIN 2.5 NI



TE Part # 1-1410773-3
MULTIGIG RT BP GUIDE PIN 4.2 NI



TE Part # 1-1410773-4
MULTIGIG RT BP GUIDE PIN 5.7 NI



Customers Also Bought



Documents

Product Drawings

MULTIGIG RT GUIDEPIN, 9MM 2.60

English

CAD Files

3D PDF

3D

Customer View Model

ENG_CVM_CVM_1-1469491-2_B.3d_igs.zip



English

Customer View Model

[ENG_CVM_CVM_1-1469491-2_B.3d_stp.zip](#)

English

Customer View Model

[ENG_CVM_CVM_1-1469491-2_B.2d_dxf.zip](#)

English

By downloading the CAD file I accept and agree to the [Terms and Conditions](#) of use.

Datasheets & Catalog Pages

[High Speed Backplane Connectors catalog - MULTIGIG RT Connector](#)

English

[POWER_CONNECTORS_CATALOG_SEC01_BOARD_TO_BOARD](#)

English

[2_PIECE_POWER_CONNECTORS_qrg_4-1773458-1](#)

English

[MULTIGIG RT Connector Products for VITA 46 \(VPX\) Standard](#)

English

Product Specifications

[Application Specification](#)

English

Product Environmental Compliance

[MD_1-1469491-2_06192018135_dmtec](#)

English

[MD_1-1469491-2_06192018135_dmtec](#)

English