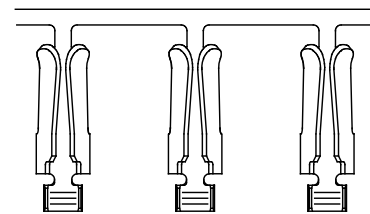
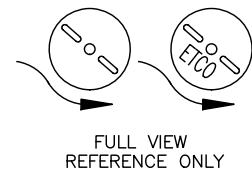
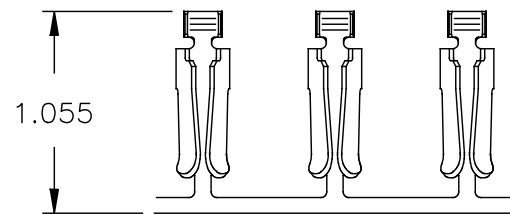
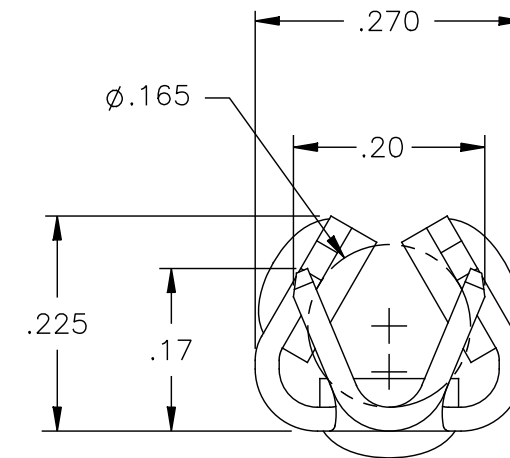
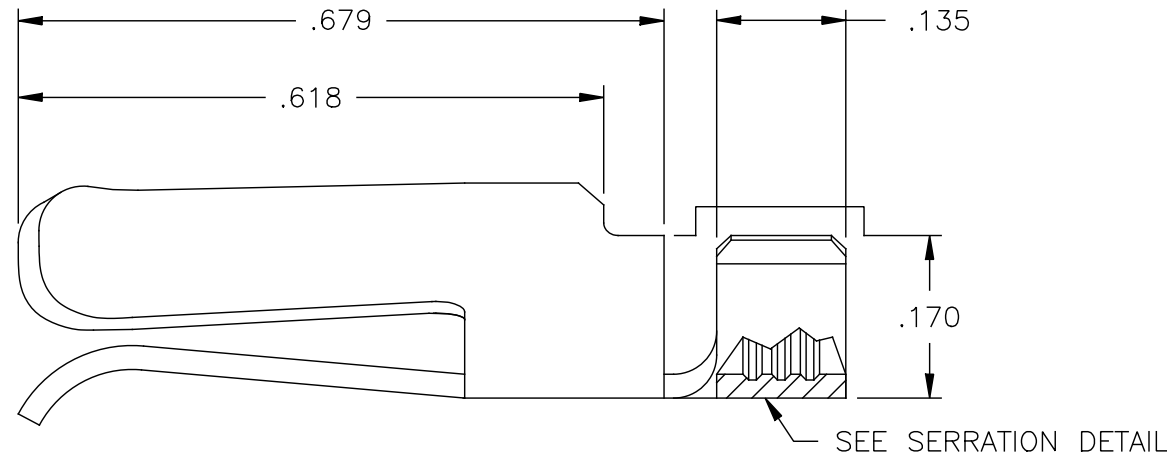
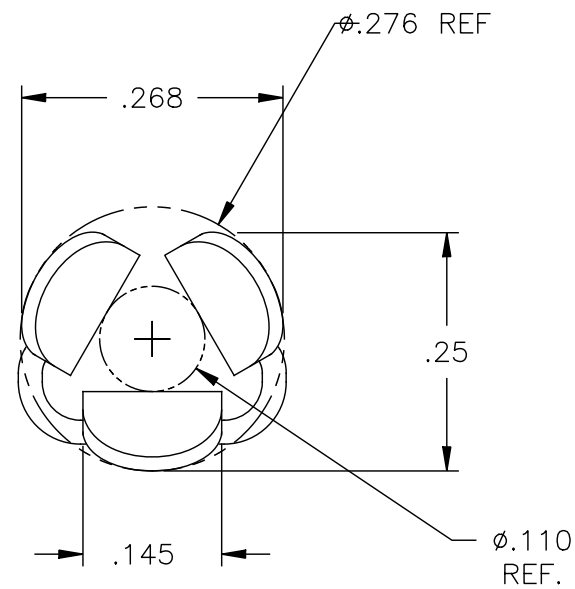
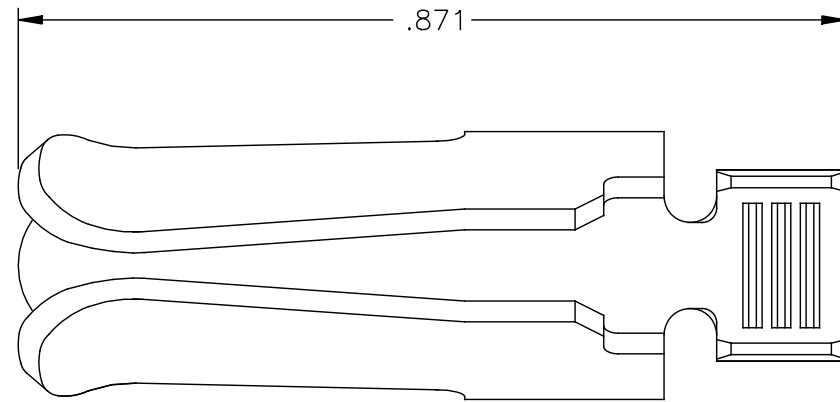


- NOTE:
- 1.) MAT'L: .025 THK, PRE-COPPER COATED COLD ROLLED STEEL, #2 TEMPER (HALF HARD), PER ETCO METAL CODE NO. 02810
 - 2.) MAT'L: .025 THK, PHOSPHOR BRONZE, #4 TEMPER (FULL HARD), PER ETCO METAL CODE NO. 03630.
 - 3.) MATING PIN: ϕ .156
 - 4.) WIRE RANGE: 14-18 AWG

P/C	DESCRIPTION	MAT'L
09578	HCRJ-2F-PB	NOTE 2
09586	HCRJ-2F-CPS-KOMAR	NOTE 1
09587	HCRJ-2F-CPS	NOTE 1

Rev.	Description of Change/ SCN#	Date
1	COMPLETED P/C LIST SCJ	7-26-08



DIRECTION EXITING TOOL,
EARS UP, TO THE BACK

DIRECTION TOWARD APPLICATOR,
EARS UP, TO THE FRONT

UNCONTROLLED COPY

THIRD ANGLE PROJECTION

TOOL NO.
0666

Title: HEATER CORD CONNECTOR
(RECEPTACLE)

TOLERANCES
UNLESS OTHERWISE
SPECIFIED
.XX - \pm .030
.XXX - \pm .015
Angles - \pm 5°



DO NOT SCALE DWG.

Drawn By: P. McCormick Date: 10-2-96

ETCO Incorporated
Engineered Products
25 Bellows Street
Warwick, R.I. 02888
Phone: (401)467-2400
FAX: (401)467-9230

Checked: Scale: 5:1 Size B

Dwg. No.: C-HCRJ-2F cust

THIS PRINT IS THE PROPERTY OF ETCO INCORPORATED. NO PART OF THIS DESIGN MAY BE USED IN ANY WAY WITHOUT WRITTEN CONSENT FROM ETCO INCORPORATED.

CUSTOMER DRAWING