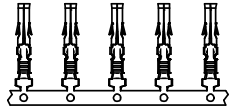
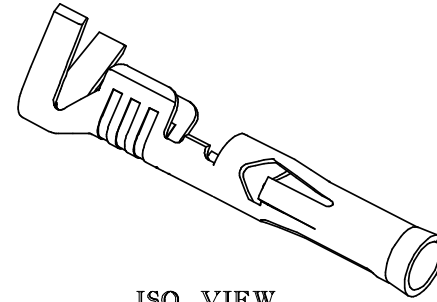
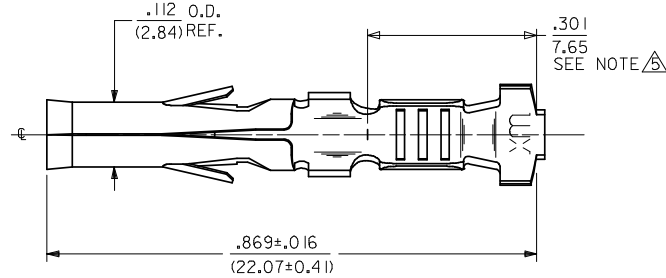


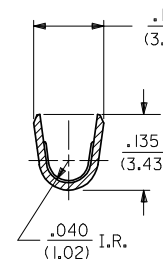
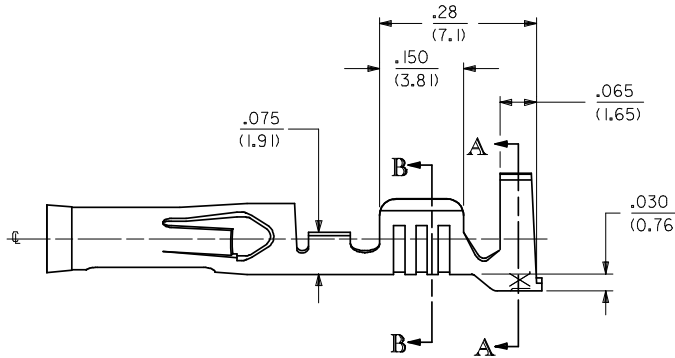
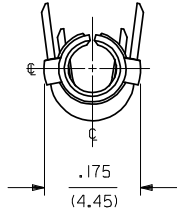
13	12	11
PART NO.	ENG. NO.	FORM
02-09-1615	42477-0005	CHAIN



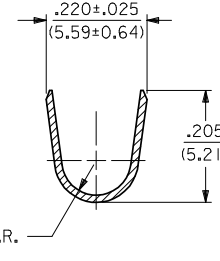
CHAIN FORM SHOWN  
FULL SCALE



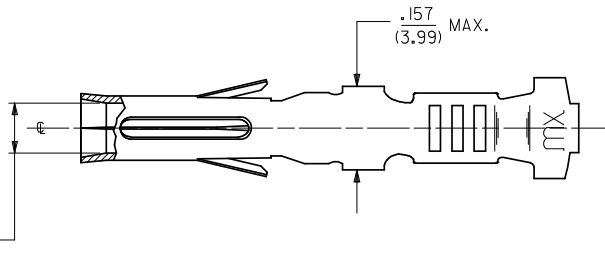
ISO VIEW



SECT. B-B



SECT. A-A



NOTES:

1. MATERIAL: 70/30 CARTRIDGE BRASS PER ES-124-D209.
2. FINISH: HOT TIN DIP, .000080/(0.00203) TO .000020/(0.00051) THICK.
3. PRODUCT SPECIFICATION PSX-42477 APPLIES.
4. THESE TERMINALS ARE FOR USE WITH .093/(2.36) SERIES HOUSINGS AND ACCEPT #14 THRU #18 AWG WIRE WITH A MAXIMUM INSULATION DIAMETER OF .140/(3.56).

A DIMENSION FROM THE END OF TERMINAL TO THE END OF THE BRUSH ON THE WIRE CRIMPED INTO THE TERMINAL.

REVISE NOTE 2 EC NO: UCP2009-0059 DRAWN: GAVERILL 2008/07/08 CHKD: JBELL 2008/07/10 APPR: FSM/TH 2008/07/10	DESCRIPTION REV	QUALITY SYMBOLS ▽=0 ▽=0	GENERAL TOLERANCES (UNLESS SPECIFIED)		DIMENSION STYLE IN/MM		SCALE 6:1	DESIGN UNITS INCH	THIRD ANGLE PROJECTION
			mm	INCH	DRAWN BY GMC	DATE 1989/06/21	TITLE TERMINAL, SOCKET .093/(2.36) DIA., CRIMP FOR 14-18 AWG		
4 PLACES ± --- ± ---		3 PLACES ± --- ± .010		CHECKED BY RHR	DATE 1989/06/21	MOLEX MOLEX INCORPORATED			
2 PLACES ± 0.25 ± .014		1 PLACE ± 0.35 ± ---		APPROVED BY GWF	DATE 1989/06/21				
ANGULAR ± 1/2°		DRAFT WHERE APPLICABLE MUST REMAIN WITHIN DIMENSIONS		DOCUMENT NO. SD-42477-****		SHEET NO. 1 OF 1			
SIZE C		THIS DRAWING CONTAINS INFORMATION THAT IS PROPRIETARY TO MOLEX INCORPORATED AND SHOULD NOT BE USED WITHOUT WRITTEN PERMISSION							

