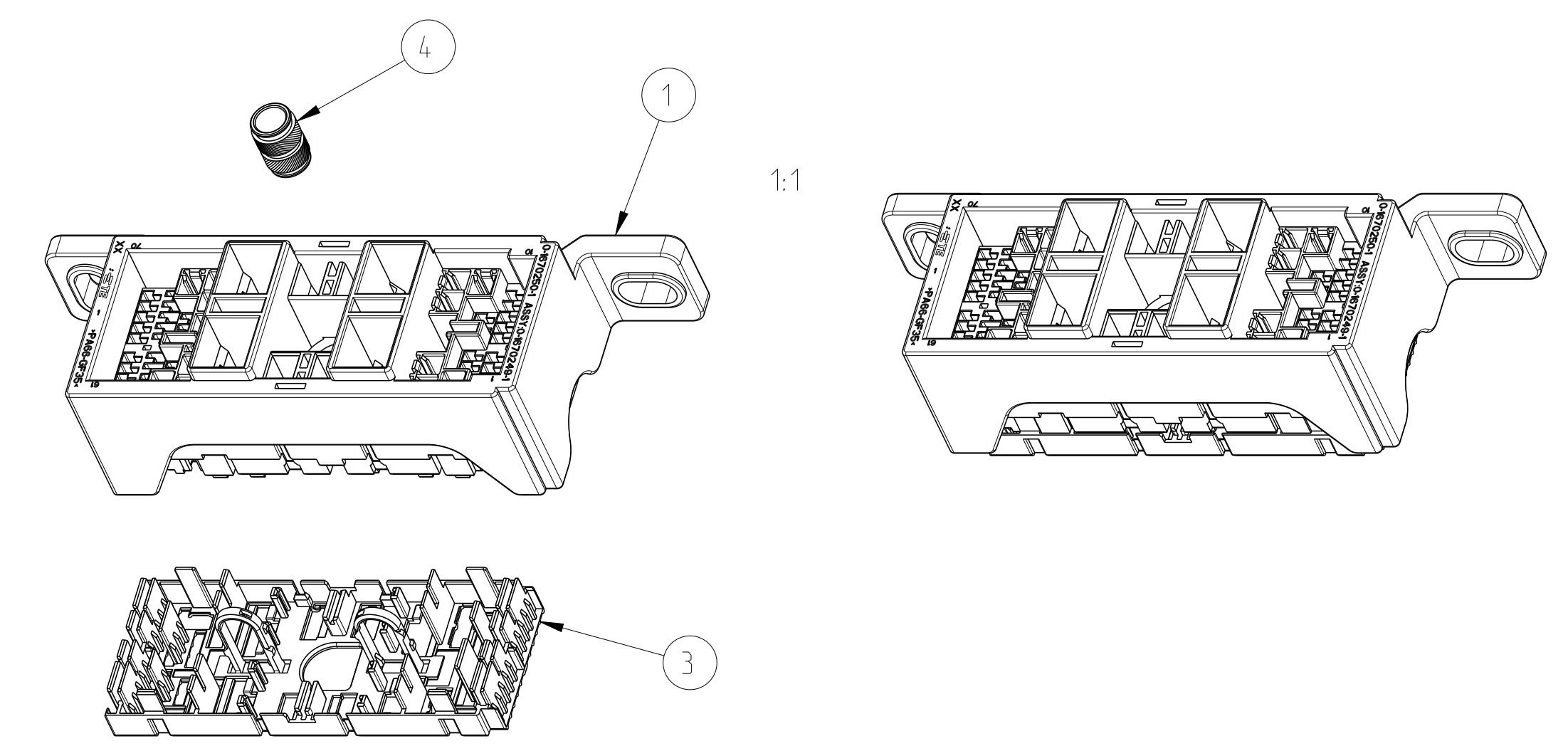
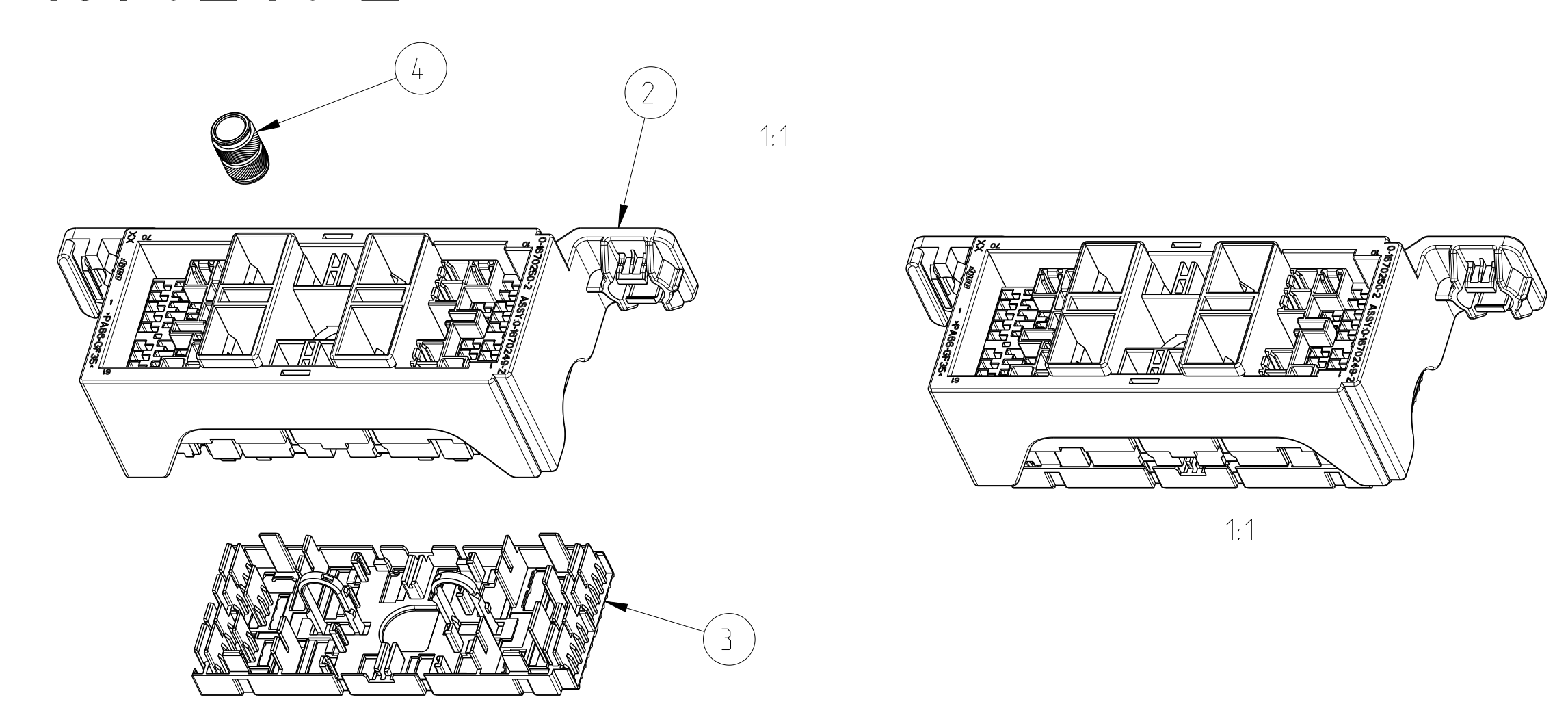


0-1670249-1 0-1670249-2

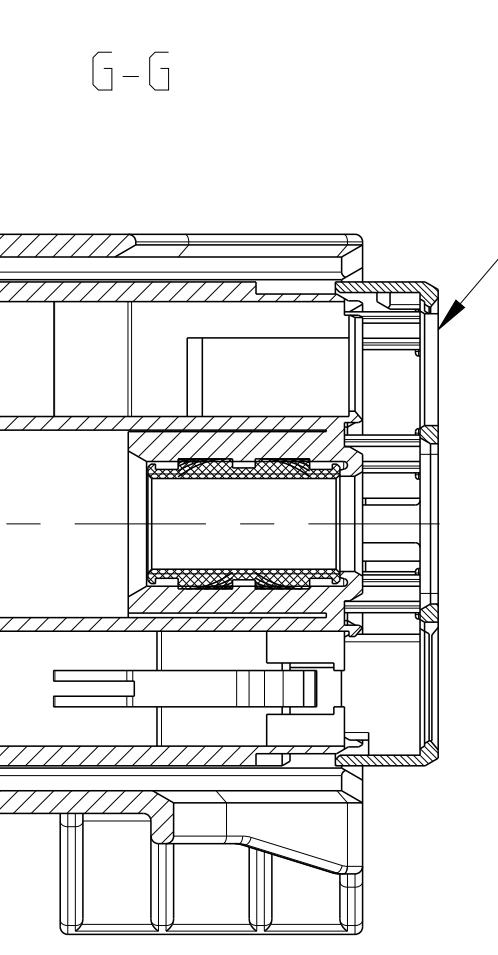
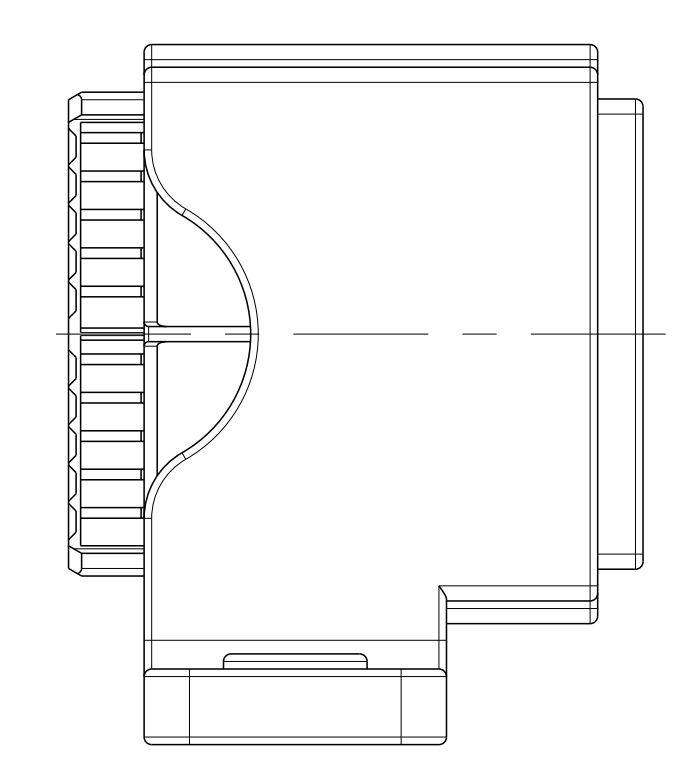
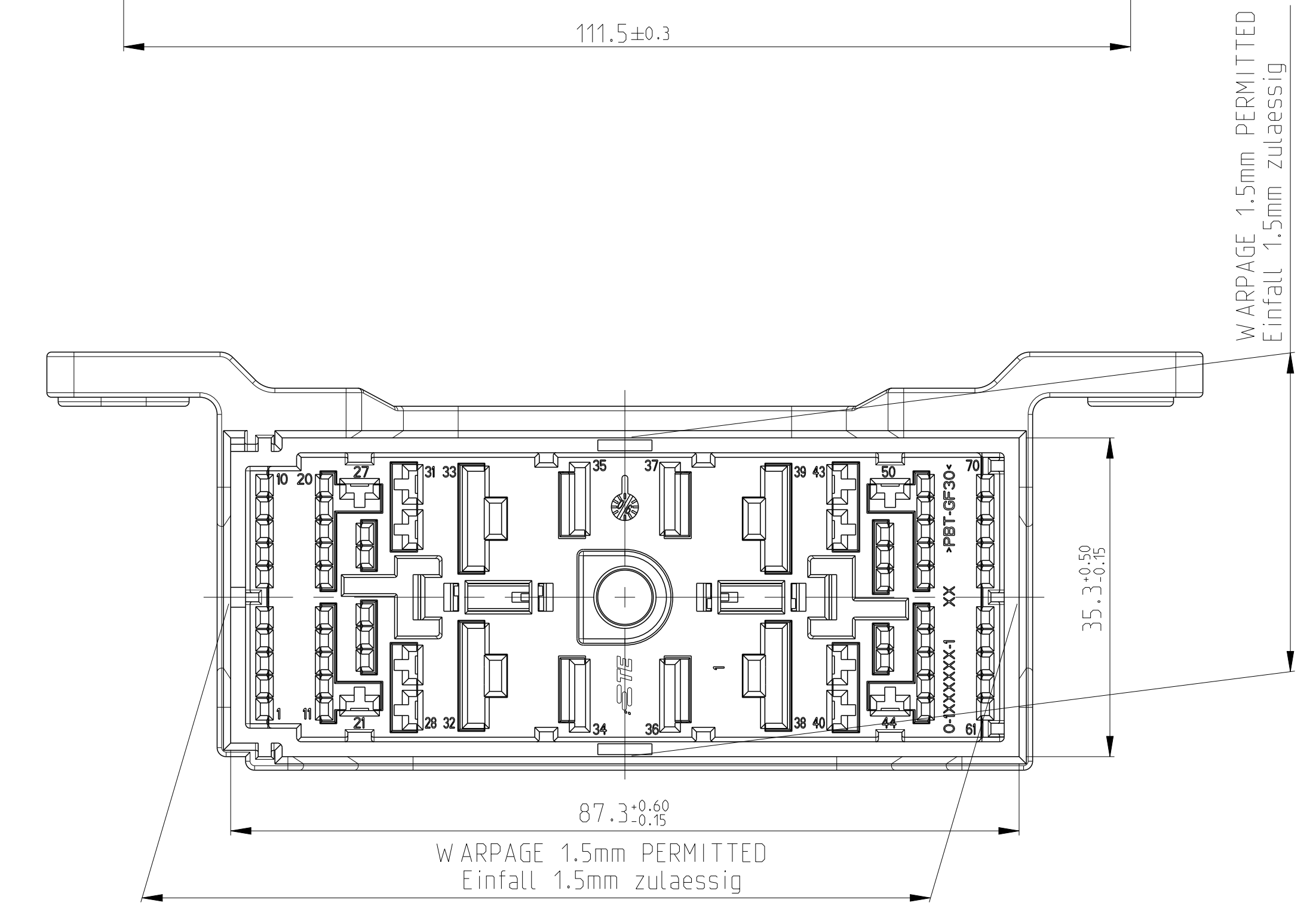
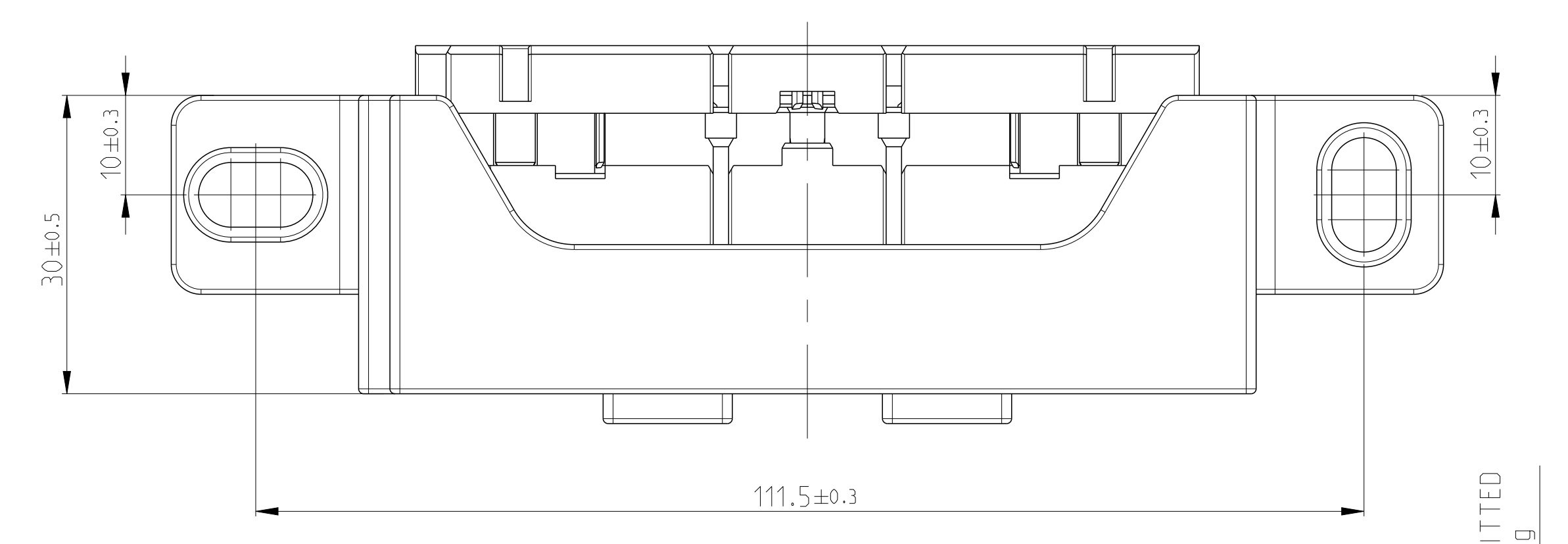
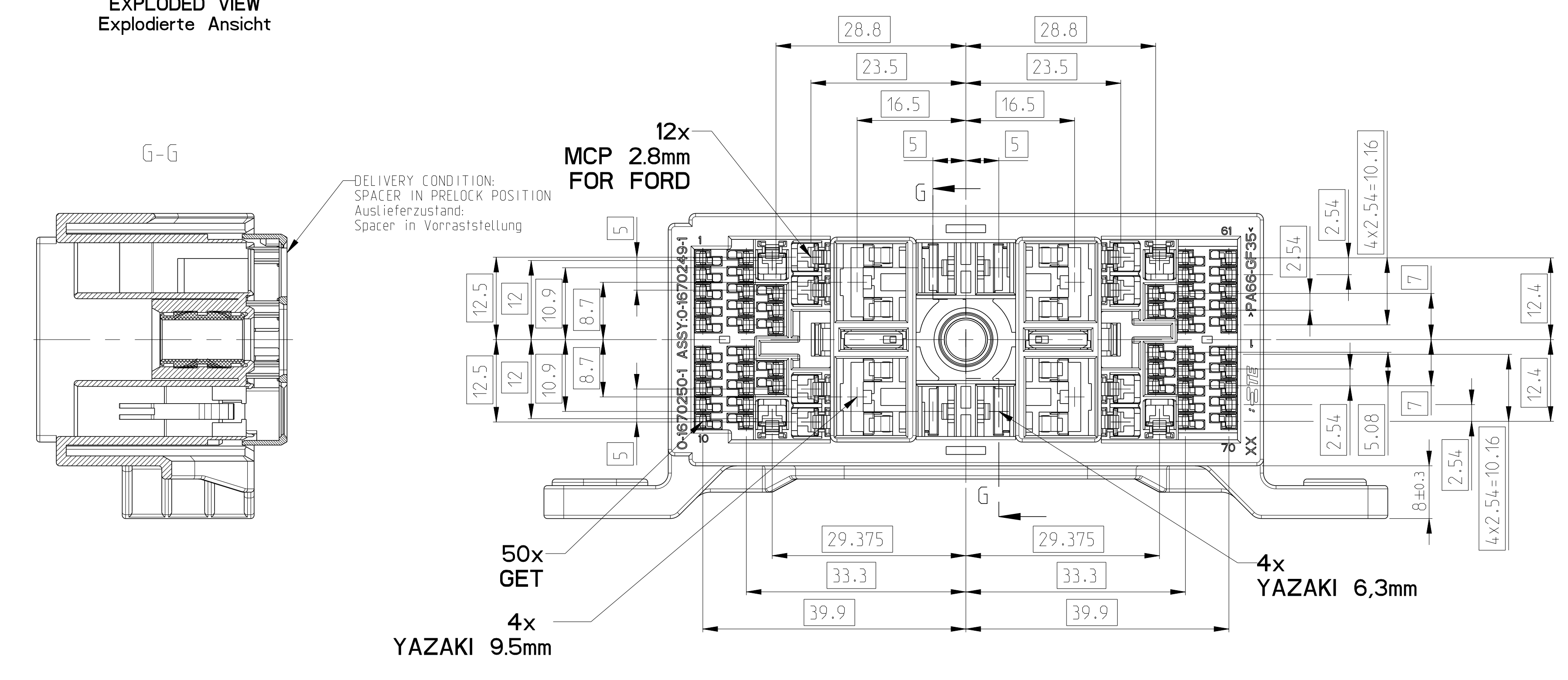
REVISIONS				
REV	DATE	BY	CHK	APPD
D	E-14-011576	01MJD2016	KIJ	KR



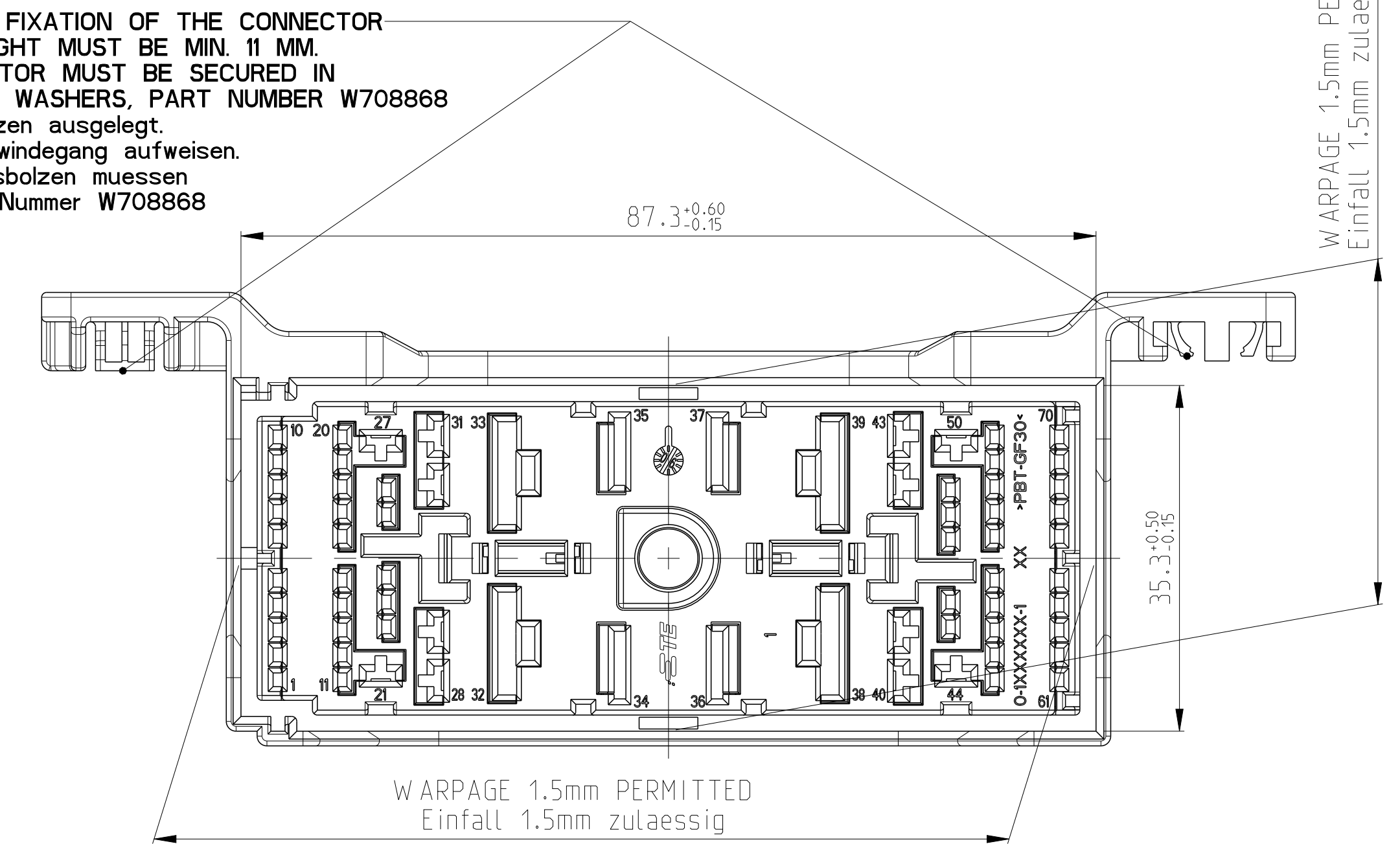
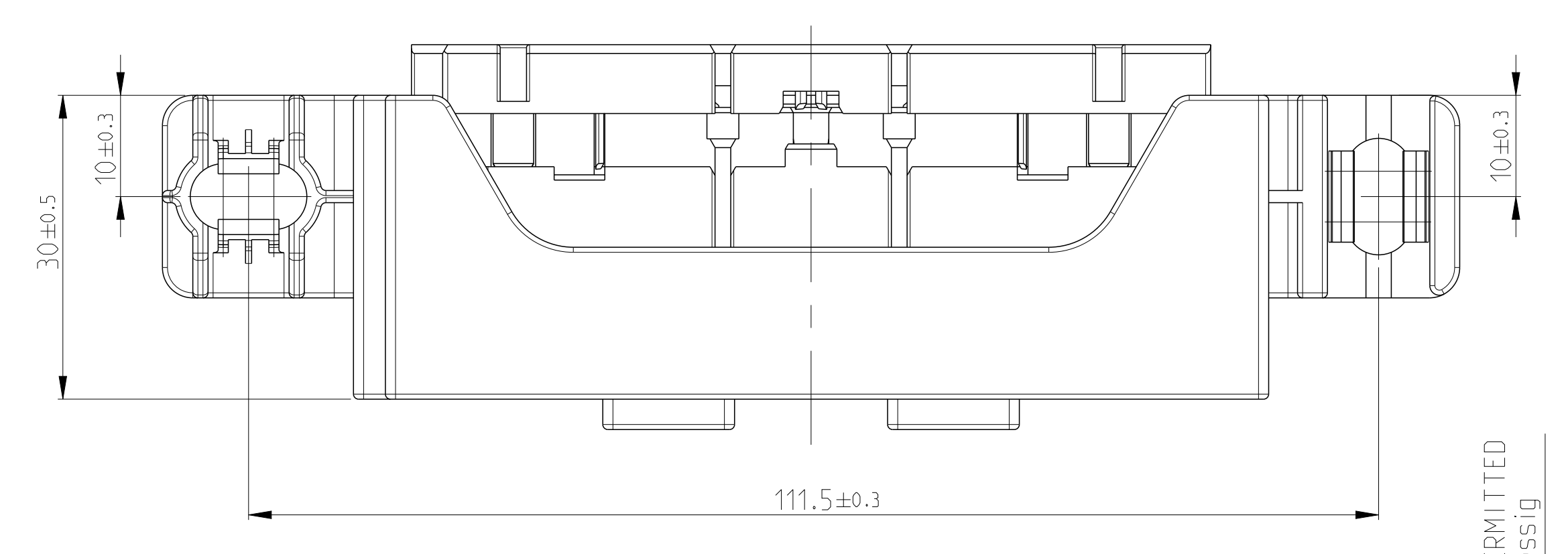
EXPLODED VIEW
Explodierte Ansicht



EXPLODED VIEW
Explodierte Ansicht



DELIVERY CONDITION: SPACER IN PRELOCK POSITION
Auslieferungszustand: Spacer in Vorraststellung



CLIPPING FEATURES ON THE CONNECTOR ARE DESIGNED FOR THE FIRST FIXATION OF THE CONNECTOR ON THE BODY STUDS. THE STUDS MUST BE M6 AND THE THREAD LENGTH MUST BE MIN. 11 MM. IN CASE OF SERVICE REMOVAL FROM THE BODY STUDS, THE CONNECTOR MUST BE SECURED IN ADDITION WITH WASHERS. RECOMMENDATION IS TO USE FORD RELEASED WASHERS, PART NUMBER W708868. Die Verstelelemente wurden nur fuer die Erststeckung auf den Schweissbolzen ausgelegt. Die Schweissbolzen muessen ein Gewinde von M6 und mindestens 11 mm Gewindegang aufweisen. Im Servicefall : Beim Wiederaufsetzen des Steckverbinders auf die Schweissbolzen muessen Sicherungsscheiben verwendet werden. Empfohlene Sicherungsscheiben: FORD-Nummer W708868

MATED WITH verwendet mit	0-1670252-1	0-1670252-1				
1x	1x	BRASS	S-SOILCLOK-40 P6	-	4	
1x	1x	PBT-GF30	TO POS. SPACER	RED	3	
1x	-	PA66-GF35	TO POS. MIXED RECEPTACLE HOUSING VERSION 2	BLACK	2	
-	1x	PA66-GF35	TO POS. MIXED RECEPTACLE HOUSING VERSION 1	BLACK	1	
0-1670249-2	0-1670249-1					
70.40	70.40					

THIS DRAWING IS A CONTROLLED DOCUMENT. DATE: 090C12005. DRAWN BY: G. RUCKEL. CHECKED BY: K. ROTH. APPROVED BY: G. RUCKEL. PRODUCT SPEC: 090C12005. APPLICATION SPEC: 114-18904. WEIGHT: -. CUSTOMER DRAWING.

STE TE Connectivity

70 POS. MIXED RECEPTACLE ASSEMBLY

SCALE: 2:1. SHEET: 1 OF 1. REV: D.

-1 AS SHOWN
wie gezeichnet

-2 AS SHOWN
wie gezeichnet