

2411-002-1805 ✓ ACTIVE

DEUTSCH | DEUTSCH HD, DEUTSCH HDP

TE Internal #: 2411-002-1805

Other Automotive Connector Accessories, Panel Nut, Wire-to-Wire,
PA GF, Black, 21 / 6 / 14 Position, Wire & Cable, DEUTSCH HDP

[View on TE.com >](#)



Connectors > Automotive Connectors > Connector Accessories > Other Connector Accessories > DEUTSCH HDP20 MOUNTING HARDWARE



Automotive Connector Accessory Type: **Panel Nut**

Connector System: **Wire-to-Wire**

Primary Product Material: **PA GF**

Primary Product Color: **Black**

Number of Positions: **6, 8, 14, 20, 21**

[All DEUTSCH HDP20 MOUNTING HARDWARE \(4\)](#)

Features

Product Type Features

Automotive Connector Accessory Type	Panel Nut
Connector System	Wire-to-Wire
Connector & Contact Terminates To	Wire & Cable

Configuration Features

Number of Positions	6, 8, 14, 20, 21
---------------------	------------------

Body Features

Primary Product Material	PA GF
Primary Product Color	Black

Usage Conditions

Compatible With Connector Style	Receptacle
Operating Temperature Range	-55 – 125 °C[-67 – 257 °F]

Industry Standards

UL Flammability Rating	Not tested
------------------------	------------



Packaging Features

Packaging Method	Box
------------------	-----

Other

Serviceable	Yes
-------------	-----

Product Compliance

[For compliance documentation, visit the product page on TE.com>](#)

EU RoHS Directive 2011/65/EU	Compliant
EU ELV Directive 2000/53/EC	Compliant
China RoHS 2 Directive MIIT Order No 32, 2016	No Restricted Materials Above Threshold
EU REACH Regulation (EC) No. 1907/2006	Current ECHA Candidate List: JAN 2022 (223) Candidate List Declared Against: JAN 2022 (223) Does not contain REACH SVHC
Halogen Content	Low Halogen - Br, Cl, F, I < 900 ppm per homogenous material. Also BFR/CFR/PVC Free
Solder Process Capability	Not reviewed for solder process capability

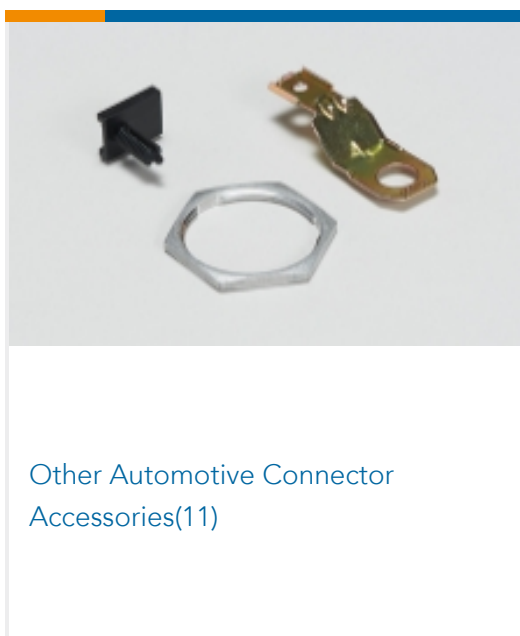
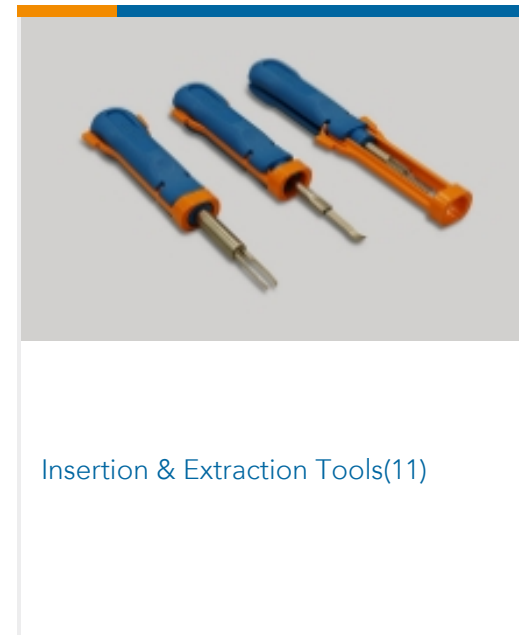
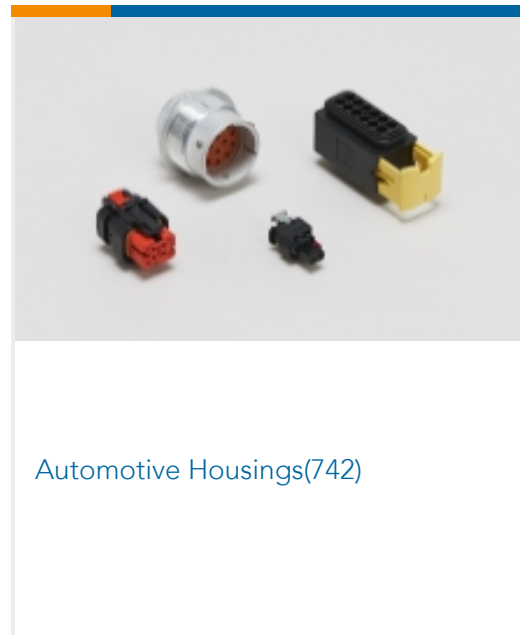
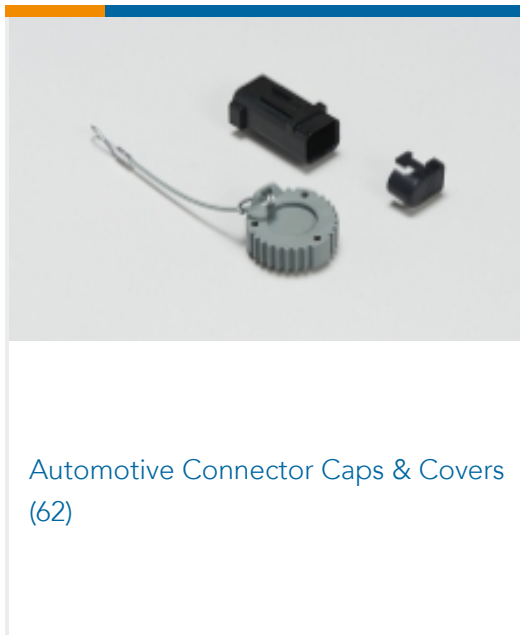
Product Compliance Disclaimer

This information is provided based on reasonable inquiry of our suppliers and represents our current actual knowledge based on the information they provided. This information is subject to change. The part numbers that TE has identified as EU RoHS compliant have a maximum concentration of 0.1% by weight in homogenous materials for lead, hexavalent chromium, mercury, PBB, PBDE, DBP, BBP, DEHP, DIBP, and 0.01% for cadmium, or qualify for an exemption to these limits as defined in the Annexes of Directive 2011/65/EU (RoHS2). Finished electrical and electronic equipment products will be CE marked as required by Directive 2011/65/EU. Components may not be CE marked. Additionally, the part numbers that TE has identified as EU ELV compliant have a maximum concentration of 0.1% by weight in homogenous materials for lead, hexavalent chromium, and mercury, and 0.01% for cadmium, or qualify for an exemption to these limits as defined in the Annexes of Directive 2000/53/EC (ELV). Regarding the REACH Regulation, the information TE provides on SVHC in articles for this part number is based on the latest European Chemicals Agency (ECHA) 'Guidance on requirements for substances in articles' posted at this URL: <https://echa.europa.eu/guidance-documents/guidance-on-reach>

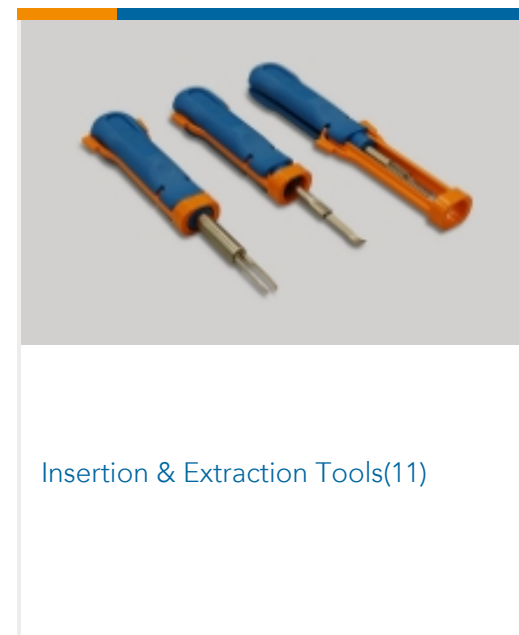
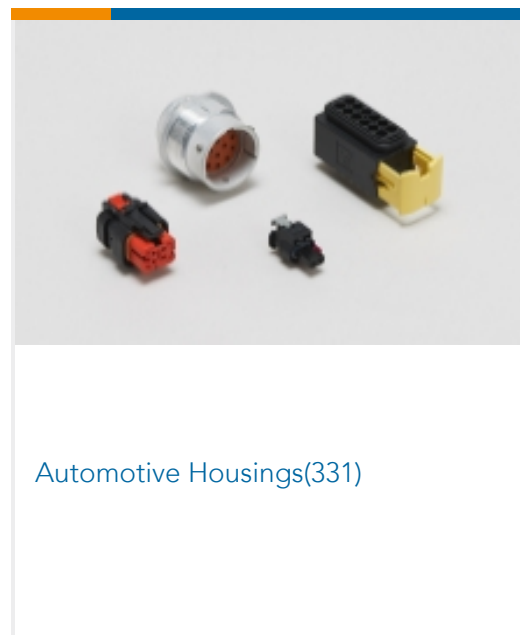
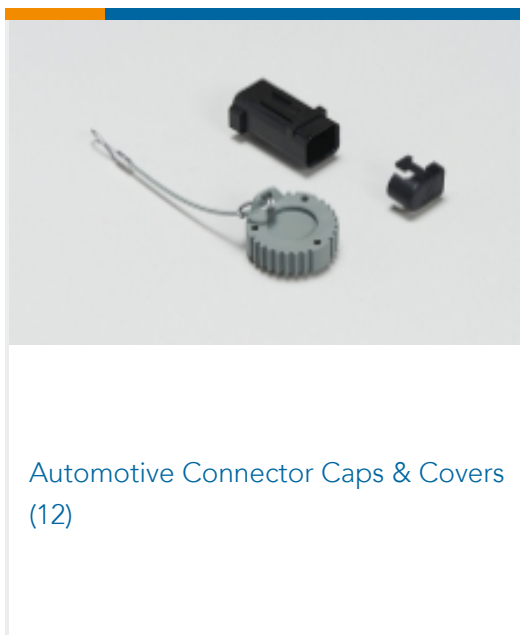
Compatible Parts



Also in the Series | DEUTSCH HD



Also in the Series | DEUTSCH HDP





Other Automotive Connector Accessories(5)

Customers Also Bought



TE Part #HD34-24-91PN-072
REC, 9P, AL, N, THD ADPT DRAIN,8/12 /16,P



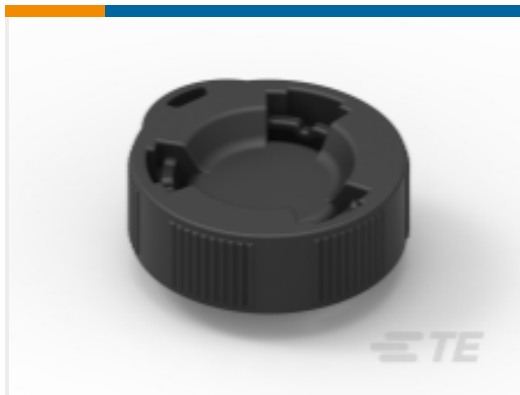
TE Part #HDP24-18-14PN
DEUTSCH HDP20 HOUSINGS



TE Part #HD10-9-1939P-B022
RECP ASM



TE Part #2428-016-1805
BKSHL, 18SZ, BLK, ST,NW13/17/19, L017,HDP



TE Part #HDC26-18
DUST CAP, 18SZ, REC, BLK, HDP



TE Part #2103247-6
SPLIT HEADER ASSY, KEY F, HVA280



TE Part #2266574-1
OCEAN_2.0_Applicator-S-062F



TE Part #7-2266574-7
OCEAN_2.0_SPARE_PART_KIT-062F



TE Part #16-04978
GASKET, 18SZ, BLK, HD30

Documents

Product Drawings

PANEL NUT, SIZE 18, HDP

English

CAD Files

3D PDF

3D

Customer View Model

ENG_CVM_CVM_2411-002-1805_99_c-2411-002-1805-99.2d_dxf.zip



English

Customer View Model

[ENG_CVM_CVM_2411-002-1805_99_c-2411-002-1805-99.3d_igs.zip](#)

English

Customer View Model

[ENG_CVM_CVM_2411-002-1805_99_c-2411-002-1805-99.3d_stp.zip](#)

English

By downloading the CAD file I accept and agree to the [Terms and Conditions](#) of use.

Datasheets & Catalog Pages

[CONNECTOR SELECTOR](#)

English

Product Specifications

[Application Specification](#)

English

Product Environmental Compliance

[Product Compliance](#)

English

[Product Compliance](#)

English