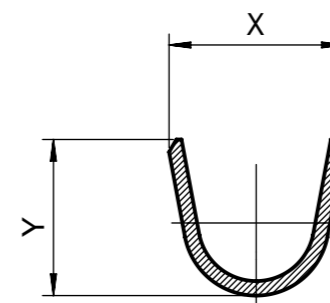


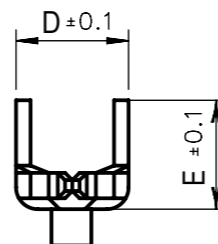
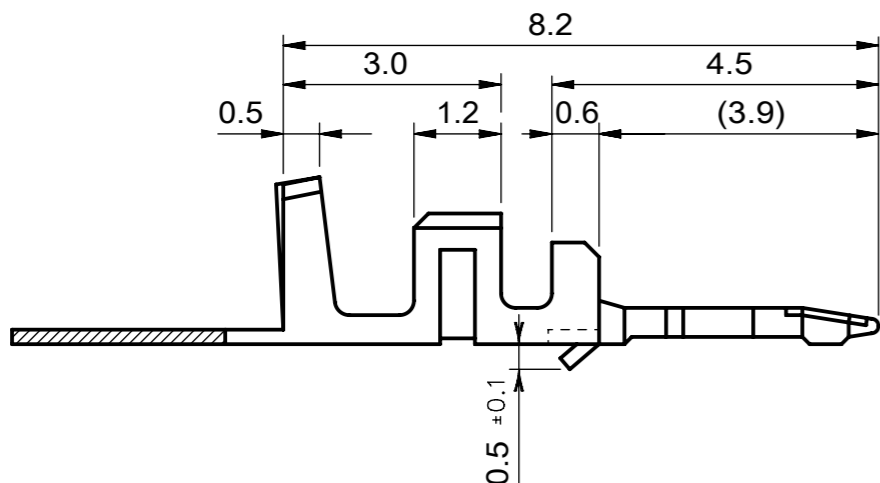
SECTION A-A'



SECTION B-B'

NOTE

1. MATERIAL : BRASS
2. FINISHES
 - 1) PRE-PLATING : 0.9 MICROMETER TIN(Sn) MINIMUM OVER
0.5 MICROMETER MINIMUM COPPER OVERALL
 - 2) POST-PLATING : 1~3 MICROMETER TIN(Sn) OVER
1 MICROMETER MINIMUM COPPER OVERALL
3. WIRE STRIP LENGTH : 2.0 ~ 2.5MM
4. TERMINAL INSERTION FORCE: 1.0kgf MAX.
5. TERMINAL RETENTION FORCE: 1.0kgf MIN.
6. USED WITH HOUSING : 35022, 35023, 35516
7. WIRE CRIMPING WIDTH : CONDUCTOR BARREL : 1.2mm
INSULATION BARREL : 1.3mm
- Ⓢ 8. APPLICABLE WIRE RANGE : AWG #22~#28 (SEE TABLE)
- Ⓢ 9. APPLICABLE INSULATION RANGE : \varnothing 1.5~1.9mm MAX. (SEE TABLE)
10. PCB HOLE SIZE(Ref.) : 2.0 PITCH - \varnothing 0.8 \pm 0.05
2.5 PITCH - \varnothing 1.0 \pm 0.05
DETAIL SIZE REFERS 35022 & 35023 DRAWINGS.



DESCRIPTION	Ⓢ WIRE RANGE	Ⓢ ENG. NO.	DIMENSION							PLATING	PACKING
			A	B	C	D	E	X	Y		
2.5MM B-IN TYPE	AWG #22~28 (INS. DIA : \varnothing 1.9mm MAX.)	35044-9105	0.70	0.68	1.05	1.55	1.50	2.4	2.15	PRE-PLATING	Ⓢ VACUUM POLY PACKING
		35044-9104								PRE-PLATING	GENERAL PACKING
2.0MM B-IN TYPE	AWG #24~28 (INS. DIA : \varnothing 1.5mm MAX.)	35044-9102	0.65	0.65	0.85	1.40	1.40	2.4	2.15	PRE-PLATING	GENERAL PACKING
		35044-9260								POST-PLATING	GENERAL PACKING

PRE-RELEASE
 REFERENCE
 USE ONLY

SYMBOLS ▽ = 0 DIMENSION UNITS ▽ = 0 SCALE ▽ = 0 mm 10:1 ▽ = 0 GENERAL TOLERANCES (UNLESS SPECIFIED) ▽ = 0 ANGULAR TOL ± 1.0° ▽ = 0 4 PLACES ± ▽ = 0 3 PLACES ± ▽ = 0 2 PLACES ± 0.15 ▽ = 0 1 PLACE ± 0.2 ▽ = 0 0 PLACES ± ■ = 0 DRAFT WHERE APPLICABLE MUST REMAIN WITHIN DIMENSIONS ▽ = 0	THIS DRAWING CONTAINS INFORMATION THAT IS PROPRIETARY TO MOLEX ELECTRONIC TECHNOLOGIES, LLC AND SHOULD NOT BE USED WITHOUT WRITTEN PERMISSION		CURRENT REV DESC: EC NO: 617086 DRWN: SCHONG03 2019/05/09 CHK'D: JBJIN 2019/05/16 APPR: YSKIM02 2019/05/16			
	INITIAL REVISION: DRWN: KSKIM 2003/06/09 APPR: CHANGWOOLEE 2003/06/10		2.0/2.5 B-IN TERL			
	PRODUCT CUSTOMER DRAWING		DOCUMENT NUMBER: SD-35044-001 DOC TYPE: PSD DOC PART: 001 REVISION: F2			
	THIRD ANGLE PROJECTION		DRAWING: A3-SIZE SERIES: 35044 MATERIAL NUMBER: SEE TABLE CUSTOMER: GENERAL MARKET SHEET NUMBER: 1 OF 1			