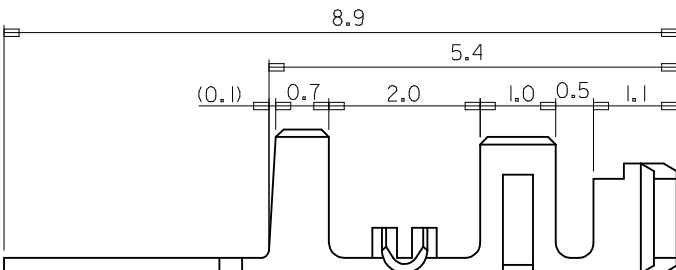


- NOTES :
- ①. MATERIAL: SEE TABLE
 - ②. FINISHES:
TIN(Sn) THICKNESS = 3.0µm MINIMUM
NICKEL(Ni) UNDERPLATE THICKNESS= 1~3µm
 - 3. PRODUCT SPECIFICATION: PS-35021-001
 - 4. PACKAGING SPECIFICATION: PK-35021-001
 - 3. MATES WITH(USED HOUSING): 35022-00**/35023-00**/68418-**00
 - 4. THIS PRODUCT IS LEAD FREE OF 35021-**10
 - ③④ INDICATION ∇ FORMED IN MANUFACTURING IS TO IMPROVE THE DIMENSION AND FUNCTION OF THE PRODUCT. THAT SHOULD BE SEEN OR NOT PER LOT OF STRIP. PLEASE USE IT AS THE REFERENCE.



[TABLE]

POST-PLATED	PHOS. BRON.	AWG #24-#30 (INS. DIA: Ø 1.5 MAX.)	1.8	1.9	R0.4	0.85	35021I360	35021-1360
POST-PLATED	PHOS. BRON.	AWG #22-#28 (INS. DIA: Ø 1.9 MAX.)	2.5	2.5	R0.7	1.05	35021I160	35021-1160
PLATING	MATERIAL	WIRE RANGE	D	C	B	A	MAT'L NO.	ENG NO.

LEAD FREE

REVISED
EC NO: KOR2017-0052
DRWN: SCHONG03 2017/05/17
CHKD: SHCHU 2017/05/17
APPR: YSK1M02 2017/05/18

QUALITY SYMBOLS
▽=0
∇=0

GENERAL TOLERANCES (UNLESS SPECIFIED)

	mm	INCH
4 PLACES	± ---	± ---
3 PLACES	± ---	± ---
2 PLACES	± 0.30	± ---
1 PLACE	± 0.30	± ---
0 PLACE	± ---	± ---

ANGULAR ± 1 °
DRAFT WHERE APPLICABLE MUST REMAIN WITHIN DIMENSIONS

DIMENSION STYLE
MM ONLY

DRAWN BY: HSSHIN
DATE: 2004/09/30

CHECKED BY: JKOH
DATE: 2004/09/30

APPROVED BY: CWLEE
DATE: 2004/09/30

MATERIAL NO. SEE TABLE

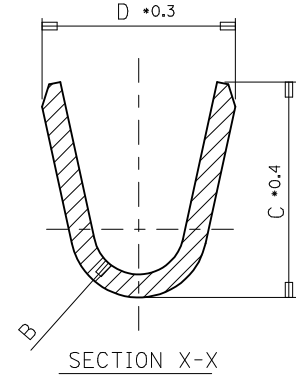
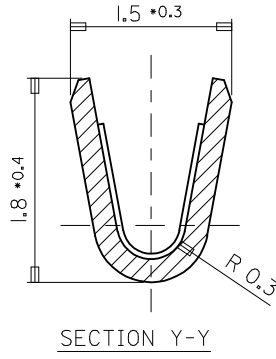
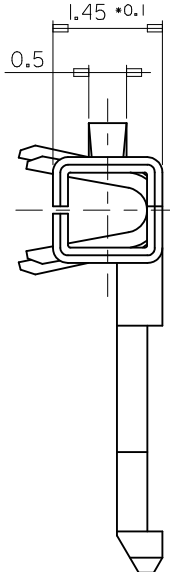
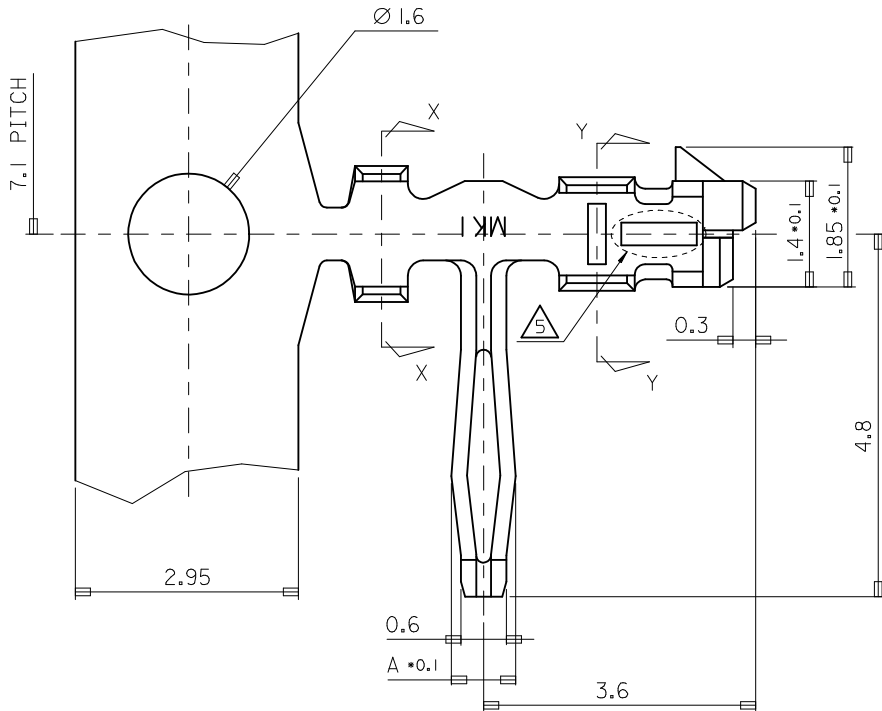
SCALE 15:1
DESIGN UNITS METRIC
THIRD ANGLE PROJECTION

TITLE R/A B-IN TERMINAL -LEAD FREE-

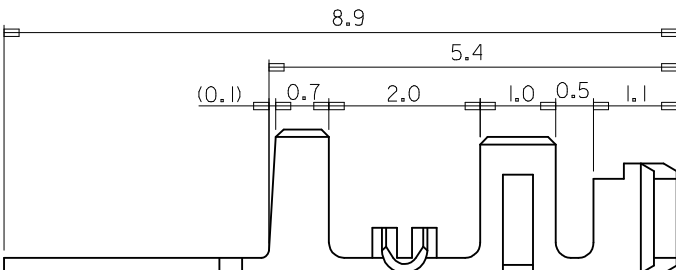
molex

DOCUMENT NO. SD-35021-002
SHEET NO. 1 OF 1

THIS DRAWING CONTAINS INFORMATION THAT IS PROPRIETARY TO MOLEX INCORPORATED AND SHOULD NOT BE USED WITHOUT WRITTEN PERMISSION



- NOTES :
- ①. MATERIAL: SEE TABLE
 - ②. FINISHES:
 TIN(Sn) THICKNESS = 3.0µm MINIMUM
 NICKEL(Ni) UNDERPLATE THICKNESS= 1~3µm
 - 3. PRODUCT SPECIFICATION: PS-35021-001
 - 4. PACKAGING SPECIFICATION: PK-35021-001
 - 3. MATES WITH(USED HOUSING): 35022-00**/35023-00**/68418-**00
 - 4. THIS PRODUCT IS LEAD FREE OF 35021-**10
 - ③④ INDICATION ∇ FORMED IN MANUFACTURING IS TO IMPROVE THE DIMENSION AND FUNCTION OF THE PRODUCT. THAT SHOULD BE SEEN OR NOT PER LOT OF STRIP. PLEASE USE IT AS THE REFERENCE.



[TABLE]

POST-PLATED	PHOS. BRON.	AWG #24-#30 (INS. DIA: Ø 1.5 MAX.)	1.8	1.9	R0.4	0.85	35021I360	35021-1360
POST-PLATED	PHOS. BRON.	AWG #22-#28 (INS. DIA: Ø1.9 MAX.)	2.5	2.5	R0.7	1.05	35021I160	35021-1160
PLATING	MATERIAL	WIRE RANGE	D	C	B	A	MAT'L NO.	ENG NO.

LEAD FREE

REVISED EC NO: KOR2017-0052 DRWN: SCHONG03 2017/05/17 CHKD: SHCHU 2017/05/17 APPR: YSK1M02 2017/05/18	QUALITY SYMBOLS	GENERAL TOLERANCES (UNLESS SPECIFIED)	DIMENSION STYLE	SCALE	DESIGN UNITS	THIRD ANGLE PROJECTION	
	$\blacktriangledown=0$ $\nabla=0$	mm INCH	MM ONLY	15:1	METRIC		
	4 PLACES ± --- ± --- 3 PLACES ± --- ± --- 2 PLACES ± 0.30 ± --- 1 PLACE ± 0.30 ± --- 0 PLACE ± --- ± ---	DRAWN BY HSSHIN DATE 2004/09/30 CHECKED BY JKOH DATE 2004/09/30 APPROVED BY CWLEE DATE 2004/09/30	TITLE	R/A B-IN TERMINAL -LEAD FREE-			
	ANGULAR ± 1 ° DRAFT WHERE APPLICABLE MUST REMAIN WITHIN DIMENSIONS	MATERIAL NO. SEE TABLE SIZE A3 THIS DRAWING CONTAINS INFORMATION THAT IS PROPRIETARY TO MOLEX INCORPORATED AND SHOULD NOT BE USED WITHOUT WRITTEN PERMISSION	DOCUMENT NO. SD-35021-002 SHEET NO. 1 OF 1	molex			