

product: DELPHI PN 15426816
 material: CUNI3SI1MG
 surface: F.SN3
 material thickness: 0,25 mm
 cross section [mm²]: 0,35 | 0,5

strip length: 3,50 mm
 cable type: FLRY-B
 insulation ø [mm]: 1,20 - 1,60
 seal:

**Uncontrolled
 Copy**
 For Information only!

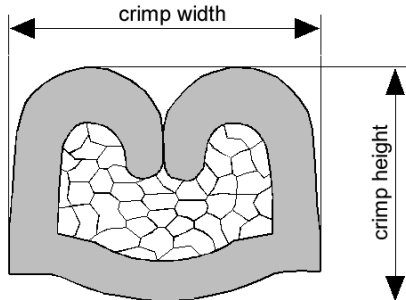
conductor dimension					crimp dimension [mm]					
cable type	cross sect. [mm ²]	struct. n x d [mm]	insul. diam. [mm]	tear-out force [N]	core		insulation			
					height ± 0,03	width ± 0,10	height ± 0,10	width ± 0,10	height ± tol.	width ± tol.
FLRY-B	0,35	12 x 0,21	1,30	50	0,95	1,45	1,60	1,80		
FLRY-B	0,5	16 x 0,21	1,50	80	1,05	1,45	1,70	1,90		

core:
 C-1.40-2.5-6-X
 DPN 10713739

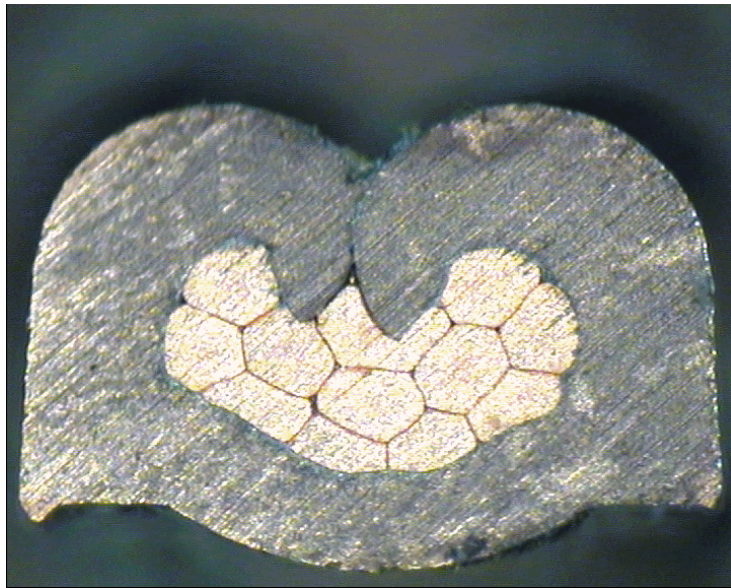
insulation:
 IS-1.80-2.5-6
 DPN 10713806

anvil:

two piece anvil:
 AC-1.40-2.75-A
 DPN 10803652
 AI-1.80-3.0-0.2
 DPN 10769981



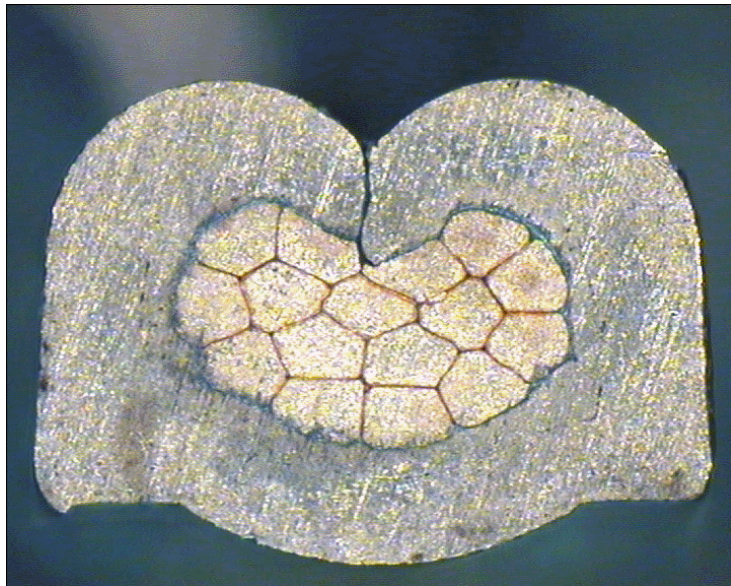
DELPHI PN 15426816



cable:
 $0,35 \text{ mm}^2 = 12 \times 0,21 \text{ mm}$

crimp height:
0,95 mm

crimp width:
1,45 mm



cable:
 $0,50 \text{ mm}^2 = 16 \times 0,21 \text{ mm}$

crimp height:
1,05 mm

crimp width:
1,45 mm