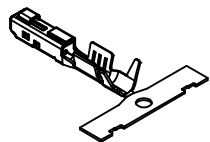
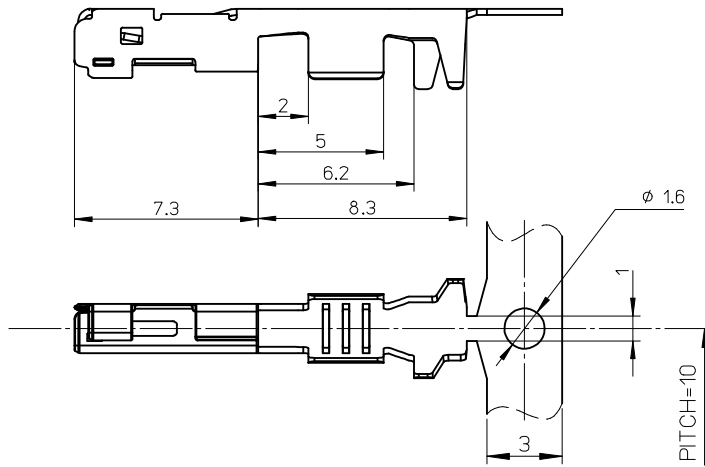


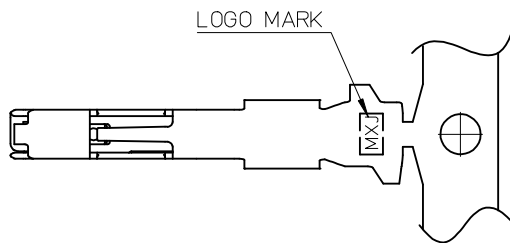
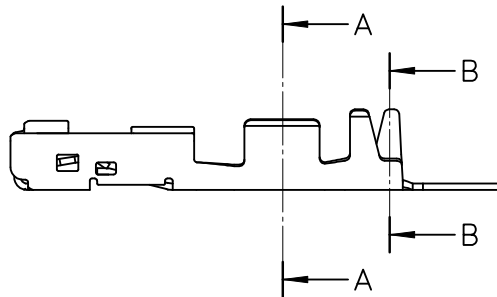
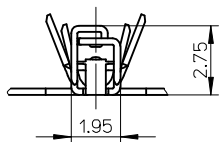
10 9 8 7 6 5 4 3 2 1



(2:1)

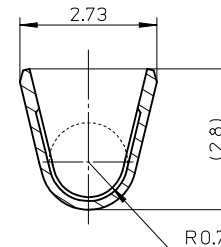


製品取り出し方向
DIRECTION OF PRODUCT TAKING OUT

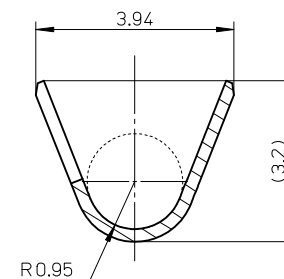


NOTES

1. 一般公差
GENERAL TOLERANCES (UNLESS SPECIFIED)
10 UNDER : ± 0.3
10 OVER 30 UNDER : ± 0.4
30 OVER : ± 0.5
ANGULAR : $\pm 5^\circ$
2. 材質 : 銅合金 $t=0.25$
MATERIAL : COPPER ALLOY $t=0.25$
3. 適応電線サイズ
0.75F (AESSX, AVSSH)
0.85~1.25sq (AVSS 相当)
APPLICABLE WIRE SIZE
0.75F (AESSX, AVSSH)
0.85~1.25sq (AVSS EQUIVALENT)
4. 適応メスハウジング
APPLICABLE RECEPTACLE HOUSING
FEMALE ASSY R 60P : 503136-60*1
FEMALE ASSY 44P : 503137-44*1
5. 圧着規格
弊社圧着規格に準拠すること。
圧着仕様書 : CS-503117-001
CRIMP STANDARD
IT IS BASED ON MOLEX CRIMP STANDARD.
CRIMP SPECIFICATION : CS-503117-001
6. ELV 及び RoHS 適合品
ELV & RoHS COMPLIANT



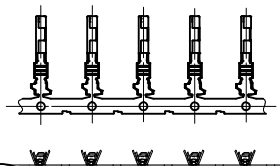
A-A(10:1)



B-B(10:1)

0.27g
NET WEIGHT

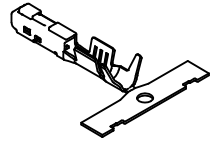
製品取り出し方向
DIRECTION OF PRODUCT TAKING OUT



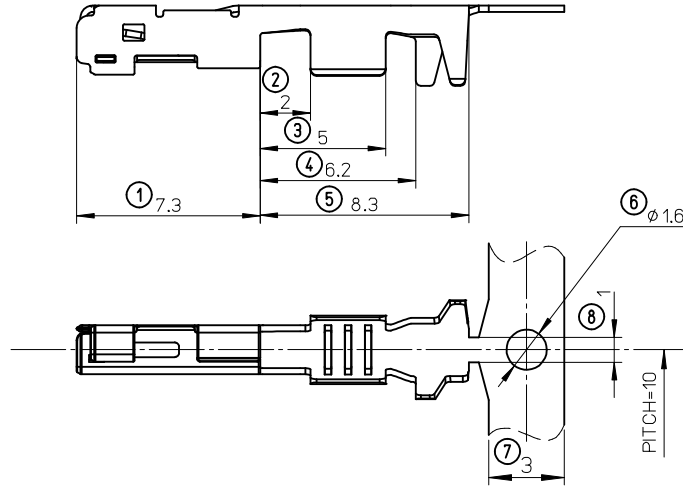
REVISED	DESCRIPTION
EC NO: JTR2014-0103	
DRWNG: INQUE02	2014/06/04
CHKD: TAITO	2014/06/04
APPR: MAYAMOTO	2014/06/05
REV	
A2	

DIMENSION STYLE MM ONLY		SCALE 5:1	DESIGN UNITS METRIC	THIRD ANGLE PROJECTION
DRAWN BY Y. HINO	DATE 2008/01/24	TITLE 040 FEMALE TERMINAL		
CHECKED BY T. HORI	DATE 2008/01/24			
APPROVED BY MA. YAMAMOTO	DATE 2008/01/24			
MATERIAL NO. 503117-0101	DOCUMENT NO. SD-503117-001	SHEET NO. 1 OF 1		
THIS DRAWING CONTAINS INFORMATION THAT IS PROPRIETARY TO MOLEX INCORPORATED AND SHOULD NOT BE USED WITHOUT WRITTEN PERMISSION				

9 8 7 6 5 4 3 2 1



(2:1)

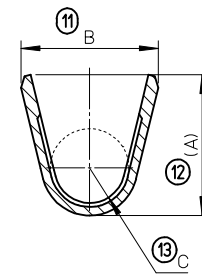
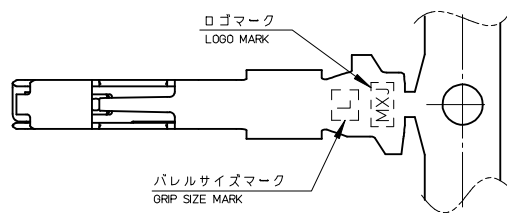
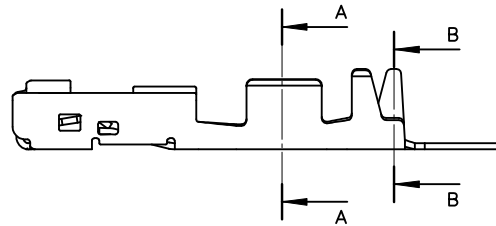
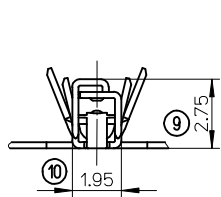


注記

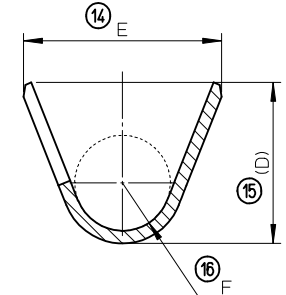
- 一般公差
 $<10: \pm 0.3$
 $10 \leq <30: \pm 0.4$
 $30 \leq : \pm 0.5$
 ANGULAR : $\pm 5^\circ$
- 材質 : 銅合金
- めっき仕様 : すずめっき
- 圧着規格
 弊社圧着仕様書に準拠すること。
 圧着仕様書 : AS-560205-001
- ELV及びRoHS適合品

NOTES

- GENERAL TOLERANCES
 $<10: \pm 0.3$
 $10 \leq <30: \pm 0.4$
 $30 \leq : \pm 0.5$
 ANGULAR : $\pm 5^\circ$
- MATERIAL : COPPER ALLOY
- PLATING : Tin PLATING
- CRIMP STANDARD
 IT IS BASED ON MOLEX CRIMP STANDARD.
 CRIMP SPECIFICATION : AS-560205-001
- ELV & RoHS COMPLIANT



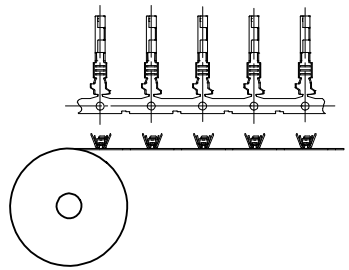
SECTION A-A
SCALE 10:1



SECTION B-B
SCALE 10:1

製品番号 PART NO.	パレル サイズ GRIP SIZE	適用電線サイズ APPLICABLE WIRE SIZE	寸法A Dim. A	寸法B Dim. B	寸法C Dim. C	寸法D Dim. D	寸法E Dim. E	寸法F Dim. F
560205-0102	S	AVSS, AVSSH, AESSX 0.5mm ²	(2.2)	2.4	R0.5	(2.45)	2.94	R0.7
560205-0101	L	AVSS 0.85 - 1.25mm ² AVSSH, AESSX 0.75f - 1.25fmm ² CIVUS 1.25mm ²	(2.8)	2.73	R0.7	(3.2)	3.94	R0.95

製品取り出し方向
DIRECTION OF PRODUCT TAKING OUT



RELEASED EC NO: JTR2016-0055 DRWN: YMO01 CHKD: T.IIDA01 APPR: MAYAMAMOTO	2015/12/04 2015/12/04 2015/12/07	DESCRIPTION REV
--	--	--------------------

QUALITY SYMBOLS	GENERAL TOLERANCES (UNLESS SPECIFIED)
▽=0	4 PLACES ±0.2 ±---
▽=0	3 PLACES ±0.25 ±---
▽=0	2 PLACES ±0.3 ±---
	1 PLACE ±0.1 ±---
	0 PLACE ±--- ±---
	ANGULAR ± 1°
	DRAFT WHERE APPLICABLE MUST REMAIN WITHIN DIMENSIONS

DIMENSION STYLE MM ONLY	SCALE 5:1	DESIGN UNITS METRIC	THIRD ANGLE PROJECTION
DRAWN BY T.IIDA01	DATE 2014/06/04	CHECKED BY T.IIDA01	DATE 2015/11/06
APPROVED BY MAYAMAMOTO	DATE 2015/11/09	MATERIAL NO.	DOCUMENT NO.
SIZE A3	THIS DRAWING CONTAINS INFORMATION THAT IS PROPRIETARY TO MOLEX INCORPORATED AND SHOULD NOT BE USED WITHOUT WRITTEN PERMISSION		

TITLE
CTX-J 100 RECEPTACLE
TERMINAL SEALED

molex

SD-560205-001

SHEET NO.
1 OF 1