



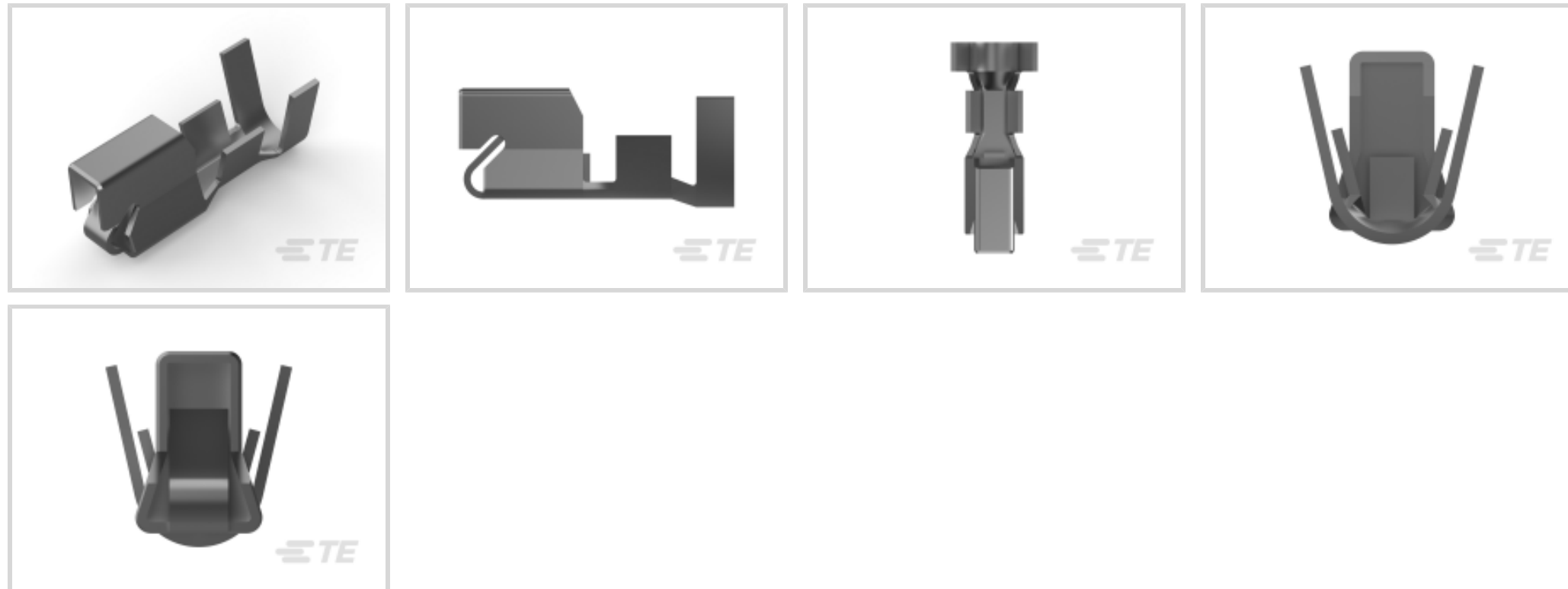
Economy Power

TE Internal #: 1744144-1

Power Contacts, Contact, 600 VAC, Pre-Tin, 22 – 18 AWG Wire Size, .33 – .82 mm<sup>2</sup> Wire Size, Wire-to-Board, Wire & Cable, Crimp, Power, Economy Power

[View on TE.com >](#)

Connectors > Power Connectors > Power Contacts



Power Contact Type: **Contact**

Operating Voltage: **600 VAC**

Contact Mating Area Plating Material: **Pre-Tin**

Wire Size: **.33 – .82 mm<sup>2</sup>**

**Features**

**Product Type Features**

Power Contact Type	Contact
Connector System	Wire-to-Board
Connector & Contact Terminates To	Wire & Cable

**Electrical Characteristics**

Operating Voltage	600 VAC
-------------------	---------

**Contact Features**

Contact Shape & Form	Single Beam in Box
Contact Mating Area Plating Material	Pre-Tin
Contact Current Rating (Max)	12.3 A
Contact Type	Socket
Contact Retention Within Housing	With
Mating Square Post Dimension	1.14 mm[.045 in]
Contact Base Material	Phosphor Bronze
Contact Mating Area Plating Material Thickness	.8 μm[31.49 μin]
Wire Contact Termination Area Plating Thickness	.8 μm[31.49 μin]



Wire Contact Termination Area Plating Material	Pre-Tin
--	---------

Wire Contact Termination Area Plating Material Finish	Semi-Bright
---	-------------

Contact Orientation	Straight
---------------------	----------

### Termination Features

Termination Method to Wire & Cable	Crimp
------------------------------------	-------

### Mechanical Attachment

Connector Mounting Type	Cable Mount (Free-Hanging)
-------------------------	----------------------------

Wire Insulation Support	Without
-------------------------	---------

### Dimensions

Wire Size	.33 – .82 mm <sup>2</sup>
-----------	---------------------------

Accepts Wire Insulation Diameter Range	1.7 – 2.9 mm [.067 – .114 in]
--	-------------------------------

Width	9.99 mm [.393 in]
-------	-------------------

Length	2.8 mm [.11 in]
--------	-----------------

Height	4 mm [.157 in]
--------	----------------

### Usage Conditions

Operating Temperature Range	-55 – 105 °C [-67 – 221 °F]
-----------------------------	-----------------------------

### Operation/Application

Circuit Application	Power
---------------------	-------

### Industry Standards

Glow Wire Rating	Standard Part - Not Glow Wire
------------------	-------------------------------

### Packaging Features

Packaging Method	Bag
------------------	-----

Packaging Quantity	4000
--------------------	------

### Other

Wire/Cable Type	Discrete Wire
-----------------	---------------

### Product Compliance

For compliance documentation, visit the product page on [TE.com](https://www.te.com)>

EU RoHS Directive 2011/65/EU	Compliant
------------------------------	-----------

EU ELV Directive 2000/53/EC	Compliant
-----------------------------	-----------

China RoHS 2 Directive MIIT Order No 32, 2016	No Restricted Materials Above Threshold
---	---



EU REACH Regulation (EC) No. 1907/2006

Current ECHA Candidate List: JAN 2022 (223)

Candidate List Declared Against: JAN 2022 (223)

Does not contain REACH SVHC

Halogen Content

Low Halogen - Br, Cl, F, I < 900 ppm per homogenous material. Also BFR/CFR/PVC Free

Solder Process Capability

Not applicable for solder process capability

Product Compliance Disclaimer

This information is provided based on reasonable inquiry of our suppliers and represents our current actual knowledge based on the information they provided. This information is subject to change. The part numbers that TE has identified as EU RoHS compliant have a maximum concentration of 0.1% by weight in homogenous materials for lead, hexavalent chromium, mercury, PBB, PBDE, DBP, BBP, DEHP, DIBP, and 0.01% for cadmium, or qualify for an exemption to these limits as defined in the Annexes of Directive 2011/65/EU (RoHS2). Finished electrical and electronic equipment products will be CE marked as required by Directive 2011/65/EU. Components may not be CE marked. Additionally, the part numbers that TE has identified as EU ELV compliant have a maximum concentration of 0.1% by weight in homogenous materials for lead, hexavalent chromium, and mercury, and 0.01% for cadmium, or qualify for an exemption to these limits as defined in the Annexes of Directive 2000/53/EC (ELV). Regarding the REACH Regulation, the information TE provides on SVHC in articles for this part number is based on the latest European Chemicals Agency (ECHA) 'Guidance on requirements for substances in articles' posted at this URL: <https://echa.europa.eu/guidance-documents/guidance-on-reach>

## Compatible Parts



TE Part # 2305570-1  
TERMINAL CUTTER, SIDE FEED



TE Part # 2151113-1  
OCEAN\_2.0\_APPLICATOR-S-070F102F



KIT  
REPRESENTATION ONLY

TE Part # 7-2151113-7  
OCEAN\_2.0\_SPARE\_PART\_KIT-070F102F



TE Part # 2217655-1  
CCII EPII LANCELESS STD 22-18 ASSY



TE Part # 2-2151113-1  
OCEAN\_2.0\_APPLICATOR-S-070F102F



TE Part # 2-2151113-2  
OCEAN\_2.0\_APPLICATOR-S-070F102F



TE Part # 2151113-2  
OCEAN\_2.0\_APPLICATOR-S-070F102F




TE Part # 2344117-3  
3 POS EP II HSG, GWT,omit 2




TE Part # 7-2151113-1  
OCEAN\_2.0\_APPLICATOR-S-070F102F




TE Part # 7-2151113-2  
OCEAN\_2.0\_APPLICATOR-S-070F102F




TE Part # 1366402-1  
SAHT ECONOMY POWER 22-18 ASSY

Also in the Series | Economy Power




Connector Contacts(1)



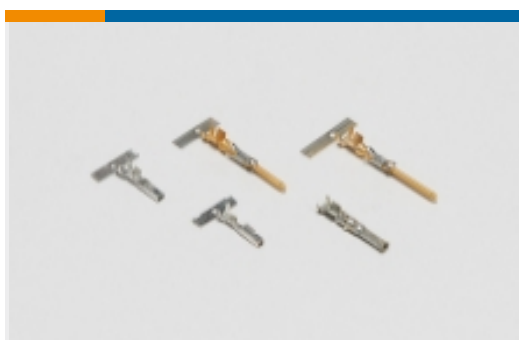
Insertion & Extraction Tools(1)




PCB Headers & Receptacles(166)



PCB Latches, Locks & Retainers(2)




Power Contacts(8)




Rectangular Connector Housings(1)



Rectangular Power Connectors(285)



Wire-to-Board Connector Assemblies & Housings(64)



Wire-to-Board Connector Contacts(6)

Customers Also Bought



TE Part #2132781-8  
08P EP-II HOUSING, NATURAL



TE Part #1744416-7  
7 POS EP II HSG, GLOW WIRE



TE Part #1744416-2  
2 POS EP II HSG, GLOW WIRE



TE Part #2132781-5  
05P EP-II HOUSING, NATURAL



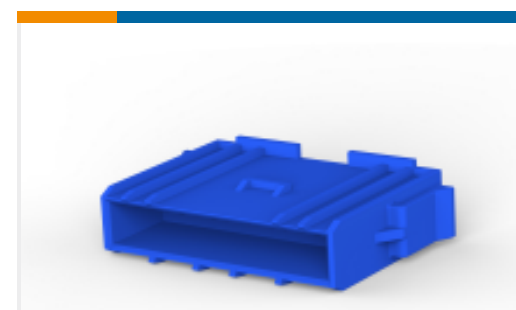
TE Part #2132781-7  
07P EP-II HOUSING, NATURAL



TE Part #1744416-3  
3 POS EP II HSG, GLOW WIRE



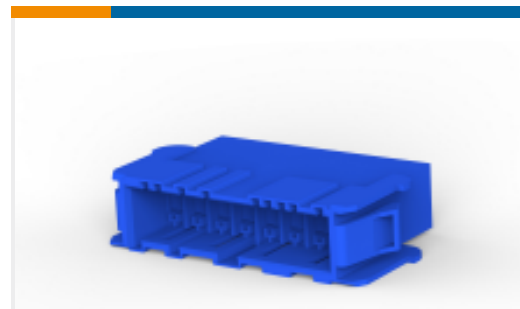
TE Part #1-1721547-1  
PCJ-109D3MH-WG,000M



TE Part #2120050-1  
FF HOUSING 6P NYLON BLUE



TE Part #4-1534798-5  
AMP DUOPLUG MK II CON. 3-20 PO



TE Part #6-1241967-8  
FF 8POS TAB HSG NYLON BLUE

## Documents

### Product Drawings

#### EP-II CONTACT LANCELESS, 22-18

English

### CAD Files

#### Customer View Model

[ENG\\_CVM\\_CVM\\_1744144-1\\_C.2d\\_dxf.zip](#)

English

#### 3D PDF

3D

#### Customer View Model

[ENG\\_CVM\\_CVM\\_1744144-1\\_C.3d\\_igs.zip](#)

English

#### Customer View Model

[ENG\\_CVM\\_CVM\\_1744144-1\\_C.3d\\_stp.zip](#)

English

By downloading the CAD file I accept and agree to the [Terms and Conditions](#) of use.

### Datasheets & Catalog Pages

#### 1-1773885-9 Economy Power Connectors

English

#### 7-1773458-5\_ECONOMY\_POWER\_QRG

English

#### 7-1773461-5\_EPII\_CONNECTOR\_TPA\_DEVICE

English

### Product Specifications



### Application Specification

English

---

### Product Environmental Compliance

[MD\\_1744144-1\\_03222018107\\_dmtec](#)

English

[MD\\_1744144-1\\_03222018107\\_dmtec](#)

English

---

### Instruction Sheets

[Instruction Sheet \(U.S.\)](#)

English

---

### Agency Approvals

[VDE Certificate](#)

English